

STATE OF ILLINOIS
DEPARTMENT OF TRANSPORTATION
DIVISION OF HIGHWAYS

PLANS FOR PROPOSED
FEDERAL AID HIGHWAY

FAU 1043 (ELLIS AVENUE)
FAU 3593 (LINCOLN AVE) TO FAU 1599 (142ND ST)
ROADWAY RESURFACING
SECTION NO.: 11-00115-00 RS
PROJECT NO.: M-9003(909)
VILLAGE of DOLTON
COOK COUNTY
JOB NO.: C-91-160-12

F. A. S. NO.	SECTION	COUNTY	TOTAL SHEETS	SHEET NO.
1043	11-00115-00-RS	COOK	11	1
STA.	TO STA.			
FED. ROAD DIST. NO.	ILLINOIS	FED. AID PROJECT	M-9003(909)	

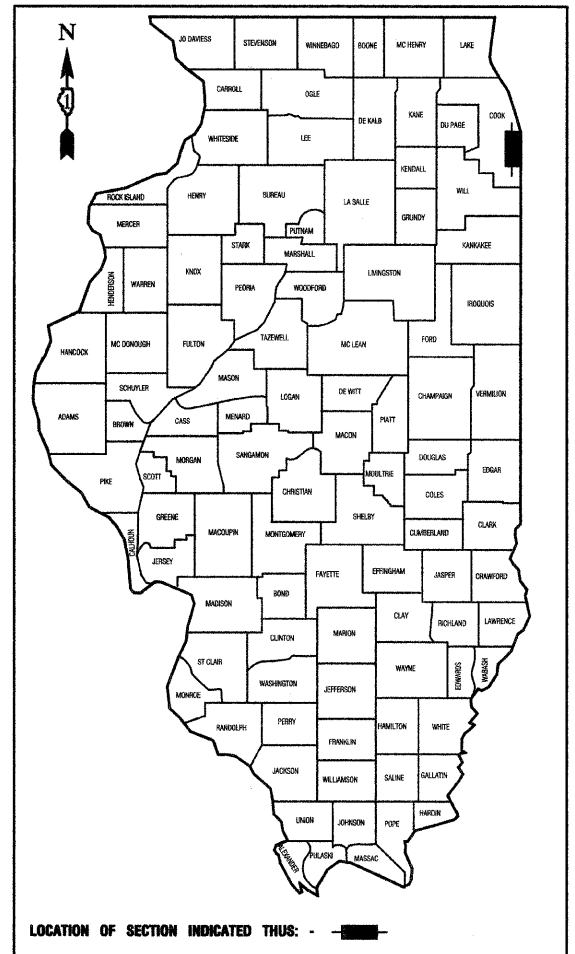
CONTRACT #63676

INDEX OF SHEETS

- COVER SHEET, INDEX OF SHEETS & STATE STANDARDS
- SUMMARY OF QUANTITIES & GENERAL NOTES
- TYPICAL CROSS SECTIONS
- PAVEMENT PLAN
- PAVEMENT MARKINGS
- 6.-11. IDOT DISTRICT 1 STANDARD DETAILS

HIGHWAY STANDARDS

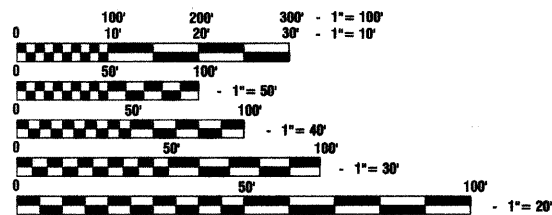
- | | |
|-----------|---|
| 000001-06 | STANDARD SYMBOLS, ABBREVIATIONS AND PATTERNS |
| 424001-06 | PERPENDICULAR CURB RAMPS FOR SIDEWALKS |
| 442201-03 | CLASS C AND D PATCHES |
| 602001-02 | CATCH BASIN, TYPE A |
| 606001-04 | CONCRETE CURB TYPE B AND COMBINATION CONCRETE CURB AND GUTTER |
| 701501-06 | URBAN LANE CLOSURE, 2L, 2W UNDIVIDED |
| 701801-05 | SIDEWALK, CORNER OR CROSSWALK CLOSURE |
| 701901-02 | TRAFFIC CONTROL DEVICES |



LOCATION OF SECTION INDICATED THUS: -

	ELLIS AVENUE
2010 ADT -	2,800
2040 ADT -	2,800
POSTED SPEED LIMIT -	25 mph
DESIGN PERIOD -	20 YEARS
DESIGN SPEED LIMIT -	30 mph
STREET CLASSIFICATION -	COLLECTOR

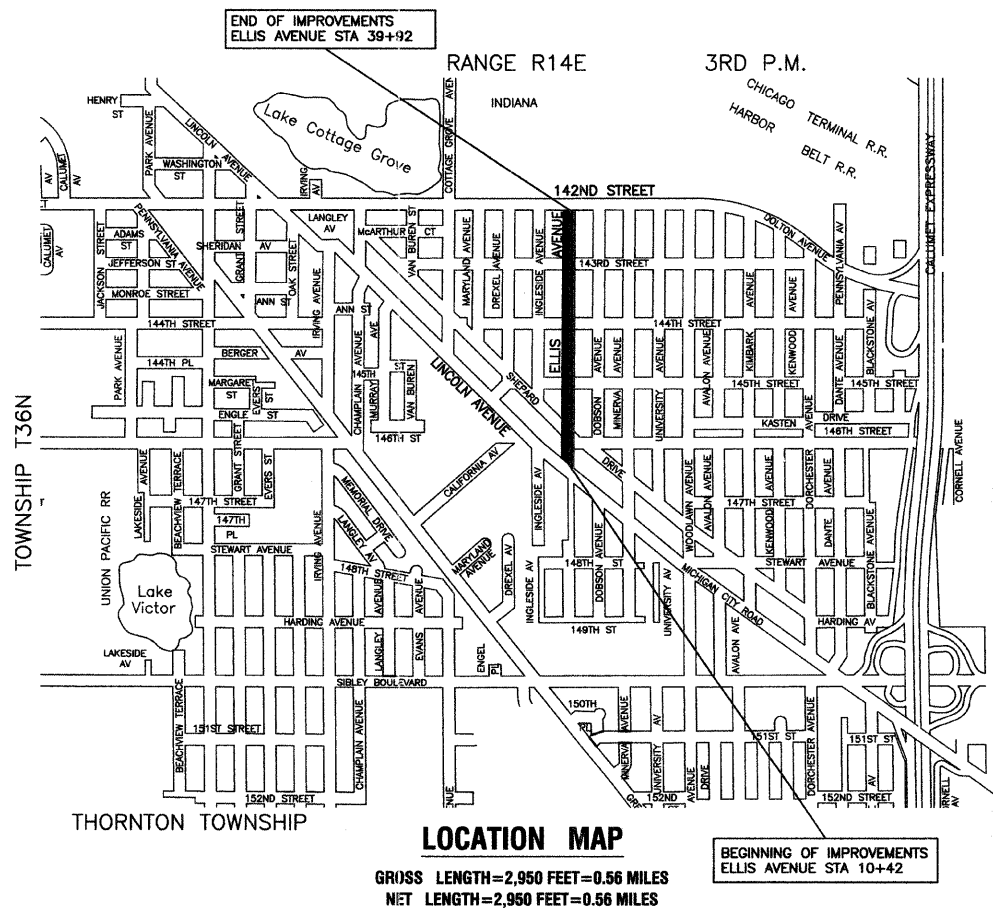
SCALES
PLAN - 1"=50'
PROFILE HORIZ. - 1"=50'
PROFILE VERT. - 1"=5'
CROSS SECTIONS - 1"=10'



FULL SIZE PLANS HAVE BEEN PREPARED USING STANDARD ENGINEERING SCALES, REDUCED SIZED PLANS WILL NOT CONFORM TO STANDARD SCALES, IN MAKING MEASUREMENTS ON REDUCED PLANS, THE ABOVE SCALES MAY BE USED.

J. U. L. I. E.
JOINT UTILITY LOCATION INFORMATION FOR EXCAVATION
1-800-892-0123 or 811

CONTRACT NO. 63676



LOCATION MAP

GROSS LENGTH=2,950 FEET=0.56 MILES
NET LENGTH=2,950 FEET=0.56 MILES

BEGINNING OF IMPROVEMENTS
ELLIS AVENUE STA 10+42

END OF IMPROVEMENTS
ELLIS AVENUE STA 39+92

STATE OF ILLINOIS DEPARTMENT OF TRANSPORTATION
DIVISION OF HIGHWAYS

Approved: 1-31-12
Kevin C. Lewis
President, Village of Dolton

Passed: FEBRUARY 14, 2012
Heidi C. Gault
District 1 Engineer of Local Roads & Streets

Released for Bid
Based on Limited
Review: FEBRUARY 14, 2012
Diane M. O'Keefe
Deputy Director of Highways, Region 1 Engineer

PRINTED BY THE AUTHORITY OF
THE STATE OF ILLINOIS

PREPARED BY OR UNDER THE
DIRECT SUPERVISION OF:

Heidi C. Gault
1-31-12



LICENSE EXPIRES: 11/30/13

PROGRAM AND OFFICE ENGINEER: CHARLES F. RIDDLE, PE (847)705-4406, SCHAUMBURG, IL
CONSULTANTS: ROBINSON ENGINEERING, LTD. 708-331-6700