

F. A. S. NO.	SECTION	COUNTY	TOTAL SHEETS	SHEET NO.
1071	11-00053-00-RS	COOK	9	1
STA.	TO STA.			
FED. ROAD DIST. NO. 1	LINKS	FED. AID PROJECT	M-9003(905)	

CONTRACT #63678

STATE OF ILLINOIS
DEPARTMENT OF TRANSPORTATION
DIVISION OF HIGHWAYS

PLANS FOR PROPOSED FEDERAL AID HIGHWAY

FAU 1071 (MINERVA AVENUE)
FAU 3603(GLENWOOD-DYER ROAD) TO
FAU 1627 (GLENWOOD-LANSING ROAD)
ROADWAY RESURFACING
SECTION NO.:11-00053-00-RS
PROJECT NO.:M-9003(905)
VILLAGE of GLENWOOD
COOK COUNTY
JOB NO. C-91-164-12

INDEX OF SHEETS

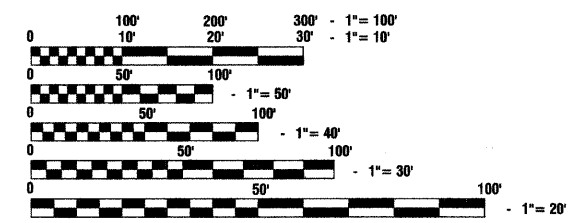
1. COVER SHEET, INDEX OF SHEETS & STATE STANDARDS
2. SUMMARY OF QUANTITIES & GENERAL NOTES
3. TYPICAL CROSS SECTIONS
4. PAVEMENT PLAN
5. PAVEMENT MARKINGS
- 6.-9. IDOT DISTRICT 1 STANDARD DETAILS

HIGHWAY STANDARDS

- | | |
|-----------|--|
| 000001-06 | STANDARD SYMBOLS, ABBREVIATIONS AND PATTERNS |
| 424001-06 | PERPENDICULAR CURB RAMPS FOR SIDEWALKS |
| 442201-03 | CLASS C AND D PATCHES |
| 606001-04 | CONCRETE CURB TYPE B AND COMBINATION CONCRETE CURB AND GUTTER |
| 701501-06 | URBAN LANE CLOSURE, 2L, 2W, UNDIVIDED |
| 701801-05 | LANE CLOSURE, MULTILANE 1W OR 2W CROSSWALK OR SIDEWALK CLOSURE |
| 701901-02 | TRAFFIC CONTROL DEVICES |
| 886001-01 | DETECTOR LOOP INSTALLATIONS |
| 886006-01 | TYPICAL LAYOUTS FOR DETECTION LOOPS |

	<u>MINERVA AVENUE</u>
2010 ADT -	2,700
2040 ADT -	2,700
POSTED SPEED LIMIT -	25 mph
DESIGN PERIOD -	20 YEARS
DESIGN SPEED LIMIT -	30 mph
DESIGN DESIGNATION -	URBAN, COLLECTOR

SCALES
 PLAN - 1"=50'
 PROFILE HORIZ. - 1"=50'
 PROFILE VERT. - 1"=5'
 CROSS SECTIONS - 1"=10'

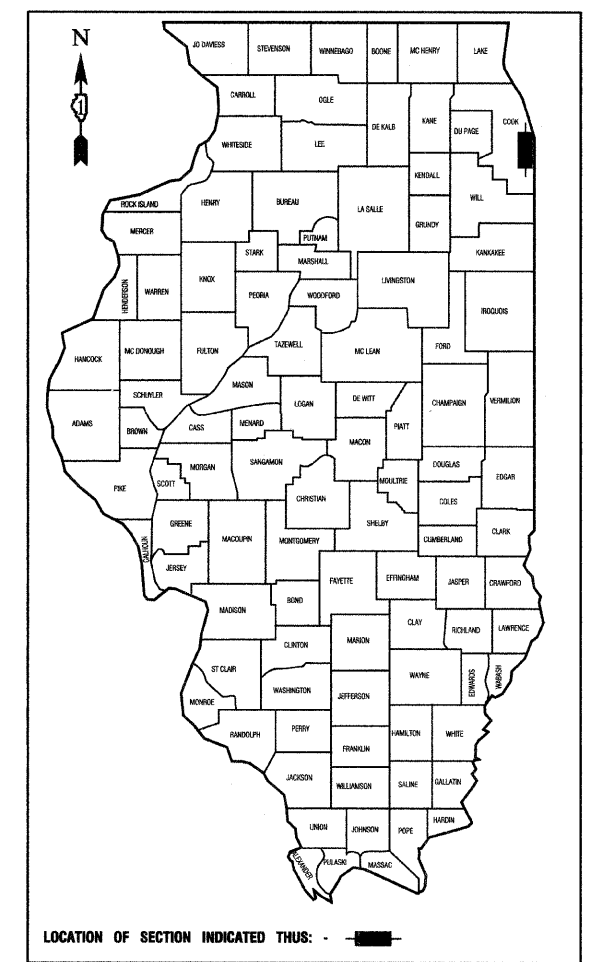


FULL SIZE PLANS HAVE BEEN PREPARED USING STANDARD ENGINEERING SCALES, REDUCED SIZED PLANS WILL NOT CONFORM TO STANDARD SCALES, IN MAKING MEASUREMENTS ON REDUCED PLANS, THE ABOVE SCALES MAY BE USED.

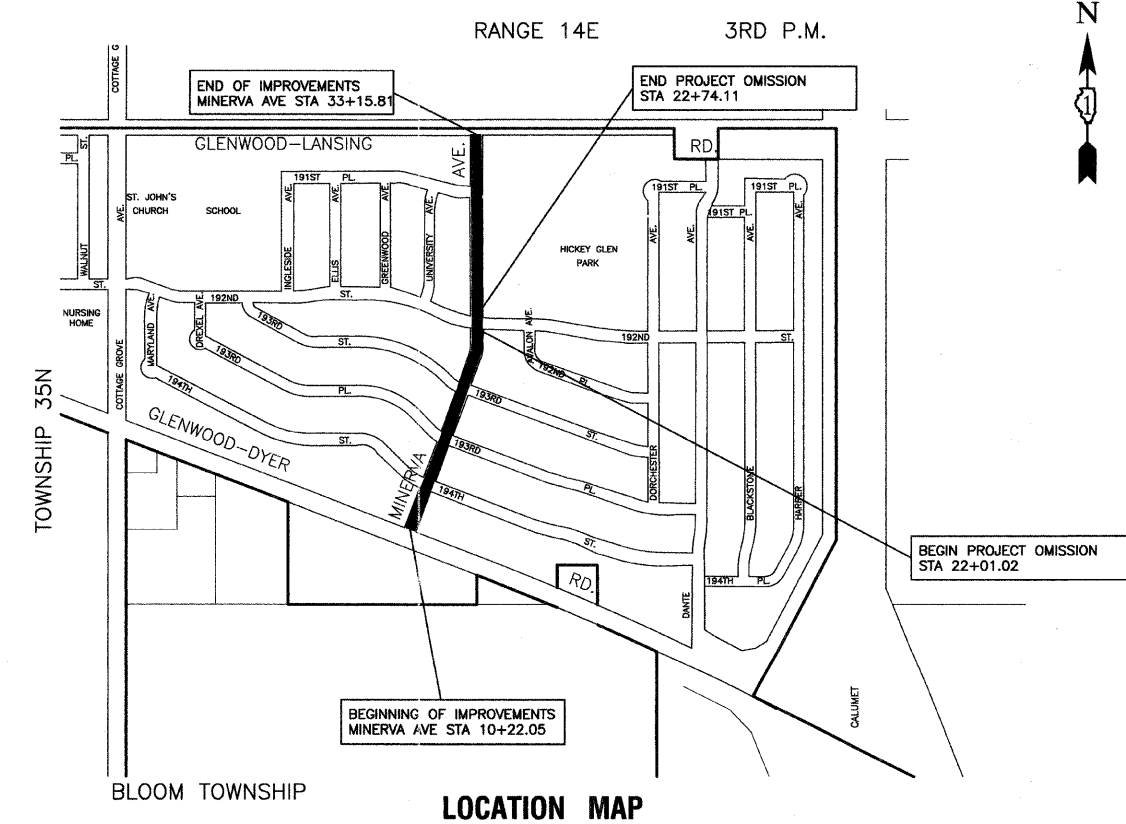
J. U. L. I. E.
 JOINT UTILITY LOCATION INFORMATION FOR EXCAVATION
 1-800-892-0123 or 811

CONTRACT NO. 63678

PROGRAM AND OFFICE ENGINEER: CHARLES F. RIDDLE, PE (847)705-4406 SCHAUMBURG, IL
 CONSULTANTS: ROBINSON ENGINEERING, LTD. 708-331-6700



LOCATION OF SECTION INDICATED THUS: - [black rectangle] -



LOCATION MAP

GROSS LENGTH=2,294 FEET=0.43 MILES
 NET LENGTH=2,221 FEET=0.42 MILES

STATE OF ILLINOIS DEPARTMENT OF TRANSPORTATION
DIVISION OF HIGHWAYS

Approved: [Signature] 1-31-2012
 President, Village of Glenwood

Passed: FEBRUARY 14, 2012
[Signature]
 District 1 Engineer of Local Roads & Streets

Released for Bid Based on Limited Review: FEBRUARY 14, 2012
[Signature]
 Deputy Director of Highways, Region 1 Engineer

PRINTED BY THE AUTHORITY OF THE STATE OF ILLINOIS

PREPARED BY OR UNDER THE DIRECT SUPERVISION OF:
[Signature]
 1-31-12

