

04-27-12 LETTING ITEM 020

STATE OF ILLINOIS
DEPARTMENT OF TRANSPORTATION
DIVISION OF HIGHWAYS
**PLANS FOR PROPOSED
FEDERAL AID HIGHWAY**

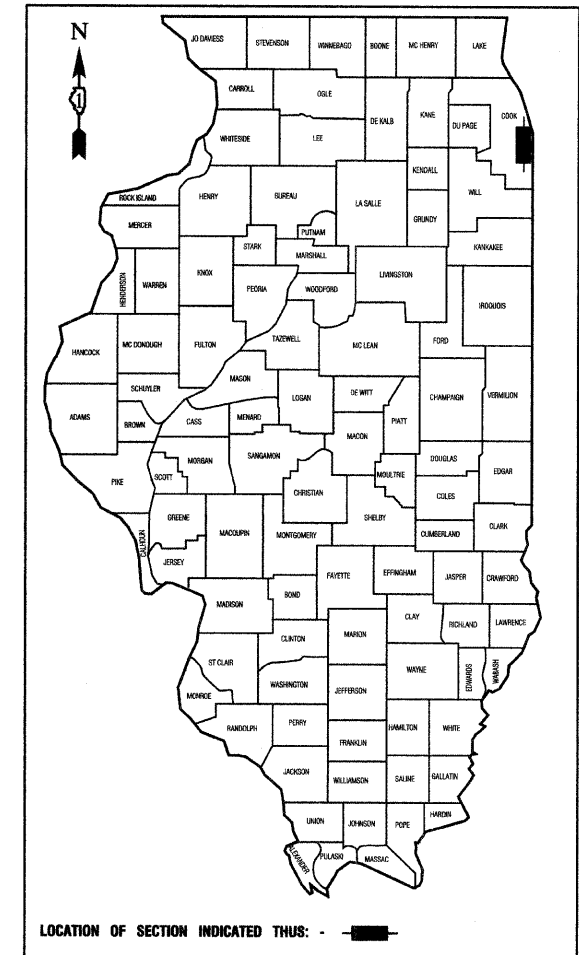
FAU 1072 (DANTE AVENUE)
FAU 3603(GLENWOOD-DYER ROAD) TO
FAU 1627 (GLENWOOD-LANSING ROAD)
ROADWAY RESURFACING
SECTION NO.: 11-00054-00-RS
PROJECT NO. : M-9003(906)
VILLAGE of GLENWOOD
COOK COUNTY
JOB NO. C-91-163-12

F. A. U. NO.	SECTION	COUNTY	TOTAL SHEETS	SHEET NO.
1072	11-00054-00-RS	COOK	10	1
STA.	TO STA.			
FED. ROAD DIST. NO. 1	ILLINOIS	FED. AID PROJECT M-9003(906)		

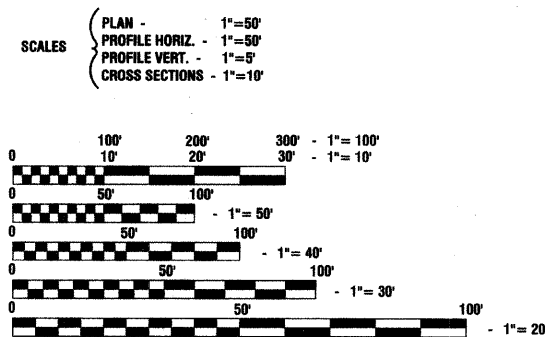
CONTRACT #63679

- INDEX OF SHEETS**
- COVER SHEET, INDEX OF SHEETS & STATE STANDARDS
 - SUMMARY OF QUANTITIES & GENERAL NOTES
 - TYPICAL CROSS SECTIONS
 - PAVEMENT PLAN
 - PAVEMENT MARKINGS
 - 10. IDOT DISTRICT 1 STANDARD DETAILS

- HIGHWAY STANDARDS**
- | | |
|-----------|--|
| 000001-06 | STANDARD SYMBOLS, ABBREVIATIONS AND PATTERNS |
| 424001-06 | PERPENDICULAR CURB RAMPS FOR SIDEWALKS |
| 442201-03 | CLASS C AND D PATCHES |
| 606001-04 | CONCRETE CURB TYPE B AND COMBINATION CONCRETE CURB AND GUTTER |
| 701501-06 | URBAN LANE CLOSURE, 2L, 2W, UNDIVIDED |
| 701801-05 | LANE CLOSURE, MULTILANE 1W OR 2W CROSSWALK OR SIDEWALK CLOSURE |
| 701901-02 | TRAFFIC CONTROL DEVICES |



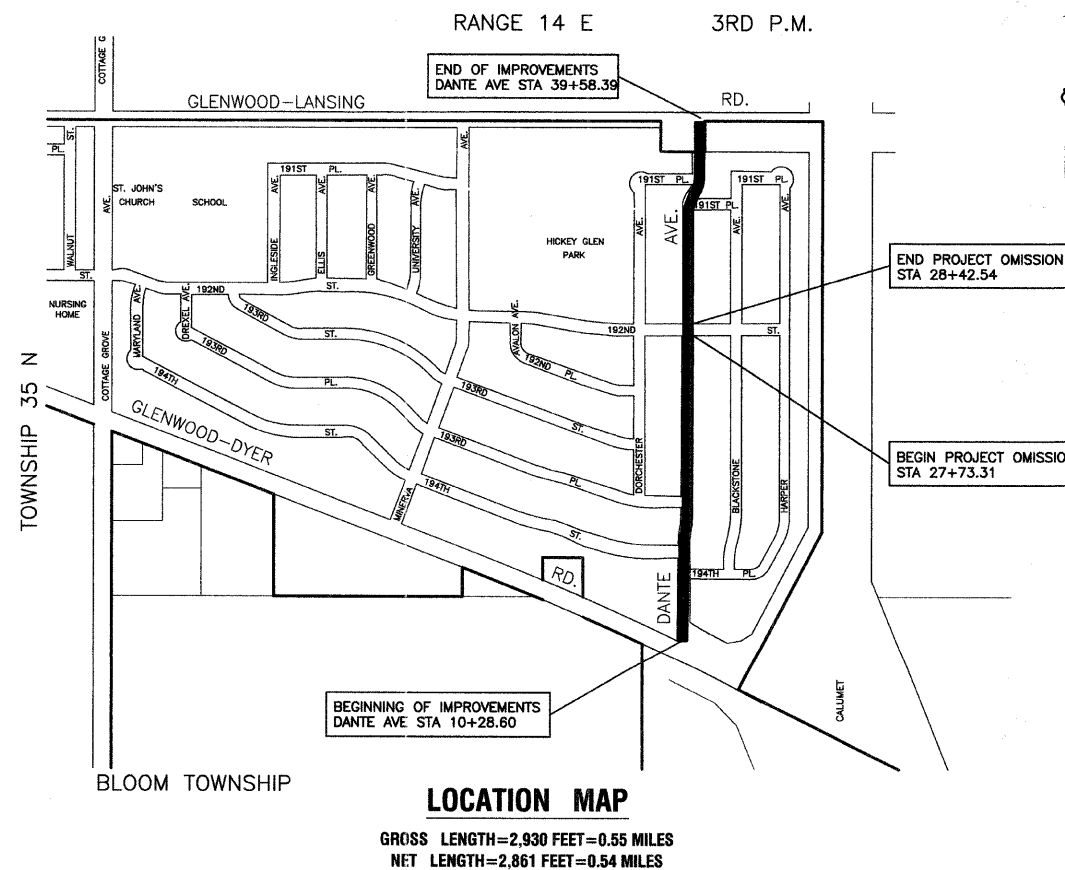
	DANTE AVENUE
2010 ADT -	2,500
2040 ADT -	2,500
POSTED SPEED LIMIT -	25 mph
DESIGN PERIOD -	20 YEARS
DESIGN SPEED LIMIT -	30 mph
DESIGN DESIGNATION -	URBAN, COLLECTOR



FULL SIZE PLANS HAVE BEEN PREPARED USING STANDARD ENGINEERING SCALES, REDUCED SIZED PLANS WILL NOT CONFORM TO STANDARD SCALES, IN MAKING MEASUREMENTS ON REDUCED PLANS, THE ABOVE SCALES MAY BE USED.

J. U. L. I. E.
JOINT UTILITY LOCATION INFORMATION FOR EXCAVATION
1-800-892-0123 or 811

CONTRACT NO. 63679



STATE OF ILLINOIS DEPARTMENT OF TRANSPORTATION
DIVISION OF HIGHWAYS

Approved: 1-31-2012
Randy White
President, Village of Glenwood

Passed: FEBRUARY 14, 2014
Chris Smith
District 1 Engineer of Local Roads & Streets

Released for Bid Based on Limited Review: FEBRUARY 14, 2012
Diana M. O'Keefe
Deputy Director of Highways, Region 1 Engineer

PRINTED BY THE AUTHORITY OF
THE STATE OF ILLINOIS

PREPARED BY OR UNDER THE
DIRECT SUPERVISION OF:

John K. Baker
1-31-12



LICENSE EXPIRES: 11/30/13

PROGRAM AND OFFICE ENGINEER: CHARLES F. RIDDLE, PE (847)705-4406 SCHAUMBURG, IL
CONSULTANTS: ROBINSON ENGINEERING, LTD. 708-331-6700

SUMMARY OF QUANTITIES				
S.I. CODE NO.	PAY ITEM	UNIT	QUAN	CONSTRUCTION TYPE CODE
				0005
20101700	SUPPLEMENTAL WATERING	UNIT	2	2
21101615	TOPSOIL FURNISH AND PLACE, 4"	SQ YD	156	156
25200110	SODDING, SALT TOLERANT	SQ YD	156	156
40600100	BITUMINOUS MATERIALS (PRIME COAT)	GALLON	2245	2245
40600300	AGGREGATE (PRIME COAT)	TON	23	23
40600827	POLYMERIZED LEVELING BINDER (MACHINE METHOD), IL-4.75, N50	TON	489	489
40600895	CONSTRUCTING TEST STRIP	EACH	1	1
40600982	HOT-MIX ASPHALT SURFACE REMOVAL - BUTT JOINT	SQ YD	452	452
40603335	HOT-MIX ASPHALT SURFACE COURSE, MIX "D", N50	TON	975	975
42300300	PORTLAND CEMENT CONCRETE DRIVEWAY PAVEMENT, 7 INCH	SQ YD	70	70
42400200	PORTLAND CEMENT CONCRETE SIDEWALK 5 INCH	SQ FT	610	610
42400800	DETECTABLE WARNINGS	SQ FT	200	200
44000157	HOT-MIX ASPHALT SURFACE REMOVAL, 2"	SQ YD	11153	11153
44000200	DRIVEWAY PAVEMENT REMOVAL	SQ YD	104	104
44000600	SIDEWALK REMOVAL	SQ FT	610	610
44201725	CLASS D PATCHES, TYPE I, 7 INCH	SQ YD	10	10
44201729	CLASS D PATCHES, TYPE II, 7 INCH	SQ YD	34	34
44201733	CLASS D PATCHES, TYPE III, 7 INCH	SQ YD	111	111
44201735	CLASS D PATCHES, TYPE IV, 7 INCH	SQ YD	126	126
60250200	CATCH BASINS TO BE ADJUSTED	EACH	16	16
60255500	MANHOLES TO BE ADJUSTED	EACH	1	1
60266600	VALVE BOXES TO BE ADJUSTED	EACH	1	1
67100100	MOBILIZATION	L SUM	1	1
70102620	TRAFFIC CONTROL AND PROTECTION, STANDARD 701501	L SUM	1	1
70102640	TRAFFIC CONTROL AND PROTECTION, STANDARD 701801	L SUM	1	1
70300100	SHORT TERM PAVEMENT MARKING	FOOT	735	735
* 78000200	THERMOPLASTIC PAVEMENT MARKING - LINE 4"	FOOT	930	930

* - INDICATES SPECIALTY ITEMS

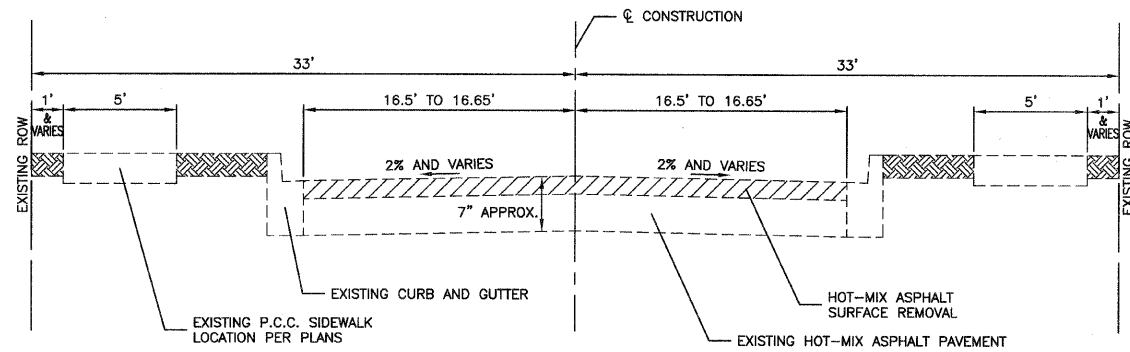
SUMMARY OF QUANTITIES				
S.I. CODE NO.	PAY ITEM	UNIT	QUAN	CONSTRUCTION TYPE CODE
				0005
* 78000400	THERMOPLASTIC PAVEMENT MARKING - LINE 6"	FOOT	260	260
* 78000650	THERMOPLASTIC PAVEMENT MARKING - LINE 24"	FOOT	115	115
X6030310	FRAMES AND LIDS TO BE ADJUSTED (SPECIAL)	EACH	1	1
Z0004518	HOT-MIX ASPHALT DRIVEWAY PAVEMENT, 5"	SQ YD	36	36
Z0004562	COMBINATION CONCRETE CURB AND GUTTER REMOVAL AND REPLACEMENT	FOOT	800	800

* - INDICATES SPECIALTY ITEMS

GENERAL NOTES

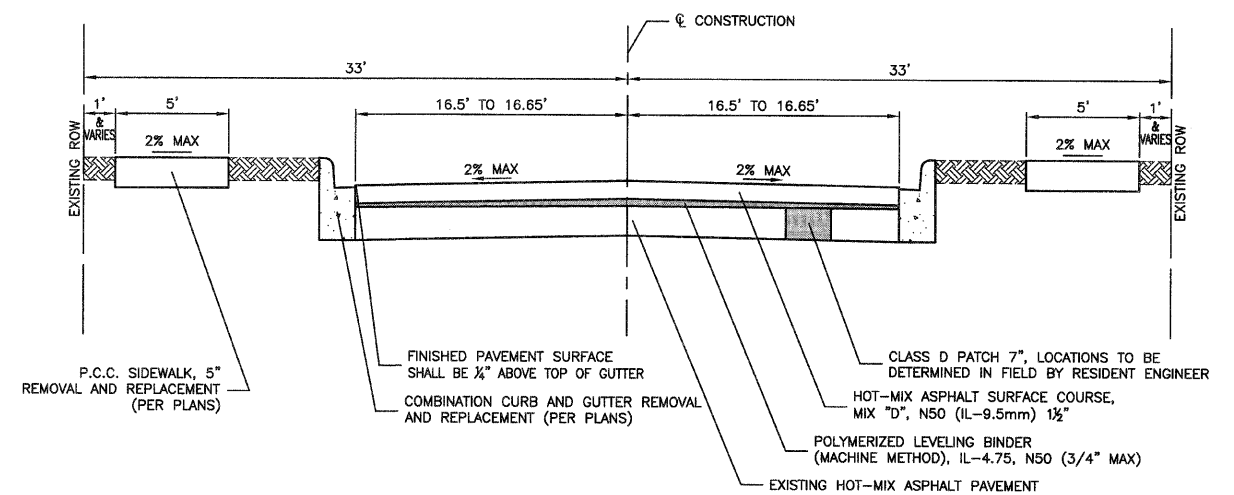
- BEFORE STARTING ANY EXCAVATION THE CONTRACTOR SHALL CALL "J.U.L.I.E." AT (800) 892-0123 AND (312) 744-7000 FOR FIELD LOCATIONS OF BURIED ELECTRIC, TELEPHONE AND GAS UTILITIES. (48 HOUR NOTIFICATION REQUIRED)
- UTILITIES INDICATED ON THE PLANS ARE PROVIDED FOR THE CONTRACTORS USE AND ARE BASED UPON INFORMATION AVAILABLE AT THE TIME OF THE ADVERTISEMENT FOR BIDS. THE OWNER AND ENGINEER DO NOT GUARANTEE THE ACCURACY OF UTILITY INFORMATION.
- IT SHALL BE THE CONTRACTOR'S RESPONSIBILITY TO VERIFY ALL DIMENSIONS AND CONDITIONS EXISTING IN THE FIELD PRIOR TO CONSTRUCTION AND ORDERING OF MATERIALS.
- THE THICKNESS OF HMA MIXTURE STATED IN THE SPECIFICATIONS IS THE NOMINAL THICKNESS. DEVIATIONS FROM THE NOMINAL THICKNESS WILL BE PERMITTED WHEN SUCH DEVIATIONS OCCUR DUE TO IRREGULARITIES IN THE EXISTING SURFACE OR BASE ON WHICH THE HMA SURFACE IS PLACED.
- ACCESS TO DRIVEWAYS SHALL BE MAINTAINED AT ALL TIMES BY LIMITING CURB AND GUTTER REPAIR TO ONE-HALF THE DRIVEWAY WIDTH AT ONE TIME AS WELL AS TEMPORARY AGGREGATE.
- THE REMOVAL AND/OR REPLACEMENT OF ANY DRIVEWAYS, PAVEMENT, CURB, SIDEWALK, ETC. SHALL BE ACCOMPLISHED BY MEANS OF A SAW CUT JOINT, AT THE DIRECTION OF THE ENGINEER. THIS WORK WILL NOT BE PAID FOR SEPARATELY, BUT SHALL BE INCLUDED IN THE UNIT PRICE FOR THE VARIOUS ITEMS.
- ANY LOOSE MATERIAL DEPOSITED IN THE FLOW LINE OF DITCHES, GUTTERS OR OTHER DRAINAGE STRUCTURES SHALL BE REMOVED BY THE END OF EACH DAY BY THE CONTRACTOR AT THEIR EXPENSE.
- FOR WORK OUTSIDE THE LIMITS OF BRIDGE APPROACH PAVEMENT, ALL REFERENCES IN THE HIGHWAY STANDARDS AND STANDARD SPECIFICATIONS FOR REINFORCEMENT, DOWEL BARS AND TIE BARS IN PAVEMENT, SHOULDERS, CURB, GUTTER, COMBINATION CURB AND GUTTER AND MEDIAN, AND CHAIR SUPPORTS FOR CRC PAVEMENT, SHALL BE EPOXY COATED, UNLESS OTHERWISE NOTED ON THE PLAN.

FILE NAME = 11427-QUAN-01 - IDOT QUAN	USER NAME =	DESIGNED -- DWS	REVISED --	STATE OF ILLINOIS DEPARTMENT OF TRANSPORTATION	DANTE AVENUE IMPROVEMENTS SUMMARY OF QUANTITIES & GENERAL NOTES	F.A.U. RTE.	SECTION	COUNTY	TOTAL SHEETS	SHEET NO.	
		CHECKED -- JH/PB	REVISED --			1072	11-00054-00-RS	COOK	10	2	
	PLOT SCALE =	DRAWN -- MED	REVISED --			CONTRACT NO. 63679					
	PLOT DATE = 1-31-12	CHECKED -- AG	REVISED --			SCALE: NONE	SHEET NO. 2 OF 10 SHEETS	STA. TO STA.	FED. ROAD DIST. NO. 1 ILLINOIS FED. AID PROJECT M-9003(906)		



EXISTING TYPICAL SECTION

DANTE AVENUE
 GLENWOOD-DYER ROAD TO GLENWOOD-LANSING ROAD
 STA 10+28.60 TO STA 27+73.31
 & STA. 28+42.54 TO 39+58.39



PROPOSED TYPICAL SECTION

DANTE AVENUE
 GLENWOOD-DYER ROAD TO GLENWOOD-LANSING ROAD
 STA 10+28.60 TO STA 27+73.31
 & STA. 28+42.54 TO 39+58.39

NOTE: CONTRACTOR SHALL MILL BEFORE PATCHING

HOT-MIX ASPHALT MIXTURE REQUIREMENTS

NOTE: CONTRACTOR SHALL MILL BEFORE PATCHING

MIXTURE TYPE	AIR VOIDS @ NDES
RESURFACING	
HOT MIX ASPHALT SURFACE COURSE, MIX "D", N50 (IL-9.5mm); 1 1/2"	4% @ 50 Gyr.
POLYMERIZED LEVELING BINDER (MACHINE METHOD), IL-4.75, N50, (3/4")	3.5% @ 50 Gyr.
DRIVEWAYS	
HOT MIX ASPHALT SURFACE COURSE, MIX "D", N50 (IL-9.5mm); 2"	4% @ 50 Gyr.
HOT MIX ASPHALT BASE COURSE, (HMA BINDER IL-19.0mm); 3"	4% @ 50 Gyr.
PATCHING	
CLASS D PATCHES, TYPE I, II, III, IV (HMA BINDER IL-19.0mm), 7" (IN 3 LIFTS)	4% @ 70 Gyr.

NOTES:

- THE UNIT WEIGHT USED TO CALCULATE ALL HOT-MIX ASPHALT SURFACE MIXTURE QUANTITIES IS 112 LBS/SY/IN.
- THE "AC TYPE" FOR POLYMERIZED HMA MIXES SHALL BE "SBS/SBR PG 76-22" AND FOR NON-POLYMERIZED HMA THE "AC" TYPE" SHALL BE "PG 64-22" UNLESS MODIFIED BY DISTRICT ONE SPECIAL PROVISIONS. FOR "PERCENT OF RAP" SEE DISTRICT ONE SPECIAL PROVISIONS.

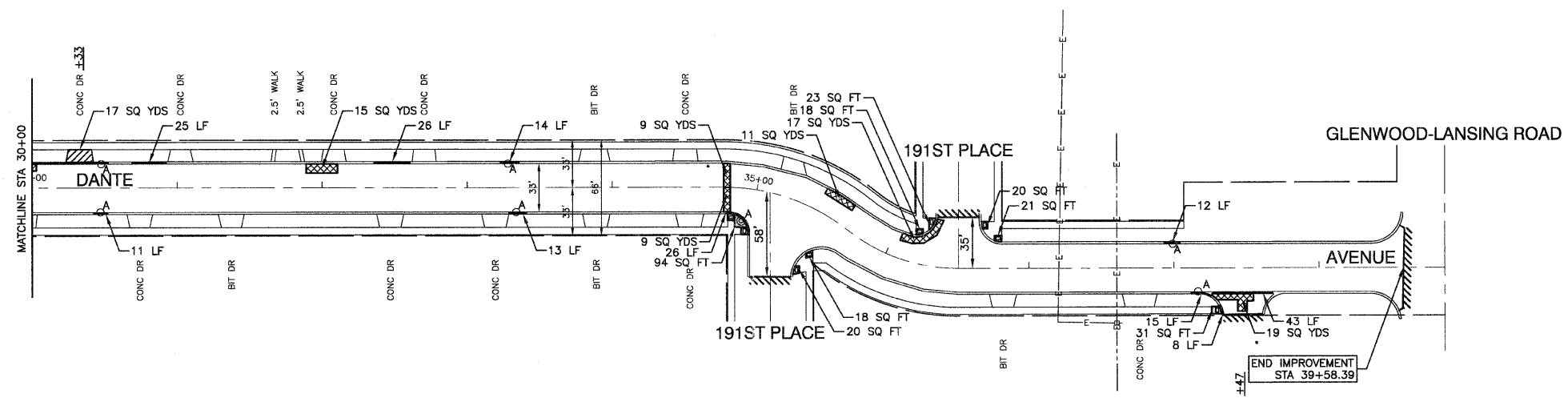
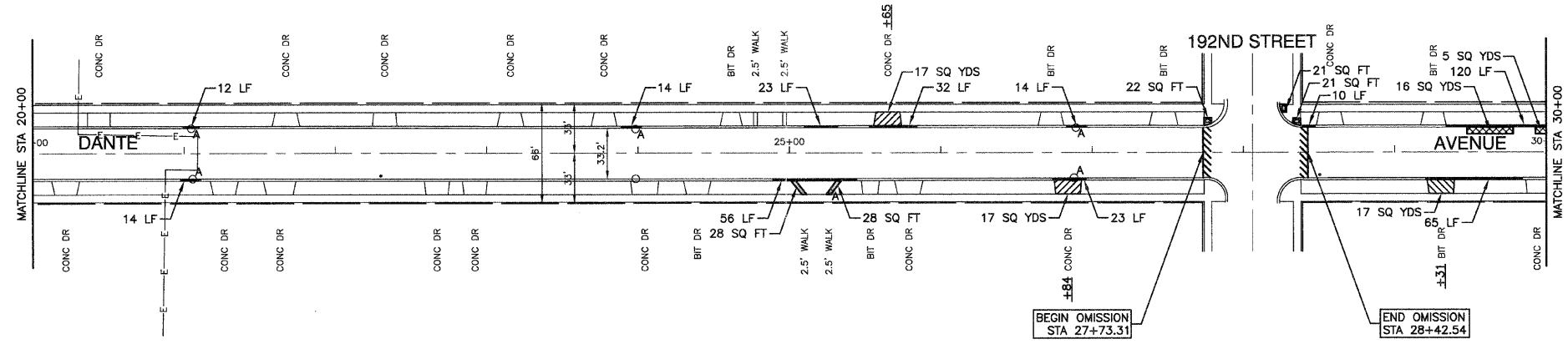
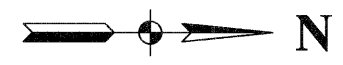
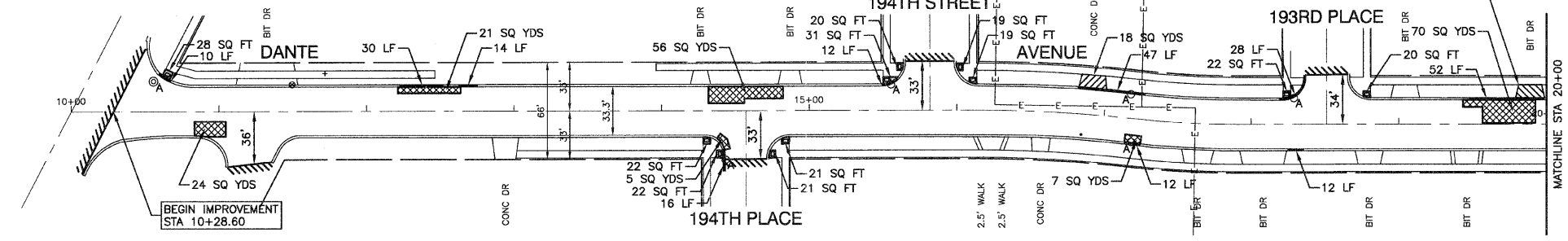
FILE NAME = 11427-TYPX-01 - IDOT P01

USER NAME =	DESIGNED -- DWS	REVISED --
	CHECKED -- JH/PB	REVISED --
PLOT SCALE =	DRAWN -- MED	REVISED --
PLOT DATE = 1-31-12	CHECKED -- AG	REVISED --

STATE OF ILLINOIS
 DEPARTMENT OF TRANSPORTATION

DANTE AVENUE IMPROVEMENTS TYPICAL CROSS SECTIONS		F.A.U. RTE. 1072	SECTION 11-00054-00-RS	COUNTY COOK	TOTAL SHEETS 10	SHEET NO. 3
SCALE: NONE		SHEET NO. 3 OF 10 SHEETS		STA. 10+28.60 TO STA. 39+58.39		FED. ROAD DIST. NO. 1 ILLINOIS
CONTRACT NO. 63679						
FED. AID PROJECT M-9003(906)						

GLENWOOD-DYER ROAD



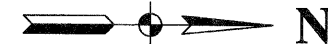
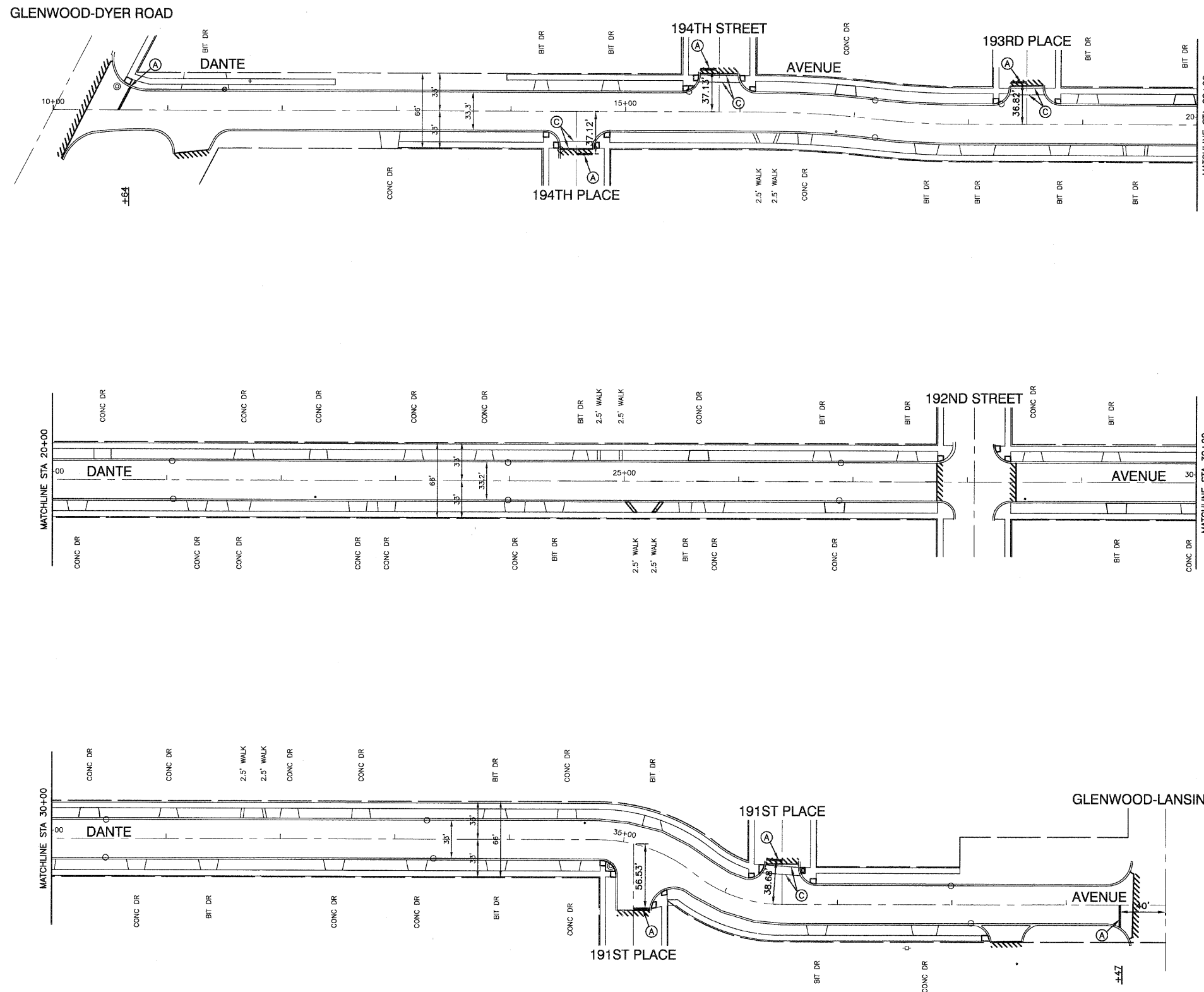
NOTES:

1. DETECTABLE WARNINGS ARE TO BE INSTALLED AT LOCATIONS OF SIDEWALK REMOVAL AND REPLACEMENT. CONTRACTOR TO POSITION AND PLACE DETECTABLE WARNINGS AT THE DIRECTION OF THE ENGINEER IN ACCORDANCE WITH ADA REQUIREMENTS.
2. LIMIT OF CONSTRUCTION ON ALL SIDE STREETS IS THE RADIUS RETURN PLUS 10' BUTT JOINT OR ROW AS NOTED.
3. ACCESS TO ALL DRIVEWAYS SHALL BE MAINTAINED UPON COMPLETION OF EACH WORKDAY. RESIDENTS SHALL BE NOTIFIED 24 HOURS IN ADVANCE OF WHEN DRIVEWAY REPLACEMENT WILL TAKE PLACE.

LEGEND

- CLASS D PATCH
- HMA DRIVEWAY REMOVAL AND REPLACEMENT
- CONCRETE DRIVEWAY REMOVAL AND REPLACEMENT
- CONCRETE SIDEWALK REMOVAL AND REPLACEMENT
- BUTT JOINTS
- CURB REMOVAL AND REPLACEMENT
- CATCH BASIN TO BE ADJUSTED, MANHOLE TO BE ADJUSTED, VALVE BOX TO BE ADJUSTED, FRAME & LID TO BE ADJUSTED (SPECIAL)
- "A"
- DETECTABLE WARNINGS

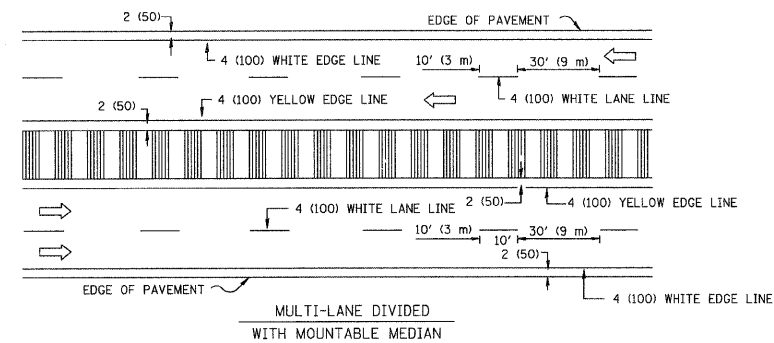
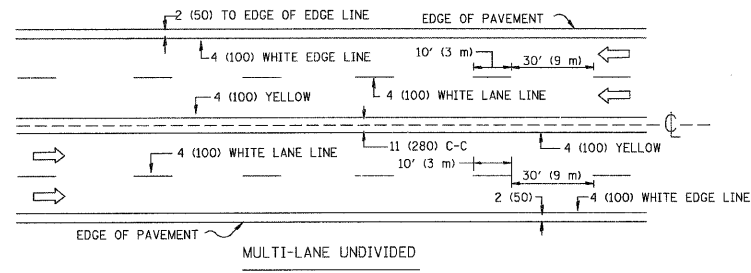
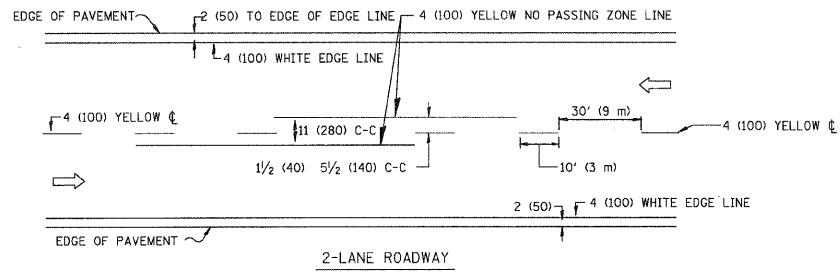
FILE NAME = 11427-PLAN-01 - IDOT P01	USER NAME =	DESIGNED -- DWS	REVISED --	STATE OF ILLINOIS DEPARTMENT OF TRANSPORTATION	DANTE AVENUE IMPROVEMENTS PAVEMENT PLAN	F.A.U. RITE	SECTION	COUNTY	TOTAL SHEETS	SHEET NO.
	PLOT SCALE =	CHECKED -- JH/PB	REVISED --			1072	11-00054-00-RS	COOK	10	4
LAST SAVED BY: PASTERNAK ON 11/2/12 PLOTTER: BULL PLOTTER 11/2/12	PLOT DATE = 1-31-12	DRAWN -- MED/RG	REVISED --	SCALE: 1"=50'	SHEET NO. 4 OF 10 SHEETS	STA. 10+28.60 TO STA. 39+58.39	CONTRACT NO. 63679			
		CHECKED -- AG	REVISED --				FED. ROAD DIST. NO. 1	ILLINOIS	FED. AID PROJECT	M-9003(908)



NOTES:
 1. FINAL LOCATIONS OF STOP BARS SHALL BE DETERMINED BY THE ENGINEER.

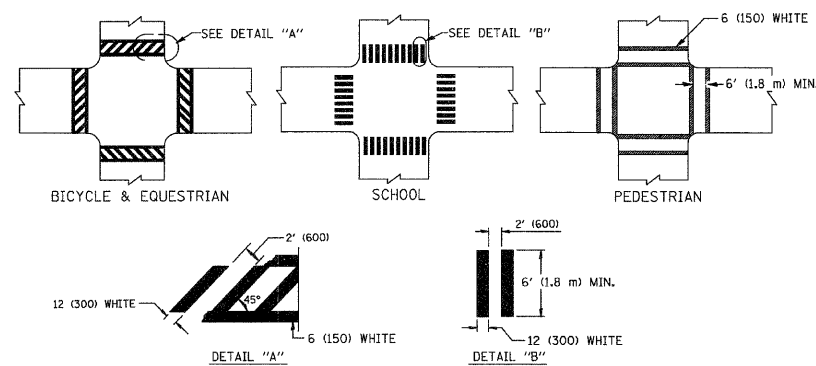
- LEGEND**
- (A) THERMOPLASTIC PAVEMENT MARKING WHITE, 24"
 - (B) THERMOPLASTIC PAVEMENT MARKING YELLOW, LINE, 4", SKIP DASH (10' LINE-30' SPACE)
 - (C) THERMOPLASTIC PAVEMENT MARKING WHITE, LINE, 6"
 - (D) THERMOPLASTIC PAVEMENT MARKING YELLOW, DOUBLE LINE, 4"

FILE NAME = 11427-PLAN-01 - PVMK P01	USER NAME =	DESIGNED -- DWS	REVISIONS	STATE OF ILLINOIS DEPARTMENT OF TRANSPORTATION	DANTE AVENUE IMPROVEMENTS PAVEMENT MARKING		F.A.U. RTE.	SECTION	COUNTY	TOTAL SHEETS	SHEET NO.
	PLOT SCALE =	CHECKED -- JH/PB	REVISIONS				1072	11-00054-00-RS	COOK	10	5
PLOT DATE = 1-31-12	DRAWN -- MED/RG	REVISIONS		SCALE: 1"=50'		SHEET NO. 5 OF 10 SHEETS		STA. 10+28.60 TO STA. 39+58.39		CONTRACT NO. 63679	
	CHECKED -- AG	REVISIONS				FED. ROAD DIST. NO. 1		ILLINOIS		FED. AID PROJECT M-9003(906)	

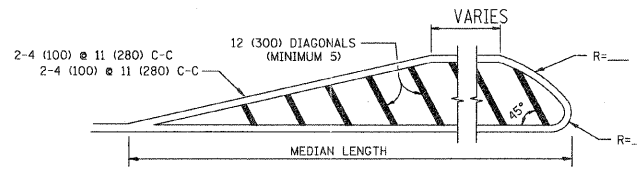
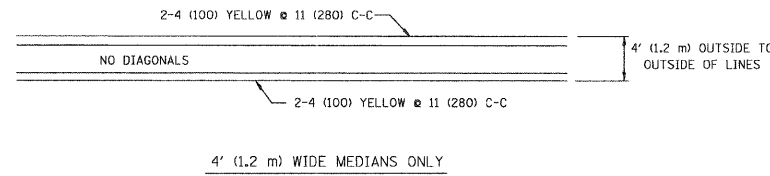


NOTE: MEDIANS WITH BARRIER CURB DO NOT REQUIRE AN EDGE LINE

TYPICAL LANE AND EDGE LINE MARKING



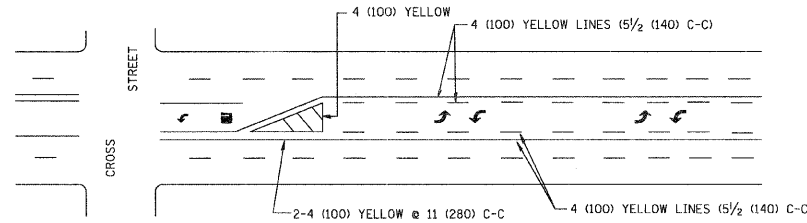
TYPICAL CROSSWALK MARKING



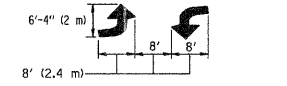
FOR MEDIAN LENGTHS WHERE DIAGONAL SPACING CANNOT BE ATTAINED, USE 5 (FIVE) EQUALLY SPACED DIAGONAL LINES.

DIAGONAL LINE SPACING: 50' (15 m) C-C (LESS THAN 30MPH (50 km/h))
75' (25 m) C-C 30MPH (50 km/h) TO 45MPH (70 km/h)
150' (45 m) C-C (MORE THAN 45MPH (70 km/h))

MEDIANS OVER 4' (1.2 m) WIDE

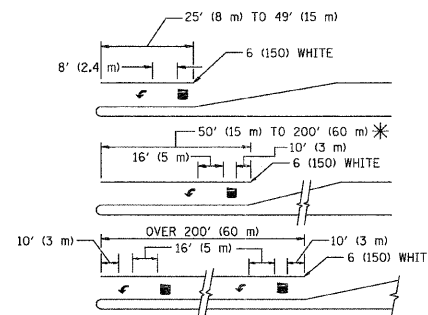


A MINIMUM OF TWO PAIRS OF TURN ARROWS SHALL BE USED, WHITE IN COLOR. ADDITIONAL PAIRS SHALL BE PLACED AT 200' (60 m) TO 300' (90 m) INTERVALS.



MEDIAN WITH TWO-WAY LEFT TURN LANE

TYPICAL PAINTED MEDIAN MARKING

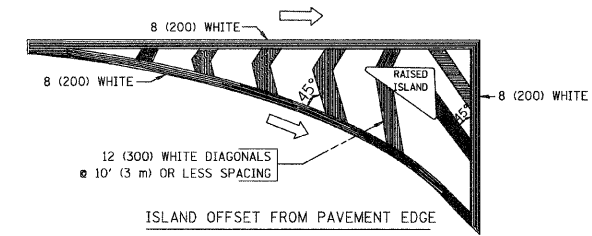


FULL SIZE LETTERS 8' (2.4 m) AND ARROWS SHALL BE USED.
AREA = 15.6 SQ. FT. (1.5 m²) ONLY AREA = 20.8 SQ. FT. (1.9 m²)

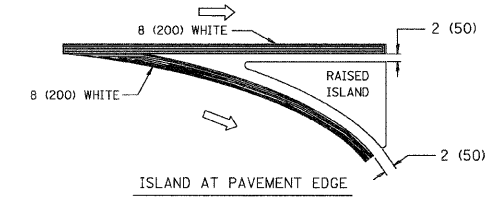
* TURN LANES IN EXCESS OF 400' (120 m) IN LENGTH MAY HAVE AN ADDITIONAL SET OF ARROW - "ONLY" INSTALLED MIDWAY BETWEEN THE OTHER TWO SETS OF ARROW - "ONLY".

TYPICAL LEFT (OR RIGHT) TURN LANE

TYPICAL TURN LANE MARKING



ISLAND OFFSET FROM PAVEMENT EDGE



ISLAND AT PAVEMENT EDGE

TYPICAL ISLAND MARKING

TYPE OF MARKING	WIDTH OF LINE	PATTERN	COLOR	SPACING / REMARKS
CENTERLINE ON 2 LANE PAVEMENT	4 (100)	SKIP-DASH	YELLOW	10' (3 m) LINE WITH 30' (9 m) SPACE
CENTERLINE ON MULTI-LANE UNDIVIDED PAVEMENT	2 @ 4 (100)	SOLID	YELLOW	11 (280) C-C
NO PASSING ZONE LINES: FOR ONE DIRECTION	4 (100)	SOLID	YELLOW	5 1/2 (140) C-C FROM SKIP-DASH CENTERLINE
NO PASSING ZONE LINES: FOR BOTH DIRECTIONS	2 @ 4 (100)	SOLID	YELLOW	11 (280) C-C OMIT SKIP-DASH CENTERLINE BETWEEN
LANE LINES	4 (100)	SKIP-DASH	WHITE	10' (3 m) LINE WITH 30' (9 m) SPACE
LANE LINES	5 (125) ON FREEWAYS	SKIP-DASH	WHITE	
DOTTED LINES (EXTENSIONS OF CENTER, LANE OR TURN LANE MARKINGS)	SAME AS LINE BEING EXTENDED	SKIP-DASH	SAME AS LINE BEING EXTENDED	2' (600) LINE WITH 6' (1.8 m) SPACE
EDGE LINES	4 (100)	SOLID	YELLOW-LEFT WHITE-RIGHT	OUTLINE MOUNTABLE MEDIANS IN YELLOW. EDGE LINES ARE NOT USED NEXT TO BARRIER CURB
TURN LANE MARKINGS	6 (150) LINE; FULL SIZE LETTERS & SYMBOLS (8' (2.4m))	SOLID	WHITE	SEE TYPICAL TURN LANE MARKING DETAIL
TWO WAY LEFT TURN MARKING	2 @ 4 (100) EACH DIRECTION	SKIP-DASH AND SOLID	YELLOW	10' (3 m) LINE WITH 30' (9 m) SPACE FOR SKIP-DASH; 5 1/2 (140) C-C BETWEEN SOLID LINE AND SKIP-DASH LINE
TWO WAY LEFT TURN MARKING	8' (2.4m) LEFT ARROW	IN PAIRS	WHITE	SEE TYPICAL TWO-WAY LEFT TURN MARKING DETAIL
CROSSWALK LINES (PEDESTRIAN) A. DIAGONALS (BIKE & EQUESTRIAN) B. LONGITUDINAL BARS (SCHOOL)	2 @ 6 (150) 12 (300) @ 45° 12 (300) @ 90°	SOLID SOLID SOLID	WHITE WHITE WHITE	NOT LESS THAN 6' (1.8 m) APART 2' (600) APART SEE TYPICAL CROSSWALK MARKING DETAILS.
STOP LINES	24 (600)	SOLID	WHITE	PLACE 4' (1.2 m) IN ADVANCE OF AND PARALLEL TO CROSSWALK, IF PRESENT. OTHERWISE, PLACE AT DESIRED STOPPING POINT, PARALLEL TO CROSSROAD CENTERLINE, WHERE POSSIBLE
PAINTED MEDIANS	2 @ 4 (100) WITH 12 (300) DIAGONALS @ 45°	SOLID	YELLOW; TWO WAY TRAFFIC WHITE; ONE WAY TRAFFIC	11 (280) C-C FOR THE DOUBLE LINE SEE TYPICAL PAINTED MEDIAN MARKING.
GORE MARKING AND CHANNELIZING LINES	8 (200) WITH 12 (300) DIAGONALS @ 45°	SOLID	WHITE	DIAGONALS: 15' (4.5 m) C-C (LESS THAN 30MPH (50 km/h)) 20' (6 m) C-C 30MPH (50 km/h) TO 45MPH (70 km/h) 30' (9 m) C-C (OVER 45MPH (70 km/h))
RAILROAD CROSSING	24 (600) TRANSVERSE LINES; "RR" 15' (4.5 m) MIN. LETTERS; 16 (400) LINE FOR "X"	SOLID	WHITE	SEE STATE STANDARD 780001 AREA OF: "R"=3.6 SQ. FT. (0.33 m ²) EACH "X"=54.0 SQ. FT. (5.0 m ²)
SHOULDER DIAGONALS	12 (300) @ 45°	SOLID	WHITE - RIGHT YELLOW - LEFT	50' (15 m) C-C (LESS THAN 30MPH (50 km/h)) 75' (25 m) C-C (30 MPH (50 km/h) TO 45MPH (70 km/h)) 150' (45 m) C-C (OVER 45MPH (70 km/h))

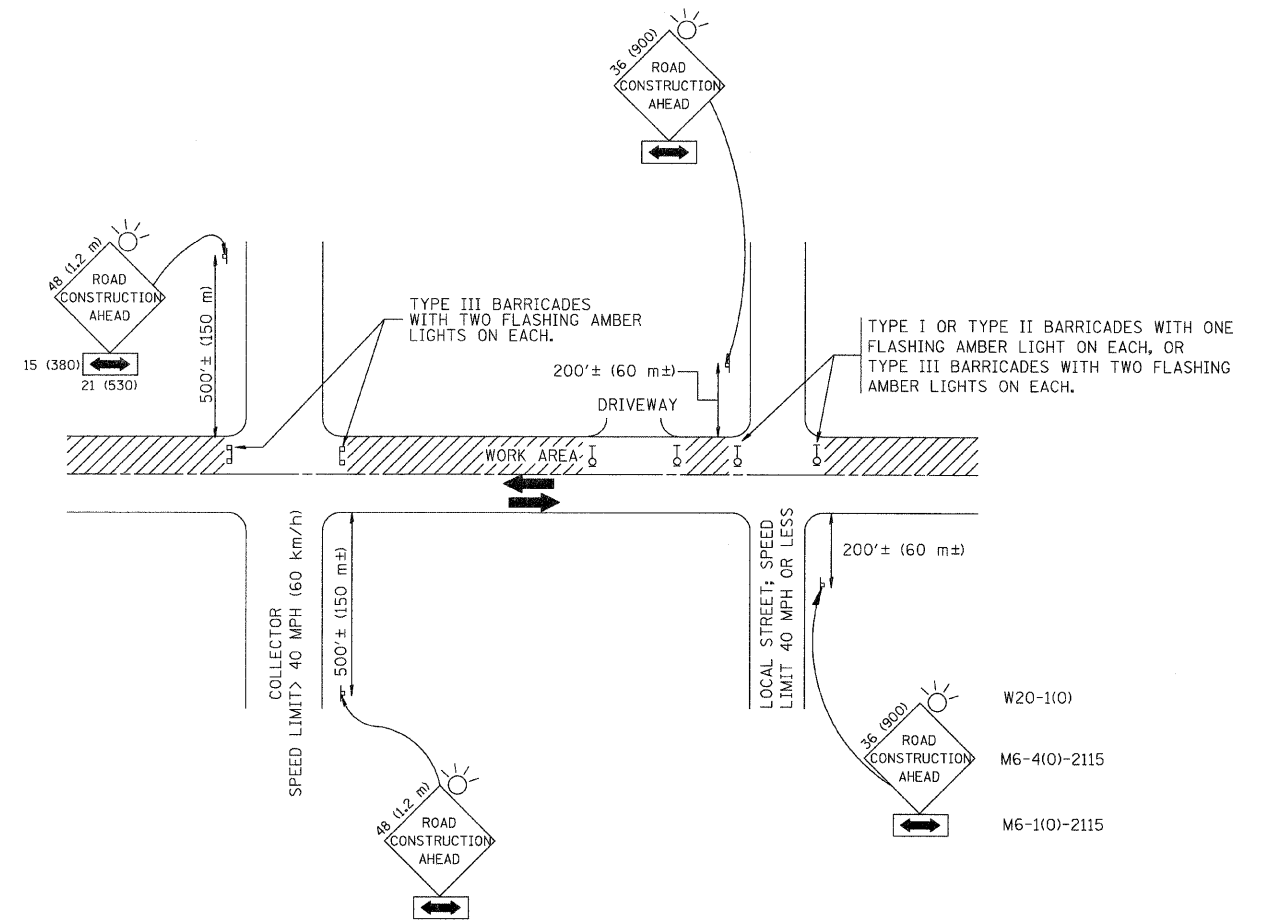
FOR FURTHER DETAILS ON PAVEMENT MARKING REFER TO STANDARD SPECIFICATIONS FOR ROAD AND BRIDGE CONSTRUCTION AND STATE STANDARD 780001.

All dimensions are in inches (millimeters) unless otherwise shown.

FILE NAME = 11427-DTSL-06-TC13 - TC-13	USER NAME = drivakoagn	DESIGNED = EVERS	REVISED = T. RAMMACHER 10-27-94
		CHECKED =	REVISED = C. JUCIUS 09-09-09
	PLOT SCALE = 50.000 / IN.	DRAWN =	REVISED =
	PLOT DATE = 9/9/2009	CHECKED = 03-19-90	REVISED =

STATE OF ILLINOIS
DEPARTMENT OF TRANSPORTATION

DISTRICT ONE				F.A.U. RTE.	SECTION	COUNTY	TOTAL SHEETS	SHEET NO.
TYPICAL PAVEMENT MARKINGS				1072	11-00054-00-RS	COOK	10	6
SCALE: SHEET NO. 6 OF 10 SHEETS STA. TO STA.				TC-13 CONTRACT NO. 63679				
				FED. ROAD DIST. NO. 1 ILLINOIS FED. AID PROJECT M-9003(906)				



TRAFFIC CONTROL AND PROTECTION FOR SIDE ROADS, INTERSECTIONS, AND DRIVEWAYS

NOTES:

- A. FOR NO LANE RESTRICTION ON THE SIDE ROAD OR DRIVEWAYS
- SIDE ROAD WITH A SPEED LIMIT OF 40 MPH (60 km/h) OR LESS AS SHOWN ON THE DRAWING AND AS DIRECTED BY THE ENGINEER:
 - ONE **ROAD CONSTRUCTION AHEAD** SIGN 36 x 36 (900x900) WITH A FLASHER AND FLAG MOUNTED ON IT APPROXIMATELY 200' (60 m) IN ADVANCE OF THE MAIN ROUTE.
 - THE CLOSED PORTION OF THE MAIN ROUTE SHALL BE PROTECTED BY BLOCKING WITH TYPE I, TYPE II OR TYPE III BARRICADES, 1/3 OF THE CROSS SECTION OF THE CLOSED PORTION.
 - SIDE ROAD WITH A SPEED LIMIT GREATER THAN 40 MPH (60 km/h) AS SHOWN ON THE DRAWING AND AS DIRECTED BY THE ENGINEER:
 - ONE **ROAD CONSTRUCTION AHEAD** SIGN 48 x 48 (1.2 m x 1.2 m) WITH A FLASHER MOUNTED ON IT APPROXIMATELY 500' (150 m) IN ADVANCE OF THE MAIN ROUTE.
 - THE CLOSED PORTION OF THE MAIN ROUTE SHALL BE PROTECTED BY BLOCKING WITH TYPE III BARRICADES, 1/2 OF THE CROSS SECTION OF THE CLOSED PORTION.
 - WHEN THE SIDE ROAD LIES BETWEEN THE BEGINNING OF THE MAINLINE SIGNING AND THE WORK ZONE, A SINGLE HEADED ARROW (M6-1) SHALL BE USED IN LIEU OF THE DOUBLE HEADED ARROW (M6-4).
- B. FOR A LANE CLOSURE ON A SIDE ROAD OR DRIVEWAY:
- USE APPLICABLE PORTIONS OF THE TYPICAL APPLICATION OF TRAFFIC CONTROL DEVICES (STD. 701501, STD. 701606 OR THE APPROPRIATE STANDARD). THE SPACING OF SIGNS AND BARRICADES SHALL BE ADJUSTED FOR FIELD CONDITIONS AS DIRECTED BY THE ENGINEER. THE DIRECTIONAL ARROW SHALL BE COVERED OR REMOVED WHEN NO LONGER CONSISTENT WITH THE SIDE ROAD LANE CLOSURE.
- C. ADVANCE WARNING SIGNS ARE TO BE OMITTED ON DRIVEWAY UNLESS OTHERWISE NOTED.
- D. THE TRAFFIC CONTROL AND PROTECTION FOR SIDE ROADS, INTERSECTIONS, AND DRIVEWAYS SHALL BE INCIDENTAL TO THE COST OF SPECIFIED TRAFFIC CONTROL STANDARDS OR ITEMS.

All dimensions are in millimeters (inches) unless otherwise shown.

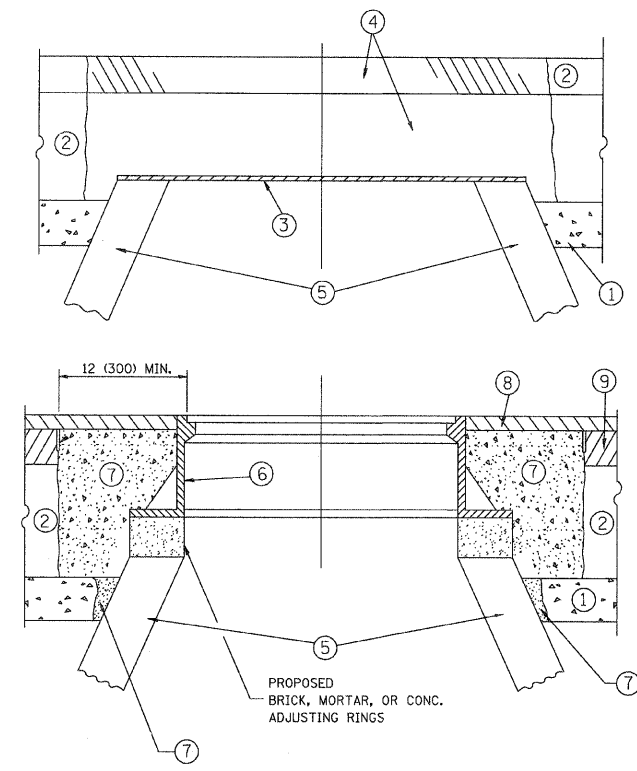
FILE NAME = 11427-D1LS-05-TC10 - TC-10	USER NAME = geglienobt	DESIGNED -- LHA	REVISED -- J. OBERLE 10-18-95
		CHECKED --	REVISED -- A. HOUSEH 03-06-96
	PLOT SCALE = 50.000' / IN.	DRAWN --	REVISED -- A. HOUSEH 10-15-96
	PLOT DATE = 1/4/2008	CHECKED -- 06-89	REVISED -- T. RAMMACHER 01-06-00

STATE OF ILLINOIS
DEPARTMENT OF TRANSPORTATION

TRAFFIC CONTROL AND PROTECTION FOR
SIDE ROADS, INTERSECTIONS, AND DRIVEWAYS

SCALE: SHEET NO. 7 OF 10 SHEETS STA. TO STA.

F.A.U. RTE.	SECTION	COUNTY	TOTAL SHEETS	SHEET NO.
1072	11-00054-00-RS	COOK	10	7
TC-10			CONTRACT NO. 63679	
FED. ROAD DIST. NO. 1 ILLINOIS FED. AID PROJECT M-9003(806)				



CONSTRUCTION PROCEDURES

STAGE 1 (BEFORE PAVEMENT MILLING)

- A) REMOVE A MINIMUM OF 12 (300) OF THE PAVEMENT FROM AROUND THE STRUCTURE.
- B) REMOVE THE EXISTING FRAME AND LID FROM THE STRUCTURE.
- C) COVER THE STRUCTURE OPENING WITH A 36 (900) DIAMETER METAL PLATE.
- D) BACKFILL WITH CRUSHED STONE AND A MINIMUM 1 1/2 (40) THICK HMA SURFACE MIX APPROVED BY THE ENGINEER.

STAGE 2 (AFTER PAVEMENT MILLING)

- A) REMOVE THE HMA SURFACE MIX AND CRUSHED STONE.
 - B) INSTALL THE FRAME AND LID; ADJUST THE FRAME TO ITS FINAL SURFACE ELEVATION.
 - C) THE SURROUNDING SPACE SHALL BE FILLED WITH CLASS PP-1* CONCRETE TO THE ELEVATION OF THE SURFACE OF THE EXISTING BASE COURSE OR THE BINDER COURSE.
- * UNLESS OTHERWISE SPECIFIED IN THE PLANS.

THE PROCEDURE EXPLAINED ABOVE SHALL CONFORM TO THE APPLICABLE PORTIONS OF SECTIONS 353, 406, 602, AND 603 OF THE STANDARD SPECIFICATIONS EXCEPT THAT THE CONTRACTOR SHALL ADJUST THE STRUCTURES TO THE FINISHED PAVEMENT ELEVATION NO MORE THAN 5 CALENDAR DAYS PRIOR TO PLACEMENT OF THE FINAL LIFT OF SURFACE UNLESS APPROVED BY THE ENGINEER.

LEGEND

- ① SUB-BASE GRANULAR MATERIAL
- ② EXISTING PAVEMENT
- ③ 36 (900) DIAMETER METAL PLATE
- ④ PROPOSED CRUSHED STONE AND HMA SURFACE MIX
- ⑤ EXISTING STRUCTURE
- ⑥ FRAME AND LID (SEE NOTES)
- ⑦ CLASS PP-1* CONCRETE
- ⑧ PROPOSED HMA SURFACE COURSE
- ⑨ PROPOSED HMA BINDER COURSE

LOCATION OF STRUCTURES:

THE CONTRACTOR WILL BE REQUIRED TO KEEP A RECORD OF THE LOCATIONS OF THE BURIED STRUCTURES ACCORDING TO THE STATION AND DISTANCE LEFT OR RIGHT OF THE CENTERLINE OF PAVEMENT. UPON COMPLETION OF THE WORK, THE CONTRACTOR WILL DELIVER THE RECORD TO THE ENGINEER.

BASIS OF PAYMENT:

REMOVING FRAMES AND LIDS ON DRAINAGE AND UTILITY STRUCTURES IN THE PAVEMENT PRIOR TO MILLING, AND ADJUSTING TO FINAL GRADE PRIOR TO PLACING THE SURFACE COURSE, WILL BE PAID FOR AT THE CONTRACT UNIT PRICE EACH FOR "FRAMES AND LIDS TO BE ADJUSTED (SPECIAL)."

THIS WORK WILL NOT BE PAID FOR WHEN DRAINAGE AND UTILITY STRUCTURES ARE SPECIFIED FOR PAYMENT AS STRUCTURE RECONSTRUCTION.

NEW FRAMES AND LIDS, WHEN SPECIFIED, WILL BE PAID FOR SEPARATELY.

NOTES:

EXISTING BROKEN FRAMES AND LIDS SHALL BE REMOVED AND DISPOSED OF BY THE CONTRACTOR AND SHALL BE REPLACED AS DIRECTED BY THE ENGINEER. REPLACEMENT FRAMES AND LIDS WILL BE PAID FOR IN ACCORDANCE WITH ARTICLE 109.04 OF THE STANDARD SPECIFICATIONS UNLESS A SEPARATE PAY ITEM HAS BEEN PROVIDED.

IF THE EXISTING LIDS ARE OPEN, THE FRAME WILL BE ADJUSTED TO THE ELEVATION OF THE MILLED PAVEMENT SURFACE PRIOR TO THE MILLING OPERATION. THE FRAME WILL NOT BE REMOVED AND COVERED BY THE METAL PLATE.

CITY OF CHICAGO CASTINGS ARE THE PROPERTY OF THE CITY AND THE CONTRACTOR SHALL NOTIFY THE CITY FOR REMOVAL AND DISPOSITION OF THE CASTINGS.

THE METAL PLATE USED TO COVER THE STRUCTURE SHALL REMAIN THE PROPERTY OF THE CONTRACTOR.

WHEN STRUCTURES ARE TO BE ADJUSTED OR RECONSTRUCTED, THE LOWERING AND RAISING OF THE FRAMES AND LIDS WILL NOT BE PAID FOR SEPARATELY BUT WILL BE INCLUDED IN THE COST OF THE CORRESPONDING PAY ITEM.

DETAILS FOR FRAMES AND LIDS ADJUSTMENT WITH MILLING

ALL DIMENSIONS ARE IN INCHES (MILLIMETERS) UNLESS OTHERWISE SHOWN

REVISIONS		ILLINOIS DEPARTMENT OF TRANSPORTATION			
NAME	DATE	DETAILS FOR FRAMES AND LIDS ADJUSTMENT WITH MILLING			
R. SHAH	10/25/94	SCALE: VERT. NONE HORIZ. _____ DRAWN BY _____ CHECKED BY _____			
R. SHAH	01/30/95				
R. SHAH	03/10/95				
A. ABBAS	03/21/97				
R. WIEDEMAN	05/14/04				
R. BORO	01/01/07				
R. BORO	03/09/11				
R. BORO	12/06/11				

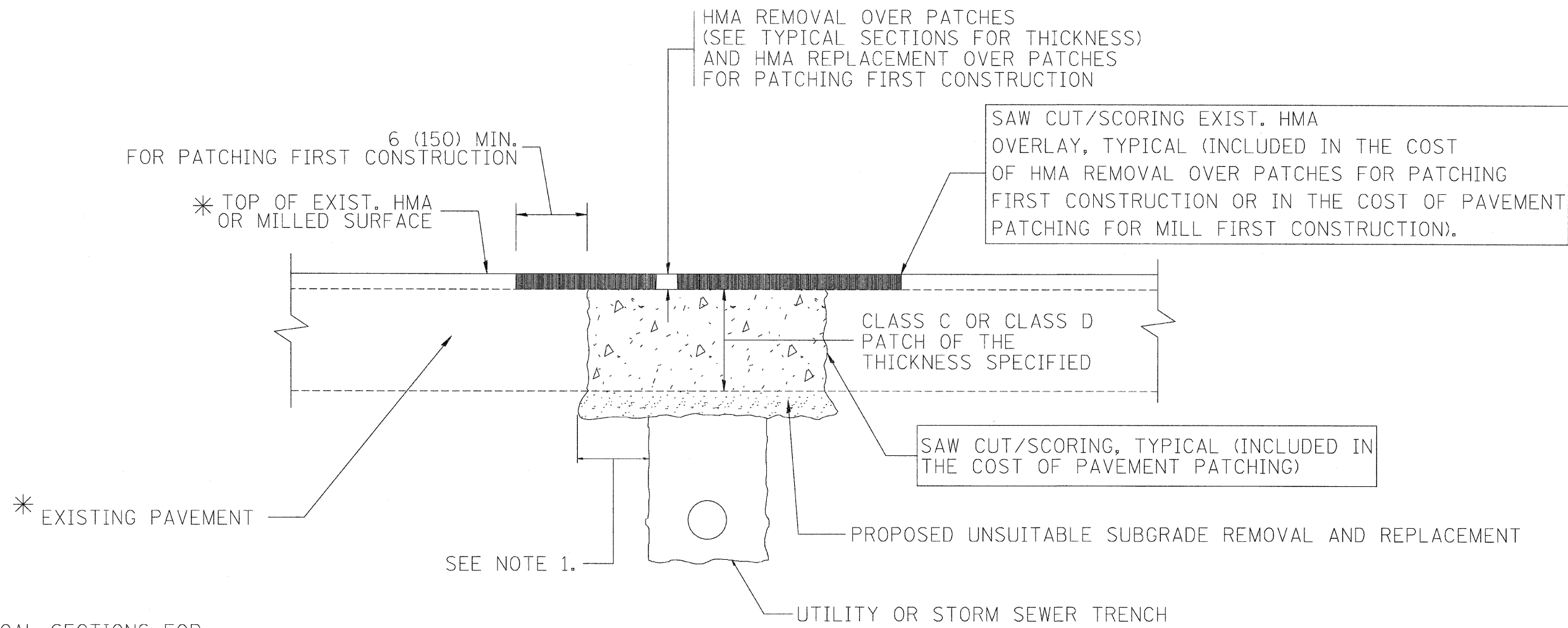
FILE NAME = 11427-DTIS-03-BD08 - BD-08	USER NAME = geglienobt	DESIGNED — R. SHAH	REVISED — R. SHAH 03-10-95
		CHECKED —	REVISED — A. ABBAS 03-21-97
	PLOT SCALE = 50.0000' / IN.	DRAWN —	REVISED — R. WIEDEMAN 05-14-04
	PLOT DATE = 1/4/2008	CHECKED — 10-25-94	REVISED — R. BORO 01-01-07

**STATE OF ILLINOIS
DEPARTMENT OF TRANSPORTATION**

**DETAILS FOR
FRAMES AND LIDS ADJUSTMENT WITH MILLING**

SCALE: SHEET NO. 8 OF 10 SHEETS STA. N/A TO STA. N/A

FAU RTE.	SECTION	COUNTY	TOTAL SHEETS	SHEET NO.
1072	11-00054-00-RS	COOK	10	8
BD00-03 (BD-8)			CONTRACT NO. 63679	
FED. ROAD DIST. NO. 1 ILLINOIS FED. AID PROJECT M-9003(906)				



* SEE TYPICAL SECTIONS FOR THICKNESS AND MATERIALS

NOTES:

1. THE WIDTH OF THE FULL DEPTH PATCH OVER A TRENCH SHALL BE 12 (300) WIDER ON EACH SIDE OF THE TRENCH.
2. FOR METHOD OF MEASUREMENT AND BASIS OF PAYMENT, SEE RECURRING SPECIAL PROVISION "PATCHING WITH HOT-MIX ASPHALT OVERLAY REMOVAL".

SEQUENCE OF CONSTRUCTION (PATCHING FIRST)

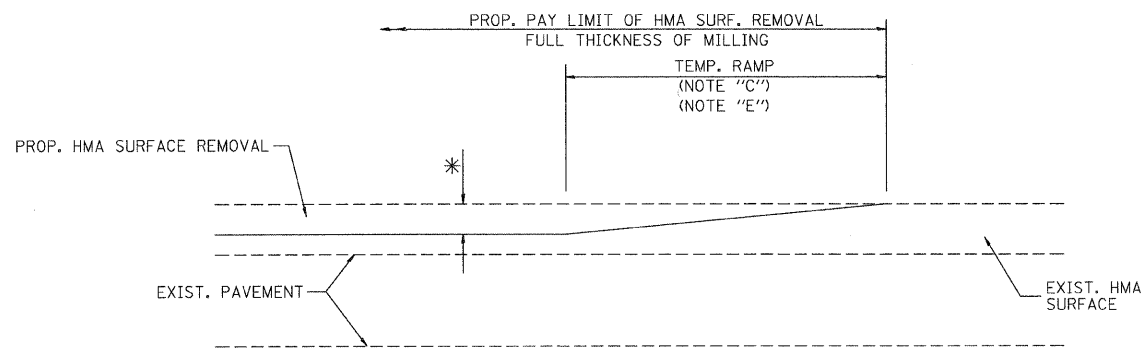
1. REMOVE THE EXISTING HMA MATERIAL OVER THE AREA TO BE PATCHED.
2. REMOVE AND REPLACE WITH CLASS C OR D PATCH.
3. REPLACE HMA MATERIAL OVER THE AREA TO BE PATCHED.

SEQUENCE OF CONSTRUCTION (MILLING FIRST)

1. MILL HMA FIRST IF THERE IS AT LEAST 4 1/2 INCHES OR MORE OF HMA MATERIAL ON TOP OF THE EXISTING PAVEMENT OR IF THE PAVEMENT IS FULL DEPTH HMA. A MINIMUM OF 2 INCHES OF HMA MATERIAL SHALL BE IN PLACE AFTER MILLING.
2. REMOVE AND REPLACE WITH FULL DEPTH CLASS D PATCHES TO TOP OF MILLED SURFACE.

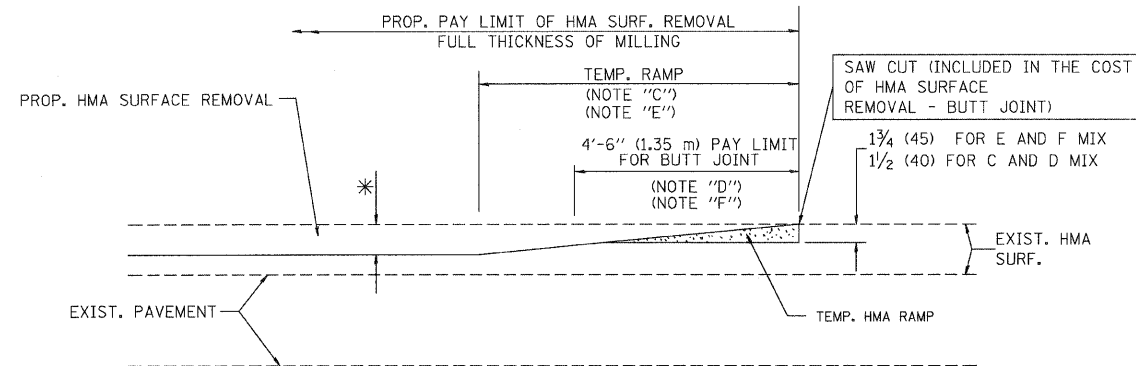
ALL DIMENSIONS ARE IN INCHES (MILLIMETERS) UNLESS OTHERWISE SHOWN.

FILE NAME = 11427-DTLS-02-BD22 - BD-22	USER NAME = bauerdl	DESIGNED - R. SHAH	REVISED - A. ABBAS 04-27-98	STATE OF ILLINOIS DEPARTMENT OF TRANSPORTATION	PAVEMENT PATCHING FOR HMA SURFACED PAVEMENT	F.A.U. RTE.	SECTION	COUNTY	TOTAL SHEETS	SHEET NO.	
		CHECKED -	REVISED - R. BORO 01-01-07			1072	11-00054-00-RS	COOK	10	9	
		PLOT SCALE = 50.000' / 1"	REVISED - R. BORO 09-04-07			BD400-04 (BD-22)		CONTRACT NO. 63679			
		PLOT DATE = 10/27/2008	REVISED - K. ENG 10-27-08			SCALE:	SHEET NO. 9 OF 10 SHEETS	STA.	TO STA.	FED. ROAD DIST. NO. 1	ILLINOIS



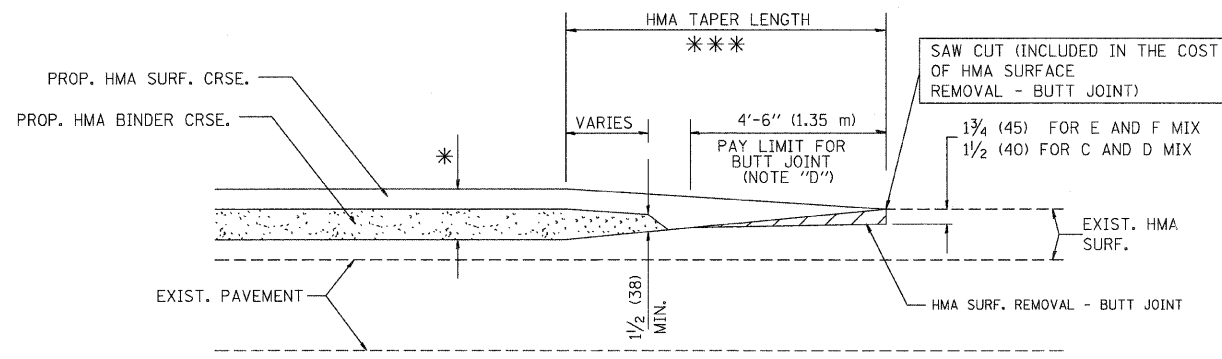
MILLED TEMPORARY RAMP
(FOR BUTT JOINT AND HMA TAPER SEE DETAIL BELOW)

OPTION 1

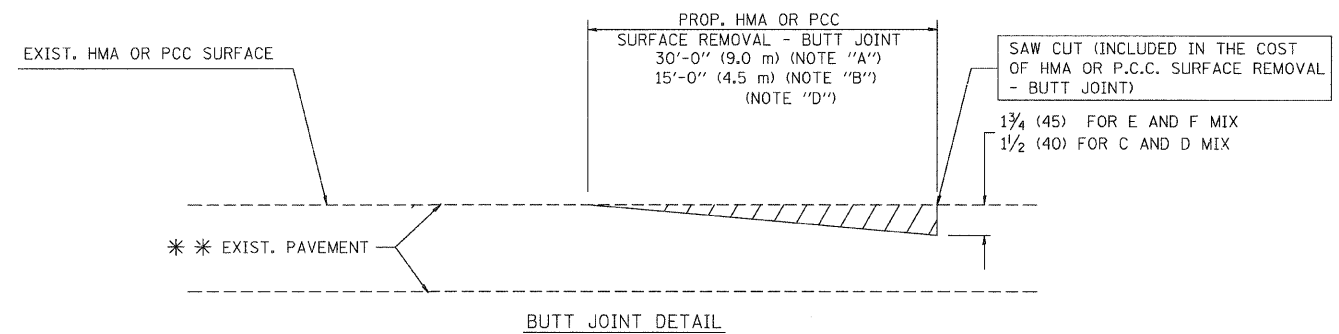


HMA CONSTRUCTED TEMPORARY RAMP
(FOR BUTT JOINT AND HMA TAPER SEE DETAIL BELOW)

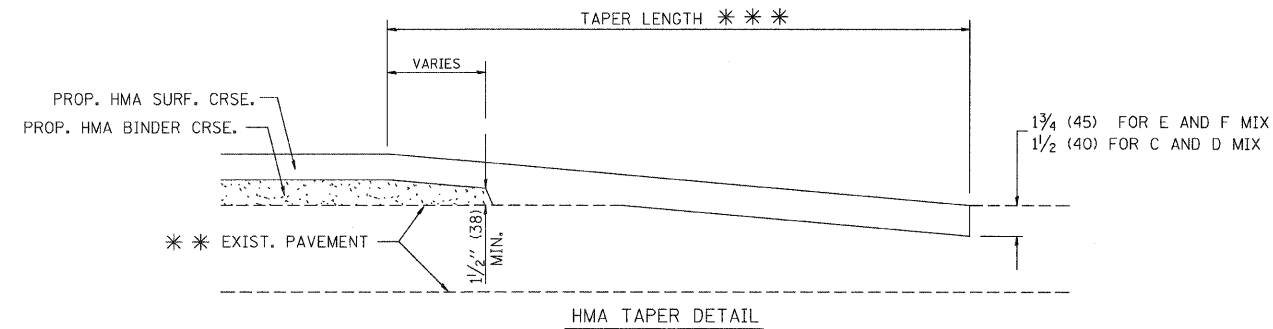
OPTION 2
TYPICAL TEMPORARY RAMP



BUTT JOINT AND HMA TAPER
TYPICAL BUTT JOINT AND HMA TAPER
FOR MILLING AND RESURFACING



BUTT JOINT DETAIL



HMA TAPER DETAIL

TYPICAL BUTT JOINT AND HMA TAPER
FOR RESURFACING ONLY

*** PC CONCRETE, HMA OR HMA RESURFACED PAVEMENT.

NOTES

- A: MAINLINE ROADWAYS AND MAJOR SIDE ROADS.
 - B: MINOR SIDE ROADS.
 - C: THE TEMP. RAMP SHALL BE CONSTRUCTED IMMEDIATELY UPON REMOVAL OF THE EXISTING HMA SURFACE.
 - D: THE BUTT JOINT SHALL BE CONSTRUCTED IMMEDIATELY PRIOR TO PLACING THE PROPOSED HMA COURSES.
 - E: TAPER THE TEMP. RAMP AT A RATE OF 3'-0" (900 mm) PER 1 INCH (25 mm) OF MILLING THICKNESS.
 - F: INSTALLATION AND REMOVAL OF THE 4'-6" (1.35 m) TEMP. RAMP IS INCLUDED IN COST OF HMA SURFACE REMOVAL - BUTT JOINT
 - G: SEE ARTICLE 406.08 AND 406.14 OF THE STANDARD SPECIFICATIONS FOR "HMA AND/OR PCC SURFACE REMOVAL, BUTT JOINT".
- * SEE TYPICAL SECTIONS FOR MILLING THICKNESS.
- *** 20'-0" (6.1 m) PER 1 (25) RESURFACING (NOTE "A")
10'-0" (3.0 m) PER 1 (25) RESURFACING (NOTE "B")

BASIS OF PAYMENT:

THE BUTT JOINT WILL BE PAID FOR AT THE CONTRACT UNIT PRICE PER SQUARE YARD (SQUARE METER) FOR "HOT-MIX ASPHALT SURFACE REMOVAL - BUTT JOINT" OR FOR "PORTLAND CEMENT CONCRETE SURFACE REMOVAL - BUTT JOINT".

ALL DIMENSIONS ARE IN INCHES (MILLIMETERS) UNLESS OTHERWISE SHOWN.

FILE NAME = 11427-D1LS-01-BD32 - BD-32	USER NAME = ggglanobt	DESIGNED -- M. DE YONG	REVISED -- R. SHAH 10-25-94
		CHECKED --	REVISED -- A. ABBAS 03-21-97
	PLOT SCALE = 50,000' / IN.	DRAWN --	REVISED -- M. GOMEZ 04-06-01
	PLOT DATE = 1/4/2008	CHECKED -- 06-13-90	REVISED -- R. BORO 01-01-07

STATE OF ILLINOIS
DEPARTMENT OF TRANSPORTATION

SCALE:		SHEET NO. 10 OF 10 SHEETS		STA. TO STA.	
		BUTT JOINT AND HMA TAPER DETAILS			

F.A.U. RTE.	SECTION	COUNTY	TOTAL SHEETS	SHEET NO.
1072	11-00054-00-RS	COOK	10	10
BD400-05 BD32			CONTRACT NO. 63679	
FED. ROAD DIST. NO. 1 ILLINOIS FED. AID PROJECT M-9003(906)				