

DATE	
BY	
REVISIONS	
PLAN	
NOTE BOOK	
NO.	

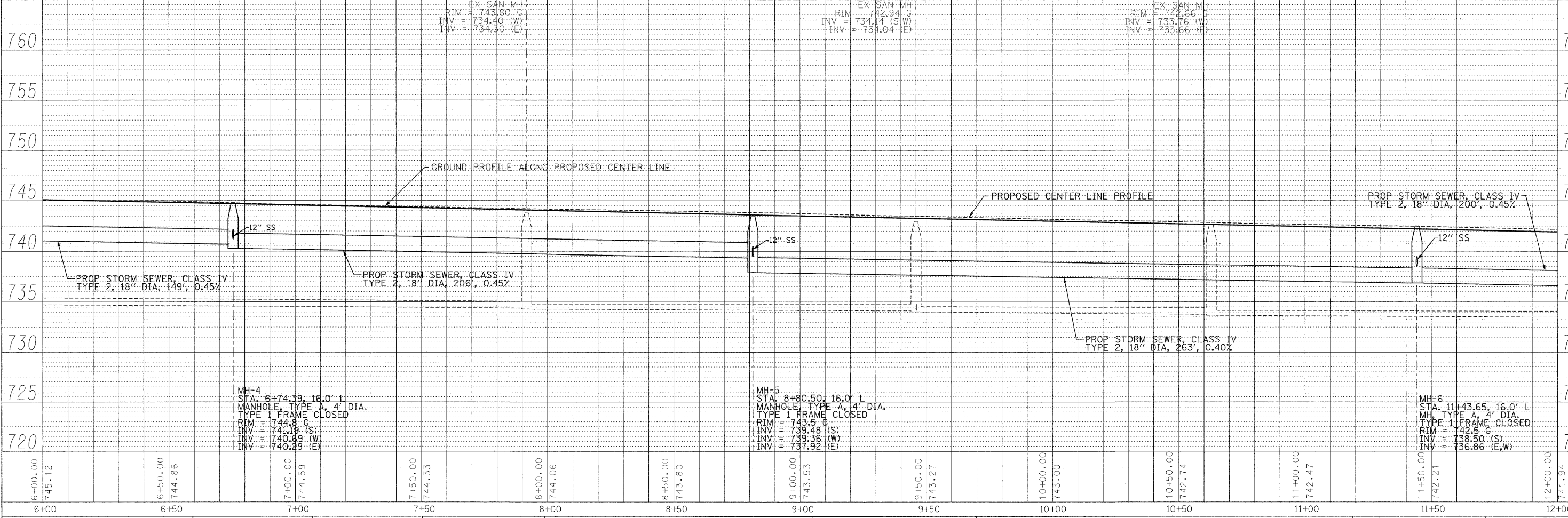
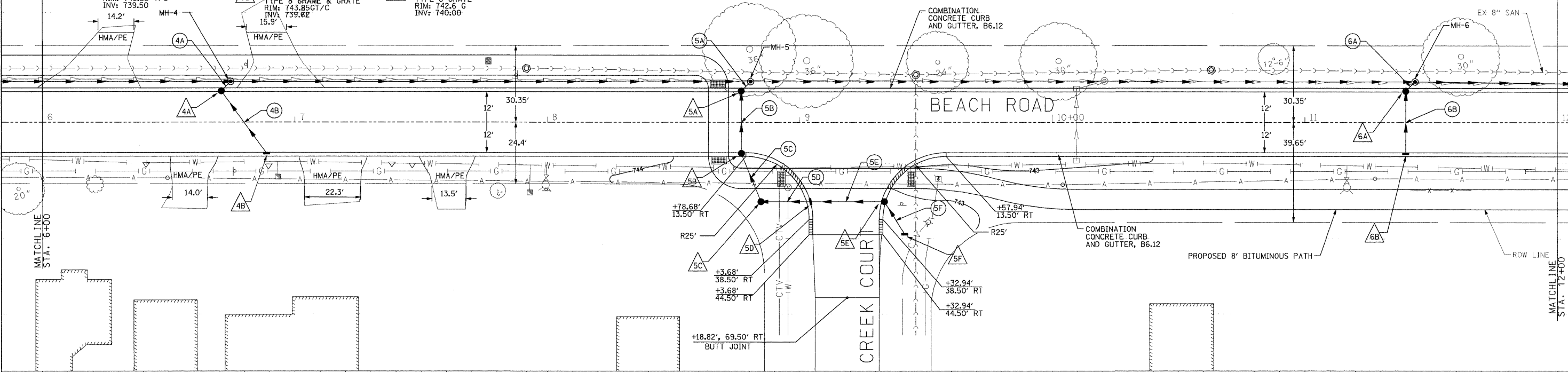
DATE	
BY	
REVISIONS	
PROFILE	
NOTE BOOK	
NO.	

- 4A STA. 6+70.80, 13.0' L CB, TYPE A, 4' DIA. TYPE 3 FRAME & GRATE RIM: 745.00 T/C INV: 741.22
- 4B STA. 6+88.76, 13.0' R INLET, TYPE A, TYPE 3 FRAME & GRATE RIM: 744.80 T/C INV: 741.36
- 5A STA. 8+76.34, 13.0' L CB, TYPE A, 4' DIA. TYPE 3 FRAME & GRATE RIM: 743.85 T/C INV: 739.50
- 5B STA. 8+76.34, 13.0' R CB, TYPE A, 4' DIA. TYPE 3 FRAME & GRATE RIM: 743.85 T/C INV: 739.62
- 5D STA. 9+03.18, 31.4' R INLET, TYPE A, TYPE 3 FRAME & GRATE RIM: 743.50 T/C INV: 739.80
- 5E STA. 9+37.24, 31.4' R CB, TYPE A, 4' DIA. TYPE 3 FRAME & GRATE RIM: 743.20 T/C INV: 739.93
- 5F STA. 9+41.58, 44.3' R INLET, TYPE A, TYPE 8 GRATE RIM: 742.6 G INV: 740.00
- 6A STA. 11+39.95, 13.0' L CB, TYPE A, 4' DIA. TYPE 3 FRAME & GRATE RIM: 742.50 T/C INV: 738.50
- 6B STA. 11+39.95, 13.0' R INLET, TYPE A, TYPE 3 FRAME & GRATE RIM: 742.50 T/C INV: 738.62

LEGEND

○ DETECTABLE WARNING

- 4A PROP STORM SEWER, CLASS IV TYPE 2, 12" DIA, 5', 0.60%
- 4B PROP STORM SEWER, CLASS IV TYPE 2, 12" DIA, 32', 0.45%
- 5A PROP STORM SEWER, CLASS IV TYPE 2, 12" DIA, 5', 0.45%
- 5B PROP STORM SEWER, CLASS IV TYPE 2, 12" DIA, 26', 0.45%
- 5C PROP STORM SEWER, CLASS IV TYPE 2, 12" DIA, 20', 0.45%
- 5D PROP STORM SEWER, CLASS IV TYPE 2, 12" DIA, 19', 0.45%
- 5E PROP STORM SEWER, CLASS IV TYPE 2, 12" DIA, 30', 0.45%
- 5F PROP STORM SEWER, CLASS IV TYPE 2, 12" DIA, 15', 0.45%
- 6A PROP STORM SEWER, CLASS IV TYPE 2, 12" DIA, 5', 0.45%
- 6B PROP STORM SEWER, CLASS IV TYPE 2, 12" DIA, 26', 0.45%



RHMG JOB NO 21108030	DESIGNED - CMP DRAWN - NAT CHECKED - BWM DATE - 12/7/11	REVISED - 2/6/12 REVISED - 2/22/12 REVISED - REVISED -	RHMG REZEK, HENRY, MEISENHEIMER, and GENDE, INC. CONSULTING ENGINEERS 976 CAMPUS DRIVE MUNDELEIN, ILLINOIS 60060 847-382-9999 www.rhmg.com info@rhmg.com	VILLAGE OF BEACH PARK BEACH ROAD BEACH PARK, ILLINOIS 535 TOLLWAY RD. SUITE F ELGIN, ILLINOIS 60123 847-742-9999	PLAN AND PROFILE V: 1"=5' SCALE: H: 1"=20' SHEET NO. 16 OF 47 SHEETS STA. 6+00 TO STA. 12+00	F.A. RTE. 1210 SECTION 11-00012-00-PV COUNTY LAKE TOTAL SHEETS 47 SHEET NO. 16 CONTRACT NO. 63683 FED. ROAD DIST. NO. ILLINOIS FED. AID PROJECT
----------------------	--	---	--	--	---	---