

F.A.U. ROUTE NO.	SECTION	COUNTY	TOTAL SHEETS	SHEET NO.
1063	11-00134-00-RS	COOK	14	1
FED. ROAD DIST. NO. 1	ILLINOIS	CONTRACT NO. 63687		

**STATE OF ILLINOIS
DEPARTMENT OF TRANSPORTATION
DIVISION OF HIGHWAYS**

**PLANS FOR PROPOSED
FEDERAL AID PROJECT**

**FAU 1063 (WILLOW ROAD)
HARWOOD AVENUE (FAU 2845)
TO RIEGEL ROAD (FAU 2860)
RESURFACING**

**SECTION : 11-00134-00-RS
PROJECT NO.: M-9003(784)
VILLAGE OF HOMEWOOD
COOK COUNTY
JOB NO.: C-91-380-11**

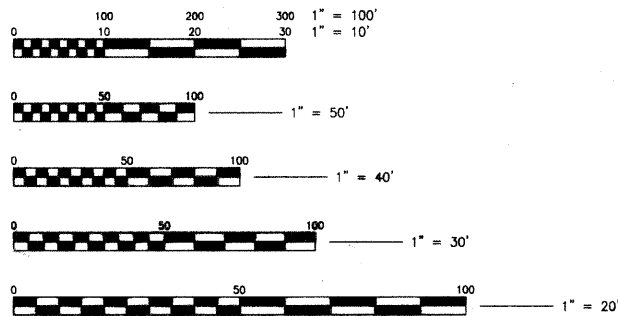
INDEX OF SHEETS

- | SHEET NO. | TITLE |
|-----------|--|
| 1 | COVER SHEET, INDEX & LOCATION MAP |
| 2 | GENERAL NOTES |
| 3 | SUMMARY OF QUANTITIES |
| 4 | EXISTING TYPICAL SECTIONS |
| 5 | PROPOSED TYPICAL SECTIONS |
| 6-7 | WILLOW ROAD (FAU ROUTE 1063) EXISTING ROADWAY AND PAVEMENT MARKING PLAN, STA. 0+00 STA. 52+22.47 |
| 8 | IDOT DISTRICT ONE TYPICAL PAVEMENT MARKING DETAIL |
| 9 | IDOT BUTT JOINT & HMA TAPER DETAIL |
| 10 | CURB OR GUTTER REMOVAL AND REPLACEMENT |
| 11 | TC-10 TRAFFIC CONTROL AND PROTECTION FOR SIDE ROADS, INTERSECTIONS, AND DRIVEWAYS |
| 12 | DETAILS FOR FRAMES AND LIDS ADJUSTMENT WITH MILLING |
| 13 | PAVEMENT PATCHING FOR HMA SURFACED PAVEMENT |
| 14 | IDOT DISTRICT 1 DETECTABLE LOOP INSTALLATION DETAILS |

HIGHWAY STANDARDS

- | STANDARD NO. | TITLE |
|--------------|---|
| 000001-06 | STANDARD SYMBOLS, ABBREVIATIONS AND PATTERNS |
| 424001-06 | PERPENDICULAR CURB RAMPS |
| 424016-00 | MID BLOCK CURB RAMP |
| 442201-03 | CLASS C AND D PATCHES |
| 604001-03 | FRAMES AND LIDS, TYPE 1 |
| 606001-04 | CONCRETE CURB TYPE-B AND COMBINATION CONCRETE CURB & GUTTER |
| 701501-06 | URBAN LANE CLOSURE, 2L, 2W UNDMDED |
| 701801-05 | LANE CLOSURE MULTILANE 1W OR 2W CROSSWALK OR SIDEWALK CLOSURE |
| 701901-02 | TRAFFIC CONTROL DEVICES |

PROGRAM AND OFFICE ENGINEER: CHARLES F. RIDDLE, P.E. (847)705-4406 SCHAUMBURG, ILLINOIS



FULL SIZE PLANS HAVE BEEN PREPARED USING STANDARD ENGINEERING SCALES. REDUCED SIZED PLANS WILL NOT CONFORM TO STANDARD SCALES. IN MAKING MEASUREMENTS ON REDUCED SIZE PLANS, THE ABOVE SCALES SHALL BE USED.

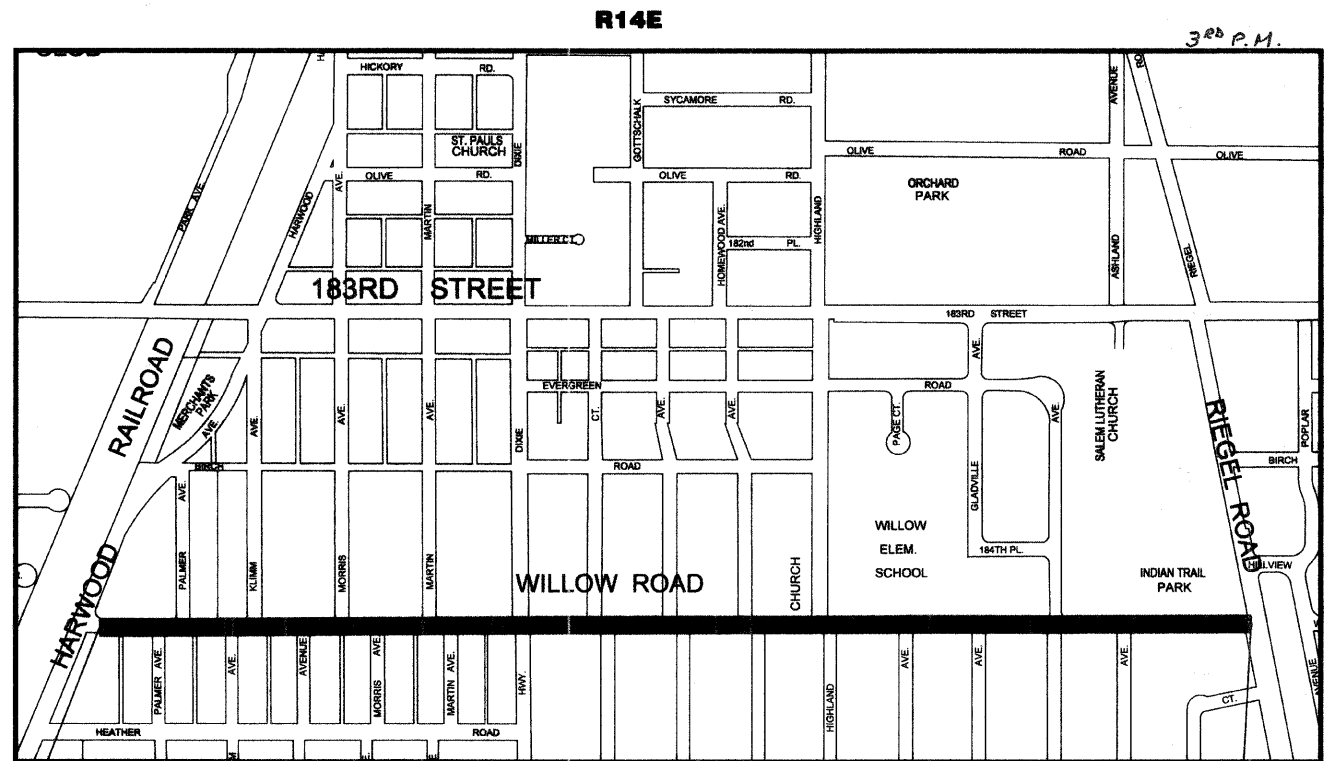
WILLOW ROAD DESIGN DESIGNATION
POSTED SPEED: 25 MPH
ADT: 1,426 (2009)
URBAN COLLECTOR

PROJECT IS LOCATED IN THE VILLAGE OF HOMEWOOD



CALL JULIE (800) 892-0123
WITH THE FOLLOWING INFORMATION:
COUNTY = COOK
48 HOURS BEFORE YOU DIG
EXCLUDING SAT., SUN. & HOLIDAYS

CONTRACT NO.: 63687



PROJECT BEGINS
START STA. 0+00

PROJECT ENDS
STA. 52+22.47

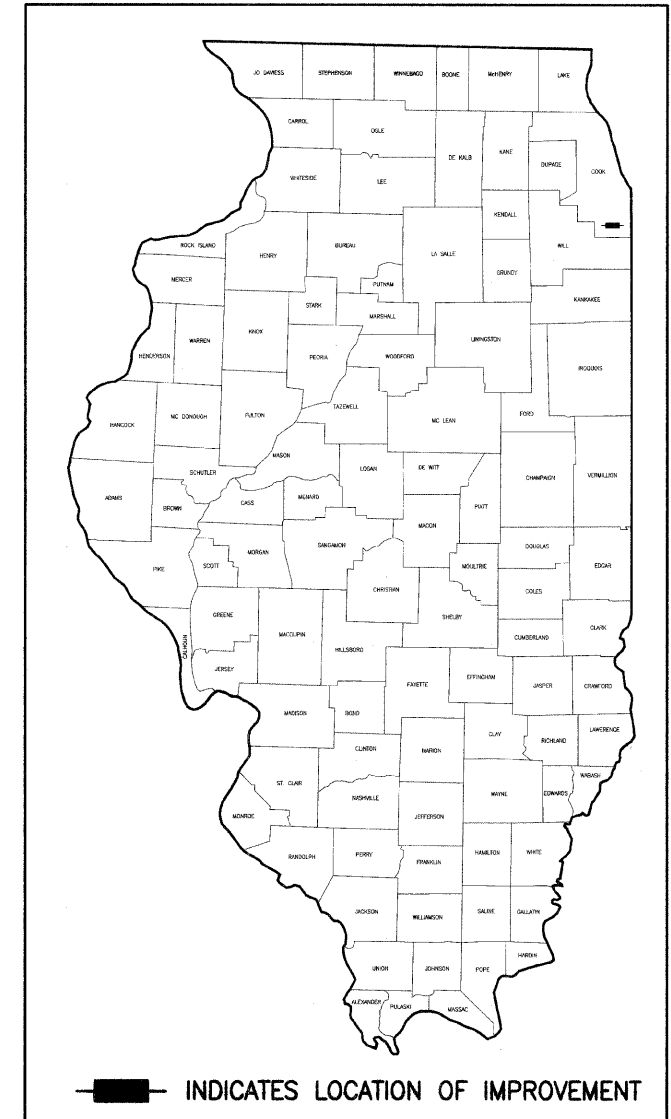
3RD PRINCIPAL MERIDIAN

LOCATION MAP
NOT TO SCALE

GROSS LENGTH OF PROJECT = 5,222 LINEAL FEET (0.989 MILES)
NET LENGTH OF PROJECT = 5,149 LINEAL FEET (0.975 MILES)



VILLAGE OF HOMEWOOD
Department of Public Works
Engineering Division
17755 S. Ashland Avenue
Homewood, IL 60445
(708) 206-3470



INDICATES LOCATION OF IMPROVEMENT



VILLAGE ENGINEER
" LICENSE EXPIRES 11-30-13 " DATE: 2-3-12

STATE OF ILLINOIS DEPARTMENT OF TRANSPORTATION DIVISION OF HIGHWAYS	
APPROVED	Feb. 3 2012 <i>John D. Gattiged</i> VILLAGE PRESIDENT
PASSED	FEBRUARY 14 2012 <i>C.J. Holt</i> DISTRICT ENGINEER OF LOCAL ROADS & STREETS
RELEASING FOR BID BASED ON LIMITED REVIEW	FEBRUARY 14 2012 <i>Diana M. O'Keefe</i> DEPUTY DIRECTOR OF HIGHWAYS, REGION 1 ENGINEER

PRINTED BY THE AUTHORITY OF
THE STATE OF ILLINOIS