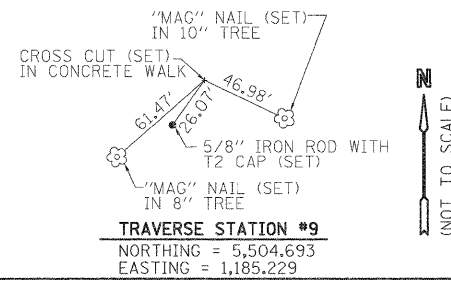
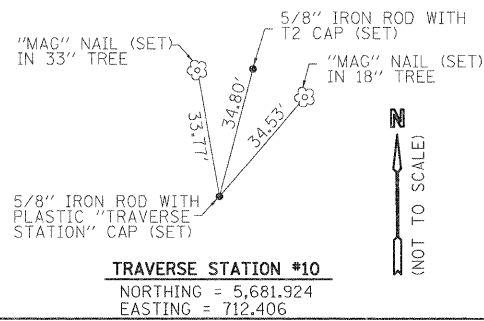
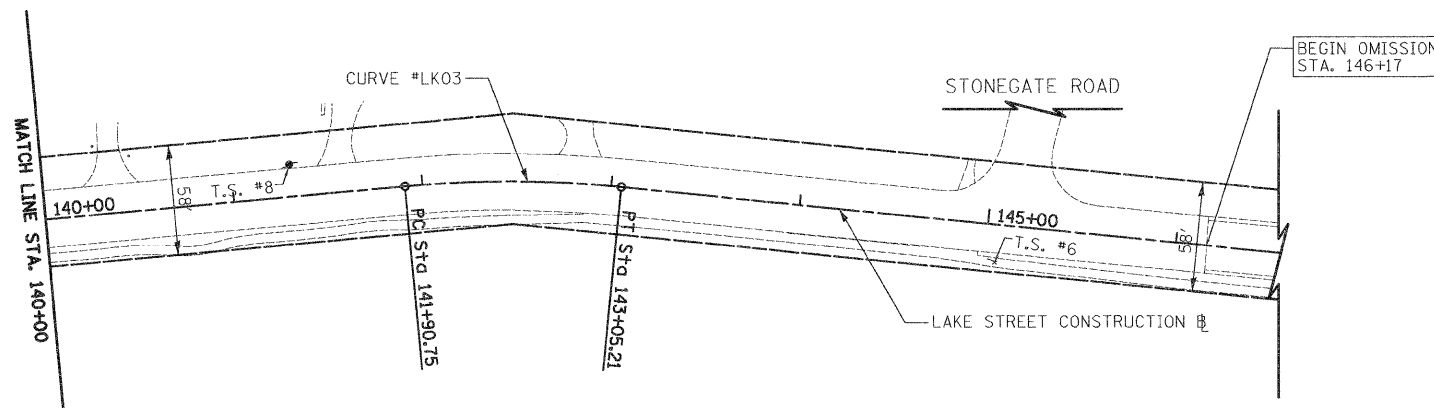


PROP. CURVE LK04
 PI STA. = 134+50.94
 $\Delta = 2^\circ 56' 59''$ (RT)
 $D = 2^\circ 51' 53''$
 $R = 2,000.00'$
 $T = 51.50'$
 $L = 102.96'$
 $E = 0.66'$
 $e = N/A$
 P.C. STA. = 133+99.44
 P.T. STA. = 135+02.41

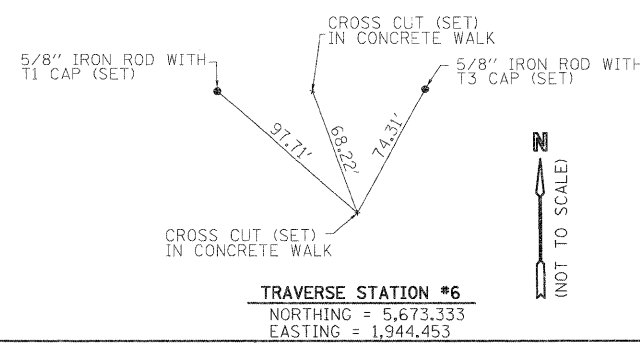
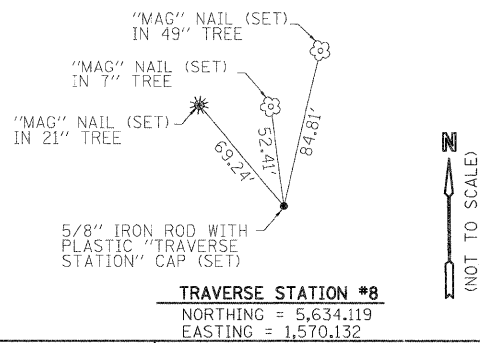
PROP. CURVE LK02
 PI STA. = 138+02.29
 $\Delta = 36^\circ 15' 42''$ (LT)
 $D = 14^\circ 19' 26''$
 $R = 400.00'$
 $T = 130.98'$
 $L = 253.16'$
 $E = 20.90'$
 $e = N/A$
 P.C. STA. = 136+71.31
 P.T. STA. = 139+24.47



LAKE STREET



PROP. CURVE LK03
 PI STA. = 142+48.16
 $\Delta = 10^\circ 55' 47''$ (RT)
 $D = 9^\circ 32' 57''$
 $R = 600.00'$
 $T = 57.40'$
 $L = 114.45'$
 $E = 2.74'$
 $e = N/A$
 P.C. STA. = 141+90.75
 P.T. STA. = 143+05.21



LAKE STREET

FILE NAME =	USER NAME = eds	DESIGNED - EDS	REVISED -	STATE OF ILLINOIS DEPARTMENT OF TRANSPORTATION	ALIGNMENT, TIES, BENCHMARKS AND ROW			F.A.U. RTE. 1236	SECTION 08-00100-00-PV	COUNTY LAKE	TOTAL SHEETS 35	SHEET NO. 10			
... \Cad\sheet\2253_sht_	PLOT SCALE = 50.0000' / in.	DRAWN - EDS	REVISED -					CONTRACT NO. 63697							
CIVILTECH	PLOT DATE = 2/2/2012	CHECKED - DNM	REVISED -					SCALE: 1" = 50' SHEET NO. 3 OF 4 SHEETS STA. 127+00 TO STA. 146+66.28							
		DATE - 02/06/12	REVISED -					FED. ROAD DIST. NO. 7 ILLINOIS FED. AID PROJECT							