

NOTE:

ALL NEW INSTALLED WATER MAIN SHALL HAVE A TRACE WIRE, 45° BEND 12"
SEE SPECIFICATIONS

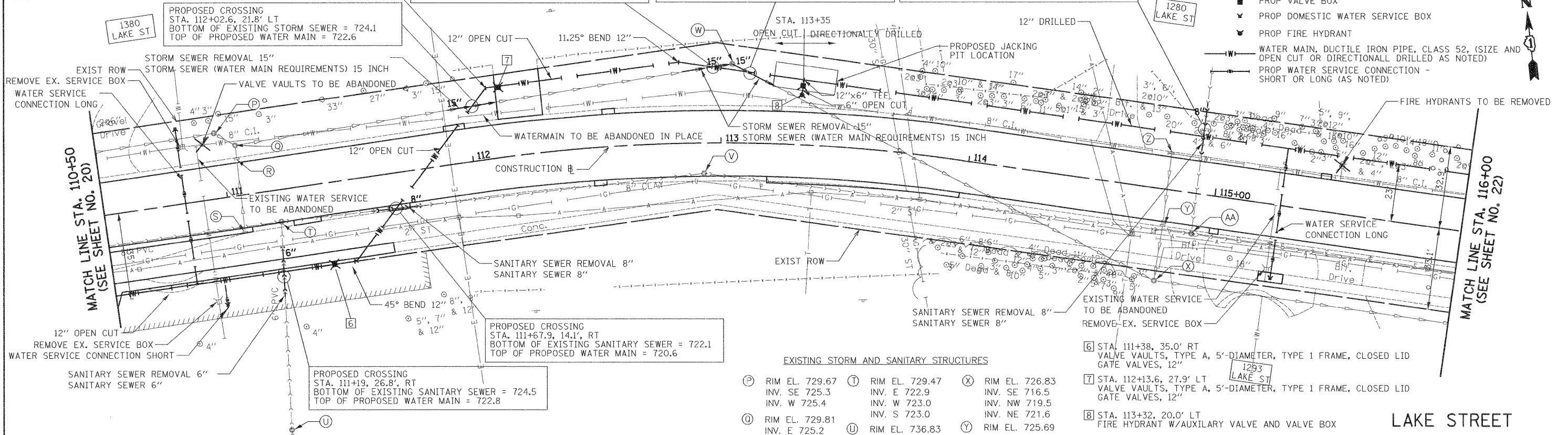
PROPOSED CROSSING
STA. 112+66.9, 26.1' LT
BOTTOM OF EXISTING STORM SEWER = 724.1
TOP OF PROPOSED WATER MAIN = 722.6

PROPOSED CROSSING
STA. 113+10.3, 27.9' LT
BOTTOM OF EXISTING STORM SEWER = 722.9
TOP OF PROPOSED WATER MAIN = 721.4

PROPOSED CROSSING
STA. 114+90.4, 30' LT
TOP OF EXISTING SANITARY SEWER = 720.0
BOTTOM OF PROPOSED WATER MAIN = 721.0

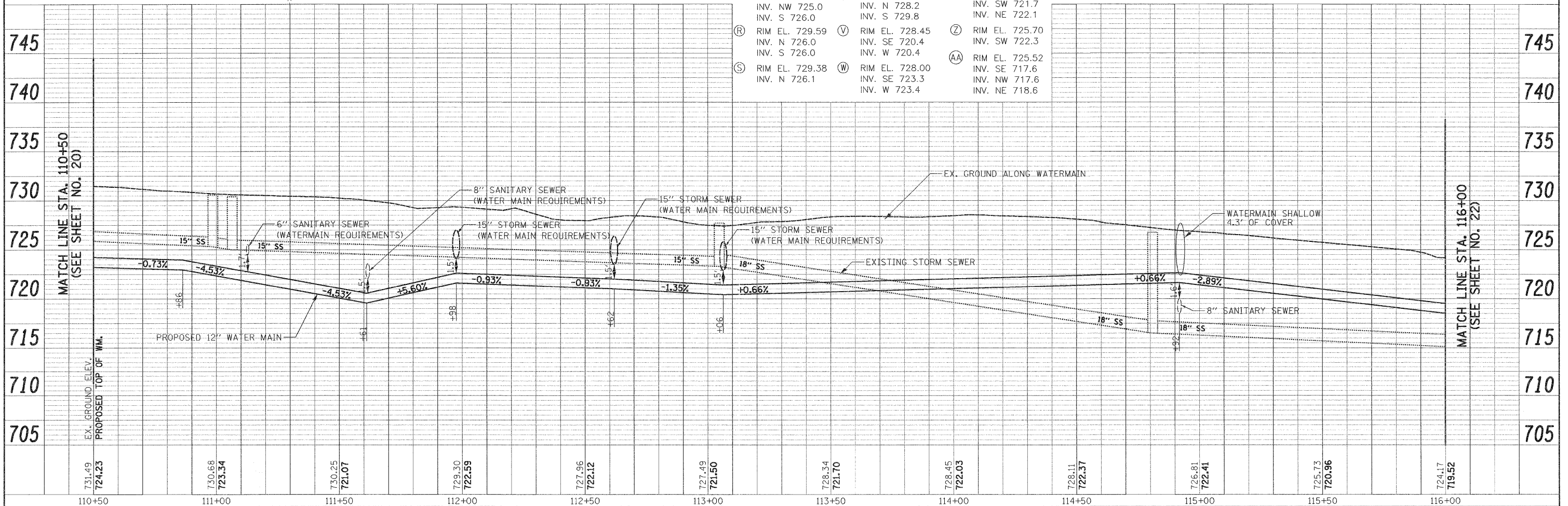
LEGEND

- ✕ PROP VALVE VAULT
- ☐ PROP VALVE BOX
- ☐ PROP DOMESTIC WATER SERVICE BOX
- ☐ PROP FIRE HYDRANT
- W — WATER MAIN, DUCTILE IRON PIPE, CLASS 52, (SIZE AND OPEN CUT OR DIRECTIONALLY DRILLED AS NOTED)
- S — PROP WATER SERVICE CONNECTION - SHORT OR LONG (AS NOTED)



EXISTING STORM AND SANITARY STRUCTURES

(P) RIM EL. 729.67 INV. SE 725.3 INV. W 725.4	(T) RIM EL. 729.47 INV. E 722.9 INV. W 723.0 INV. S 723.0	(X) RIM EL. 726.83 INV. SE 716.5 INV. NW 719.5 INV. NE 721.6	(7) STA. 112+13.6, 27.9' LT VALVE VAULTS, TYPE A, 5'-DIAMETER, TYPE 1 FRAME, CLOSED LID GATE VALVES, 12"
(O) RIM EL. 729.81 INV. E 725.2 INV. NW 725.0 INV. S 726.0	(U) RIM EL. 736.83 INV. N 728.2 INV. S 729.8	(Y) RIM EL. 725.69 INV. SW 721.7 INV. NE 722.1	(8) STA. 113+32, 20.0' LT FIRE HYDRANT W/AUXILIARY VALVE AND VALVE BOX
(R) RIM EL. 729.59 INV. N 726.0 INV. S 726.0	(V) RIM EL. 728.45 INV. SE 720.4 INV. W 720.4	(Z) RIM EL. 725.70 INV. SW 722.3	
(S) RIM EL. 729.38 INV. N 726.1	(W) RIM EL. 728.00 INV. SE 723.3 INV. W 723.4	(AA) RIM EL. 725.52 INV. SE 717.6 INV. NW 717.6 INV. NE 718.6	



PLAN	SURVEYED	DATE
NOTE BOOK	PLOTTED	BY
NO.	NO.	
	NO.	
	NO.	
	NO.	

PROFILE	SURVEYED	DATE
NOTE BOOK	PLOTTED	BY
NO.	NO.	
	NO.	
	NO.	
	NO.	