

ELEVATION

Showing Rail Post Spaces

See sheet 6 of 15 for Railing Details.

GENERAL NOTES

Excavation required to construct the pier encasement shall be included in this item. No additional compensation will be allowed for Structure Excavation.

Layout of the slope protection system may be varied to suit ground conditions in the field as directed by the Engineer.

The Contractor shall drive test piles to 110% of the nominal required bearing specified in production locations at Pier 1 or approved by the Engineer before ordering the remainder of piles.

Reinforcement bars shall conform to the requirements of ASTM A 706 Gr 60. See Special Provisions.

All proposed construction activities shall be in accordance with Regional Permits 3 and 7 of the Department of the Army authorized under Section 404 of the Clean Water Act.

The IEPA has issued Section 401 Water Quality Certification for this activity. See Special Provisions for conditions.

The top surface of the deck shall be screeded with a straight edge and then finished with a wooden hand float. Further finishing shall be delayed until the water sheen appears, but not to the point of rendering further manipulation ineffective. The surface then shall be roughened with a suitable stiff-bristled broom or wire brush drawn in transverse direction removing any laitance present and breaking up the water sheen. The corrugations formed shall be uniform in appearance and in no case more than 1/4" in depth.

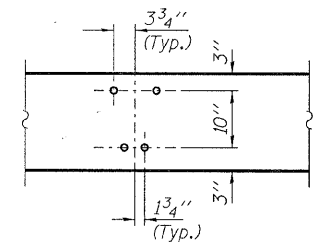
Plan dimensions and details relative to existing structure have been taken from existing plans and are subject to nominal construction variations. It shall be the Contractor's responsibility to verify such dimensions and details in the field and make necessary approved adjustments prior to construction or ordering of materials. Such variations shall not be cause for additional compensation for a change in the scope of the work, however, the Contractor will be paid for the quantity actually furnished at the unit price bid for the work.

The Contractor shall not allow any materials to be dropped into the stream during removal operations or during construction procedures. A Regional Permit from the Army Corp. of Engineers is required for any material dropped into the stream.

The existing metal shell pile coating contains lead. The Contractor shall take appropriate precautions to deal with the presence of lead on this project.

The Contractor shall excavate behind the abutments to the elevations shown prior to the removal of the existing superstructure. The excavation shall be backfilled with Porous Granular Embankment, Special after superstructure construction has been completed. The excavation required behind the abutments shall be included with Porous Granular Embankment.

All construction joints shall be bonded, except as noted. Protective Coat shall be applied to the bridge surface and fascia.



DETAIL A

TOTAL BILL OF MATERIAL

ITEM	UNIT	SUPER	SUB	TOTAL
Porous Granular Embankment (Special)	Cu. Yd.			27
Channel Excavation	Cu. Yd.			95
Stone Riprap, Class A4, Special	Ton			385
Filter Fabric	Sq. Yd.			549
Removal of Existing Structures	Each			1
Concrete Removal	Cu. Yd.		2.2	2.2
Cofferdam (Type 1) (Location-1)	Each			1
Concrete Structures	Cu. Yd.		7.2	7.2
Concrete Superstructures	Cu. Yd.	97.3	0.5	97.8
Concrete Encasement	Cu. Yd.		6.8	6.8
Bridge Deck Grooving	Sq. Yd.	193		193
Reinforcement Bars, Epoxy Coated	Pound	33,050	1,530	34,580
Steel Railing, Type S1	Foot	143		143
Furnishing Metal Shell 14" x 0.312"	Foot		135	135
Driving Piles	Foot		135	135
Test Pile Metal Shells	Each		1	1
Name Plates	Each		1	1
Protective Coat	Sq. Yd.			229

FILE NAME = 100231-shr-bridge.dgn	USER NAME =	DESIGNED - D.W.T.	REVISED -
HAMPTON, LENZINI AND RENWICK, INC. 3036 STEVENSON DRIVE, SUITE 201 SPRINGFIELD, ILLINOIS 62703		CHECKED - A.S.L.	REVISED -
ILLINOIS PROFESSIONAL DESIGN FIRM LS / PE / SE CORP. 184-000959	PLOT SCALE =	DRAWN - D.A.B.	REVISED -
	PLOT DATE = 2/2/2012	CHECKED - S.W.M.	REVISED -

**STATE OF ILLINOIS
DEPARTMENT OF TRANSPORTATION**

**GENERAL DETAILS
STRUCTURE NO. 045-3104**

SHEET NO. 2 OF 15 SHEETS

T.R.	SECTION	COUNTY	TOTAL SHEETS	SHEET NO.
193	0T-03011-01-BR	KANE	29	11
HINCKLEY ROAD		CONTRACT NO. 63699		
		[ILLINOIS] FED. AID PROJECT BROS-0089(138)		