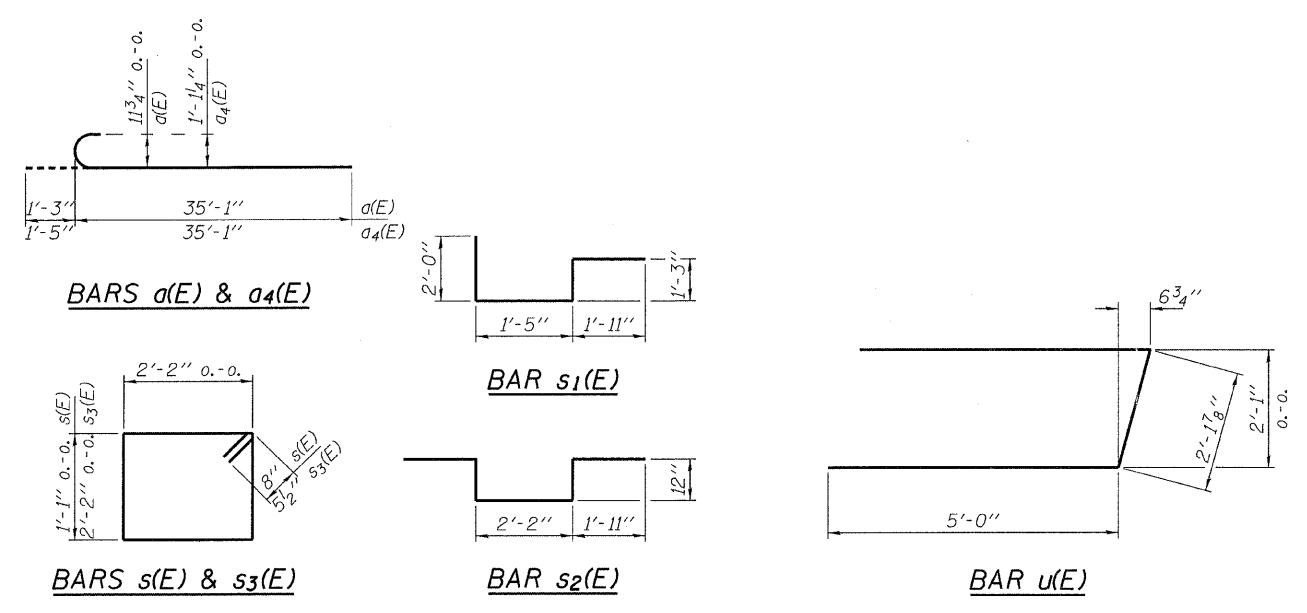


\* Order b(E) & b<sub>1</sub>(E) bars full length. Cut in field to fit skew and use remainder of bars in opposite end of deck.

PLAN



**MIN. BAR LAPS**  
 #9 = 5'-11"  
 #10 = 7'-7"

**BILL OF MATERIAL**

| BAR                              | NO. | SIZE | LENGTH  | SHAPE  |
|----------------------------------|-----|------|---------|--------|
| a(E)                             | 88  | #9   | 36'-4"  | C      |
| a <sub>1</sub> (E)               | 50  | #9   | 29'-7"  | —      |
| a <sub>2</sub> (E)               | 25  | #9   | 21'-11" | —      |
| a <sub>3</sub> (E)               | 24  | #9   | 32'-8"  | —      |
| a <sub>4</sub> (E)               | 20  | #10  | 36'-6"  | C      |
| a <sub>5</sub> (E)               | 20  | #10  | 30'-3"  | —      |
| a <sub>6</sub> (E)               | 10  | #10  | 23'-10" | —      |
| b(E)                             | 47  | #5   | 26'-8"  | —      |
| b <sub>1</sub> (E)               | 70  | #6   | 26'-8"  | —      |
| p(E)                             | 14  | #7   | 27'-7"  | —      |
| s(E)                             | 138 | #6   | 7'-10"  | □      |
| s <sub>1</sub> (E)               | 54  | #5   | 6'-7"   | ┌      |
| s <sub>2</sub> (E)               | 27  | #5   | 8'-0"   | └      |
| s <sub>3</sub> (E)               | 16  | #5   | 9'-7"   | □      |
| u(E)                             | 6   | #6   | 12'-2"  | ┌      |
| v(E)                             | 112 | #5   | 4'-0"   | —      |
| Concrete Structures              |     |      | Cu. Yd. | 7.2    |
| Concrete Superstructure          |     |      | Cu. Yd. | 97.3   |
| Bridge Deck Grooving             |     |      | Sq. Yd. | 193    |
| Concrete Encasement              |     |      | Cu. Yd. | 6.8    |
| Protective Coat                  |     |      | Sq. Yd. | 229    |
| Reinforcement Bars, Epoxy Coated |     |      | Pound   | 34,580 |
| Metal Shell 14" x 0.312"         |     |      | Foot    | 135    |
| Test Pile Metal Shells           |     |      | Each    | 1      |
| Name Plates                      |     |      | Each    | 1      |

Reinforcement bars designated (E) shall be epoxy coated. For Elevations, Sections A-A, and B-B see sheet 5 of 15. For Edge Beam Details see Detail A on sheet 5 of 15.