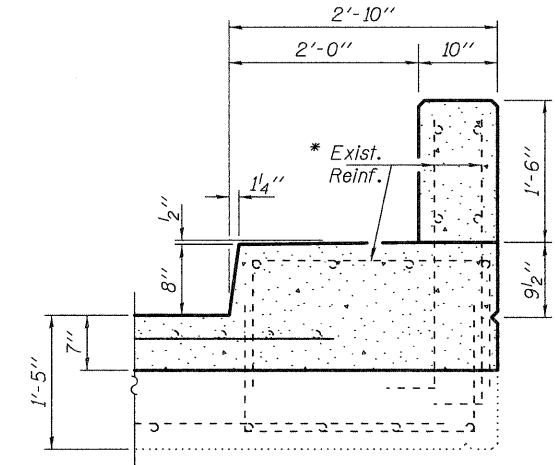


SECTION B-B
Dimensions at Rt. L's



SECTION THRU CURB & PARAPET

CONCRETE REPLACEMENT PLAN

SN: 101-0033 (NB) shown,
SN: 101-0034 (SB) similar by 180° rotation

* Existing reinforcement extending into the removal area shall be cleaned, straightened and incorporated into the new construction. Any reinforcement bars that are damaged during concrete removal shall be replaced with an approved bar splicer or anchorage system. Cost shall be included with Concrete Removal.

BILL OF MATERIAL FOR ONE STRUCTURE

Bar	No.	Size	Length	Shape
a(E)	8	#5	19'-6"	—
h(E)	16	#5	19'-6"	—
Concrete Removal			Cu. Yd.	6.9
Concrete Superstructure			Cu. Yd.	6.8
Reinforcement Bars, Epoxy Coated			Pounds	490

DESIGNED - ADY
CHECKED - MKC
DRAWN - Kyle M. Steffen
CHECKED - ADY MKC

EXAMINED *Joanne F. [Signature]* DATE - MARCH 8, 2012
ACTING ENGINEER OF STRUCTURAL SERVICES
PASSED *Carl [Signature]*
ACTING ENGINEER OF BRIDGES AND STRUCTURES

STATE OF ILLINOIS
DEPARTMENT OF TRANSPORTATION

CONCRETE REPLACEMENT DETAILS
SN 101-0033 (NB) & 0034 (SB)
SHEET NO. 3 OF 6 SHEETS

F.A. RTE.	SECTION	COUNTY	TOTAL SHEETS	SHEET NO.
738	(SBIM)	WINNEBAGO	24	15
CONTRACT NO. 64H21				
ILLINOIS FED. AID PROJECT				