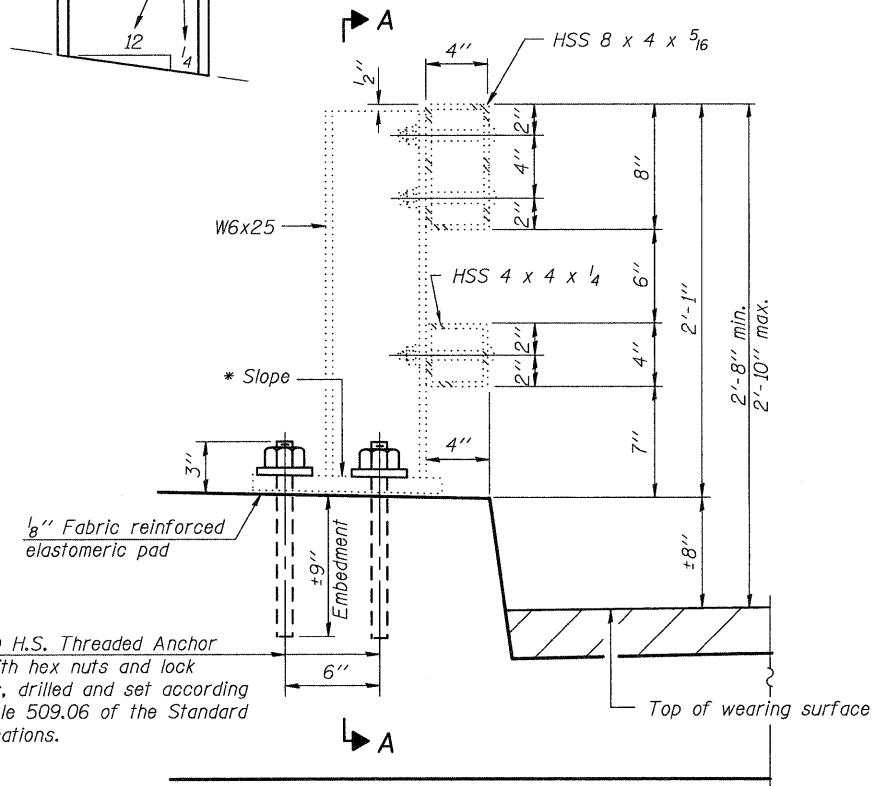
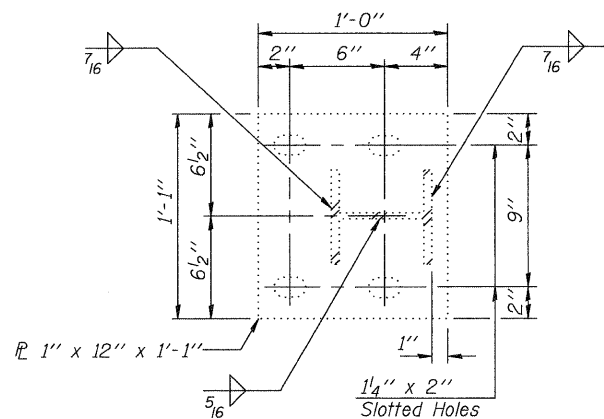


\* Cut bottom end of post to curb slope.



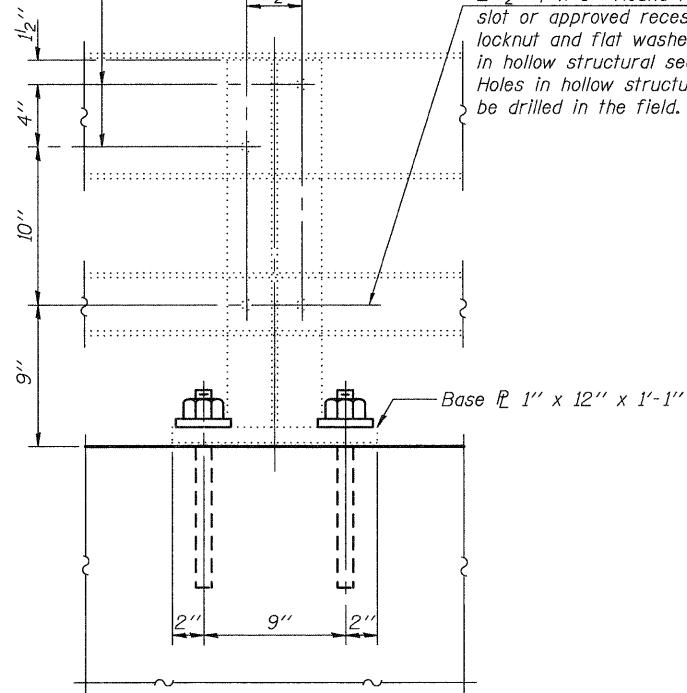
4- 1"  $\phi$  H.S. Threaded Anchor Rods with hex nuts and lock washers, drilled and set according to Article 509.06 of the Standard Specifications.

**SECTION AT RAIL POST**



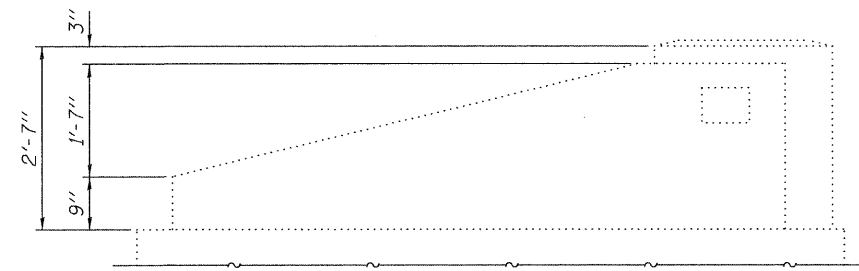
**BASE PLATE DETAIL**

2- 3/4"  $\phi$  x 6" Round Head Bolts (With slot or approved recess in head.) with locknut and flat washer. 7/8"  $\phi$  Holes in tubing and posts. Holes in hollow structural section may be drilled in the field.



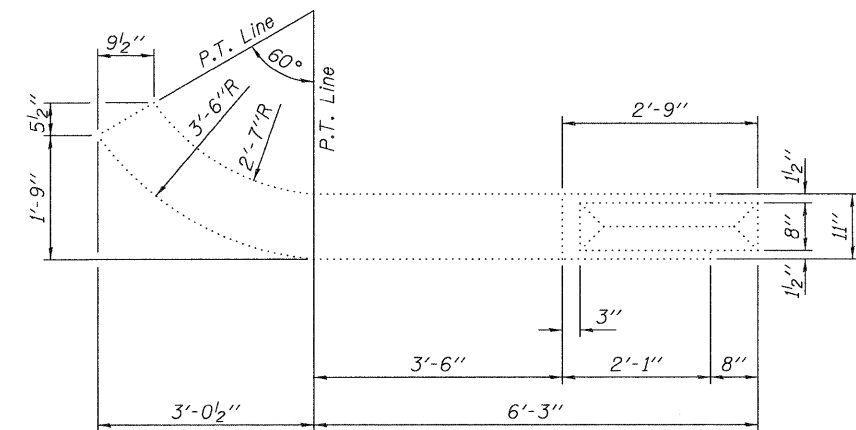
2- 1/2"  $\phi$  x 6" Round Head Bolts (With slot or approved recess in head.) with locknut and flat washer. 5/8"  $\phi$  Holes in hollow structural section and post. Holes in hollow structural section may be drilled in the field.

**SECTION A-A**



**ELEVATION - END POST**

Note:  
Rail Posts to be removed as needed at joint repair locations. Use new H.S. Threaded Anchor Rods to reinstall, as specified. Cost included with Concrete Superstructure.



**PLAN - END POST**

DESIGNED - MKC	EXAMINED - <i>Joey F. J...</i>
CHECKED - ADY	PASSED - <i>...</i>
DRAWN - Kyle M. Steffen	
CHECKED - MKC ADY	

DATE - MARCH 8, 2012	ACTING ENGINEER OF STRUCTURAL SERVICES
	ACTING ENGINEER OF BRIDGES AND STRUCTURES

**STATE OF ILLINOIS  
DEPARTMENT OF TRANSPORTATION**

**RAIL POST AND ANCHOR DEVICE DETAILS  
SN 101-0035 (NB) & 0036 (SB)**

F.A. RTE.	SECTION	COUNTY	TOTAL SHEETS	SHEET NO.
738	(5B-1)M-1	WINNEBAGO	24	18
CONTRACT NO. 64H22				
ILLINOIS FED. AID PROJECT				