


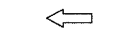
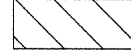




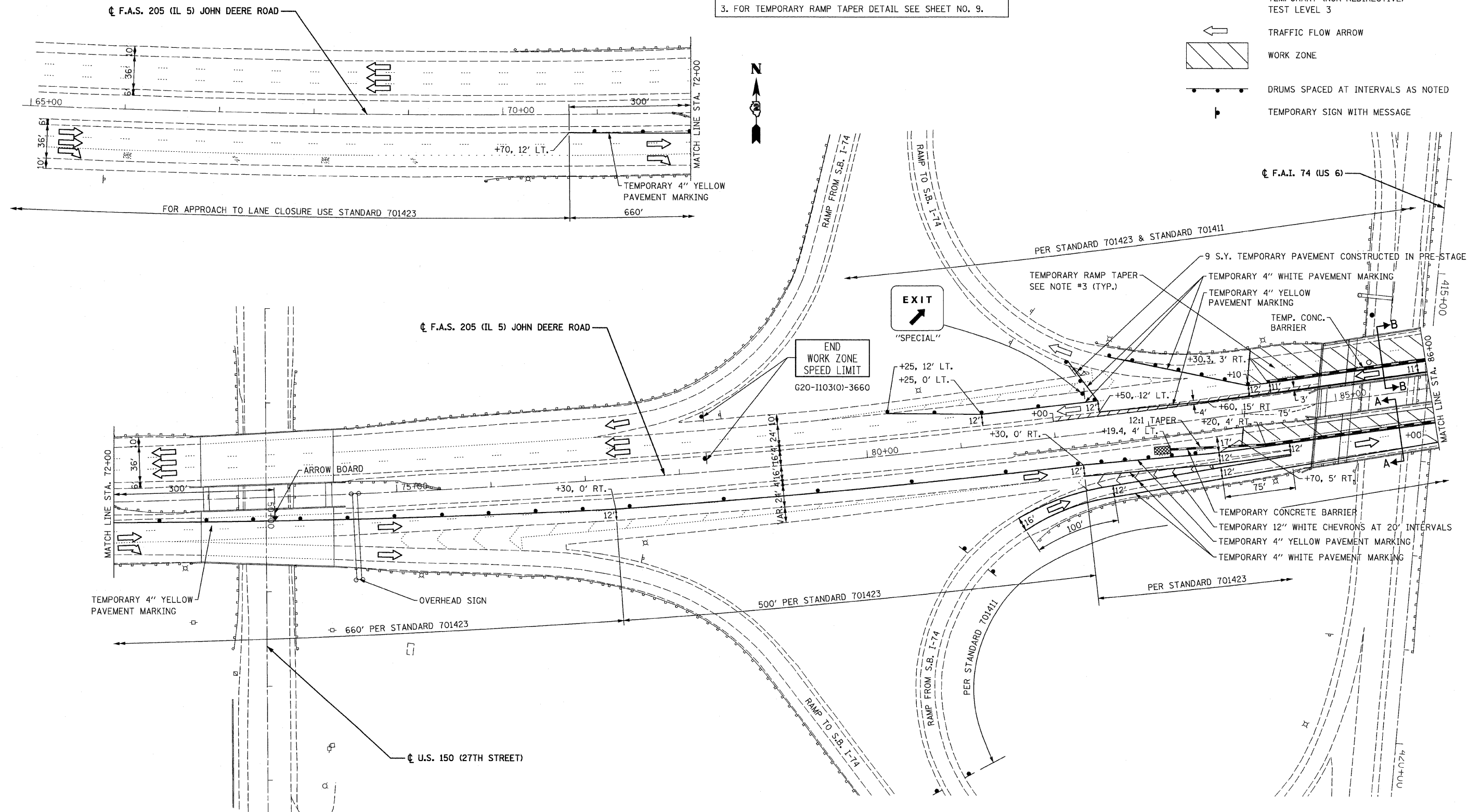
DATE	
BY	
FINAL SURVEY	
SURVEYED	
PLOTTED	
TEMPLATE	
NOTE BOOK	
AREAS CHECKED	
NO.	

DATE	
BY	
ORIGINAL SURVEY	
SURVEYED	
PLOTTED	
TEMPLATE	
NOTE BOOK	
AREAS CHECKED	
NO.	

NOTES:

- PRESTAGE WORK ON F.A.S 205 SHALL BE DONE UTILIZING STANDARD 701422, "LANE CLOSURE, MULTILANE, FOR SPEEDS ≥ 45 MPH TO 55 MPH".
- FOR SECTION A-A AND SECTION B-B SEE SHEET NO. 8.
- FOR TEMPORARY RAMP TAPER DETAIL SEE SHEET NO. 9.

- LEGEND**
-  PROPOSED HMA SURFACE REMOVAL, 2" HMA SURFACE COURSE, MIX 'C', N50, 2"
 -  TEMPORARY CONCRETE BARRIER
 -  RELOCATED IMPACT ATTENUATOR, TEMPORARY (NON-REDIRECTIVE) TEST LEVEL 3
 -  TRAFFIC FLOW ARROW
 -  WORK ZONE
 -  DRUMS SPACED AT INTERVALS AS NOTED
 -  TEMPORARY SIGN WITH MESSAGE



FILE NAME = D264H71-sht-stage1.dwg
 PLOT DATE = 1/24/2012
 PLOT SCALE = 50.0000' / 1" IN.

CHRISTIAN-ROGE & ASSOCIATES, INC.
 ENGINEERS-PLANNERS-SURVEYORS
 211 WEST WACKER DRIVE
 CHICAGO, ILLINOIS 60606
 PHONE: (312)372-2023 FAX: (312)372-5274

DESIGNED - E.M.	REVISED -
DRAWN - B.K.	REVISED -
CHECKED - G.F.L.	REVISED -
DATE - JANUARY 2012	REVISED -

STATE OF ILLINOIS
DEPARTMENT OF TRANSPORTATION

TRAFFIC CONTROL AND PROTECTION PLAN
IL ROUTE 5 AT I-74
STAGE I
 SCALE: 1" = 50' SHEET NO. OF SHEETS STA. TO STA.

F.A.S. RTE.	SECTION	COUNTY	TOTAL SHEETS	SHEET NO.
205	(81-2HB-1)M	ROCK ISLAND	29	7
				CONTRACT NO. 64H71

MOT 01