

DATE	
BY	
FINAL SURVEY	
SURVEYED	
PLOTTED	
TEMPLATE	
NOTE BOOK	
AREAS CHECKED	
NO.	

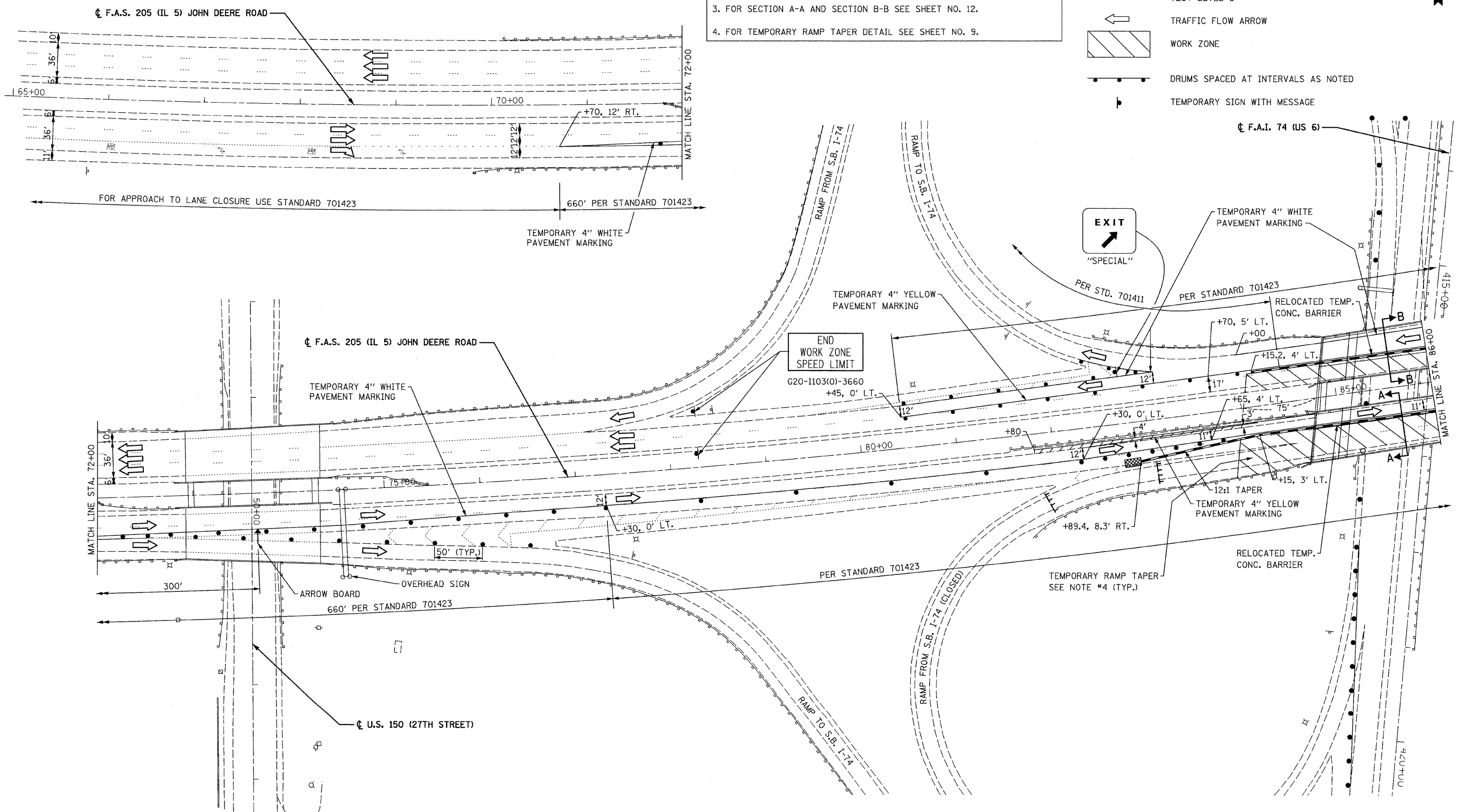
DATE	
BY	
ORIGINAL SURVEY	
SURVEYED	
PLOTTED	
TEMPLATE	
NOTE BOOK	
AREAS CHECKED	
NO.	

NOTES:

1. MEDIAN SHOULDER REPAIR WORK SHALL CONSIST OF HMA SURFACE REMOVAL 2" AND PLACEMENT OF SURFACE COURSE MIX "C", N50, 2".
2. MEDIAN SHOULDER WORK SHALL BE DONE DURING STAGE I AND UTILIZING LANE CLOSURE STANDARD 701422, "LANE CLOSURE, MULTILANE, FOR SPEEDS ≥ 45 MPH TO 55 MPH".
3. FOR SECTION A-A AND SECTION B-B SEE SHEET NO. 12.
4. FOR TEMPORARY RAMP TAPER DETAIL SEE SHEET NO. 9.

LEGEND

- PROPOSED HMA SURFACE REMOVAL, 2" HMA SURFACE COURSE, MIX 'C', N50, 2"
- TEMPORARY CONCRETE BARRIER
- RELOCATED IMPACT ATTENUATOR, TEMPORARY (NON-REDIRECTIVE) TEST LEVEL 3
- TRAFFIC FLOW ARROW
- WORK ZONE
- DRUMS SPACED AT INTERVALS AS NOTED
- TEMPORARY SIGN WITH MESSAGE



FILE NAME =D264H71-sht-stage2.01.dgn
 PLOT DATE =1/24/2012
 PLOT SCALE=50.0000' / IN.

CHRISTIAN-ROGE & ASSOCIATES, INC.
 ENGINEERS-PLANNERS-SURVEYORS
 211 WEST WACKER DRIVE
 CHICAGO, ILLINOIS 60606
 PHONE: (312)372-2023 FAX: (312)372-5274

DESIGNED	-	E.M.	REVISED	-
DRAWN	-	B.K.	REVISED	-
CHECKED	-	G.F.L.	REVISED	-
DATE	-	JANUARY 2012	REVISED	-

STATE OF ILLINOIS
DEPARTMENT OF TRANSPORTATION

TRAFFIC CONTROL AND PROTECTION PLAN
IL ROUTE 5 AT I-74
STAGE II
 SCALE: 1" = 50' SHEET NO. OF SHEETS STA. TO STA.

F.A.S. RITE	SECTION	COUNTY	TOTAL SHEETS	SHEET NO.
205	(81-2HB-1)M	ROCK ISLAND	29	11
				CONTRACT NO. 64H71
ILLINOIS				

MOT 05