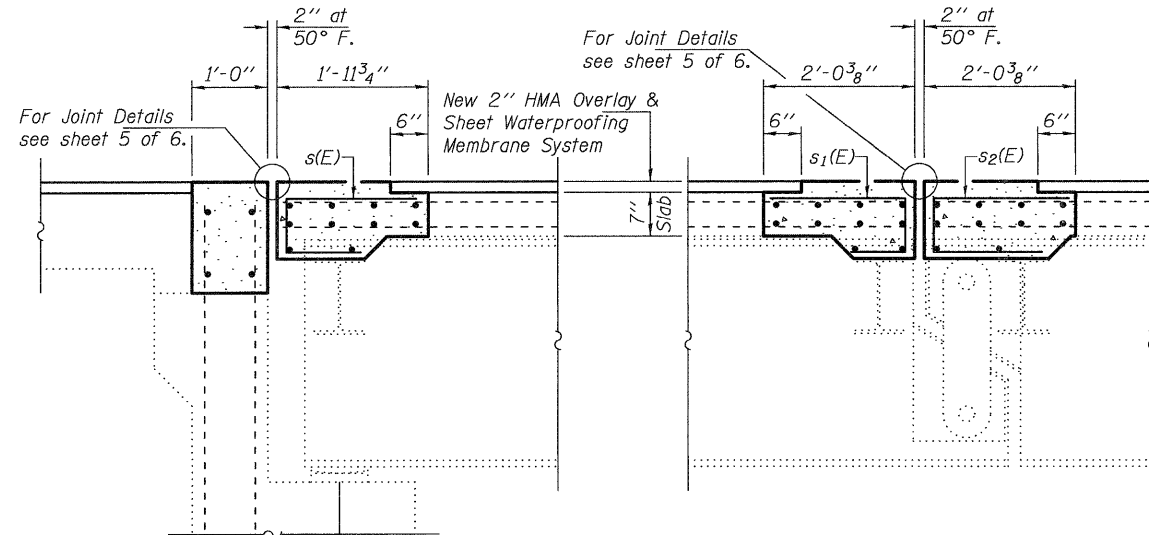


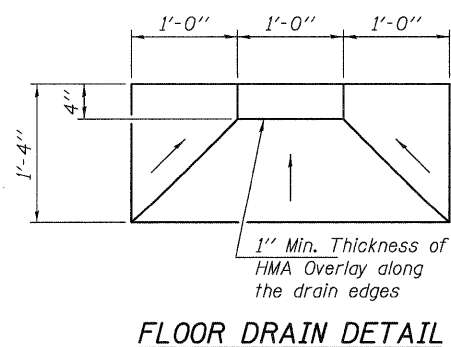
**SECTION A-A**  
Dimensions at Right  
Angle to Joint

**SECTION C-C**  
Dimensions at Right  
Angle to Joint

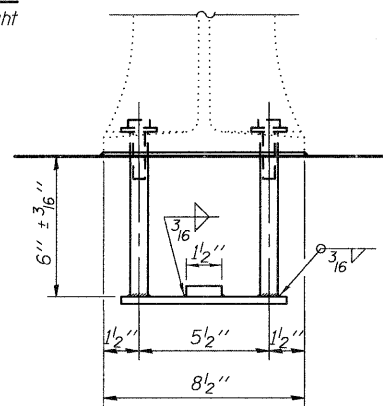


**SECTION B-B**  
Dimensions at Right  
Angle to Joint

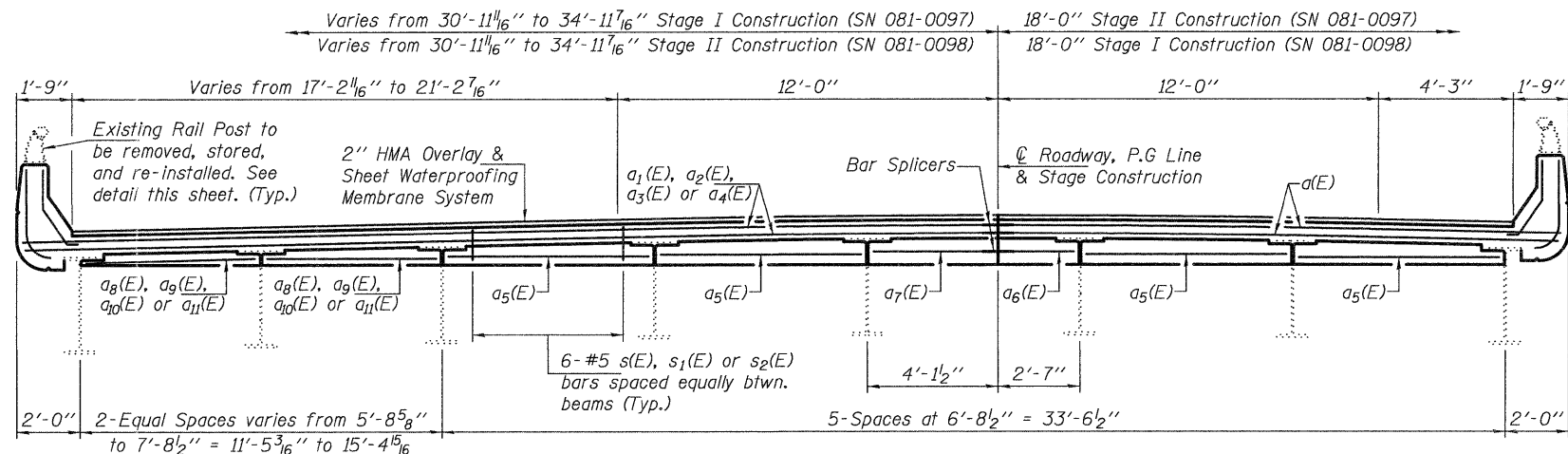
**SECTION D-D**  
Dimensions at Right  
Angle to Joint



**FLOOR DRAIN DETAIL**

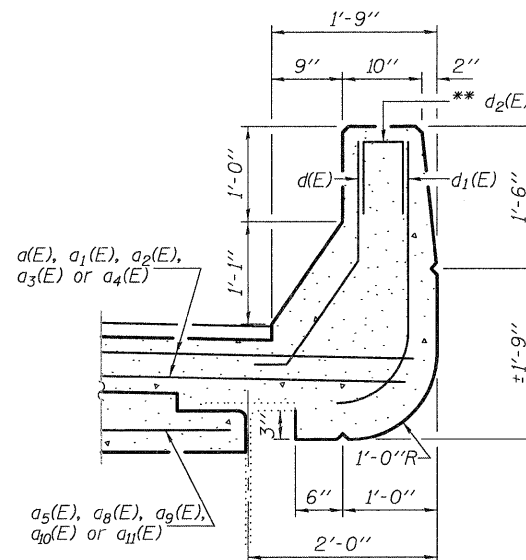


**VIEW E-E**



**TYPICAL CROSS-SECTION**

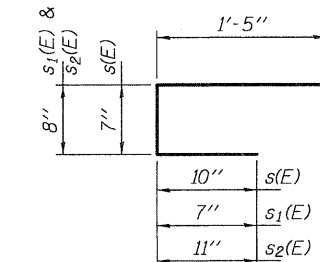
Looking East thru SN: 081-0097 (WB)  
Looking West thru SN: 081-0098 (EB)



**SECTION THRU PARAPET**

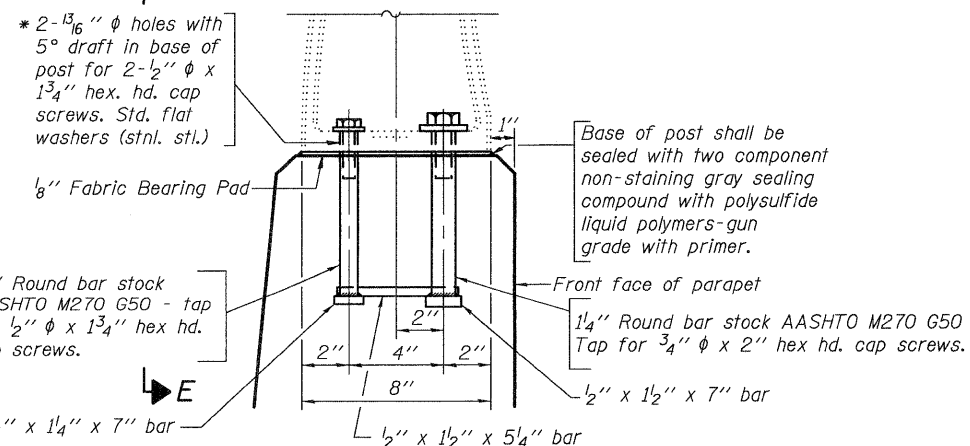
Rail Post & Anchor Device not shown  
for clarity. See details this sheet.

\*\* 2-#4 d2(E) bars  
at each rail post



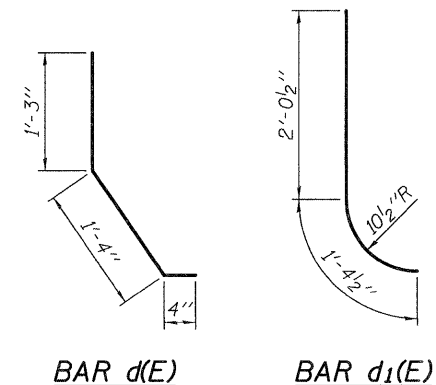
**BARS s1(E), s1(E) & s2(E)**

\* In lieu of the cast-in-place anchor device shown, the Contractor has the option of drilling and setting stainless steel anchor rods of the same diameter and grade as the specified cap screws according to Article 509.06 of the Standard Specifications. Embedment shall be according to the manufacturer's specifications.



**RAIL POST DETAILS**

Cost included with  
Concrete Superstructure.



**BILL OF MATERIAL**  
(Two Structures)

| Bar                                 | No. | Size | Length  | Shape  |
|-------------------------------------|-----|------|---------|--------|
| a(E)                                | 96  | #6   | 18'-0"  | —      |
| a1(E)                               | 16  | #6   | 31'-5"  | —      |
| a2(E)                               | 32  | #6   | 31'-11" | —      |
| a3(E)                               | 32  | #6   | 35'-0"  | —      |
| a4(E)                               | 16  | #6   | 35'-6"  | —      |
| a5(E)                               | 96  | #6   | 6'-6"   | —      |
| a6(E)                               | 24  | #6   | 2'-4"   | —      |
| a7(E)                               | 24  | #6   | 3'-11"  | —      |
| a8(E)                               | 8   | #6   | 5'-6"   | —      |
| a9(E)                               | 16  | #6   | 5'-10"  | —      |
| a10(E)                              | 16  | #6   | 7'-5"   | —      |
| a11(E)                              | 8   | #6   | 7'-8"   | —      |
| d(E)                                | 72  | #4   | 2'-11"  | L      |
| d1(E)                               | 72  | #5   | 3'-5"   | L      |
| d2(E)                               | 48  | #4   | 2'-0"   | Π      |
| h(E)                                | 16  | #6   | 18'-0"  | —      |
| h1(E)                               | 8   | #6   | 31'-5"  | —      |
| h2(E)                               | 8   | #6   | 35'-6"  | —      |
| s(E)                                | 168 | #5   | 3'-2"   | C      |
| s1(E)                               | 168 | #5   | 3'-0"   | C      |
| s2(E)                               | 168 | #5   | 3'-4"   | C      |
| Concrete Removal                    |     |      | Cu. Yd. | 66.7   |
| Concrete Superstructure             |     |      | Cu. Yd. | 72.8   |
| Bar Splicers                        |     |      | Each    | 136    |
| Reinforcement Bars,<br>Epoxy Coated |     |      | Pound   | 12,420 |

DESIGNED - IJL  
CHECKED - ATH  
DRAWN - Kyle M. Steffen  
CHECKED - IJL ATH

EXAMINED  
ACTING ENGINEER OF STRUCTURAL SERVICES  
PASSED  
ACTING ENGINEER OF BRIDGES AND STRUCTURES

DATE - MARCH 12, 2012

STATE OF ILLINOIS  
DEPARTMENT OF TRANSPORTATION

REPAIR DETAILS  
SN 081-0097 (WB) & 0098 (EB)

SHEET NO. 4 OF 6 SHEETS

| F.A.S. RTE. | SECTION     | COUNTY      | TOTAL SHEETS | SHEET NO. |
|-------------|-------------|-------------|--------------|-----------|
| 205         | (81-2HB-1M) | ROCK ISLAND | 29           | 21        |

CONTRACT NO. 64H71  
ILLINOIS FED. AID PROJECT