

F.A.I. RTE.	SECTION	COUNTY	TOTAL SHEETS	SHEET NO.
39	(201-1B)M-3	WINNEBAGO	38	1
		ILLINOIS	CONTRACT NO. 64H72	

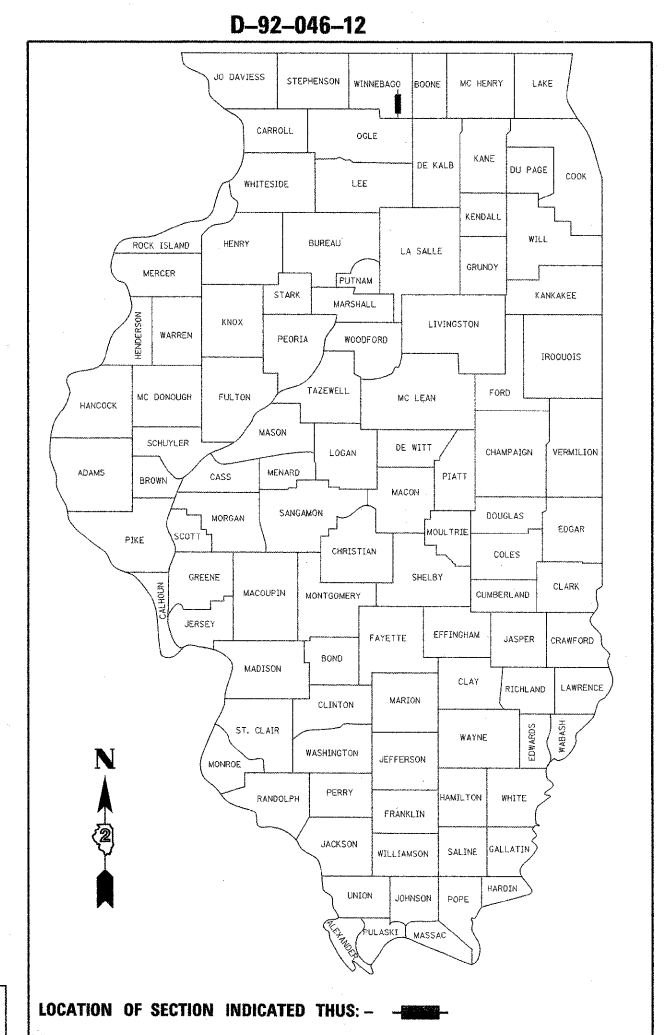
INDEX OF SHEETS

SHEET NO.	DESCRIPTION
1	COVER SHEET
2	GENERAL NOTES, UTILITY NOTES & HIGHWAY STANDARDS
3-5	SUMMARY OF QUANTITIES
6-7	TYPICAL SECTIONS
8-10	SCHEDULE OF QUANTITIES
11	CROSSOVER PAVING DETAILS
12-16	TRAFFIC CONTROL PLAN - STAGE 1
17-21	TRAFFIC CONTROL PLAN - STAGE 2
22	TEMPORARY EROSION CONTROL PLAN
23-27	DISTRICT 2 STANDARDS
28-38	BRIDGE PLANS

FOR LIST OF HIGHWAY STANDARDS, SEE SHEET NO. 2

STATE OF ILLINOIS
DEPARTMENT OF TRANSPORTATION
DIVISION OF HIGHWAYS
PROPOSED
HIGHWAY PLANS

FAI ROUTE 39 (I-39)
SECTION (201-1B)M-3
PROJECT: NHI-039-1(031)116
WINNEBAGO COUNTY
BRIDGE & DECK REPAIRS



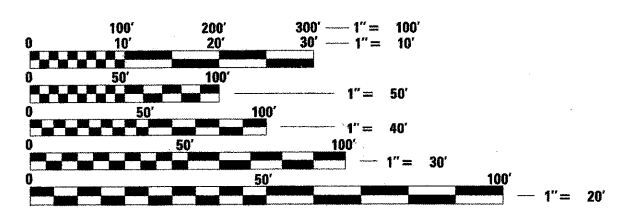
UTILITY NOTE

THE LOCATIONS OF THOSE BURIED AND ABOVEGROUND UTILITIES SHOWN ARE APPROXIMATE, ARE SHOWN FOR CONTRACTOR INFORMATIONAL USE ONLY, AND ARE NOT TO BE REFERENCED FOR CONSTRUCTION PURPOSES. THE IMPLIED PRESENCE OR ABSENCE OF UTILITIES IS NOT TO BE CONSTRUED BY THE OWNER, ENGINEER, CONTRACTOR, OR SUBCONTRACTORS TO BE AN ACCURATE AND COMPLETE REPRESENTATION OF UTILITIES THAT MAY OR MAY NOT EXIST ON THE CONSTRUCTION SITE. BURIED AND ABOVEGROUND UTILITY LOCATION, IDENTIFICATION, AND MARKING ARE THE SOLE RESPONSIBILITY OF THE CONTRACTOR, REROUTING, DISCONNECTION, PROTECTION, ETC. OF AN UTILITIES MUST BE COORDINATED BETWEEN THE CONTRACTOR, UTILITY COMPANY, AND OWNER. SITE SAFETY, INCLUDING THE AVOIDANCE OF HAZARDS ASSOCIATED WITH BURIED AND ABOVEGROUND UTILITIES, REMAIN THE SOLE RESPONSIBILITY OF THE CONTRACTOR



Know what's below.
Call before you dig.

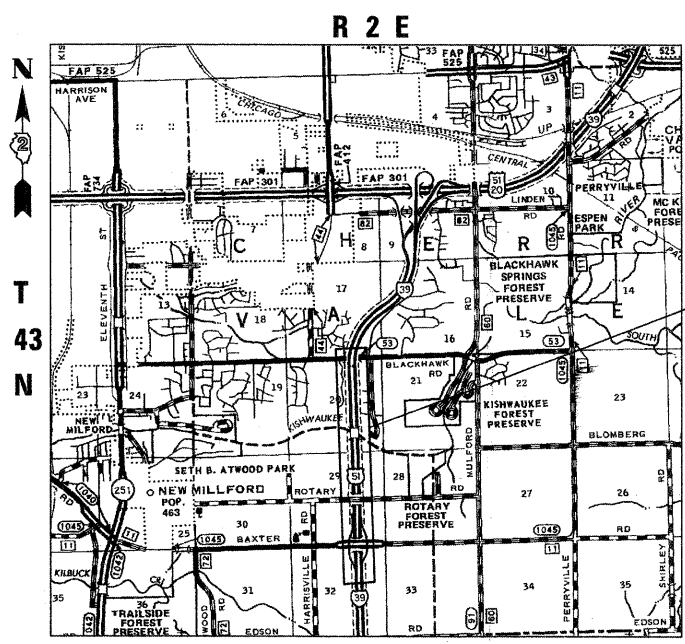
J.U.L.I.E.
JOINT UTILITY LOCATION INFORMATION FOR EXCAVATION
1-800-892-0123
OR 811



FULL SIZE PLANS HAVE BEEN PREPARED USING STANDARD ENGINEERING SCALES. REDUCED SIZED PLANS WILL NOT CONFORM TO STANDARD SCALES. IN MAKING MEASUREMENTS ON REDUCED PLANS, THE ABOVE SCALES MAY BE USED.

PROJECT ENGINEER — JOHN M. HEYEN, P.E. 217-788-2450
PROJECT MANAGER — JEFFREY J. TATAREK, P.E., S.E., 217-788-2450
CONTRACT NO. 64H72

C-92-127-12



AREA LOCATION PLAN



GROSS LENGTH	= 1350 FT.	= 0.256 MILE (NB)
	= 1350 FT.	= 0.256 MILE (SB)
NET LENGTH	= 1350 FT.	= 0.256 MILE (NB)
	= 1350 FT.	= 0.256 MILE (SB)

PROJECT LOCATION	SB	NB
IMPROVEMENT BEGINS:	2405 + 00	2397 + 50
SECTION BEGINS:	2418 + 30	2419 + 10
SECTION ENDS:	2431 + 55	2430 + 69
IMPROVEMENT ENDS:	2449 + 00	2447 + 11

SN 101-0133 (SB) STA. 2419 + 60 TO STA. 2431 + 30
 SN 101-0134 (NB) STA. 2418 + 81 TO STA. 2430 + 44

SIGNATURE: *John M. Heyen*
 DATE SIGNED: 2/9/12
 LICENSE EXP.: 11/30/2013
 SHEETS 1-22

FUNCTIONAL CLASSIFICATION
INTERSTATE
2009 ADT = 29,100
P.V. = 68.9% S.U. = 4.3% M.U. = 26.8%
ROCKFORD & CHERRY VALLEY TOWNSHIPS
SECTIONS 17, 20, 29, 32

STATE OF ILLINOIS
 DEPARTMENT OF TRANSPORTATION
 DIVISION OF HIGHWAYS

SUBMITTED Feb 14 2012
Eric S. Therkildsen
 DEPUTY DIRECTOR OF HIGHWAYS, REGION ENGINEER

March 23 2012
John D. Casanelli, P.E.
 acting ENGINEER OF DESIGN AND ENVIRONMENT

March 23 2012
William R. Freyer
 acting DIRECTOR OF HIGHWAYS, CHIEF ENGINEER

PRINTED BY THE AUTHORITY
OF THE STATE OF ILLINOIS

