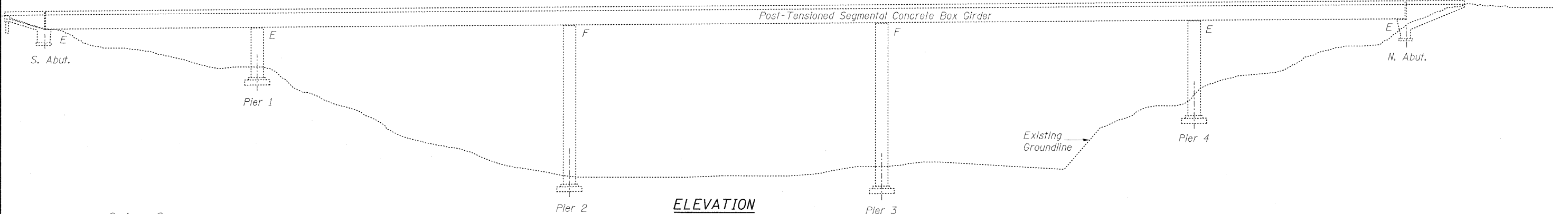
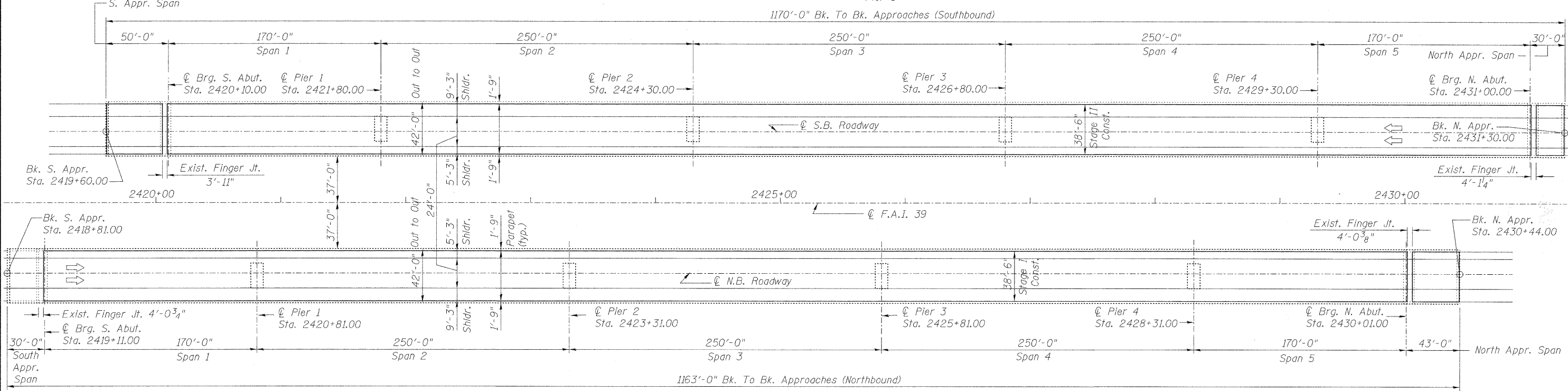


Existing Structure

S.N. 101-0133 (S.B.) and S.N. 101-0134 (N.B.)
 Built as F.A. Route 412, Section 201-1B in 1980. The Southbound and Northbound superstructures each consist of a 1090'-0" post-tensioned segmental concrete box girder.
 In 2008 the Structure was reconstructed. The post-tensioned segmental concrete box girders were retrofitted with external post-tensioning, waterproofing membrane and wearing surface were removed and replaced, and a FAST system installed.
 Traffic shall be maintained on existing S.N. 101-0133 during reconstruction of S.N. 101-0134 and on S.N. 101-0134 during reconstruction on S.N. 101-0133 by use of crossovers.
 Salvage - FAST system spray disks and piping on Bridge. Materials shall be boxed, labeled and placed inside Pump Station Building, located on-site.



ELEVATION



PLAN

PROPOSED SCOPE OF WORK

1. Replace existing deck overlay and waterproofing membrane
2. Remove Fixed Anti-icing Spray Technology (FAST System) Spray Disks on bridge, remove & reinstall sensors on bridge, remove & reinstall spray disks on approach spans.
3. Modify Electrical System to install Concrete Deviator Restraints.
4. Install Concrete Deviator Restraints

DESIGN SPECIFICATIONS

NEW CONSTRUCTION

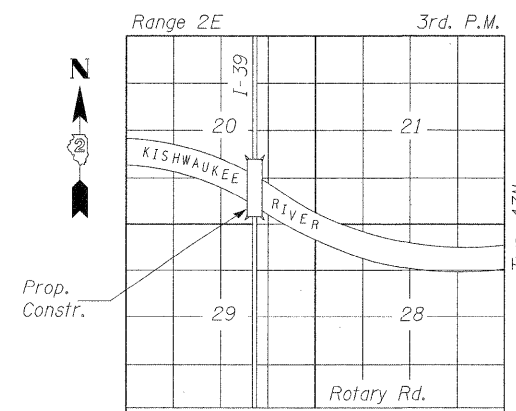
2010 AASHTO LRFD Bridge Design Specifications, 5th Edition with 2010 Interims.

DESIGN STRESSES

FIELD UNITS (NEW CONST.)

$f'_c = 5,500$ psi (Superstructure - Self Consolidating Concrete)
 $f_y = 60,000$ psi (Reinf)

LOADING HS 20-44 (EXIST. CONST.)



LOCATION SKETCH

APPROVED
 FOR STRUCTURAL ADEQUACY ONLY
 ENGINEER OF BRIDGES AND STRUCTURES



Michael N. Mendenhall
 SIGNATURE
 02-08-2012
 DATE
 LIC. EXP. DATE: 11-30-2012

GENERAL PLAN
I-39 (FAI 39) OVER KISHWAUKEE RIVER
SECTION (201-1B)M-3
WINNEBAGO COUNTY
STATION 2425+00
STRUCTURE NOS. 101-0133 (S.B.) & 101-0134 (N.B.)

© Copyright Hanson Professional Services Inc. 2012

LAYOUT
 DRAWN
 REVIEWED

LAYOUT	FILE NAME =
DRAWN	USER NAME =
REVIEWED	DESIGNED - MNM
	CHECKED - TEH
	DRAWN - Rod (Parson's)
	CHECKED - MNM
	REVISED

STATE OF ILLINOIS
DEPARTMENT OF TRANSPORTATION

SHEET NO. 01 OF 11 SHEETS

F.A.I. RTE.	SECTION	COUNTY	TOTAL SHEETS	SHEET NO.
39	(201-1B)M-3	WINNEBAGO	38	28
CONTRACT NO. 64H72			ILLINOIS FED. AID PROJECT	