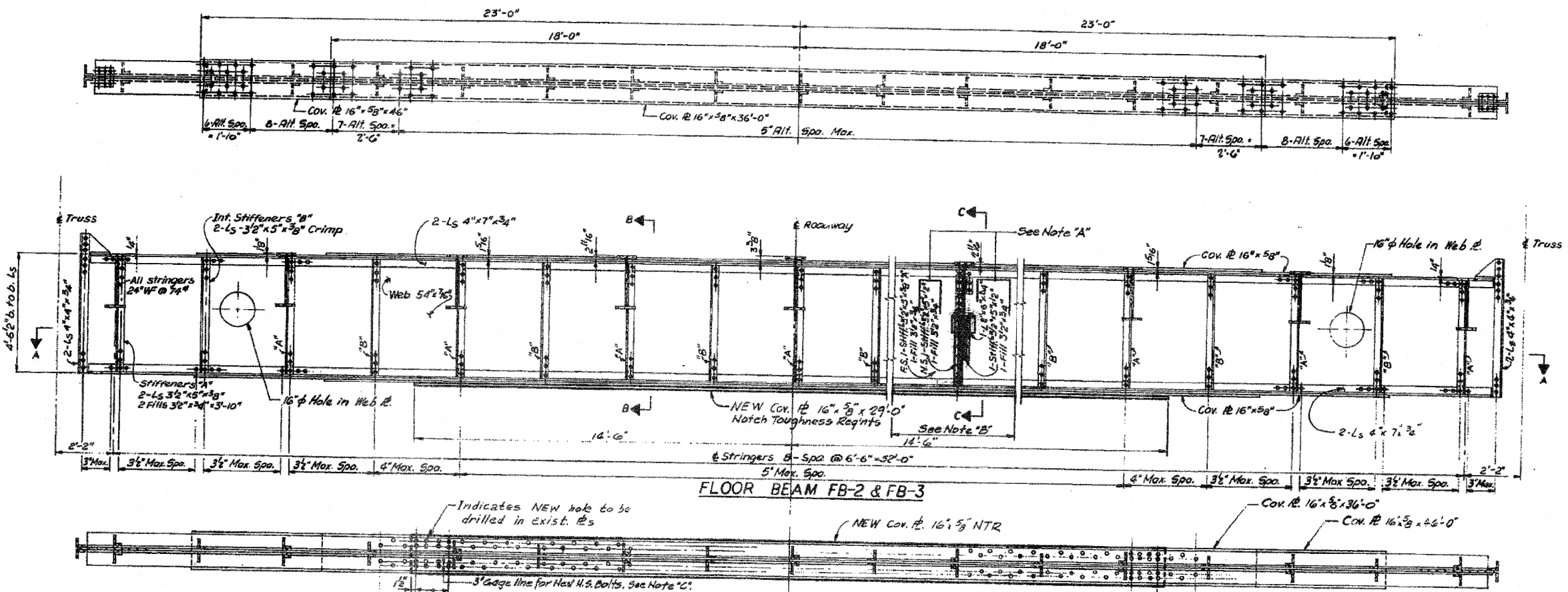


Sta. 14 of 25	ROUTE NO. 599	SECTION 17(D)BR	COUNTY ROCK ISLAND	TOTAL SHEETS 80	SHEET NO. 27
FED. ROAD DIST. NO. 7 ILLINOIS PROJ. BR-F-599(3)					

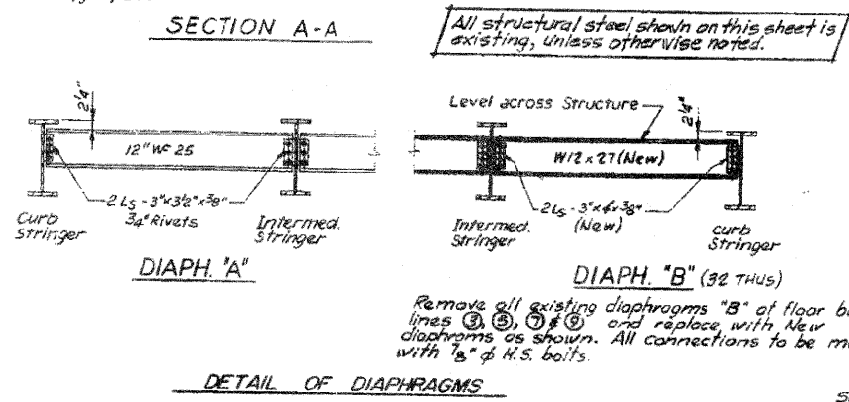
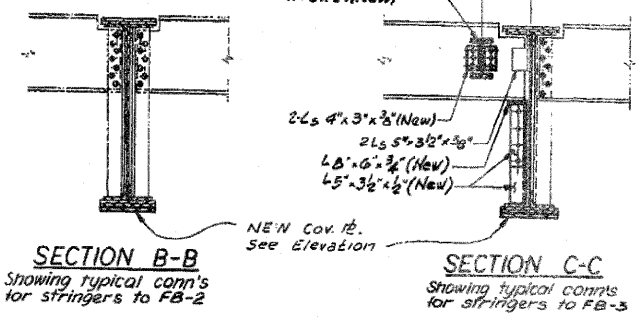


**FLOOR BEAM FB-2 & FB-3**

**Note "A"**  
Remove all existing Stringer Support Brackets on all Floor Beams FB-3 and replace with New Stringer Support Brackets, as shown. All connections to be made with 3/8" H.S. Bolts.

**Note "B"**  
Stringer Support Brackets are located at all Stringers (N.S.) of Floor Beam FB-3, only. (36 thus req'd)

**Note "C"**  
Existing Gage lines may not be 3" - Verify in field.



- Step by step procedure for the installation of New Plate on the bottom flange of the existing interior floor beam.
1. Clamp flange material at ± 8 inch intervals.
  2. Remove existing rivet heads from the underside of the flange cover plates. Only mechanical means of removal will be allowed. Do not remove top heads and rivet shank at this time.
  3. Clean the existing bottom flange plates that are to be in contact with new cover plates by Method 1 in accordance with the Std. Specs.
  4. Loosen clamps, insert new plate, and tighten clamps. Note: Do not prime faces of new plates in contact with existing. Clean per Art. 506.03.
  5. Drill through existing rivets and new plates after removal of top rivet heads. Replace drilled out rivets with High Strength Bolts. No more than 4 (Four) rivets will be drilled out prior to being replaced with 9/16 diameter High Strength Bolts. During Stage I, rivet removal shall begin at the East end of cover plate and progress to the center of the floor beam. During Stage II, rivet removal shall begin at the center of the floor beam and progress to the west end. (See Note 'd' on sheet 13.)
  6. Remove clamps.
- Estimated fasteners for 5-FB2 & 4-FB3 = 5000-9" H.S. Bolts, including fasteners for new plate installation.

Sta. 24+38.25

ILLINOIS DIVISION OF HIGHWAYS			
E A ROUTE 599			
PROJECT BR-F-599(3)		SECTION 17(D)BR	
ROCK ISLAND COUNTY			
INTERIOR FLOOR BEAMS & DETAILS - NORTH CHANNEL			
Designed By: SK	Drawn By: JC	Quantity By: RB	
Checked By: DK	Checked By: SK	Checked By: SK	

Revised July 19, 1984 RVS

**TORNROSE, CAMPBELL & ASSOCIATES**



FILE NAME =	USER NAME = linkdj	DESIGNED -	REVISED -	STATE OF ILLINOIS	SECTION	COUNTY	TOTAL SHEETS	SHEET NO.
D:\BR\Bridge Painting\Contracts\PAINTING\2012-1\PLANeng.dgn	2012-1\PLANeng.dgn	DRAWN -	REVISED -	DEPARTMENT OF TRANSPORTATION	var 02 Bridge Painting 2012-1	var	24	13
PLOT SCALE = 49.9862 1/1 in.		CHECKED -	REVISED -					CONTRACT NO. 64H86
PLOT DATE = Wed Jan 25 14:17:16 2012		DATE -	REVISED -					ILLINOIS FED. AID PROJECT