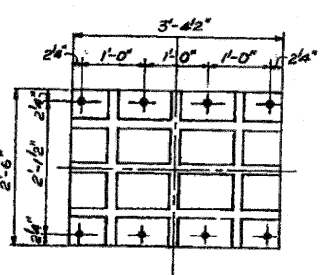


NOTE
Drill and Replace 1/2 of Total Number of Anchor Bolts at one time, Alternate Bolt Replacement.

FIXED BEARING
N. Abut.

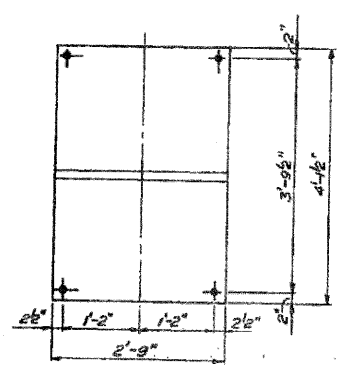
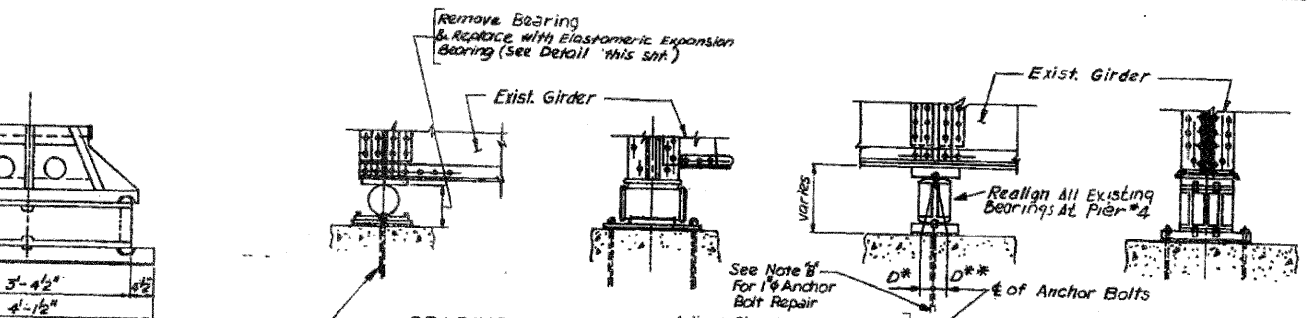


Cut Exist. Anchor Bolts to Top of Exist. Conc. and Drill New Anchor Bolt Hole as per Anchor Bolt Detail Sheet 24

BEARING DETAILS
pier 1 of S. Abut.

Adjust Pier 4 bearings for temp. if D* or D** are 1/2" off values as determined in Note A this sheet.

BEARING DETAILS
piers 2 & 4

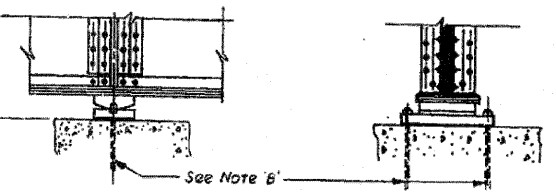


EXPANSION BEARING
Pier 1, Span 1

FILL PLATE DIMENSIONS
Pier 1 & So. Abutment

| BMS | M | N | P | R | S | T | U | V | W | X |
|---------------|---------------------|--------|-------|--------|-------|-------|--------|-------|--------|-------|
| Fill R Thick. | 2 3/8 | 3 5/16 | 2 5/8 | 3 5/16 | 2 5/8 | 2 5/8 | 3 5/16 | 2 5/8 | 3 5/16 | 2 5/8 |
| Fill R W x L | All R's 11" x 2'-3" | | | | | | | | | |

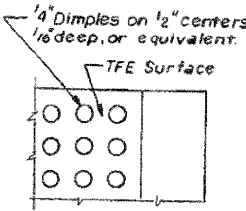
Note: All work shown on this sheet is existing unless otherwise indicated.



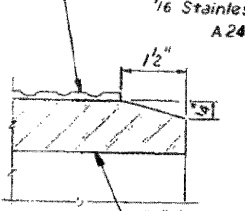
BEARING DETAILS
pier 3

NOTE "A" For Setting of Anchor Bolts at Exp. Brg.
 D* = (Side of Brg. Away From Fixed Bearing)
 D* = 1/8" Per 100 Ft. of Exp. for every 15° Below the Normal Temp. of 50°
 D** = (Side of Brg. Toward Fixed Bearing)
 D** = 1/8" Per 100 Ft. of Exp. for every 15° Above the Normal Temp. of 50°

NOTE "B" All loose bolts shall be pulled out and replaced with new 1/2" x 1/2" x 1/2" anchor bolts and epoxy grout as per detail shown on Sht. 24 - Cost incidental to Structural Steel.
 Total No. required:
 NO. Abut & Pier 1, Span 1 = 10
 Piers 2, 3, & 4 = 20
 All anchor bolts with corroded heads shall be welded to new washer and bearing assy. - Cost incidental to Struct. Steel.
 Total No. required:
 NO. Abut & Pier 1, Span 1 = 5
 Piers 2, 3, & 4 = 10



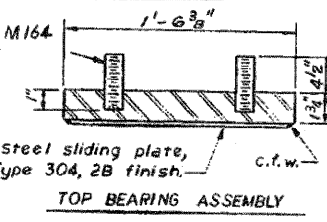
PLAN TFE SURFACE



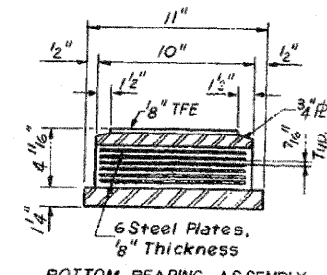
SECTION THRU TFE

NOTE: The 1/2" TFE sheet shall be bonded directly to the top steel plate with a two-component medium viscosity epoxy resin conforming to the requirements of the Federal Specification MMM-A-134, Type I. The bond agent shall be applied on the full area of the contact surfaces. Bonding of 1/2" TFE sheet during vulcanizing process will be permitted provided the process and method of adjusting assembly height is approved by the Engineer.

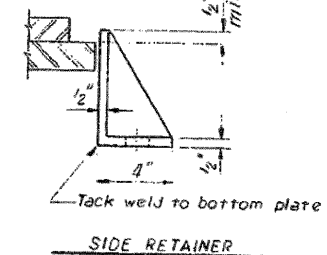
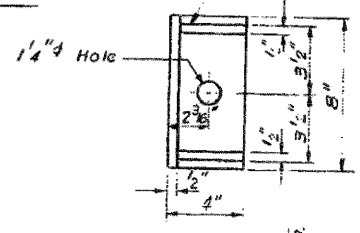
NEW ELASTOMERIC EXPANSION BEARING
Pier 1 Span 2 & S. Abut.



TOP BEARING ASSEMBLY



BOTTOM BEARING ASSEMBLY



SIDE RETAINER

Sta 24+38.25

| | | | |
|-------------------------------------|----------------|-----------------|--|
| ILLINOIS DIVISION OF HIGHWAYS | | | |
| F. A. ROUTE 599 | | | |
| PROJECT BR-F-599(3) SECTION 17(D)BR | | | |
| ROCK ISLAND COUNTY | | | |
| BEARING DETAILS-NORTH CHANNEL | | | |
| Designed By: SK | Drawn By: LK | Quantity By: LK | |
| Checked By: ED | Checked By: ED | Checked By: RE | |

TORNROSE, CAMPBELL & ASSOCIATES

STATE OF ILLINOIS
DEPARTMENT OF TRANSPORTATION