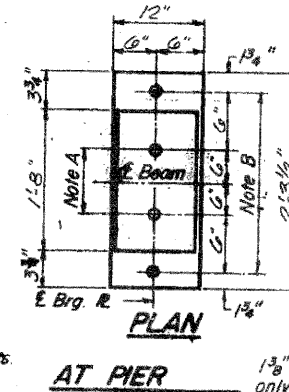
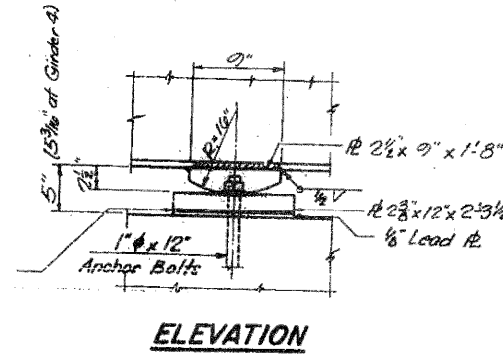


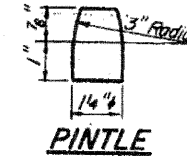
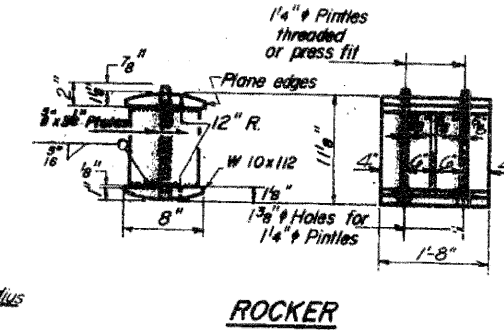
NOTE A
1-3/8" Holes - 1" deep in top R for pintles Thread or press fit pintles into bottom R.



NOTE B
1-1/2" Holes for 1" anchor bolts for 1-1/4" x 12" x 2-3/4" R. Washers under nut.

NOTE C
1-3/8" Holes 1" deep in top R only for 1-1/4" pintles.

BEARING ASSEMBLY DETAILS



NOTES ON SETTING OF ANCHOR BOLTS AT EXP. BRGS.

- a) D^* (Side of brg away from fixed brg)
 $D^* = 1/8"$ per each 100' of expansion for every 15° fall below the normal temp. of 50°F
 D^{**} (Side of brg toward fixed brg)
 $D^{**} = 1/8"$ per each 100' of expansion for every 15° rise above the normal temp. of 50°F
- b) After beams have been erected and dimensions D^* or D^{**} determined, holes shall be drilled and anchor bolts shall be grouted in place. All fixed anchor bolts may be built into the masonry.

DESIGNED S. MCK.	EXAMINED	19
CHECKED A. KC.	PASSED	
DRAWN P.G. Barnett & C.D.C.	APPROVED	
CHECKED S. MCK.		

I-2-B 9-1-65, 8-1-70

SHOES
F.A. RTE. 403 - SEC. 195 - 348-1
WHITESIDE COUNTY
STATION 2278+53.06