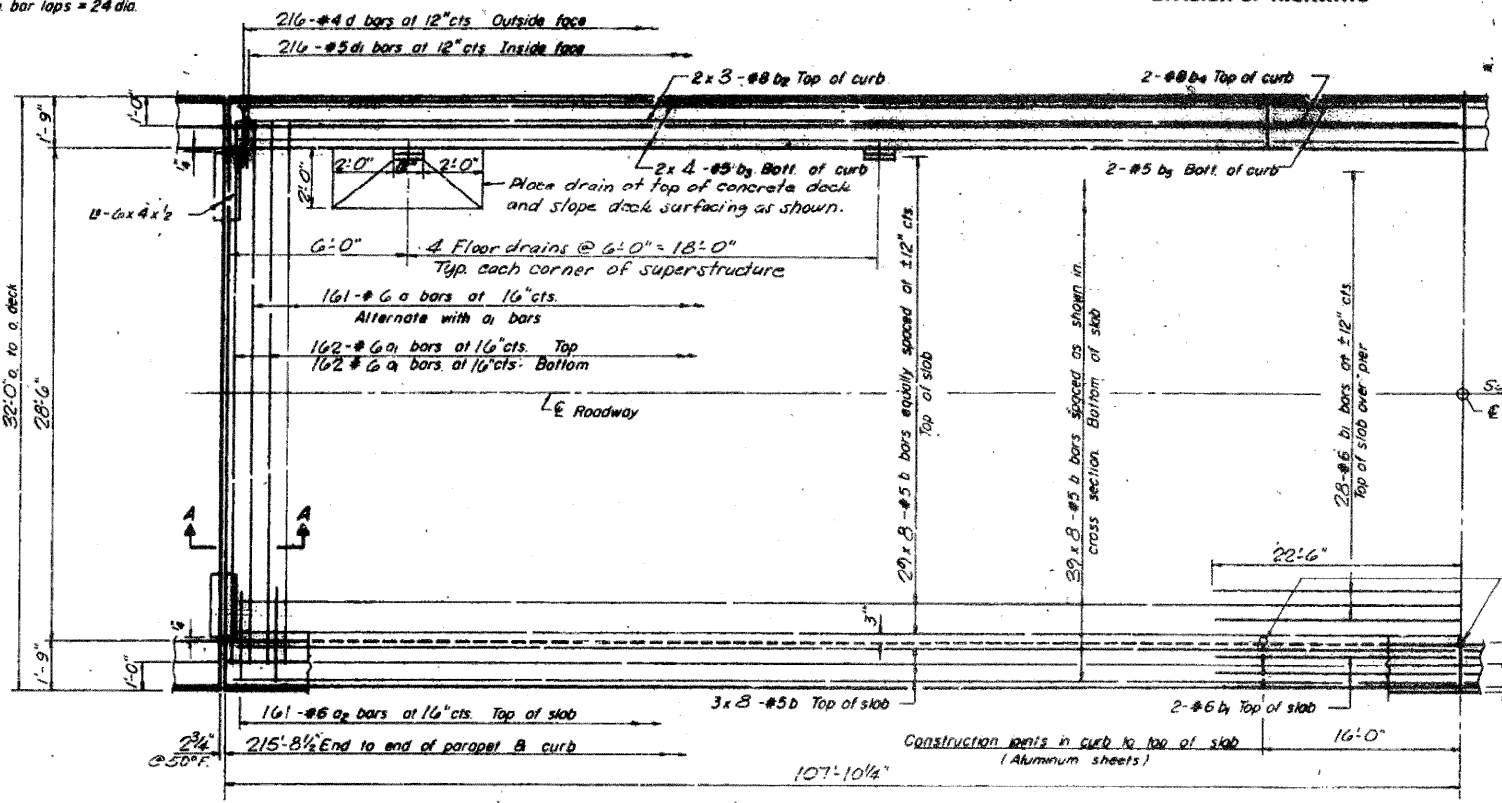


NOTE:
 Bars indicated thus 20 x 3-#5 etc.
 indicates 20 lines of bars with 3
 lengths per line.
 Min. bar laps = 24 dia.

STATE OF ILLINOIS
 DIVISION OF HIGHWAYS

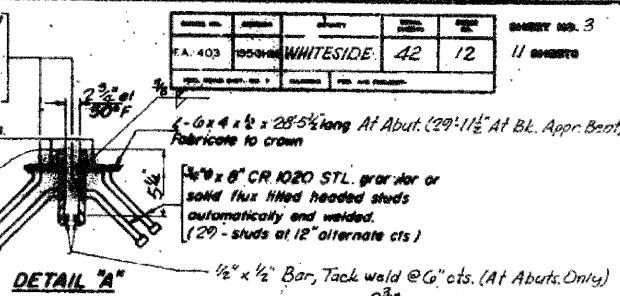
PROJECT NO.	SECTION	SHEET NO.	TOTAL SHEETS
F.A. 403	WHITESIDE 42	12	11 SHEETS



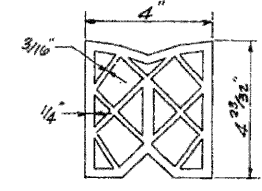
HALF PLAN

7/8" holes at 12" cts. for 3/4" bolts set on 24" gage line. All bolts shall be turned, seated or clipped off flush with back of angles after forms are removed.

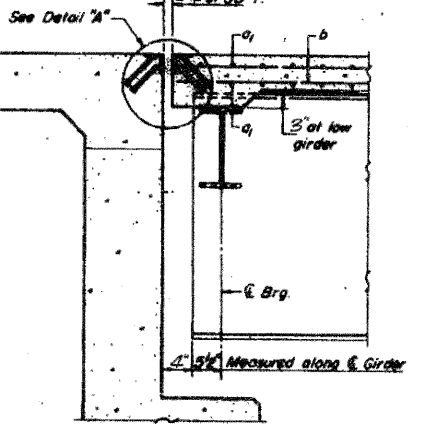
7/8" vent holes at 12" cts. set on 1 1/2" gage line.
 12-1" x 1 1/2" x 28'-5 1/2" (29'-11 1/2" @ Appr. Bent)



DETAIL A

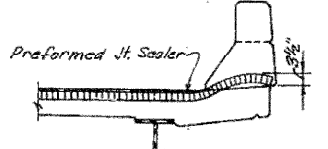


PREFORMED JOINT SEALER, 4"



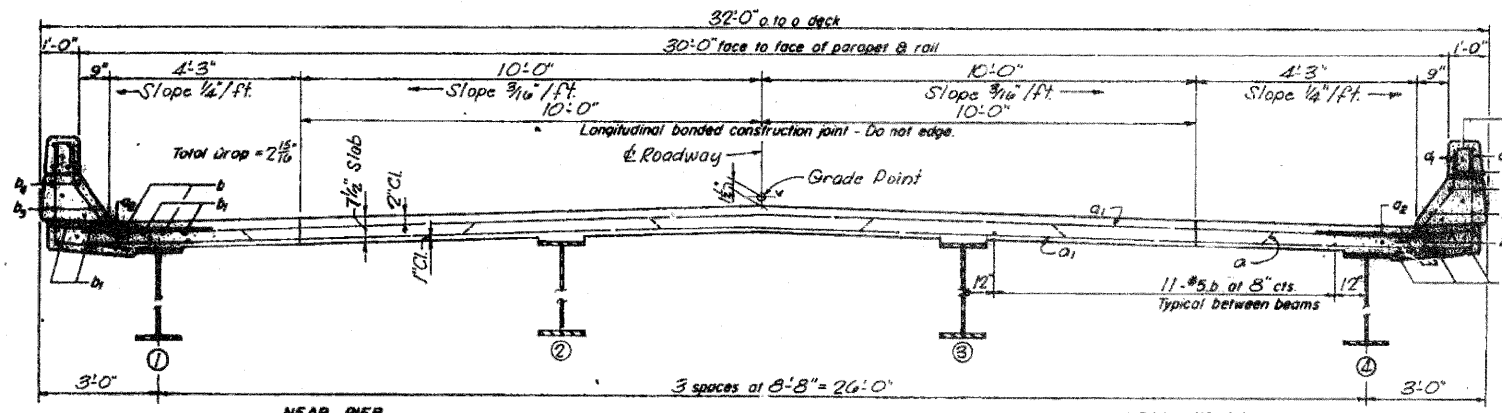
SECTION A-A

1/2" Drain holes under Interlayer Protective Coating at each joint. (Typ. each side)

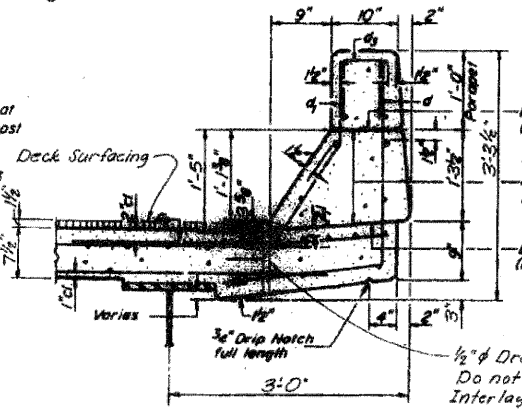


END OF SEALER TREATMENT

NOTE: For placement of bars d1 and e1 thru e3 see sheet # 5.



CROSS SECTION

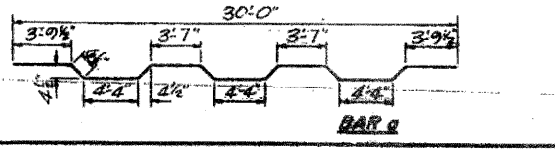


CURB SECTION

BILL OF MATERIAL

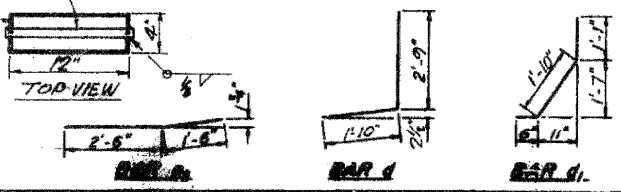
Bar	Qty	Size	Notes
a	107	#6	2150
a1	322	#6	30'-0"
a2	322	#6	4'-0"
b	592	#5	28'-0"
b1	32	#5	43'-0"
b2	24	#5	15'-0"
b3	32	#5	8'-0"
b4	2	#5	10'-0"
b5	5	#5	15'-0"
d	432	#4	4'-7"
e	432	#4	3'-5"
Reinforcement Bars	lbs	49650	
Class X Concrete	Cu. Yds	763.9	

DESIGNED	C. Clary	EXAMINED	
CHECKED	S. McKnight	PASSED	
DRAWN	C. Clary	APPROVED	
CHECKED	S. McKnight		



DRAIN DETAILS

3/4" x 1'-1" Aluminum Bar A.S.T.M. B211 alloy 6061-T6
 3/8" Aluminum Sheets Welded A.S.T.M. B209 alloy 6061-T6 or Aluminum Extrusions A.S.T.M. B221 alloy 6061-T6



TOP VIEW

SUPERSTRUCTURE MAIN SPANS
 F.A. RTE. 403-SEC. 195-3HB-2
 WHITESIDE COUNTY
 STATION 2949+74.27