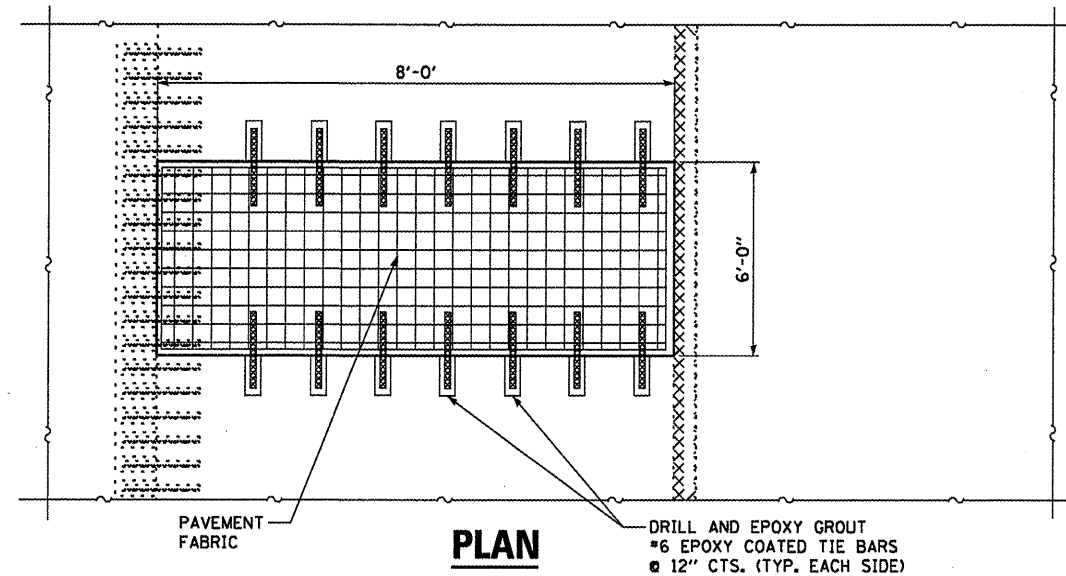


PLAN

**Bill of Materials for
Pavement Patching (Full Depth)**

ITEM	UNIT	QUANTITY
Saw Cuts	Foot	16
Concrete Removal	Cu. Yd.	2
Concrete Replacement	Cu. Yd.	2
Pavement Fabric	Pound	5
Drill & Epoxy Grout #6 Tie Bars	L.S.	14

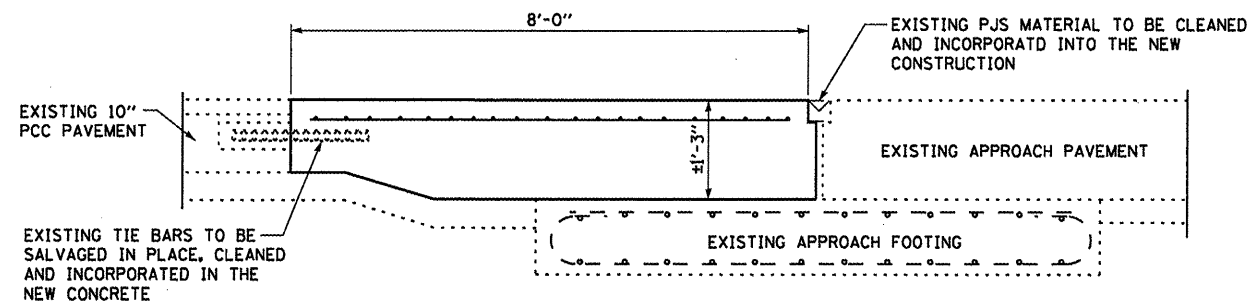
"QUANTITIES FOR INFORMATION ONLY"



PLAN

BILL OF MATERIAL

ITEM	UNIT	QUANTITY
CLASS B PATCH, TYPE I 15"	SQ YD	5



CROSS SECTION

FILE NAME =	USER NAME = patelij	DESIGNED - RON WOODSHANK	REVISED -
cr\pw_work\p\dot\patelij\d0273391\0368899-ahd-details.dgn		DRAWN - RON WOODSHANK	REVISED -
PLOT SCALE = 100:1 1/4" = 1"		CHECKED -	REVISED -
PLOT DATE = 2/16/2012		DATE -	REVISED -

STATE OF ILLINOIS
DEPARTMENT OF TRANSPORTATION

PAVEMENT PATCHING (FULL DEPTH) DETAILS

SCALE: _____ SHEET 1 OF 1 SHEETS STA. _____ TO STA. _____

F.A.I. RTE. 80	SECTION (50-2BR1)	COUNTY LASALLE	TOTAL SHEETS 29	SHEET NO. 11
CONTRACT NO. 66889				ILLINOIS FED. AID PROJECT