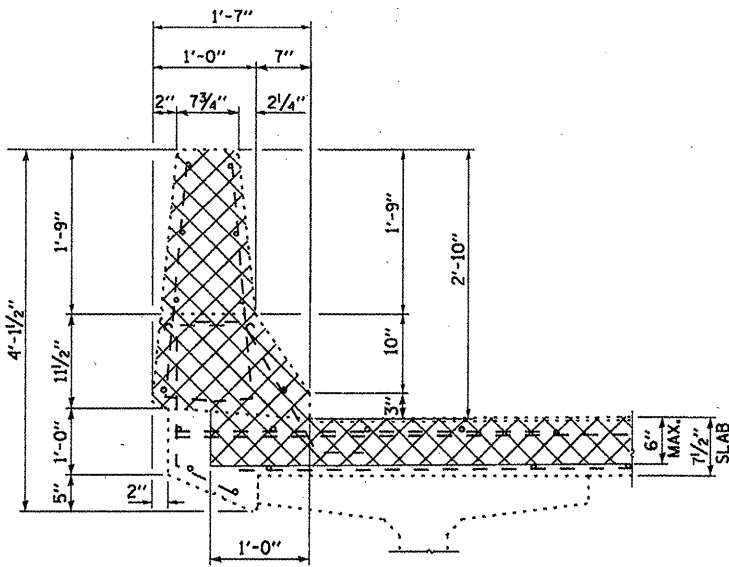
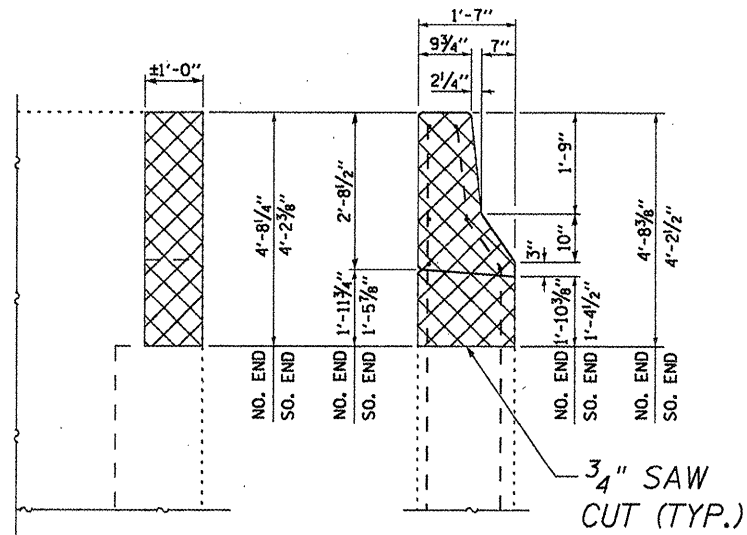


SECTION A-A



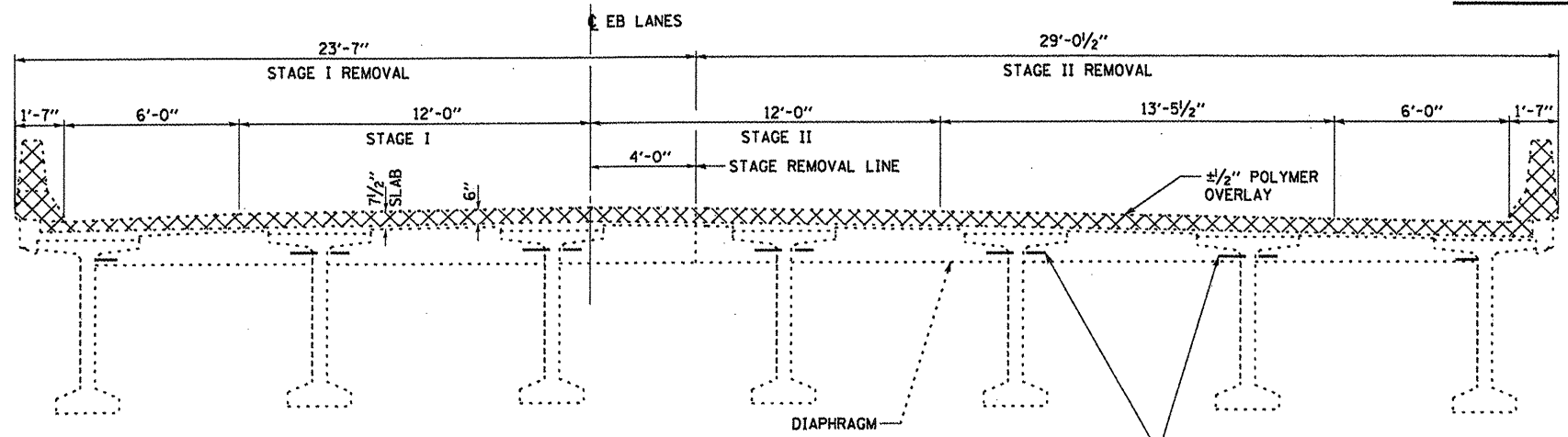
SECTION AT CURB



ELEVATION

END ELEVATION

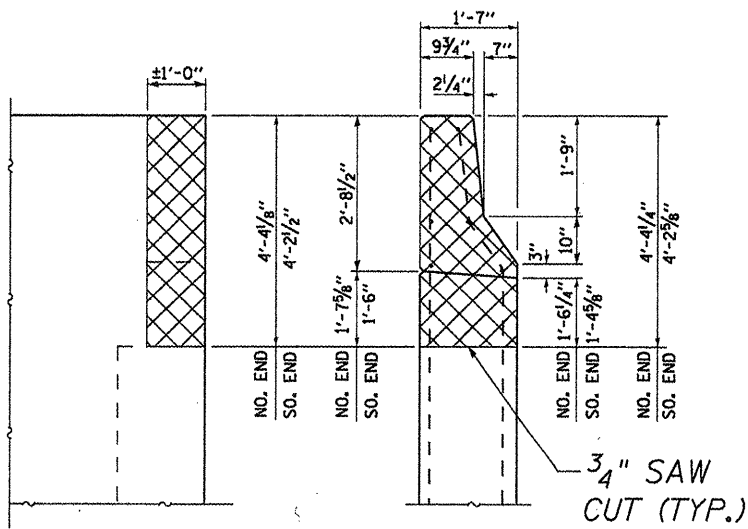
W. ABUT. WINGWALL



CROSS SECTION AT WEST ABUTMENT

LOOKING EAST

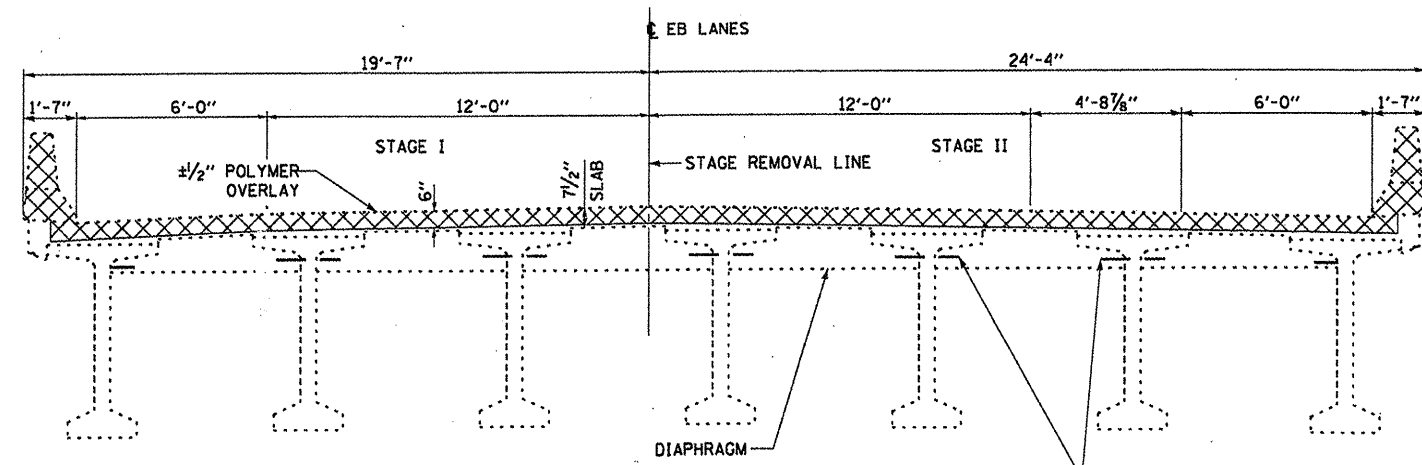
MEASUREMENTS ARE AT RIGHT L'S TO CL RDWY



ELEVATION

END ELEVATION

E. ABUT. WINGWALL



CROSS SECTION AT EAST ABUTMENT

LOOKING EAST

MEASUREMENTS ARE AT RIGHT L'S TO CL RDWY

FILE NAME =	USER NAME = petaluj	DESIGNED - RON WOODSHANK	REVISED -	STATE OF ILLINOIS DEPARTMENT OF TRANSPORTATION	SUPERSTRUCTURE DETAILS - REMOVAL FOR SN 050-0220 (E.B.)	F.A.I. RTE. =	SECTION	COUNTY	TOTAL SHEETS	SHEET NO.	
ca:\pwork\pawid\petaluj\02273391\036889-ahd-details.dgn		DRAWN - RON WOODSHANK	REVISED -			80	(50-2BR)	LASALLE	29	14	
PLOT SCALE = 1/8" = 1' / in.		CHECKED -	REVISED -			CONTRACT NO. 66889					
PLOT DATE = 2/16/2012		DATE -	REVISED -			ILLINOIS FED. AID PROJECT					

SCALE: SHEET 3 OF 9 SHEETS STA. 669+98.20 TO STA. 674+40.66