

STATE OF ILLINOIS
DEPARTMENT OF TRANSPORTATION

DIVISION OF HIGHWAYS

**PROPOSED
HIGHWAY PLANS**

F.A.P. ROUTE 623 (U.S. ROUTE 6)
SECTION (G-1) BR-2
PROJECT: F-0623(030)
SUPERSTRUCTURE REPLACEMENT
LASALLE COUNTY

C-93-125-09

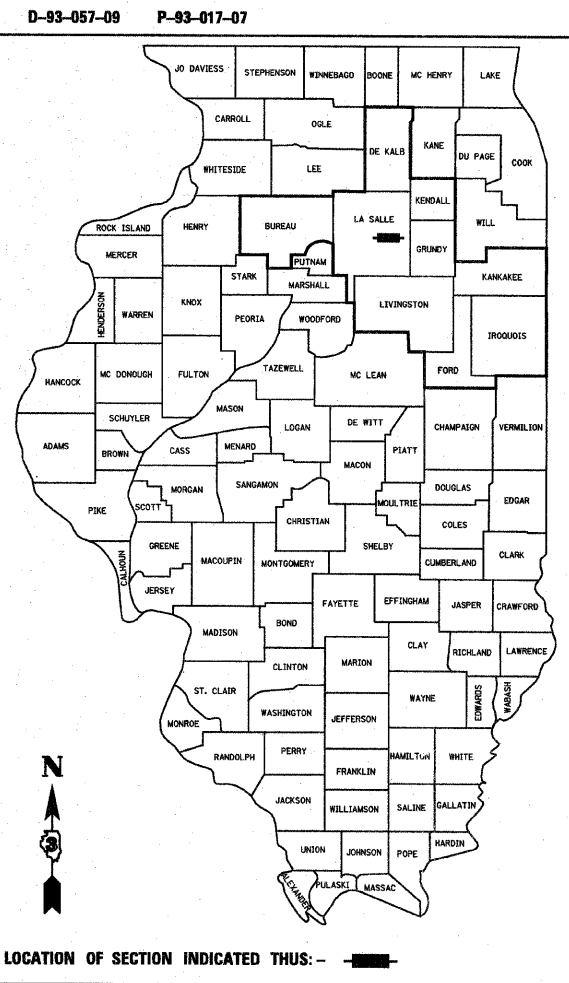
F.A.P. RTE.	SECTION	COUNTY	TOTAL SHEETS	SHEET NO.
623	(G-1) BR-2	LASALLE	48	1
ILLINOIS			CONTRACT NO. 66972	

* 48 + 1 = 49

INDEX OF SHEETS

- 1 COVER SHEET
- 2 HIGHWAY STANDARDS, GENERAL NOTES AND COMMITMENTS
- 3-4 SUMMARY OF QUANTITIES
- 5-6 TYPICAL SECTIONS
- 7-9 SCHEDULE OF QUANTITIES
- 10 ALIGNMENT AND BENCHMARKS
- 11 SURVEY TIES
- 12 PLAN & PROFILE SHEET
- 13 DETOUR PLAN
- 14 EROSION CONTROL PLAN
- 15 DRAINAGE PLAN & PROFILE SHEET
- 16 RIGHT-OF-WAY PLAN
- 16A INTERSECTION DETAIL PLAN
- 17-36 BRIDGE PLANS S.N. 050-0184
- 37-42 DETAILS
- 43-48 CROSS SECTIONS

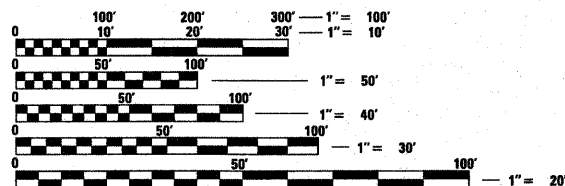
FOR LIST OF STANDARDS, SEE SHEET NO. 2



LOCATION OF SECTION INDICATED THUS: - ■ -

FUNCTIONAL CLASSIFICATION
RURAL MINOR ARTERIAL
(CLASS II TRUCK ROUTE)
2011 ADT = 3200

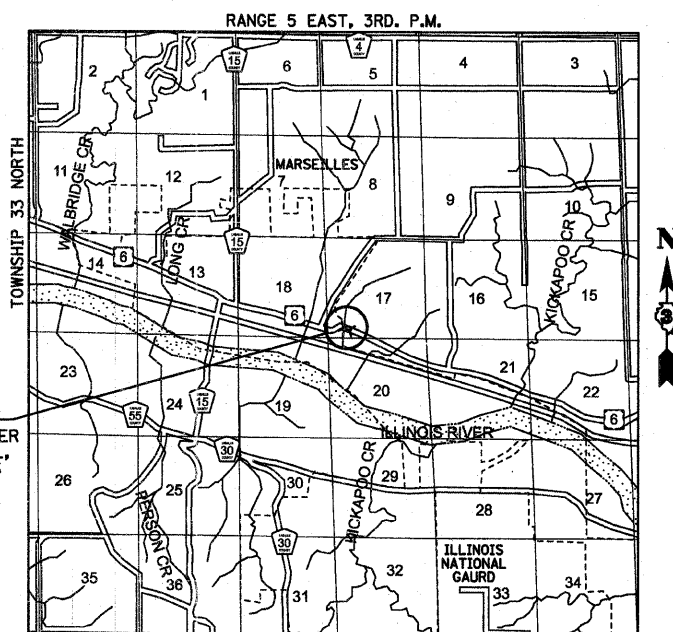
P.V. = 89.4% S.U. = 5.3% M.U. = 5.3%



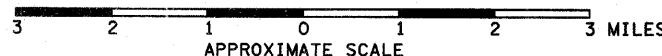
FULL SIZE PLANS HAVE BEEN PREPARED USING STANDARD ENGINEERING SCALES. REDUCED SIZED PLANS WILL NOT CONFORM TO STANDARD SCALES. IN MAKING MEASUREMENTS ON REDUCED PLANS, THE ABOVE SCALES MAY BE USED.

J.U.I.E.
JOINT UTILITY LOCATION INFORMATION FOR EXCAVATION
1-800-892-0123
OR 811

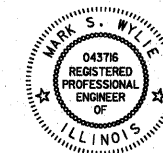
DISTRICT 3 NO. (815) 434-6131
PROJECT ENGINEER: JOE KANNEL, P.E.
UNIT CHIEF: PATRICK BRABOY
CONTRACT NO. 66972



LOCATION MAP



GROSS LENGTH = 435.0 FT. = 0.08 MILE
NET LENGTH = 435.0 FT. = 0.08 MILE



Mark S. Wylie Date 11/11/11
MARK S. WYLIE
REGISTERED PROFESSIONAL ENGINEER
NO. 062-043716
EXPIRATION 11/30/11

STATE OF ILLINOIS
DEPARTMENT OF TRANSPORTATION
DIVISION OF HIGHWAYS

SUBMITTED Feb 21 20 12
Edu S. Trudell
DEPUTY DIRECTOR OF HIGHWAYS, REGION ENGINEER

March 23 20 12
John D. Baranzelli, P.E.
acting ENGINEER OF DESIGN AND ENVIRONMENT

March 23 20 12
William R. Fry, Jr.
acting DIRECTOR OF HIGHWAYS, CHIEF ENGINEER

**PRINTED BY THE AUTHORITY
OF THE STATE OF ILLINOIS**