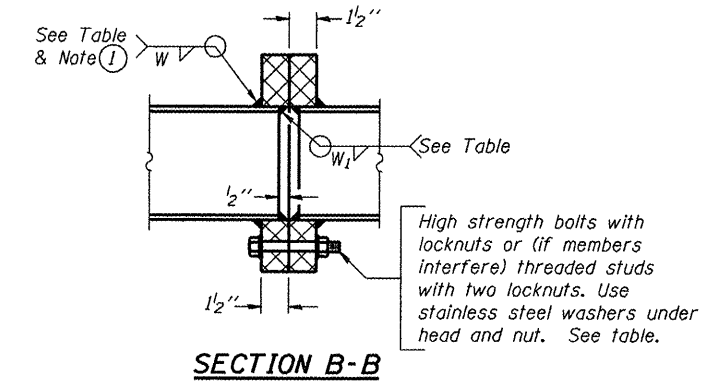
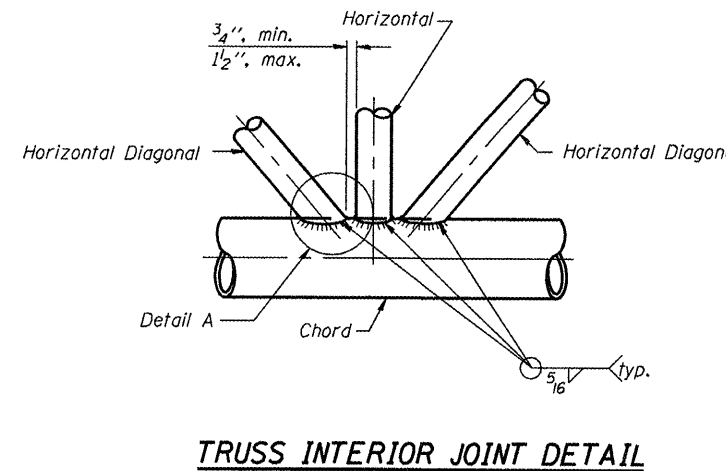
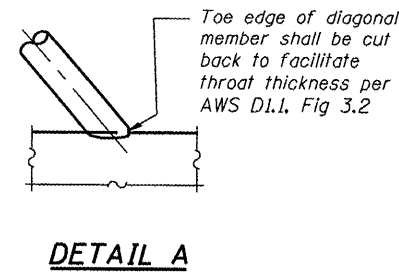
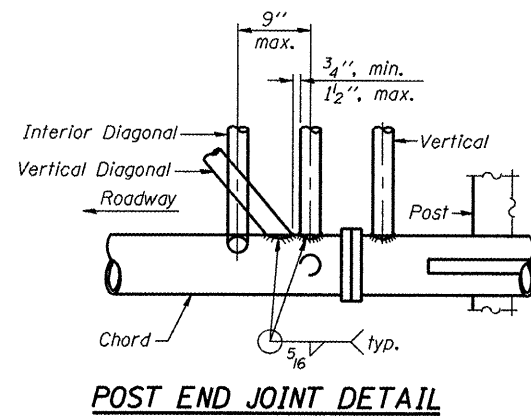
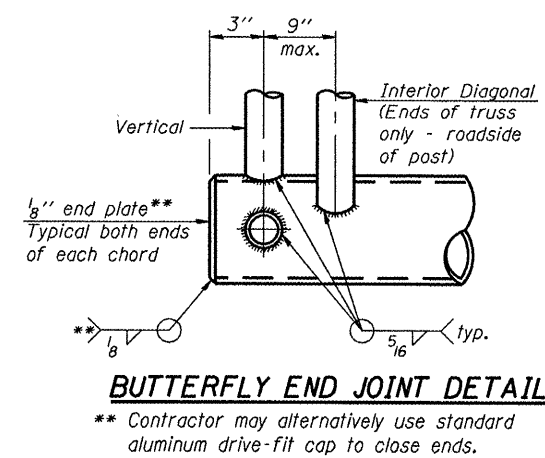
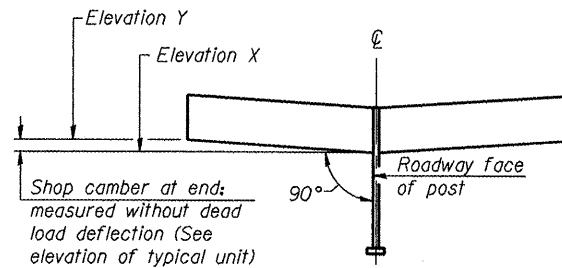
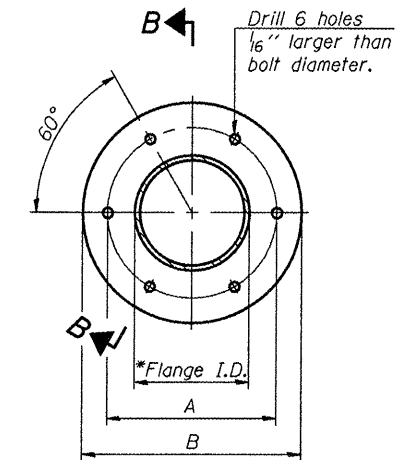
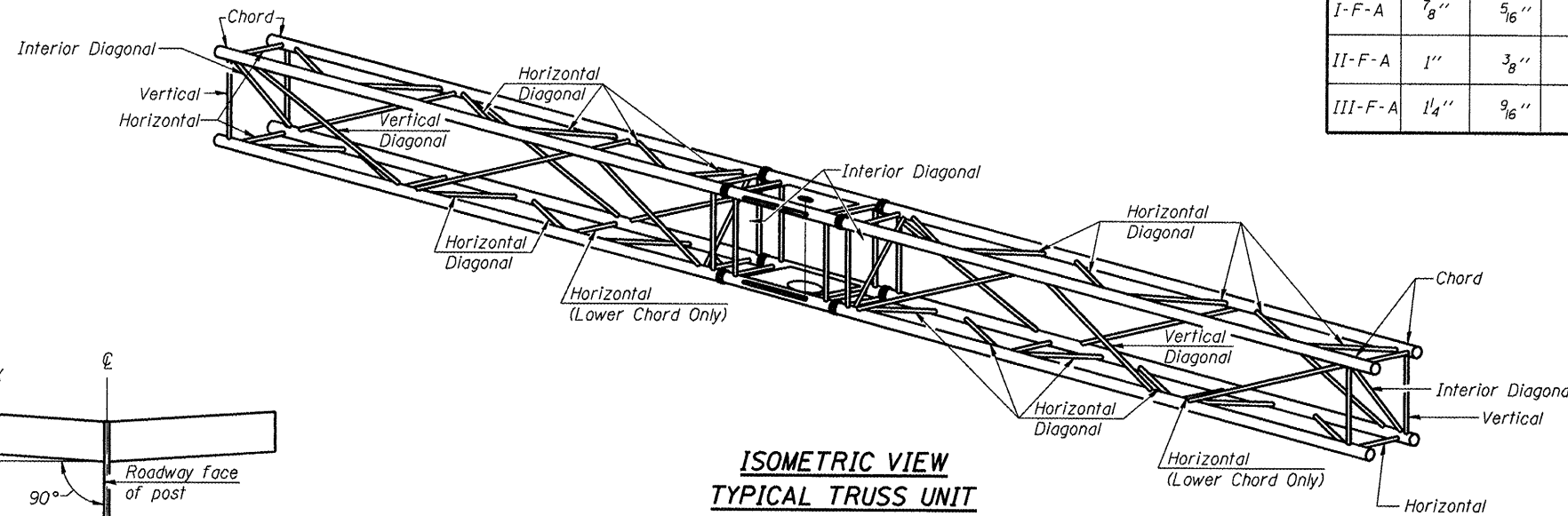


**SHOP CAMBER TABLE**

Unit Length L <sub>1</sub> or L <sub>2</sub>	Shop Camber at End
15'	1 1/2"
16'-17'	1 3/4"
18'-20'	2"
21'-22'	2 1/4"
23'-25'	2 1/2"
26'-27'	2 3/4"
28'-30'	3"
31'-32'	3 1/4"
33'-35'	3 1/2"

Truss Type	Bolts Dia.	Weld Sizes		A	B
		W	W <sub>1</sub>		
I-F-A	7/8"	5/16"	1/4"	8 3/4"	11 3/4"
II-F-A	1"	3/8"	1/4"	11"	14 1/2"
III-F-A	1 1/4"	9/16"	5/16"	11 1/2"	15"



① Splicing Flanges shall be attached to each truss unit with the truss shop assembled to camber shown. Truss units shall be in proper alignment and flange surfaces shall be shop bolted into full contact before welding. Sufficient external welds or tacks shall be made to secure flanges until remaining welds are made after disassembly. Adjacent flanges shall be "match marked" to insure proper field assembly.

OSF-A-2A

1-20-11

FILE NAME =	USER NAME = patelijj	DESIGNED -	REVISED -	<b>STATE OF ILLINOIS DEPARTMENT OF TRANSPORTATION</b>	<b>BUTTERFLY SIGN STRUCTURES - TRUSS DETAILS ALUMINUM TRUSS &amp; STEEL POST</b>	F.A.I. RTE.	SECTION	COUNTY	TOTAL SHEETS	SHEET NO.	
ci:\pw_work\pvidot\patelijj\d0250292\0366628-sht-details.DGN	PLOT SCALE = 99.9999 / in.	DRAWN -	REVISED -			VAR	D3 OVD MESSAGE SG - 2012	VAR	50	32	
PLOT DATE = 2/23/2012	DATE -	CHECKED -	REVISED -			SCALE: _____	SHEET NO. 1 OF 1 SHEETS	STA. _____ TO STA. _____	CONTRACT NO. 66B28		
		DATE -	REVISED -			[ILLINOIS]					