

F.A.P. RTE.	SECTION	COUNTY	TOTAL SHEETS	SHEET NO.
798	(107)I	FORD	10	1
ILLINOIS CONTRACT NO. 66B70				

STATE OF ILLINOIS
DEPARTMENT OF TRANSPORTATION
DIVISION OF HIGHWAYS

**PROPOSED
HIGHWAY PLANS**

FAP ROUTE 798 (IL 115)
SECTION (107)I

STRUCTURE SUPPORT MEASURES
STRUCTURE NO. 027-2506
CARRYING FAP ROUTE 798 (IL 115)
OVER UNNAMED STREAM
4.1 MILES SOUTH OF US ROUTE 24
FORD COUNTY

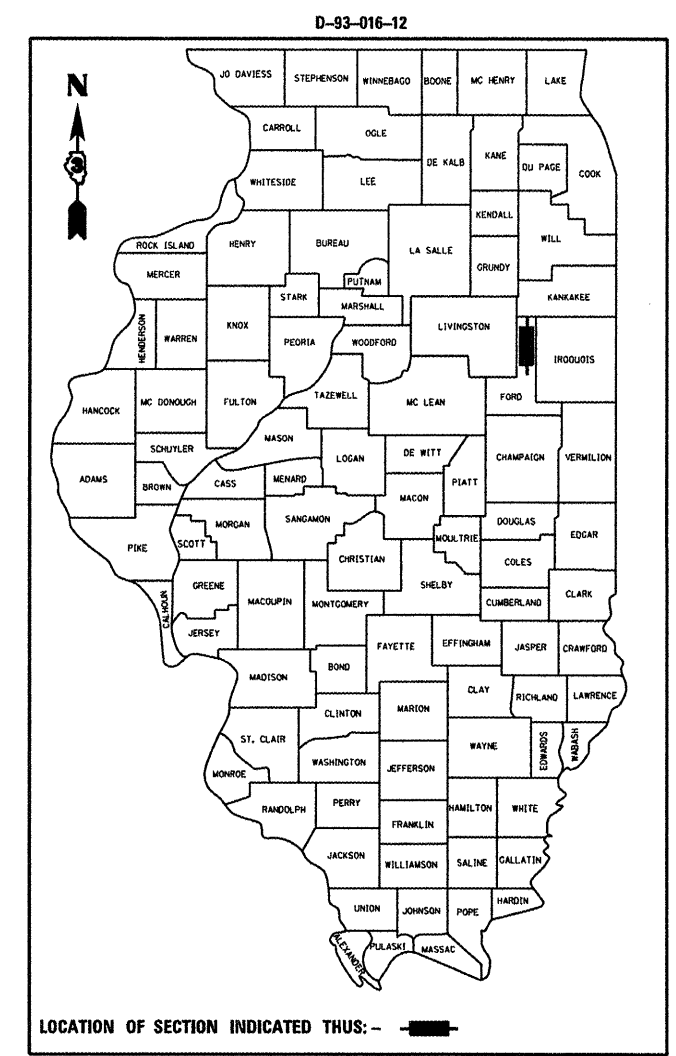
C-93-019-12

INDEX OF SHEETS

1. COVER SHEET
2. GENERAL NOTES
3. SUMMARY OF QUANTITIES
4. TYPICAL SECTIONS
- 5 - 6. STAGING DETAILS
7. WIDTH RESTRICTION SIGNING
8. ROADWAY DETAILS
9. GENERAL PLAN & REPAIR DETAILS
10. BAR SPLICER AND MECHANICAL SPLICER DETAILS

STANDARDS

- | | |
|-----------|--|
| 000001-06 | STANDARD SYMBOLS, ABBREVIATIONS AND PATTERNS |
| 001001-02 | AREAS OF REINFORCEMENT BARS |
| 001006 | DECIMAL OF AN INCH AND OF A FOOT |
| 701006-03 | OFF-ROAD OPERATIONS 2L, 2W, 15' (4.5 m) TO 24" (600 mm) FROM PAVEMENT EDGE |
| 701201-04 | LANE CLOSURE, 2L, 2W, DAY ONLY, FOR SPEEDS \geq 45 MPH |
| 701301-04 | LANE CLOSURE, 2L, 2W, SHORT TIME OPERATIONS |
| 701311-03 | LANE CLOSURE, 2L, 2W, MOVING OPERATIONS - DAY ONLY |
| 701316-06 | LANE CLOSURE, 2L, 2W, BRIDGE REPAIR, FOR SPEEDS \geq 45 MPH |
| 701901-02 | TRAFFIC CONTROL DEVICES |



LOCATION OF SECTION INDICATED THUS: - ■ -

RURAL	
MINOR ARTERIAL	
FAP 798 (IL 115)	
2011	
ADT	550
P.V.	87.27%
S.U.	3.64%
M.U.	9.09%

STATE OF ILLINOIS
DEPARTMENT OF TRANSPORTATION
DIVISION OF HIGHWAYS

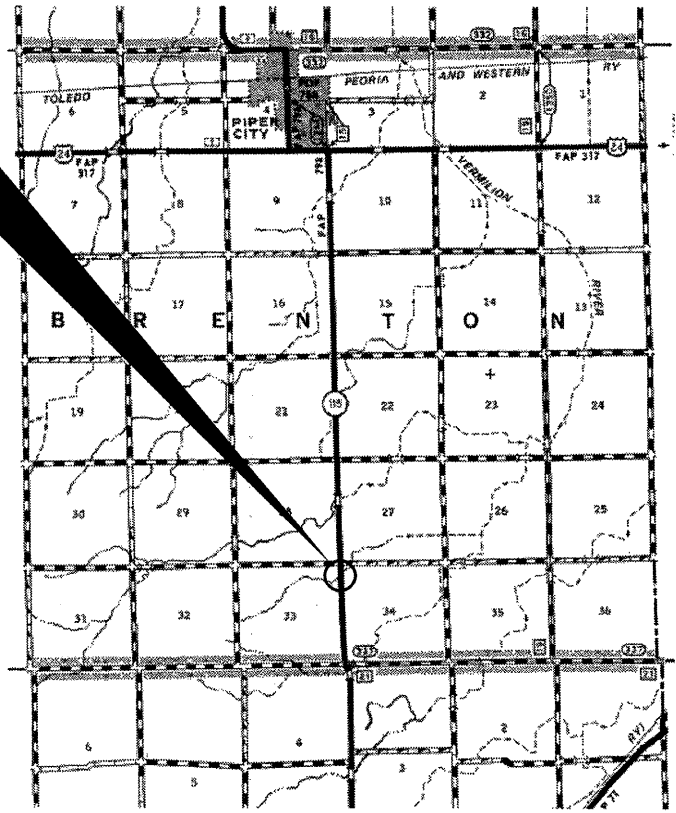
SUBMITTED 2-16 2012
Eric S. Therkaldsen
DEPUTY DIRECTOR OF HIGHWAYS, REGION ENGINEER

March 23 2012
John D. Baranzelli, P.E.
ENGINEER OF DESIGN AND ENVIRONMENT

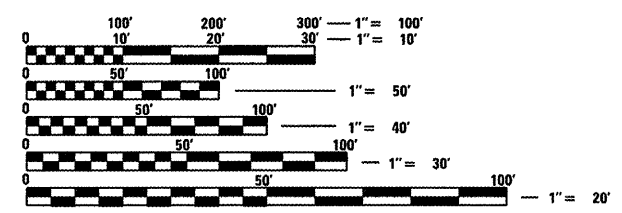
March 23 2012
William R. Frey, Jr.
DIRECTOR OF HIGHWAYS, CHIEF ENGINEER

PRINTED BY THE AUTHORITY
OF THE STATE OF ILLINOIS

PROJECT LOCATION
STRUCTURE NO. 027-2506



GROSS LENGTH = 15.5 FT. = 0.003 MILE
NET LENGTH = 15.5 FT. = 0.003 MILE



FULL SIZE PLANS HAVE BEEN PREPARED USING STANDARD ENGINEERING SCALES. REDUCED SIZED PLANS WILL NOT CONFORM TO STANDARD SCALES. IN MAKING MEASUREMENTS ON REDUCED PLANS, THE ABOVE SCALES MAY BE USED.

J.U.L.I.E.
JOINT UTILITY LOCATION INFORMATION FOR EXCAVATION
1-800-892-0123
OR 811

DISTRICT NO. 3 (815) 434-6131

PROJECT ENGINEER: JOE KANNEL P.E.
UNIT CHIEF: RON WOODSHANK
TOWNSHIP: BRENTON

CONTRACT NO. 66B70