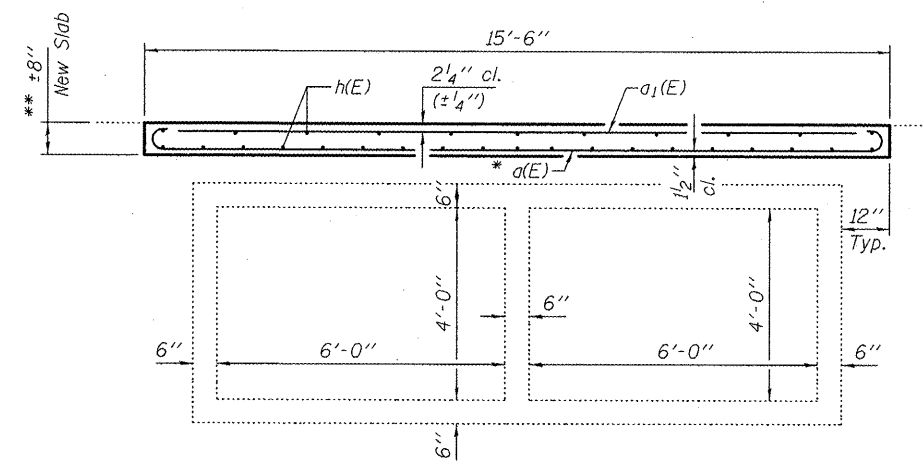


LONGITUDINAL SECTION A-A

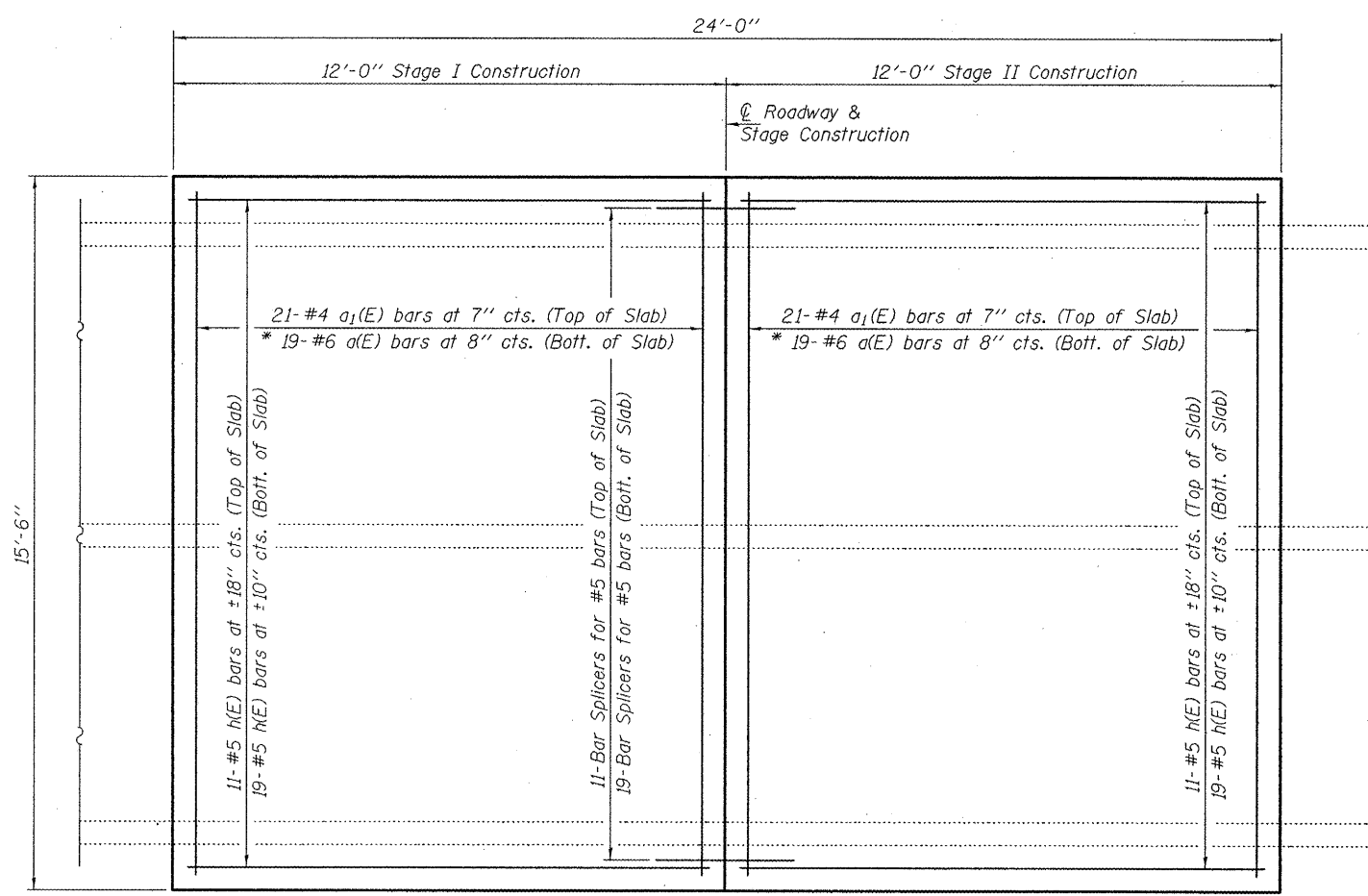


SECTION A-A

- * Tilt hook of a(E) bars if necessary to maintain clearance.
- ** Remove 8" of existing overlay and replace with 8" concrete slab as shown. Removal is to be limited to the 8" shown. Slope to match roadway. Cost of removal included with Hot-Mix Asphalt Surface Removal.

GENERAL NOTES

Plan dimensions and details relative to existing plans are subject to nominal construction variations. The Contractor shall field verify existing dimensions and details affecting new construction and make necessary approved adjustments prior to construction or ordering of materials. Such variations shall not be cause for additional compensation for a change in scope of the work, however, the Contractor will be paid for the quantity actually furnished at the unit price bid for the work. Reinforcement bars designated (E) shall be epoxy coated. The slab surface shall have its final finish tined according to Article 420.09(e)(1) of the Standard Specifications. Cost included with Concrete Superstructure.



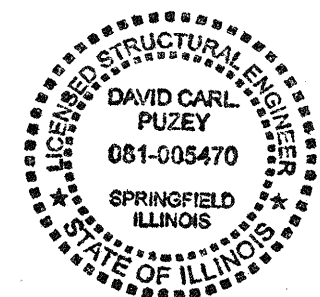
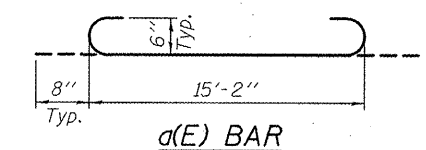
PLAN

DESIGN STRESSES

FIELD UNITS
 $f'c = 3,500 \text{ psi}$
 $f_y = 60,000 \text{ psi (Reinf.)}$

BILL OF MATERIAL

Bar	No.	Size	Length	Shape
a(E)	38	#6	16'-6"	U
a1(E)	42	#4	15'-2"	—
h(E)	60	#5	11'-8"	—
Bar Splicers			Each	30
Hot-Mix Asphalt Surface Removal			Sq. Yd.	41.3
Reinforcement Bars, Epoxy Coated			Pound	2,100
Concrete Superstructure			Cu. Yd.	9.2



DESIGNED	EXAMINED	DATE	MARCH 16, 2012
CHECKED	PASSED		
DRAWN			
CHECKED			

STATE OF ILLINOIS
 DEPARTMENT OF TRANSPORTATION

GENERAL PLAN & REPAIR DETAILS
 ILLINOIS ROUTE 115 OVER STREAM
 SN 027-2506
 SHEET NO. 1 OF 2 SHEETS

F.A.P. RTE.	SECTION	COUNTY	TOTAL SHEETS	SHEET NO.
798	(107)I	FORD	10	9
CONTRACT NO. 66870				
ILLINOIS FED. AID PROJECT				