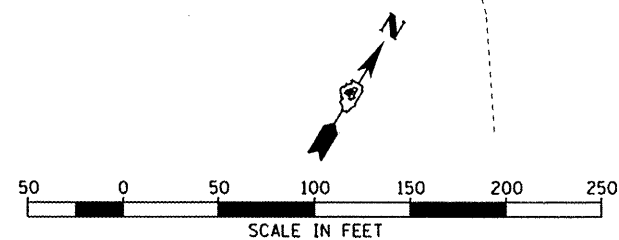
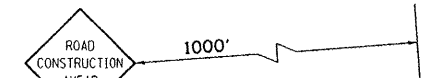
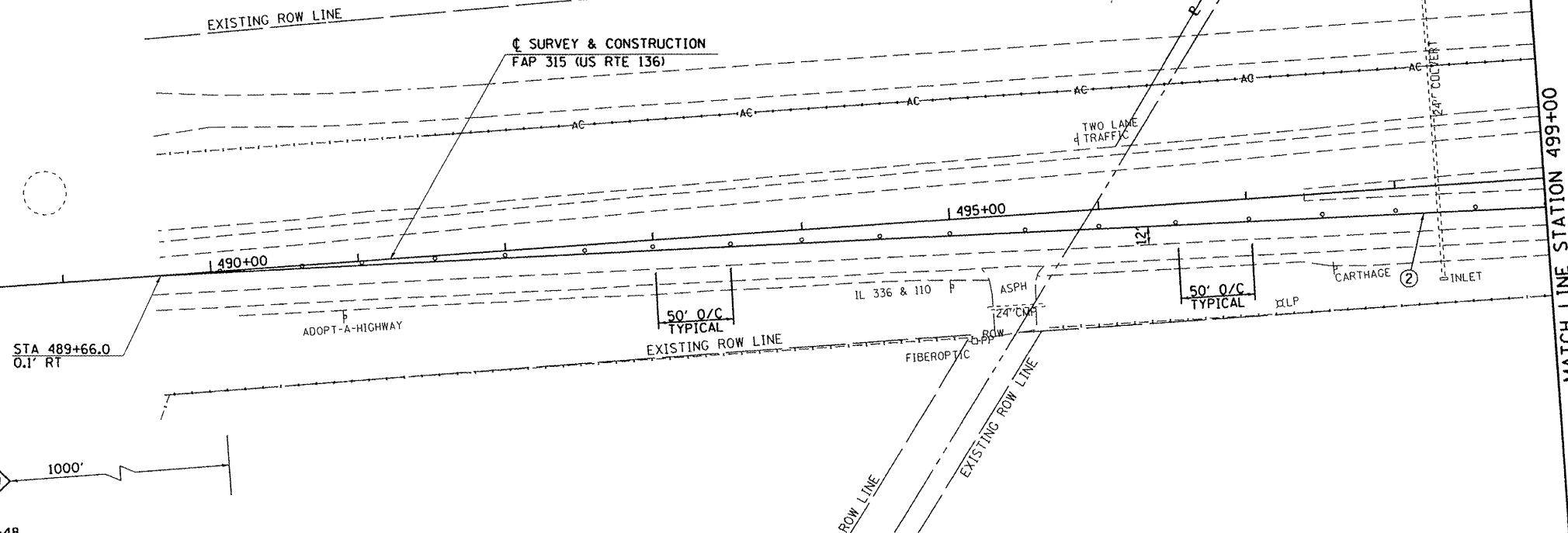


SEC 4, T 5 N, R 3 W, 4th PM



SCALE IN FEET

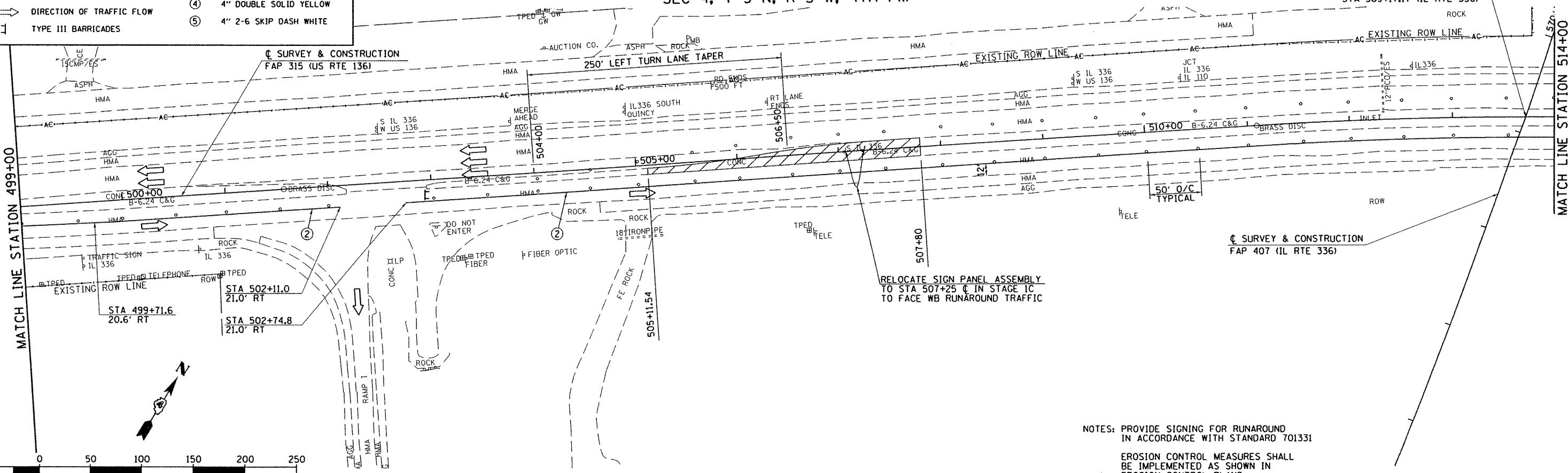


W20-1103(O)-48

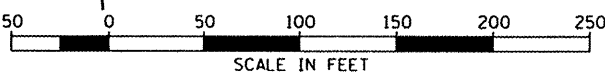
LEGEND		TEMPORARY PAVEMENT MARKING LEGEND	
	WORK AREA	①	4" SOLID YELLOW
	SIGN	②	4" SOLID WHITE
	DRUM WITH STEADY BURNING MONODIRECTIONAL LIGHT	③	6" SOLID WHITE
	DIRECTION OF TRAFFIC FLOW	④	4" DOUBLE SOLID YELLOW
	TYPE III BARRICADES	⑤	4" 2-6 SKIP DASH WHITE

SEC 4, T 5 N, R 3 W, 4th PM

STA 513+71.26 (US RTE 136) =
STA 569+17.17 (IL RTE 336)



RELOCATE SIGN PANEL ASSEMBLY TO STA 507+25 IN STAGE 1C TO FACE WB RUNAROUND TRAFFIC



SCALE IN FEET

NOTES: PROVIDE SIGNING FOR RUNAROUND IN ACCORDANCE WITH STANDARD 701331
EROSION CONTROL MEASURES SHALL BE IMPLEMENTED AS SHOWN IN EROSION CONTROL PLANS.

FILE NAME =	USER NAME = tdarr	DESIGNED -	REVISED -	STATE OF ILLINOIS DEPARTMENT OF TRANSPORTATION	FAP 315 (US RTE 136) MAINTENANCE OF TRAFFIC PLAN - STAGES 1C & 3C	F.A.P. RTE.	SECTION	COUNTY	TOTAL SHEETS	SHEET NO.	
v:\transportation\2891\us136plans\US136M\T03.dgn	PLOT SCALE = 100.00' / IN.	DRAWN -	REVISED -			315	55-3HB	McDONOUGH	103	18	
PLOT DATE = 8/23/2011	DATE -	CHECKED -	REVISED -			SCALE: 1"=50'		SHEET NO. OF SHEETS STA. 486+00 TO STA. 514+00		CONTRACT NO. 68A40	
						ILLINOIS FED. AID PROJECT					