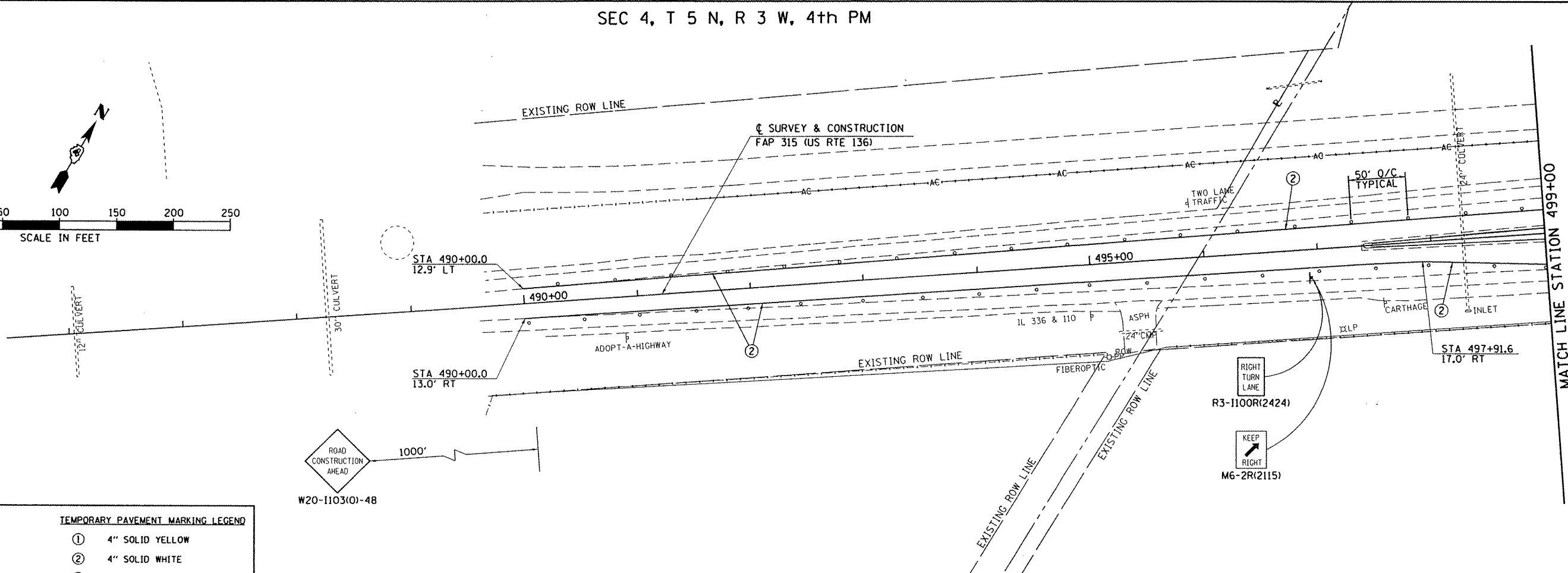
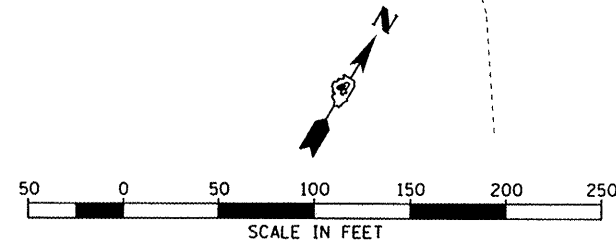
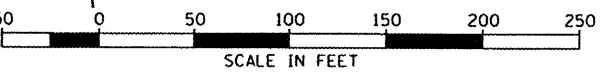
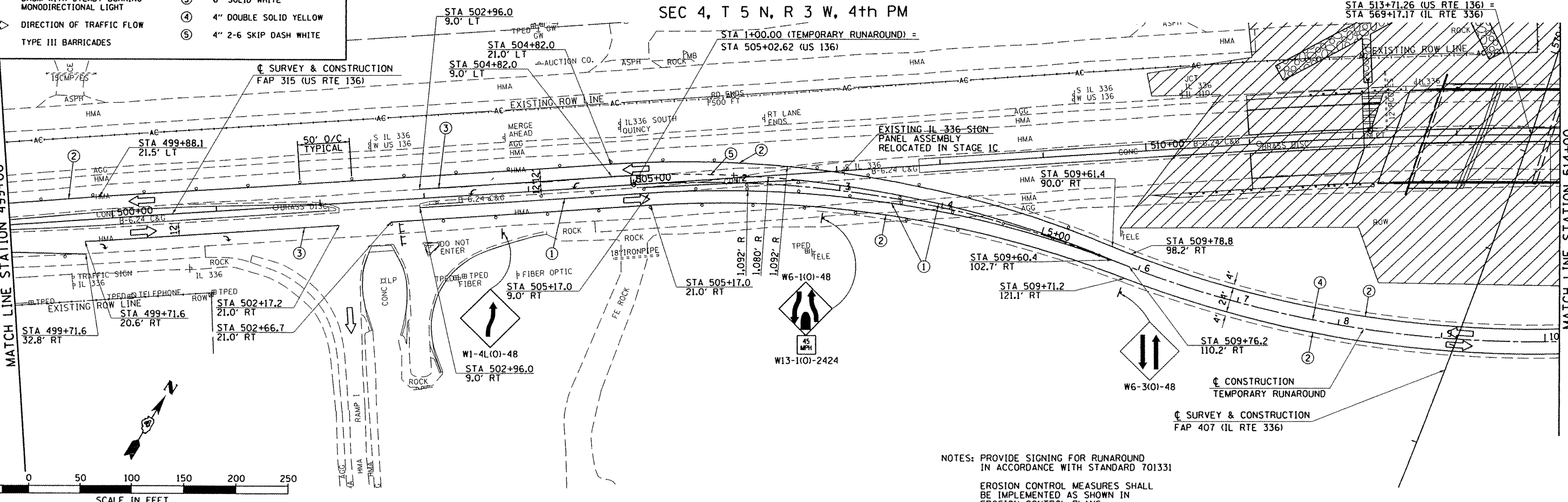


SEC 4, T 5 N, R 3 W, 4th PM



LEGEND		TEMPORARY PAVEMENT MARKING LEGEND	
	WORK AREA	①	4" SOLID YELLOW
	SIGN	②	4" SOLID WHITE
	DRUM WITH STEADY BURNING MONODIRECTIONAL LIGHT	③	6" SOLID WHITE
	DIRECTION OF TRAFFIC FLOW	④	4" DOUBLE SOLID YELLOW
	TYPE III BARRICADES	⑤	4" 2-6 SKIP DASH WHITE

SEC 4, T 5 N, R 3 W, 4th PM



NOTES: PROVIDE SIGNING FOR RUNAROUND IN ACCORDANCE WITH STANDARD 701331
EROSION CONTROL MEASURES SHALL BE IMPLEMENTED AS SHOWN IN EROSION CONTROL PLANS.

FILE NAME = v:\transportation\2891\us136plans\US136M105.dgn	USER NAME = tdarr	DESIGNED -	REVISED -	STATE OF ILLINOIS DEPARTMENT OF TRANSPORTATION	FAP 315 (US RTE 136) MAINTENANCE OF TRAFFIC PLAN - STAGE 2		F.A.P. RTE. = 315	SECTION = 55-3HB	COUNTY = MCDONOUGH	TOTAL SHEETS = 103	SHEET NO. = 20	
PLOT SCALE = 1/8" = 1' IN.	CHECKED -	REVISED -	REVISED -		SCALE: 1" = 50'	SHEET NO. OF SHEETS	STA. 486+00 TO STA. 514+00	CONTRACT NO. 68A40				
PLOT DATE = 8/23/2011	DATE -	REVISED -	REVISED -		ILLINOIS FED. AID PROJECT							