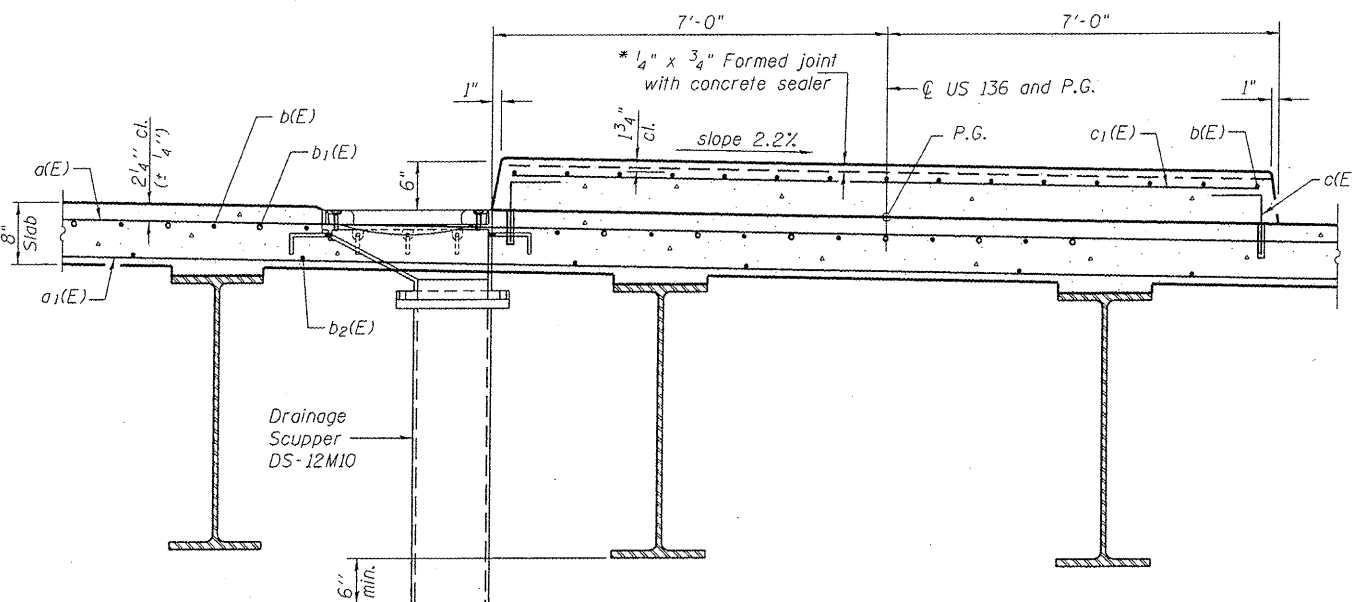


SPAN 1

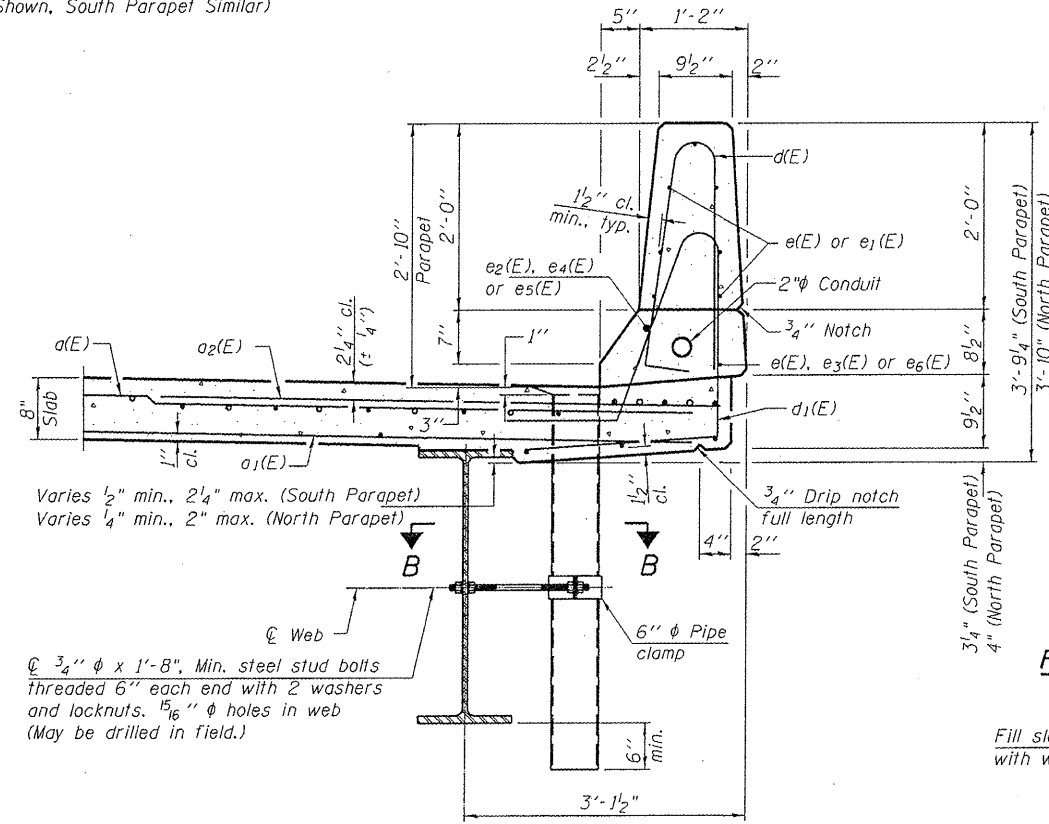
SPAN 2

**MINIMUM BAR LAP**  
(Parapet)  
#4 bar = 2'-0"  
#8 bar = 5'-2"

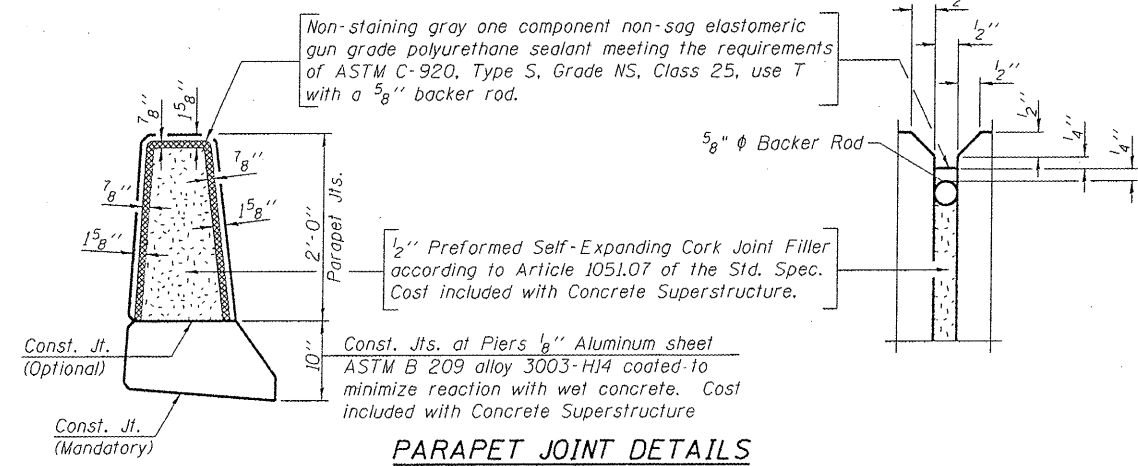
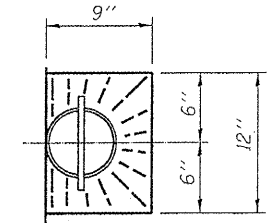
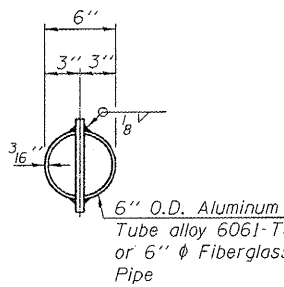
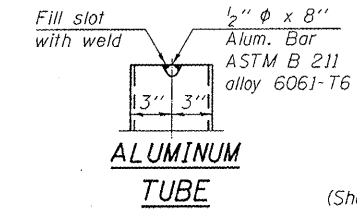
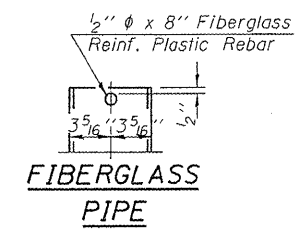
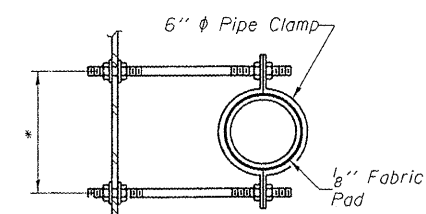
\* Full width along joint - backer rod not required. Cost included with Concrete Superstructure.



SECTION THRU MEDIAN



SECTION THRU PARAPET



**Notes:**  
The exterior surfaces of the floor drains shall be painted with the finish coat as specified in the special provisions for Cleaning and Painting New Metal Structures. The exterior surfaces of the drains shall be cleaned according to Society of Protective Coatings Spec. SSPC-SP1 prior to painting.  
Fiberglass pipe shall conform to ASTM D 2996, with short-time rupture strength hoop tensile stress of 30,000 p.s.i. minimum.  
Galvanize clamping device according to AASHTO M232. Cost of clamping device and inserts is included with Floor Drains.

**Hutchison Engineering, Inc.**  
Jacksonville & Shorewood, Illinois

USER NAME = tcopy	DESIGNED - CTM	REVISED -
PLOT SCALE = NONE	CHECKED - BAN	REVISED -
PLOT DATE = 8/22/2011	DRAWN - TAC	REVISED -
	CHECKED - CTM/BAN	REVISED -

**STATE OF ILLINOIS**  
**DEPARTMENT OF TRANSPORTATION**

**SUPERSTRUCTURE DETAILS**  
**STRUCTURE NO. 055-0063**

F.A.P. RTE. 315	SECTION 55-3HB	COUNTY McDonough	TOTAL SHEETS 103	SHEET NO. 42
CONTRACT NO. 68A40				
ILLINOIS FED. AID PROJECT				

SHEET NO. 11 OF 35 SHEETS