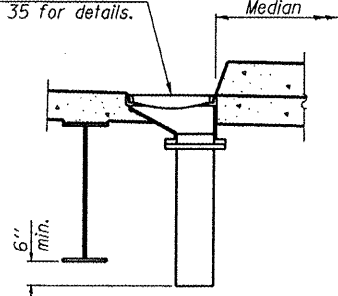
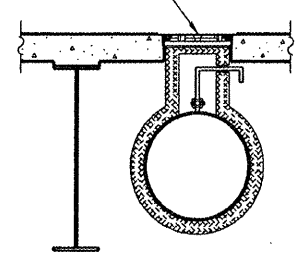


Drainage Scupper, DS-12M10  
See sheets 19 of 35 for details.



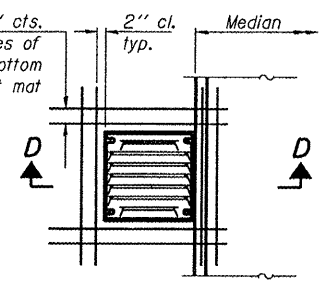
**SECTION D-D**

See Roadway Plans For details



**SECTION E-E**

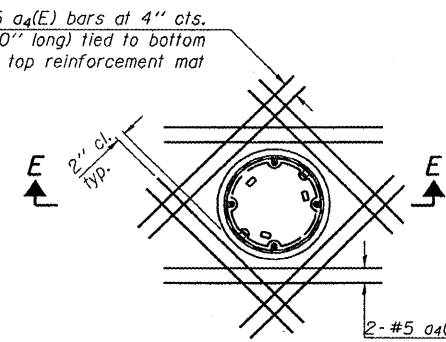
2- #5 #4(E) bars at 4" cts.  
(4'-0" long-4 faces of  
scupper) tied to bottom  
of top reinforcement mat



**PLAN**

Note:  
Cut longitudinal reinforcement to  
clear drainage scuppers.

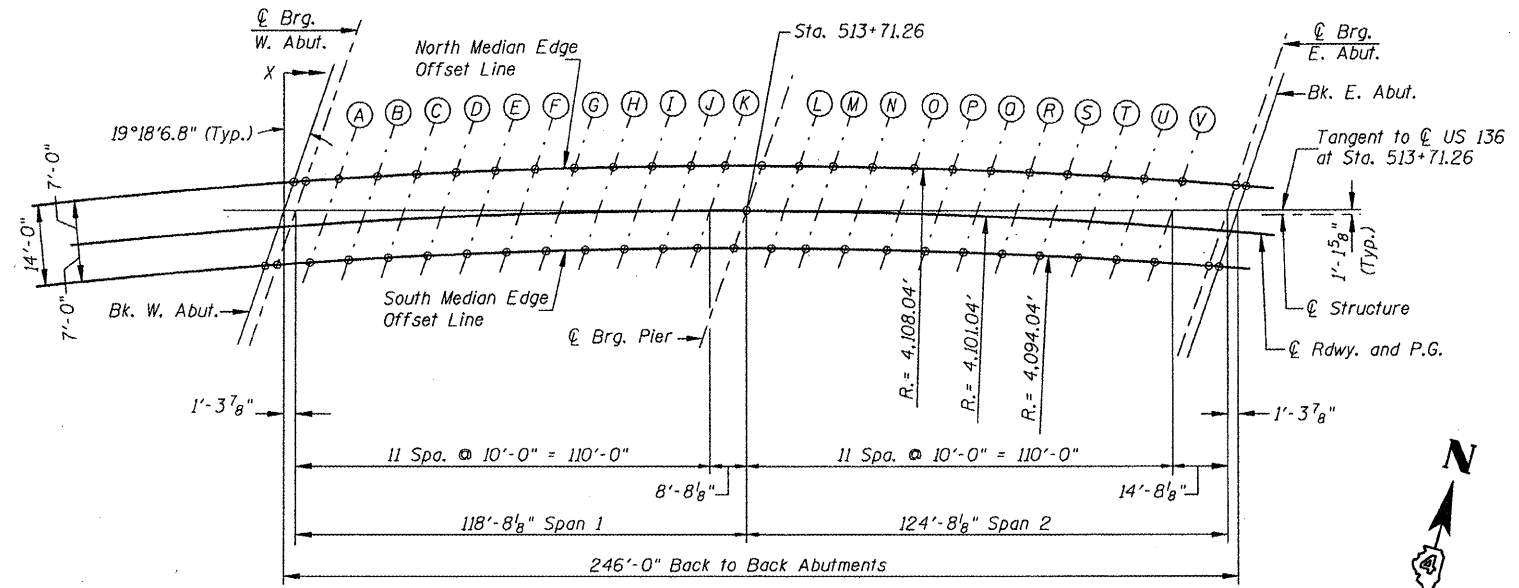
2- #5 #4(E) bars at 4" cts.  
(4'-0" long) tied to bottom  
of top reinforcement mat



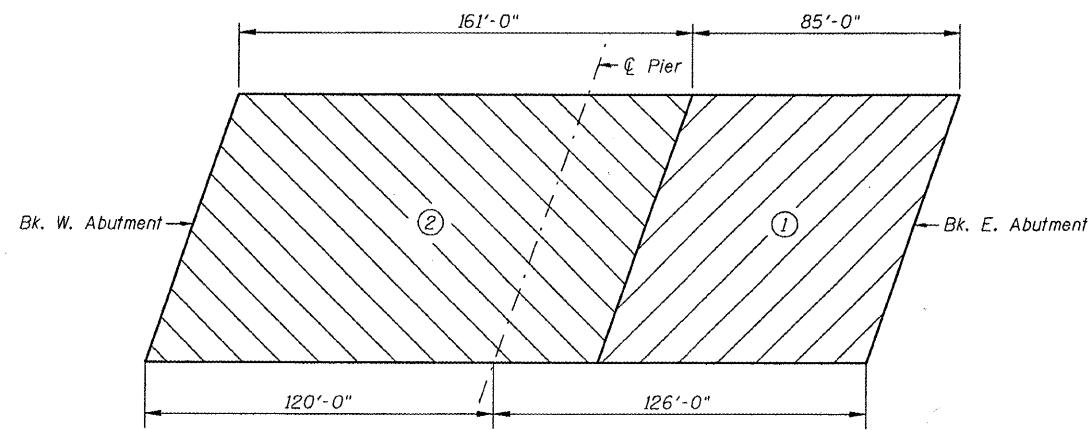
**PLAN**

Note:  
Cut longitudinal reinforcement to  
clear valve access.

2- #5 #4(E) bars at 4" cts.  
tied to top of bottom  
reinforcement mat



**MEDIAN OFFSET PLAN**



**DECK POURING SEQUENCE**

Note:  
When the deck pour is stopped for the day at one or more of the transverse  
bonded construction joints in the deck pouring sequence as shown, the next  
pour shall not be made until both of the following are met:  
1) At least 72 hours shall have elapsed from the end of the previous  
pour.  
2) The concrete strength shall have attained a minimum flexural  
strength of 650 psi or a minimum compressive strength of 3500 psi.

**MEDIAN OFFSETS**

Location	NORTH		SOUTH	
	X	*Offset (ft)	X	*Offset (ft)
Bk. W. Abut.	1.86	-5.30	-3.10	8.85
¢ Brg. W. Abut.	3.19	-5.34	-1.76	8.81
A	13.29	-5.61	8.34	8.52
B	23.38	-5.86	18.43	8.26
C	33.46	-6.09	28.52	8.02
D	43.53	-6.29	38.59	7.81
E	53.59	-6.46	48.66	7.62
F	63.64	-6.61	58.71	7.46
G	73.68	-6.74	68.76	7.32
H	83.72	-6.84	78.80	7.21
I	93.75	-6.92	88.83	7.12
J	103.77	-6.97	98.85	7.05
K	113.77	-7.00	108.87	7.02
¢ Brg. Pier	122.45	-7.00	117.55	7.00
L	132.45	-6.98	127.55	7.01
M	142.43	-6.94	137.54	7.04
N	152.41	-6.87	147.52	7.09
O	162.38	-6.78	157.49	7.17
P	172.33	-6.67	167.45	7.28
Q	182.29	-6.53	177.41	7.40
R	192.23	-6.37	187.35	7.55
S	202.16	-6.18	197.29	7.73
T	212.09	-5.97	207.22	7.93
U	222.01	-5.73	217.15	8.15
V	231.92	-5.48	227.06	8.40
¢ Brg. E. Abut.	246.45	-5.05	241.59	8.81
Bk. E. Abut.	247.76	-5.01	242.90	8.85

\* Offset distance measured from local tangent

**Hutchison Engineering, Inc.**  
Jacksonville & Shorewood, Illinois

USER NAME = bnebel  
PLOT SCALE = NONE  
PLOT DATE = 10/21/2011

DESIGNED - CTM  
CHECKED - BAN  
DRAWN - TAC  
CHECKED - CTM/BAN

REVISED -  
REVISED -  
REVISED -  
REVISED -

**STATE OF ILLINOIS**  
**DEPARTMENT OF TRANSPORTATION**

**SUPERSTRUCTURE DETAILS**  
**STRUCTURE NO. 055-0063**

SHEET NO. 12 OF 35 SHEETS

F.A.P. RTE.	SECTION	COUNTY	TOTAL SHEETS	SHEET NO.
315	55-3HB	McDonough	103	43
CONTRACT NO. 68A40			ILLINOIS FED. AID PROJECT	