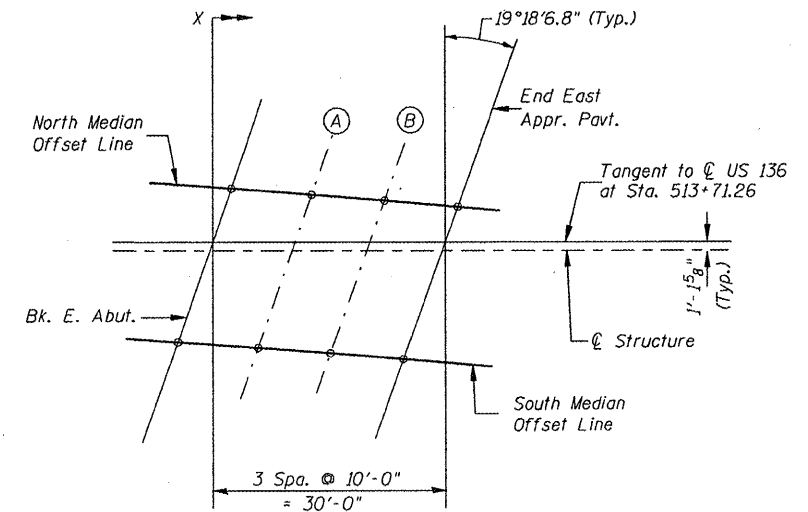
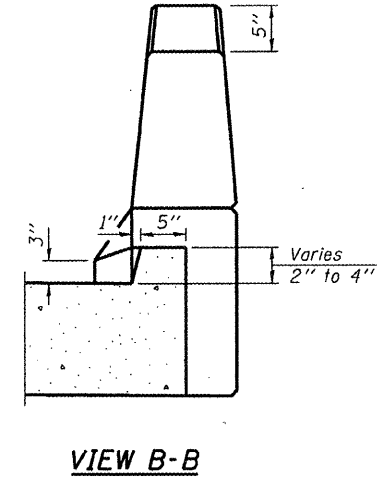
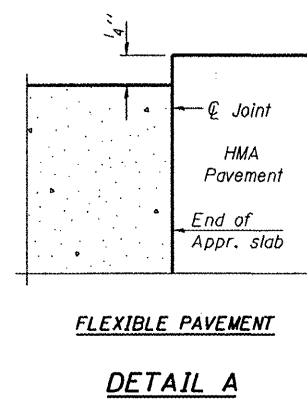


Notes:  
 \* Tilt #9 b<sub>5</sub>(E) bars as required to maintain clearance.  
 \*\* Space between a<sub>4</sub>(E) bars, typ. each parapet.  
 See sheet 18 of 35 for Sections C-C & D-D and View E-E.  
 a<sub>4</sub>(E), a<sub>5</sub>(E) and a<sub>6</sub>(E) bar spacings measured along  $\phi$  Approach Pavement.  
 See sheet 2 of 35 for offset sketch.



MEDIAN OFFSETS

Location	NORTH		SOUTH	
	X	*Offset (ft)	X	*Offset (ft)
End E. Appr. Pav't.	1.76	-5.01	-3.10	8.85
A	11.64	-4.69	6.79	9.15
B	21.52	-4.35	16.68	9.49
Bk. E. Abut.	31.40	-3.98	26.55	9.84

\* Offset distance measured from local tangent to  $\phi$  US 136 at Station 513+71.26.

(Sheet 1 of 2)

Hutchinson Engineering, Inc.  
 Jacksonville & Shorewood, Illinois

USER NAME = brnebel  
 PLOT SCALE = NONE  
 PLOT DATE = 10/21/2011

DESIGNED - CTM  
 CHECKED - BAN  
 DRAWN - TAC  
 CHECKED - CTM/BAN

REVISED -  
 REVISED -  
 REVISED -  
 REVISED -

STATE OF ILLINOIS  
 DEPARTMENT OF TRANSPORTATION

EAST BRIDGE APPROACH SLAB DETAILS  
 STRUCTURE NO. 055-0063

SHEET NO. 17 OF 35 SHEETS

F.A.P. RTE.	SECTION	COUNTY	TOTAL SHEETS	SHEET NO.
315	55-3HB	McDonough	103	48
CONTRACT NO. 68A40			ILLINOIS FED. AID PROJECT	