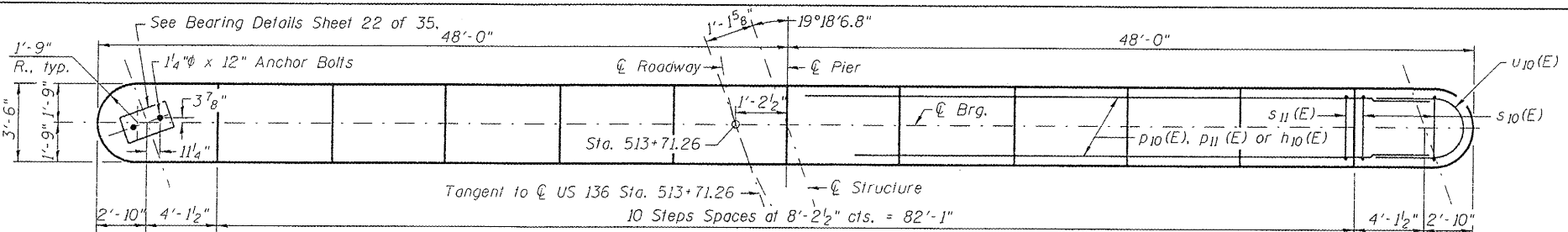
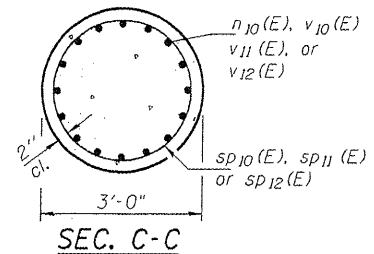
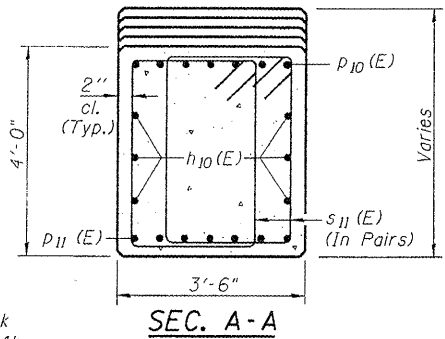


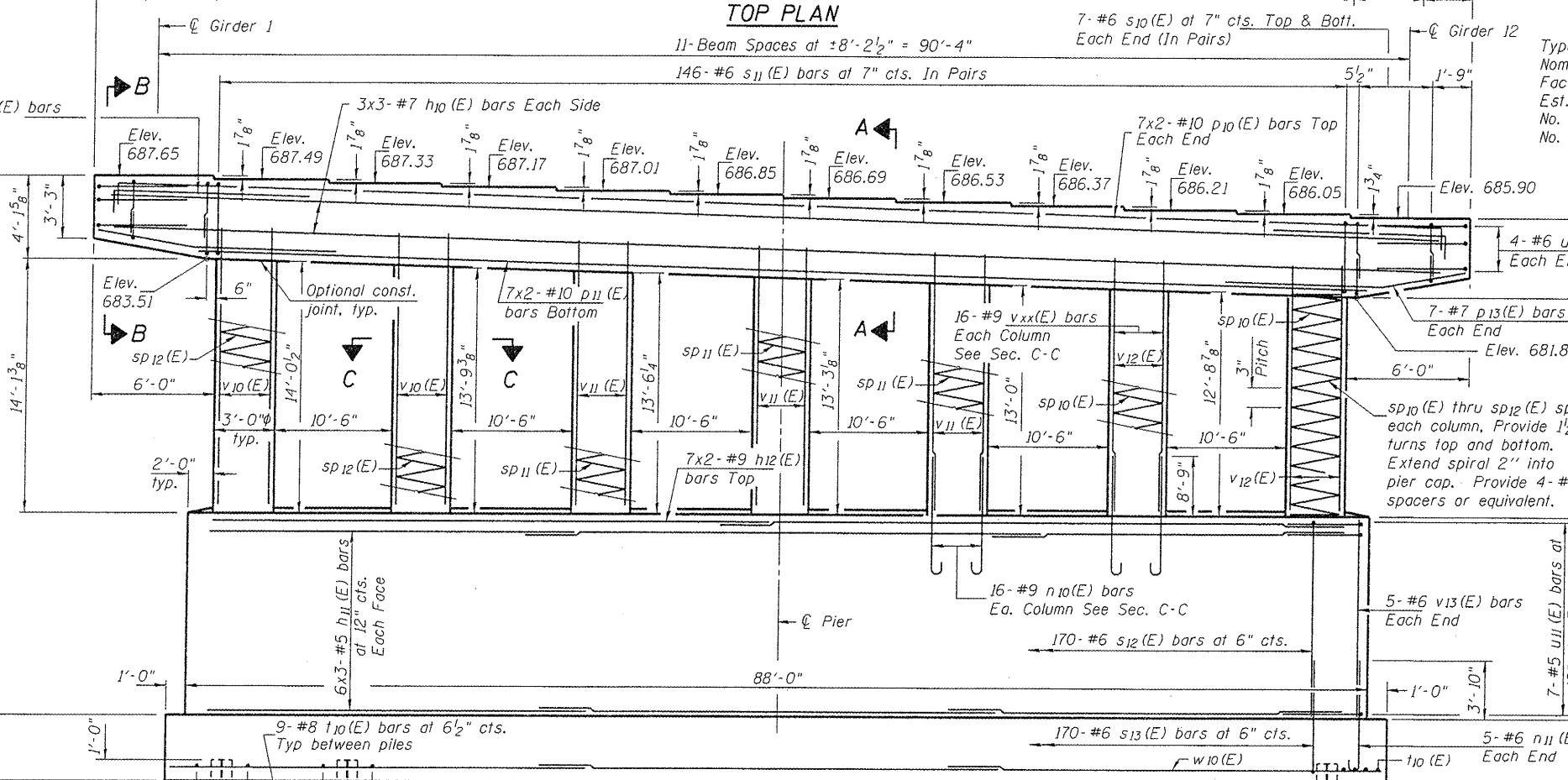
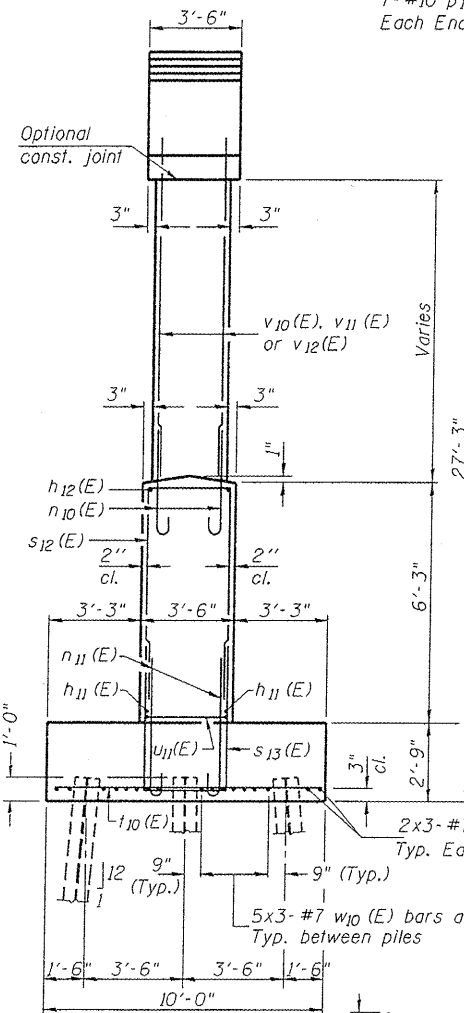
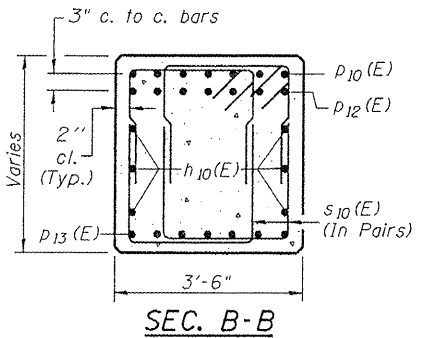
Notes:  
 Space reinforcement in cap to miss anchor bolts.  
 Pour steps monolithically with cap.  
 For details of piles, see sheet 28 of 35.



**MIN. BAR LAP**  
 #5 bar = 3'-3"  
 #6 bar = 3'-10"  
 #7 bar = 5'-2"  
 #9 bar = 8'-7"  
 #10 bar = 12'-4"



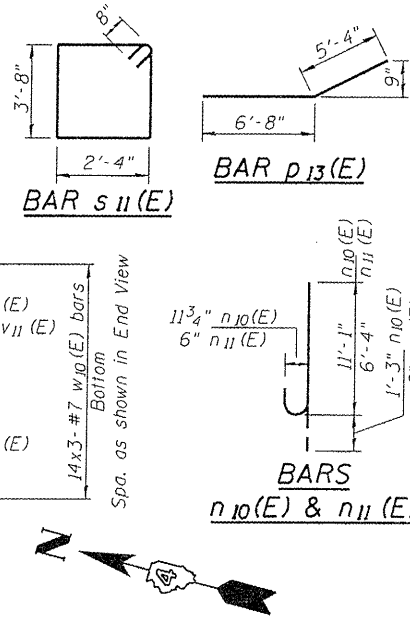
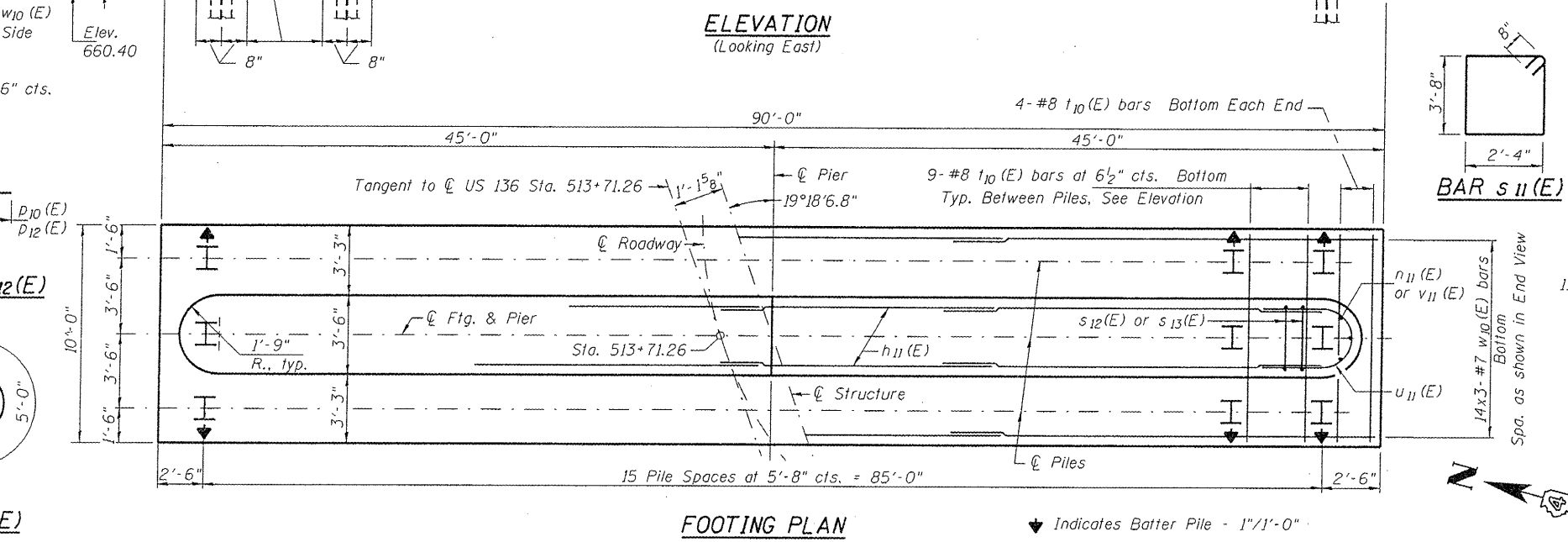
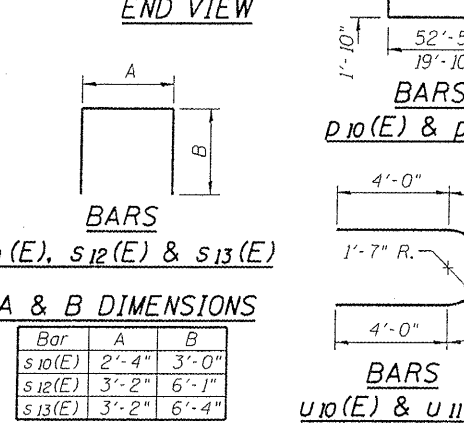
**PILE DATA**  
 Type: HP 12x53  
 Nominal Required Bearing: 390k  
 Factored Resistance Avail.: 214k  
 Est. Length: 43'  
 No. Production Piles: 47  
 No. Test Piles: 1



**BILL OF MATERIAL**

Bar	No.	Size	Length	Shape
h10(E)	18	#7	34'-4"	—
h11(E)	36	#5	30'-4"	—
h12(E)	14	#9	47'-0"	—
n10(E)	112	#9	12'-4"	U
n11(E)	10	#6	7'-0"	U
p10(E)	14	#10	54'-3"	—
p11(E)	14	#10	48'-8"	—
p12(E)	14	#10	21'-8"	—
p13(E)	14	#7	12'-0"	—
s10(E)	56	#6	8'-4"	U
s11(E)	292	#6	13'-4"	U
s12(E)	170	#6	15'-4"	U
s13(E)	170	#6	15'-10"	U
sp10(E)	2	#4	13'-1"	W
sp11(E)	3	#4	13'-11"	W
sp12(E)	2	#4	14'-5"	W
u10(E)	143	#8	9'-8"	—
u11(E)	8	#6	13'-0"	—
u12(E)	14	#5	13'-0"	—
v10(E)	32	#9	17'-1"	—
v11(E)	48	#9	16'-7"	—
v12(E)	32	#9	15'-9"	—
v13(E)	10	#6	5'-11"	—
w10(E)	42	#7	33'-4"	—
Structure Excavation	CU YD		322	
Concrete Structures	CU YD		237.2	
Reinforcement Bars, Epoxy Coated	POUND		47,230	
Furnishing Steel Piles, HP12x53	FOOT		2,021	
Driving Piles	FOOT		2,021	
Test Pile, HP12x53	EACH		1	

\*\* Length is height of spiral.



Hutchison Engineering, Inc.  
 Jacksonville & Shorewood, Illinois

USER NAME = tcdy	DESIGNED - BAN	REVISED -
PLOT SCALE = NONE	CHECKED - JOH	REVISED -
PLOT DATE = 8/22/2011	DRAWN - TAC	REVISED -
	CHECKED - BAN	REVISED -

STATE OF ILLINOIS  
 DEPARTMENT OF TRANSPORTATION

PIER  
 STRUCTURE NO. 055-0063  
 SHEET NO. 27 OF 35 SHEETS

F.A.P. RTE.	SECTION	COUNTY	TOTAL SHEETS	SHEET NO.
315	55-3HB	McDonough	103	58
			CONTRACT NO. 68A40	
ILLINOIS FED. AID PROJECT				