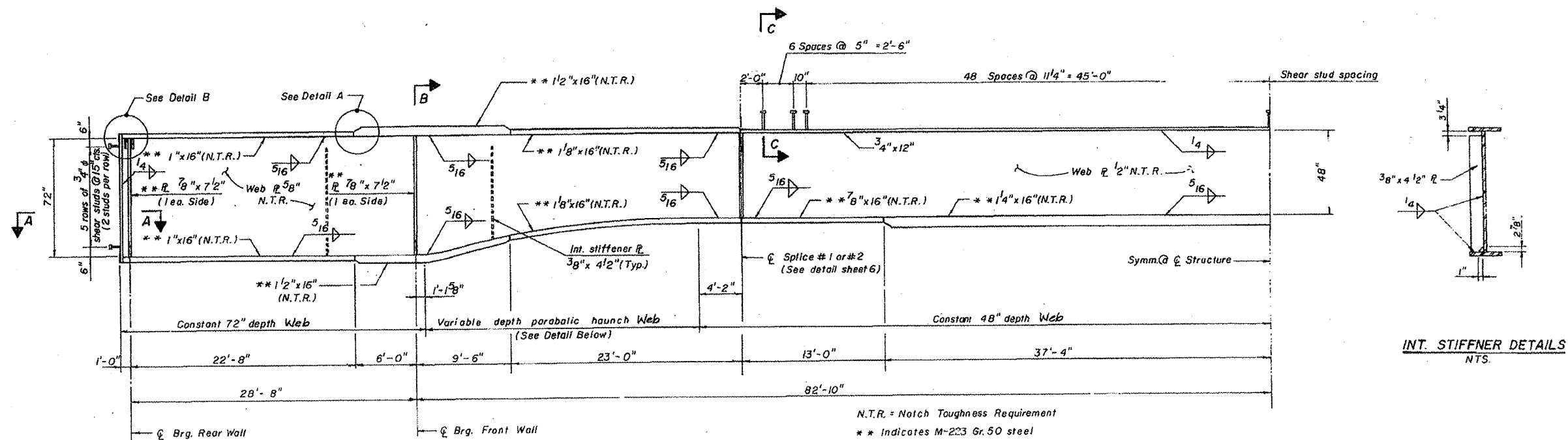
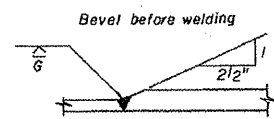


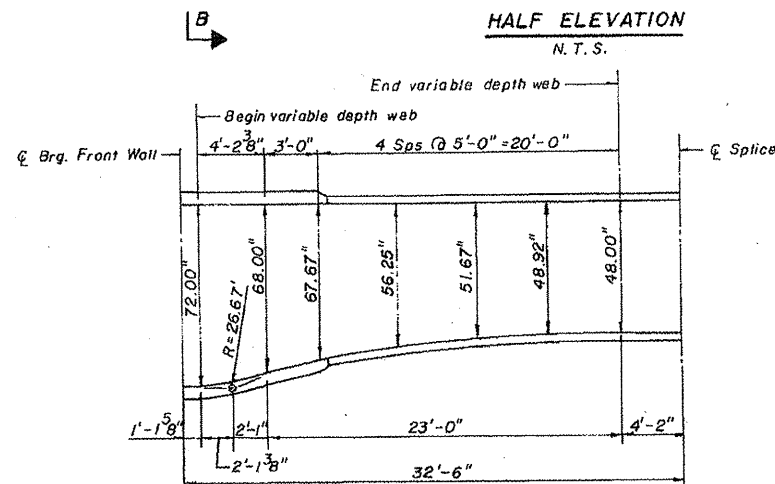
S.N. 102-0047 LOCATION 1 INFORMATION ONLY



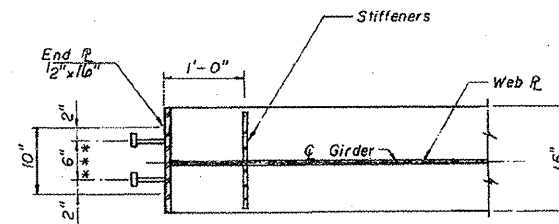
INT. STIFFNER DETAILS
N.T.S.



DETAIL A
N.T.S.

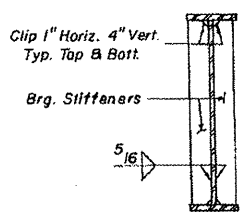


DETAIL OF PARABOLIC HAUNCH
N.T.S.



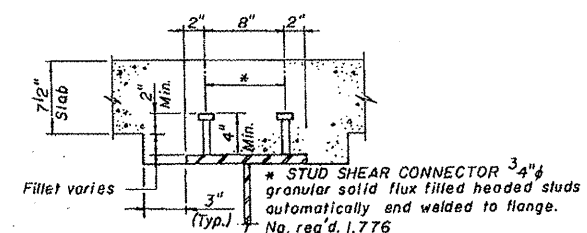
SECTION A-A
N.T.S.

** 3/4 inch x 4 inch Granular or solid flux filled headed studs automatically end welded to end plate. No. req'd. 160 STUD SHEAR CONNECTOR.

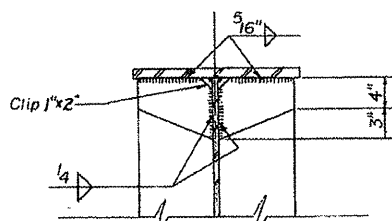


SECTION B-B
N.T.S.

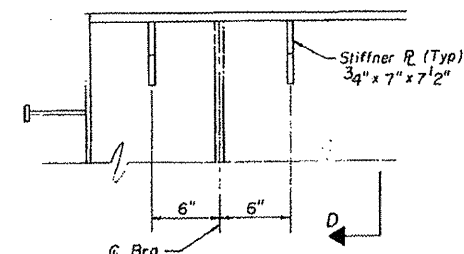
Brg. stiffeners shall be tight fit at top & mill to bear at bottom.



SECTION C-C
N.T.S.



SECTION D-D
N.T.S.



DETAIL B
N.T.S.

FILE NAME = April 2012 printing.dgn	USER NAME = AdedeSA	DESIGNED -	REVISED -	STATE OF ILLINOIS DEPARTMENT OF TRANSPORTATION	SCALE: _____ SHEET _____ OF _____ SHEETS STA. _____ TO STA. _____	F.A.I. RTE. 39	SECTION 102-[4B]3HB-2]]	COUNTY WOODFORD	TOTAL SHEETS 12	SHEET NO. 6
PLOT SCALE = 2.0198 / in.	CHECKED -	REVISED -	REVISED -			CONTRACT NO. 68A94				
PLOT DATE = 2/1/2012	DATE -	REVISED -	REVISED -			ILLINOIS FED. AID PROJECT				