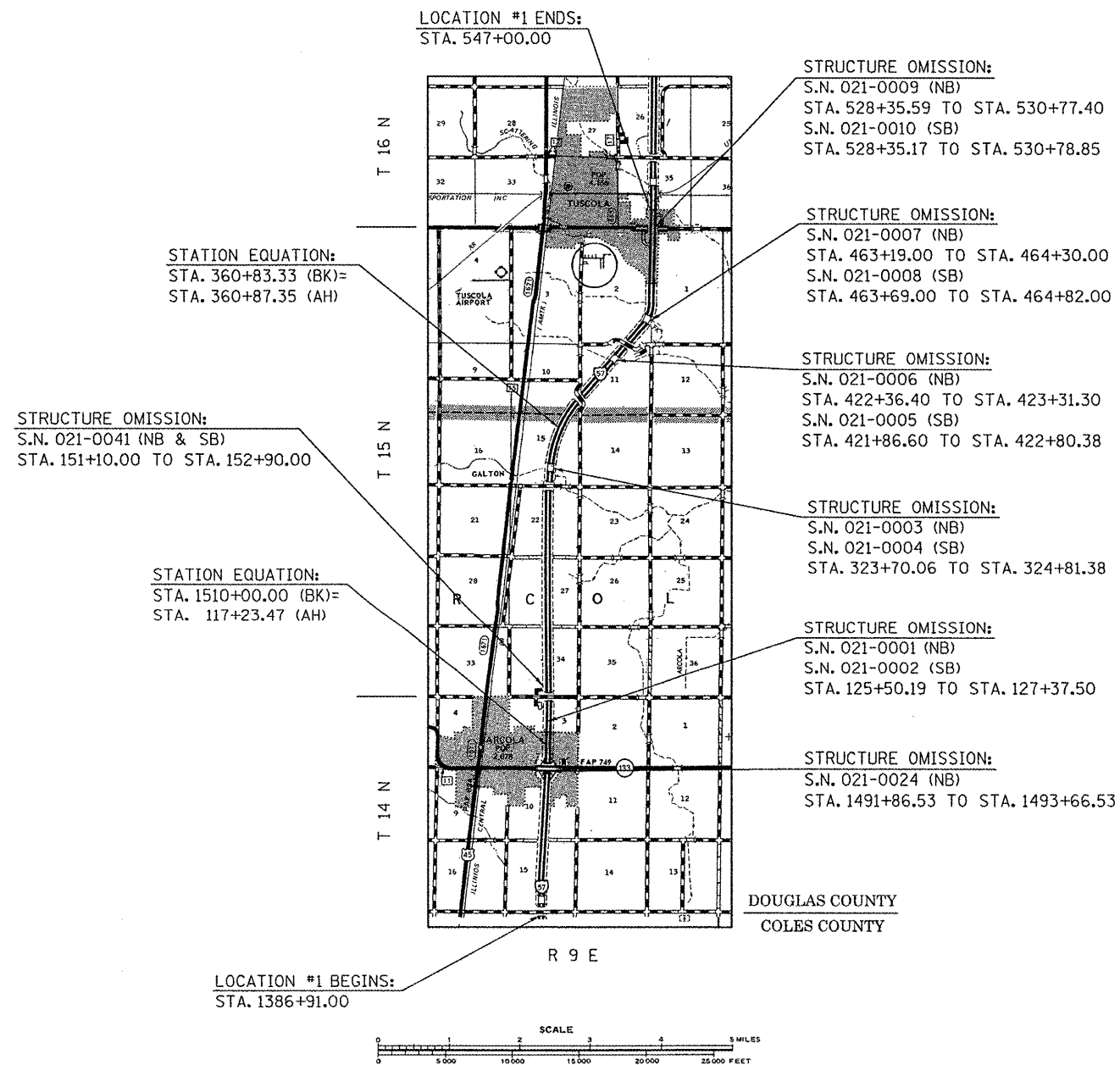


LOCATION MAP #1

F.A.I. ROUTE 57 (I-57) FROM COLES COUNTY LINE TO 0.3 MI N. OF U.S. 36

DOUGLAS COUNTY / RURAL INTERSTATE



GROSS LENGTH OF LOCATION #1 = 55,281.51 FT. = 10.470 MILES (NORTHBOUND)
NET LENGTH OF LOCATION #1 = 54,175.17 FT. = 10.260 MILES (NORTHBOUND)

• D5 CRACK & JOINT SEAL 2012-2

FILE NAME =	USER NAME = piersonbr	DESIGNED - BS	REVISED -	STATE OF ILLINOIS DEPARTMENT OF TRANSPORTATION	LOCATION MAP #1	F.A. RTE.	SECTION	COUNTY	TOTAL SHEETS	SHEET NO.	
ct:\p\work\p\dot\piersonbr\d0287987\05	0933-sht-loc_maps.dgn	DRAWN - BBP	REVISED -			VAR.	•	VAR.	24	3	
PLOT SCALE = 40.0000 / in.	CHECKED -	REVISED -	REVISED -			CONTRACT NO. 70933					
PLOT DATE = 1/27/2012	DATE - 01/05/12	REVISED -	REVISED -			ILLINOIS FED. AID PROJECT					
					SCALE: NONE	SHEET 1 OF 1 SHEETS		STA. TO STA.			