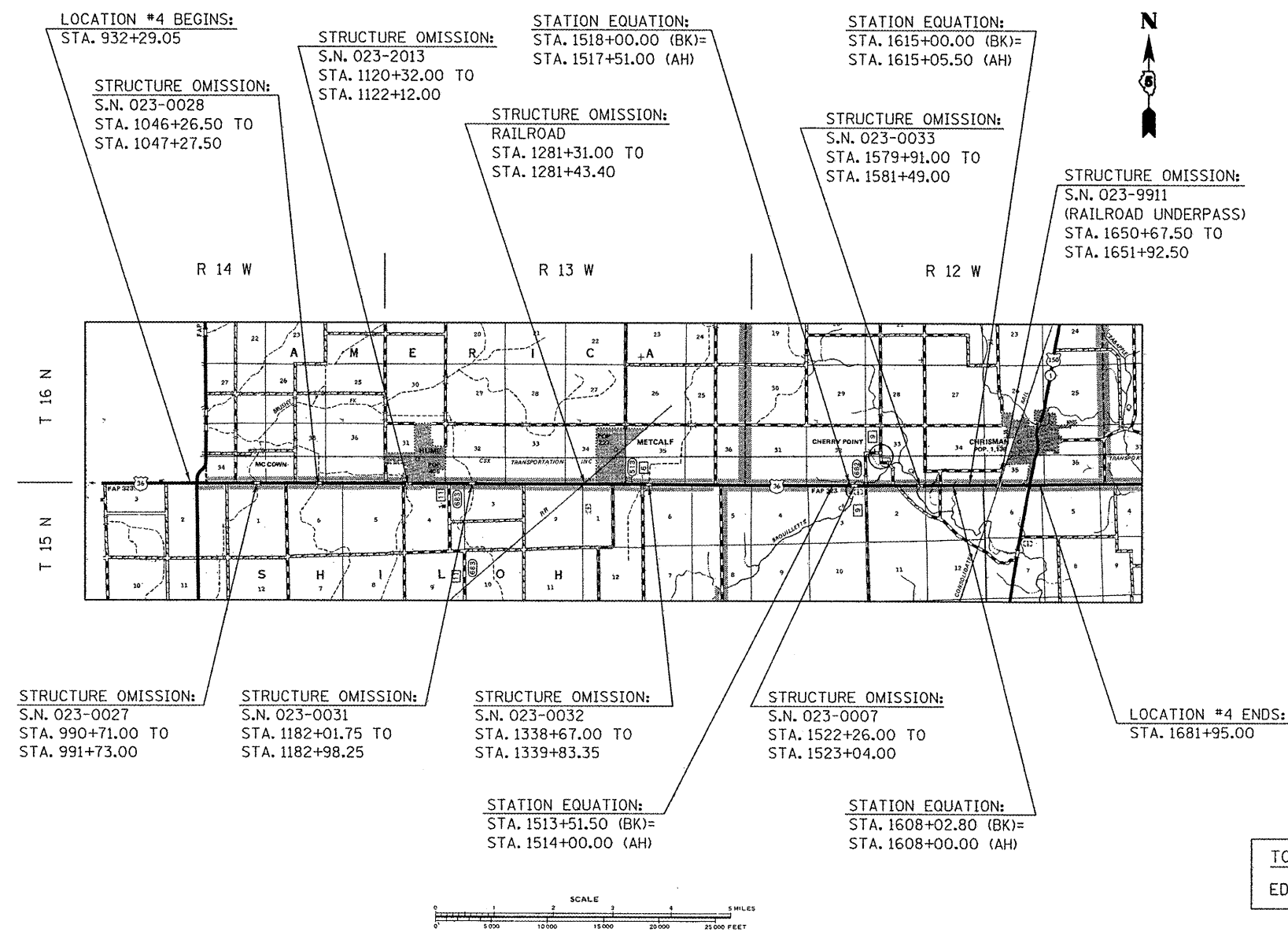


LOCATION MAP #4

F.A.P. ROUTE 323 (U.S. 36) FROM IL 49 TO U.S. 150 AT CHRISMAN

EDGAR COUNTY / RURAL 2-LANE



TOWNSHIP:
EDGAR, ROSS, YOUNG AMERICA, SHILOH

GROSS LENGTH OF LOCATION #4 = 74,963.75 FT. = 14.198 MILES
NET LENGTH OF LOCATION #4 = 73,994.50 FT. = 14.014 MILES

• D5 CRACK & JOINT SEAL 2012-2

FILE NAME =	USER NAME = ppersonbr	DESIGNED - BS	REVISED -	STATE OF ILLINOIS DEPARTMENT OF TRANSPORTATION	LOCATION MAP #4	F.A. RTE.	SECTION	COUNTY	TOTAL SHEETS	SHEET NO.
al:\pr-work\pvidot\piersonbr\08287987\0570933-shc-loc_maps.dgn	70933-shc-loc_maps.dgn	DRAWN - BBP	REVISED -			VAR.	•	VAR.	24	6
PLOT SCALE = 40.0000 "/>										
PLOT DATE = 1/27/2012	DATE = 01/05/12	REVISED -	REVISED -			SCALE: NONE SHEET 1 OF 1 SHEETS STA. TO STA.		CONTRACT NO. 70933		
ILLINOIS FED. AID PROJECT										