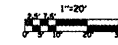


INSTALL PTZ CAMERA & CABINET
ON EXISTING STEEL LIGHT POLE

PTZ CAMERA INSTALLATION

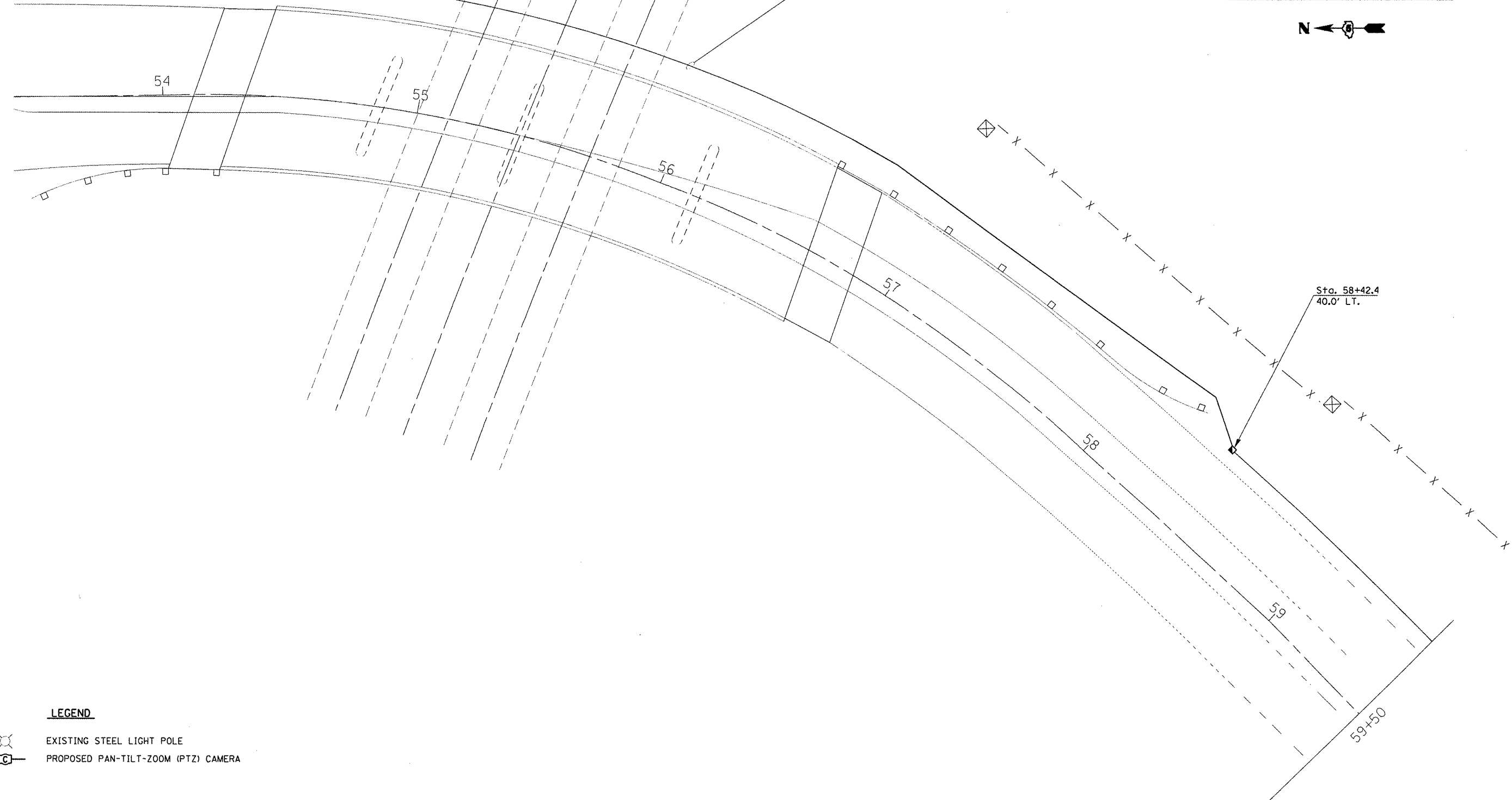
**F.A.U. 7045 (BOWMAN AVE.)
&
I-74**





CAMERA & CONDUIT /CABLE LAYOUT



440' PVC - 2"
1 NO. 12 2C, Sig.; 1 FO 6F MM;
1 No. 14 1C, Tracer; 1 No. 6 1C, Ground



LEGEND

-  EXISTING STEEL LIGHT POLE
-  PROPOSED PAN-TILT-ZOOM (PTZ) CAMERA

FILE NAME =	USER NAME = biggsrd	DESIGNED - ROB	REVISED -
c:\pwworkspace\biggsrd\0277273\0570558-Design.dgn		DRAWN - ROB	REVISED -
	PLOT SCALE = 40.0000' / 1"	CHECKED -	REVISED -
	PLOT DATE = 3/2/2012	DATE -	REVISED -

**STATE OF ILLINOIS
DEPARTMENT OF TRANSPORTATION**

**PTZ CAMERA INSTALLATION
CAMERA, CONDUIT & CABLE LAYOUT**

SCALE: SHEET OF SHEETS STA. TO STA.

F.A.U. RTE.	SECTION	COUNTY	TOTAL SHEETS	SHEET NO.
7045	(92-12)TS	VERMILION	11	8
ILLINOIS FED. AID PROJECT			CONTRACT NO. 70958	