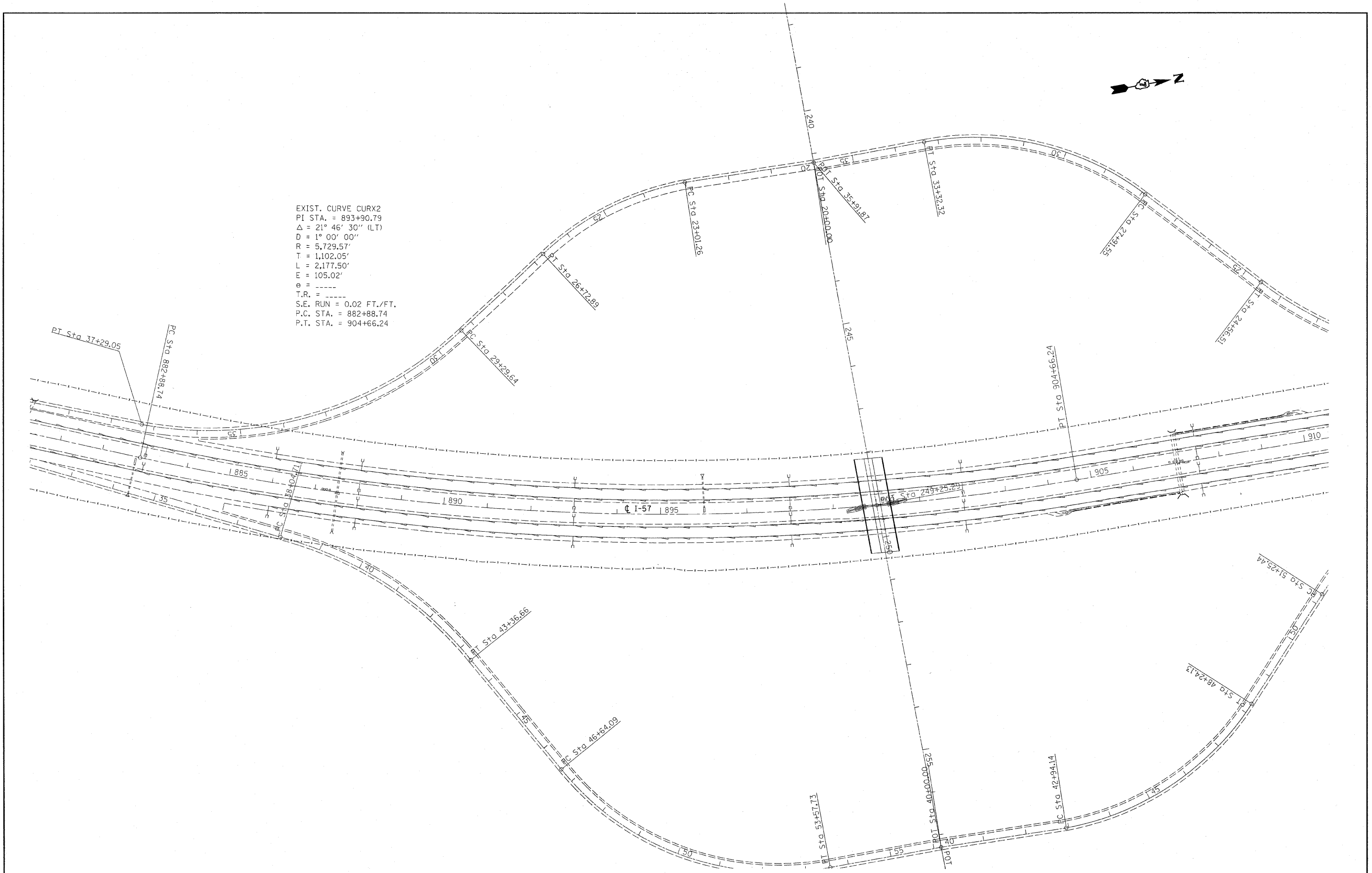




EXIST. CURVE CURX2  
 PI STA. = 893+90.79  
 $\Delta = 21^\circ 46' 30''$  (LT)  
 $D = 1^\circ 00' 00''$   
 $R = 5,729.57'$   
 $T = 1,102.05'$   
 $L = 2,177.50'$   
 $E = 105.02'$   
 $e = \text{-----}$   
 $T.R. = \text{-----}$   
 $S.E. RUN = 0.02 \text{ FT./FT.}$   
 $P.C. STA. = 882+88.74$   
 $P.T. STA. = 904+66.24$



FILE NAME =  
 c:\pwork\pwork\swartzr\0288358\077

USER NAME = swartzr  
 568-shr-plan.dgn  
 PLOT SCALE = 100.0000' / 1"  
 PLOT DATE = 1/31/2012

DESIGNED -	REVISED -
DRAWN -	REVISED -
CHECKED -	REVISED -
DATE -	REVISED -

**STATE OF ILLINOIS  
 DEPARTMENT OF TRANSPORTATION**

**PLAN**

SCALE: 100 SHEET 4 OF 21 SHEETS STA. 881+00 TO STA. 910+00

F.A.I. RTE.	SECTION	COUNTY	TOTAL SHEETS	SHEET NO.
57	15(22,23,24,25,26)RS-4	Coles	48	24
CONTRACT NO. 74560			ILLINOIS FED. AID PROJECT	