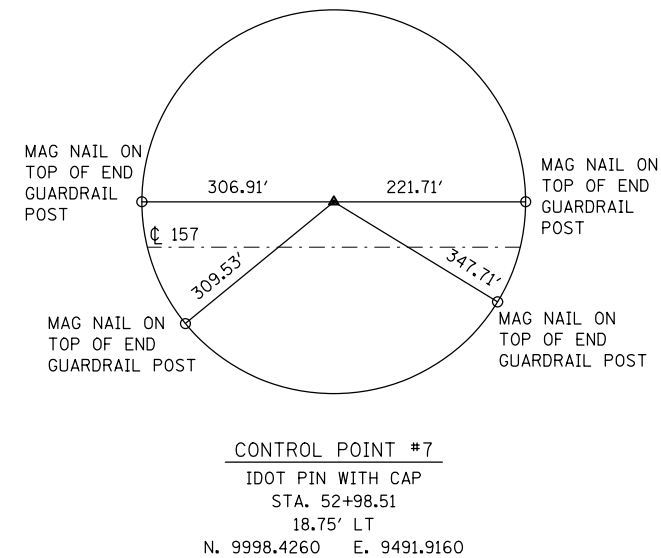
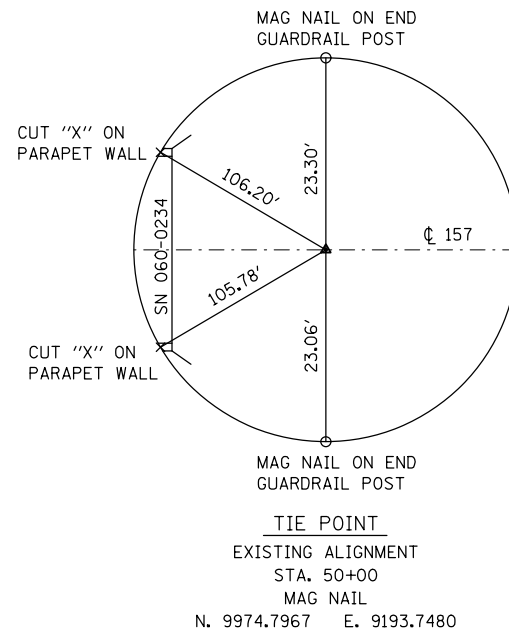
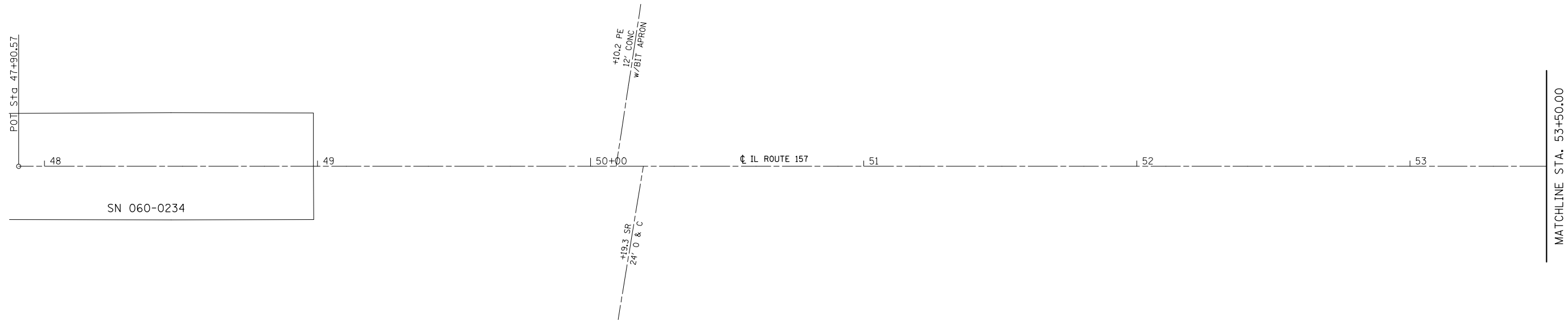


BENCHMARKS

- BM #2: FOUND CUT '□' ON TOP OF NORTHEAST WINGWALL OF IL 157 BRIDGE OVER SUGAR CREEK, SN 060-0072.
STA. 56+86.4, 17.2' LT., ELEV. 468.92
- BM #1: FOUND CUT '□' ON TOP OF NORTHWEST WINGWALL OF IL 157 BRIDGE OVER MOONEY CREEK, SN 060-0234.
STA. 47+88.0, 21.5' LT., ELEV. 469.34
- BM #13: FOUND CUT '□' ON SOUTHWEST CORNER OF DROP INLET WITH GRATE AT EAST SIDE OF OLD CARPENTER ROAD, ±0.1 MILES NORTH OF IL 157.
STA. 14+11.0, 26.0' RT., ELEV. 473.90
- BM*3: RAILROAD SPIKE IN 16" ELM; STA. 61+05, 40' LT., ELEV. 484.73



NOTES:
ALL MEASUREMENTS FOR TIE POINTS AND CONTROL POINTS ARE HORIZONTAL ELECTRONIC DISTANCES MEASUREMENTS.
TIE POINTS AND CONTROL POINTS NOT TO SCALE.

FILE NAME =	USER NAME = harbaughrd	DESIGNED -	REVISED -	STATE OF ILLINOIS DEPARTMENT OF TRANSPORTATION	ALIGNMENT, TIES, & BENCHMARKS	F.A.S. RTE.	SECTION	COUNTY	TOTAL SHEETS	SHEET NO.	
	et:\pwork\pwork\dot\harbaughrd\0139799\076401-sht-ATB.dgn	DRAWN -	REVISED -			770	64-1BR	MADISON	137	17	
	PLOT SCALE = 40.0000' / in.	CHECKED -	REVISED -			CONTRACT NO. 76401					
	PLOT DATE = 2/3/2012	DATE -	REVISED -			FED. ROAD DIST. NO. ILLINOIS FED. AID PROJECT					