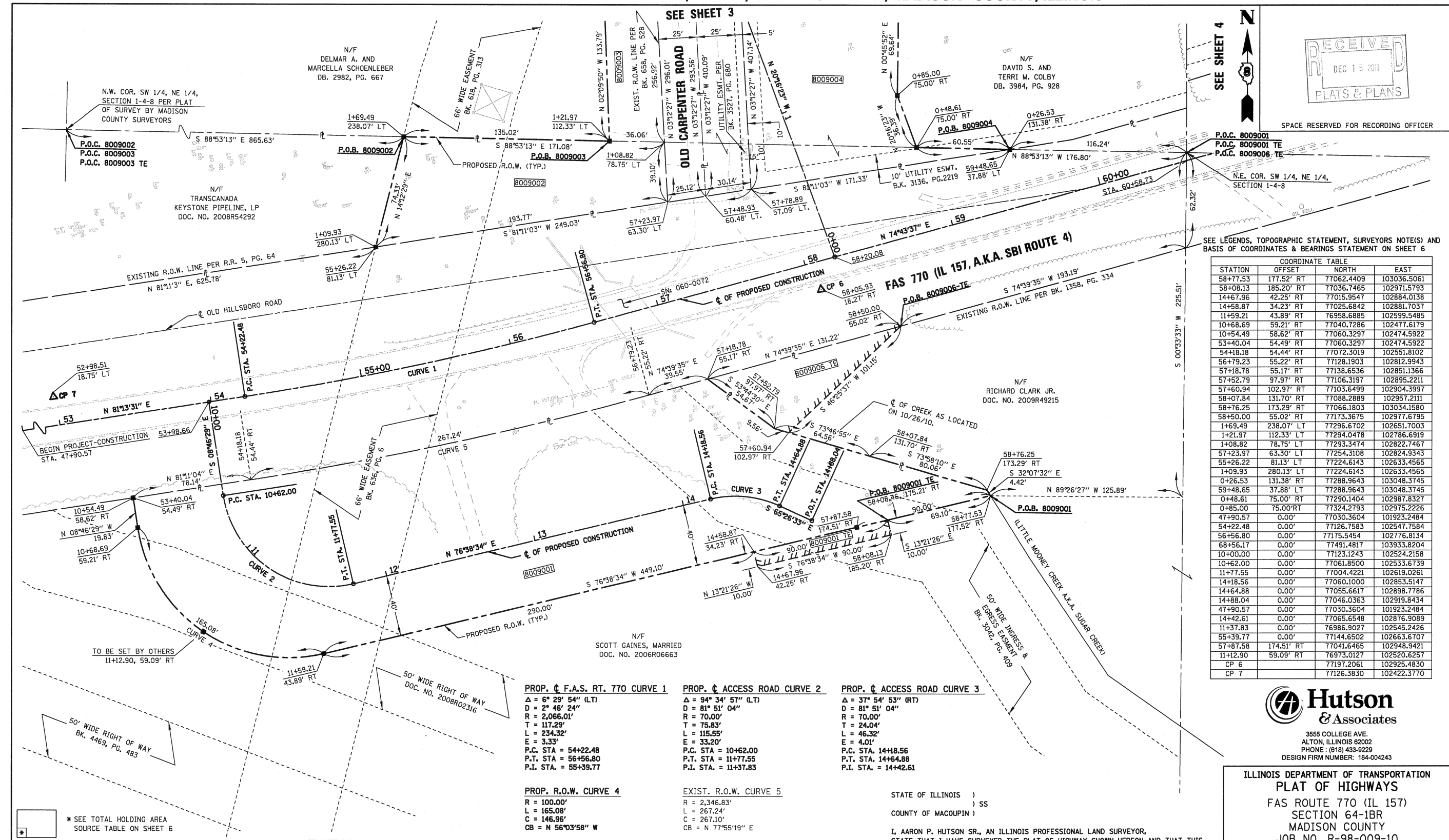


PART OF THE NE 1/4 OF SECTION 1 T. 4 N., R. 8 W., OF THE 3RD P.M., MADISON COUNTY, ILLINOIS



SEE LEGENDS, TOPOGRAPHIC STATEMENT, SURVEYORS NOTE(S) AND BASIS OF COORDINATES & BEARINGS STATEMENT ON SHEET 6

COORDINATE TABLE			
STATION	OFFSET	NORTH	EAST
58+77.53	177.52' RT	77062.4409	103036.5061
58+08.13	185.20' RT	77036.7465	102971.5793
14+67.96	42.25' RT	77015.9547	102884.0138
14+58.87	34.23' RT	77025.6842	102881.7037
11+59.21	43.89' RT	76958.6885	102599.5485
10+68.69	59.21' RT	77040.7286	102477.6179
10+54.49	58.62' RT	77060.3297	102474.5922
53+40.04	54.49' RT	77060.3297	102474.5922
54+18.18	54.44' RT	77072.3019	102551.8102
56+79.23	55.22' RT	77128.1903	102812.9943
57+18.78	55.17' RT	77138.6536	102851.1366
57+52.79	97.97' RT	77106.3197	102895.2211
57+60.94	102.97' RT	77103.6499	102904.3997
58+07.84	131.70' RT	77088.2889	102957.2111
58+76.25	173.29' RT	77066.1803	103034.1580
58+50.00	55.02' RT	77173.3675	102977.6795
1+69.49	238.07' LT	77296.6702	102651.7003
1+21.97	112.33' LT	77294.0478	102786.6919
1+08.82	78.75' LT	77293.3474	102822.7467
57+23.97	63.30' LT	77254.3108	102824.9343
55+26.22	81.13' LT	77224.6143	102633.4565
1+09.93	280.13' LT	77224.6143	102633.4565
0+26.53	131.38' RT	77288.9643	103048.3745
59+48.65	37.88' LT	77288.9643	103048.3745
0+48.61	75.00' RT	77290.1404	102987.8327
0+85.00	75.00' RT	77324.2793	102975.2226
47+90.57	0.00'	77030.3604	101923.2484
54+22.48	0.00'	77126.7583	102547.7584
56+56.80	0.00'	77175.5454	102776.8134
68+56.17	0.00'	77491.4817	103933.8204
10+00.00	0.00'	77123.1243	102524.2158
10+62.00	0.00'	77061.8500	102533.6739
11+77.55	0.00'	77004.4221	102619.0261
14+18.56	0.00'	77060.1000	102853.5147
14+64.88	0.00'	77055.6617	102898.7786
14+88.04	0.00'	77046.0363	102919.8434
47+90.57	0.00'	77030.3604	101923.2484
14+42.61	0.00'	77065.6548	102876.9089
11+37.83	0.00'	76986.9027	102545.2426
55+39.77	0.00'	77144.6502	102663.6707
57+87.58	174.51' RT	77041.6465	102948.9421
11+12.90	59.09' RT	76973.0127	102520.6257
CP 6		77197.2061	102925.4830
CP 7		77126.3830	102422.3770

**PROP.  $\phi$  F.A.S. RT. 770 CURVE 1**  
 $\Delta = 6^\circ 29' 54''$  (LT)  
 $D = 2^\circ 46' 24''$   
 $R = 2,066.01'$   
 $T = 117.29'$   
 $L = 234.32'$   
 $E = 3.33'$   
P.C. STA = 54+22.48  
P.T. STA = 56+56.80  
P.I. STA. = 55+39.77

**PROP.  $\phi$  ACCESS ROAD CURVE 2**  
 $\Delta = 94^\circ 34' 57''$  (LT)  
 $D = 81^\circ 51' 04''$   
 $R = 70.00'$   
 $T = 75.83'$   
 $L = 115.55'$   
 $E = 33.20'$   
P.C. STA = 10+62.00  
P.T. STA = 11+77.55  
P.I. STA. = 11+37.83

**PROP.  $\phi$  ACCESS ROAD CURVE 3**  
 $\Delta = 37^\circ 54' 53''$  (RT)  
 $D = 81^\circ 51' 04''$   
 $R = 70.00'$   
 $T = 24.04'$   
 $L = 46.32'$   
 $E = 4.01'$   
P.C. STA. 14+18.56  
P.T. STA. 14+64.88  
P.I. STA. = 14+42.61

**PROP. R.O.W. CURVE 4**  
 $R = 100.00'$   
 $L = 165.08'$   
 $C = 146.96'$   
 $CB = N 56^\circ 03' 58'' W$

**EXIST. R.O.W. CURVE 5**  
 $R = 2,346.83'$   
 $L = 267.24'$   
 $C = 267.10'$   
 $CB = N 77^\circ 55' 19'' E$

**Hutson & Associates**  
 3555 COLLEGE AVE.  
 ALTON, ILLINOIS 62002  
 PHONE: (618) 433-9229  
 DESIGN FIRM NUMBER: 184-004243

ILLINOIS DEPARTMENT OF TRANSPORTATION  
**PLAT OF HIGHWAYS**  
 FAS ROUTE 770 (IL 157)  
 SECTION 64-1BR  
 MADISON COUNTY  
 JOB NO. R-98-009-10  
 STATION 47+90.57 TO STATION 59+00

SCALE: 1" = 30'

SHEET 2 OF 6

ILLINOIS DEPARTMENT OF TRANSPORTATION  
 DIVISION OF HIGHWAYS/REGION 5/DISTRICT 8  
 1102 EASTPORT PLAZA DRIVE  
 COLLINGSVILLE, ILLINOIS 62234-6198

F.A. RTE.	SECTION	COUNTY	TOTAL SHEETS	SHEET NO.
770	64-1BR	MADISON	137	65

COMPLETION DATE OF FIELD WORK PERFORMED  
 LAND SURVEY: 10/26/10    ROW STAKING:

FED. ROAD DIST. NO.    ILLINOIS FED. AID PROJECT

PARCEL NO.	OWNER	TOTAL HOLDING ACRES	FEE SIMPLE ACQUISITION				REMAINDER ACRES	EASEMENTS		PERMANENT TAX NUMBER	PROPERTY ACQUIRED BY		
			GROSS ACRES	PREVIOUSLY DEDICATED ACRES	AND/OR USED SQ. FT.	NET ACRES		TE = TEMPORARY ACRES	SQ. FT.			EASEMENT PURPOSE	
8009001	SCOTT GAINES, MARRIED 18-2009MA-4301.0	14.7415	1.1887	51,778	N/A	N/A	1.1887	51,778	13.5528	0.0207	900	ENTRANCE CONSTRUCTION	14-1-15-01-00-000-014.006
8009002	TRANSCANADA KEYSTONE PIPELINE, LP 18-2009MA-4298.0	1.6716	0.2500	10,885	0.0212	922	0.2288	9,963	1.4216	N/A	N/A	N/A	14-1-15-01-00-000-014.001
8009006	RICHARD CLARK, JR. 18-2009MA4300.0	13.4425	N/A	N/A	N/A	N/A	N/A	N/A	13.4425	0.0741	3,229	GRADING & WORKING AREA	14-1-15-01-00-000-014.005