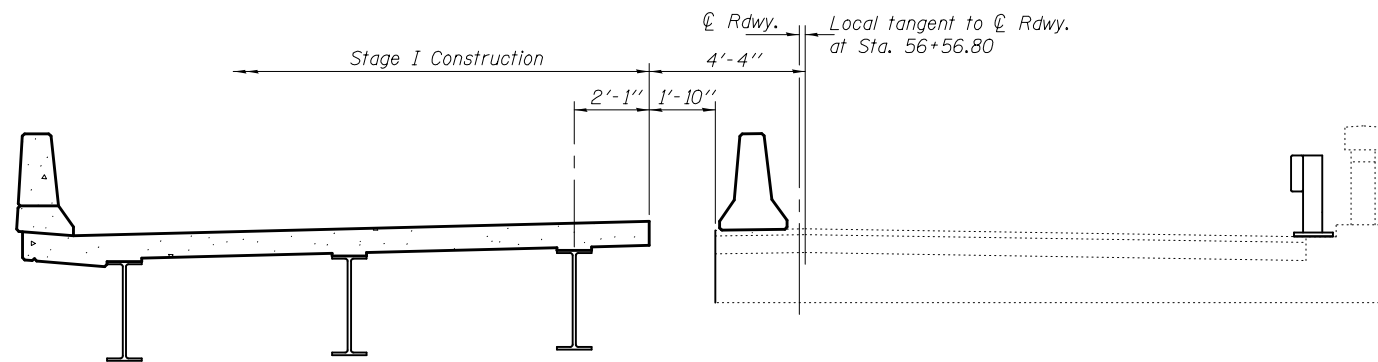
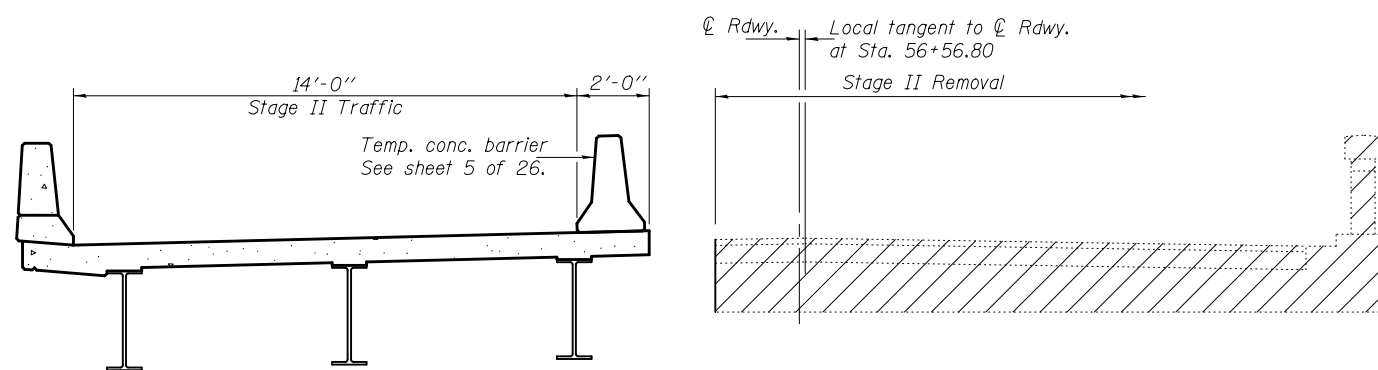


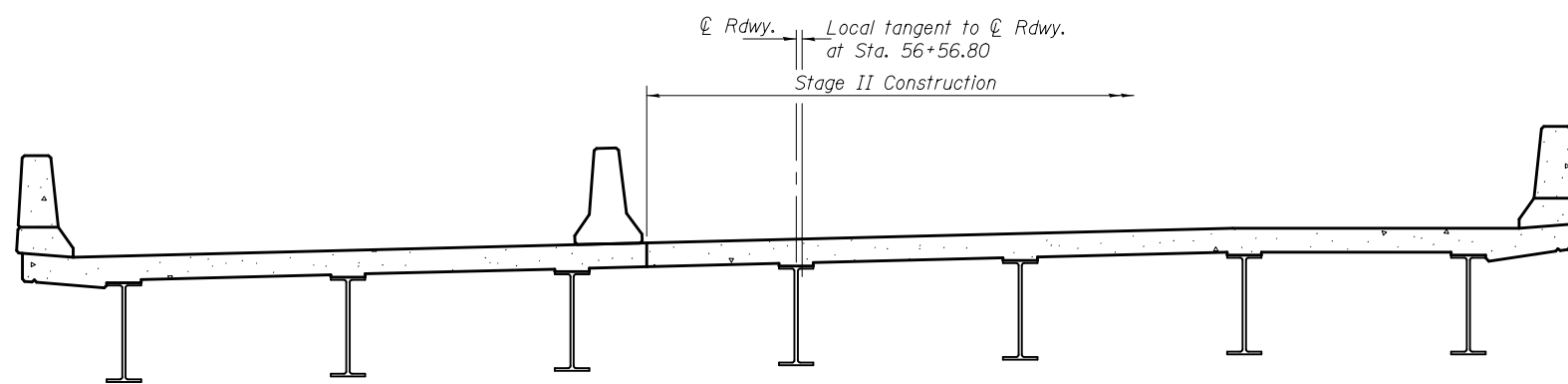
STAGE I REMOVAL



STAGE I CONSTRUCTION

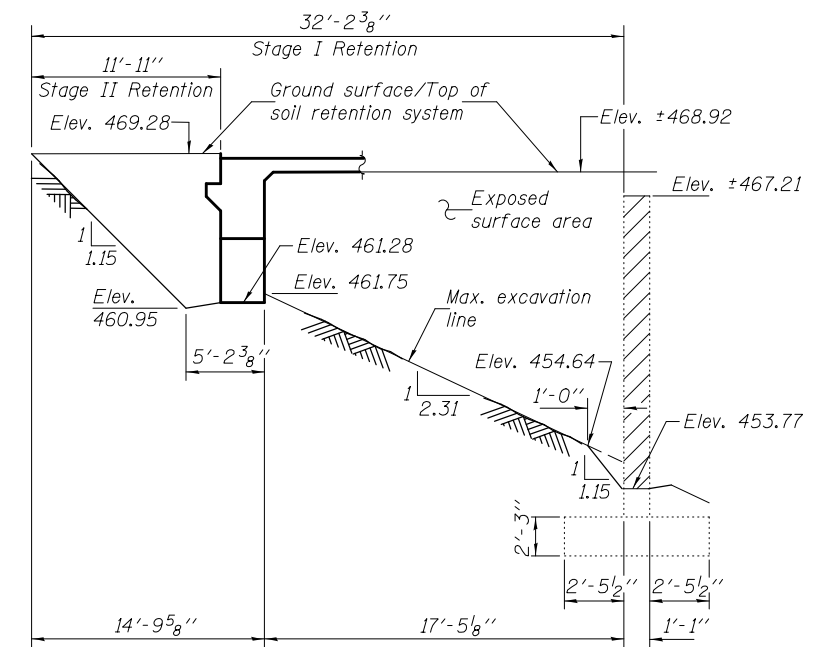


STAGE II REMOVAL



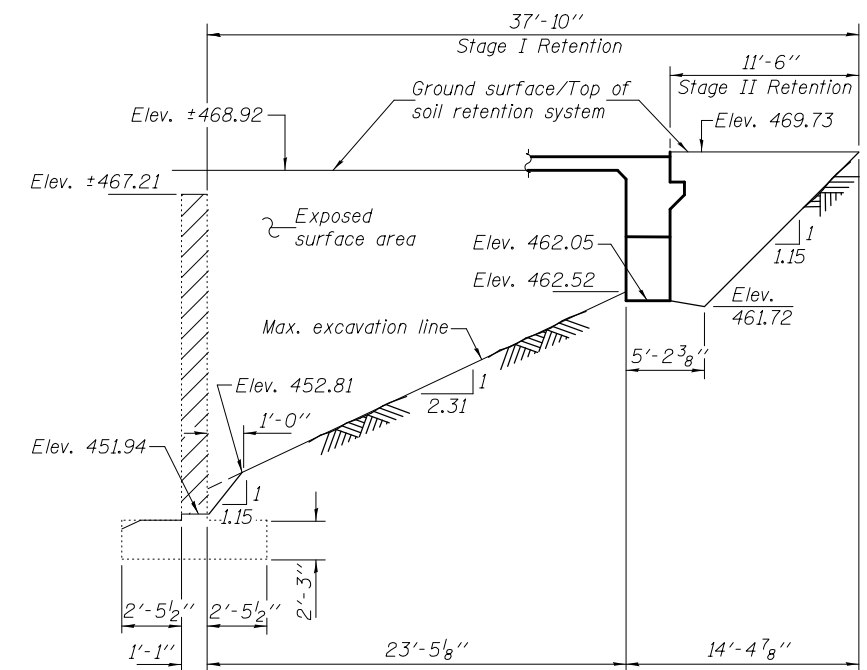
STAGE II CONSTRUCTION

Notes: All sections are looking East.
Hatched area indicates removal of existing superstructure.
For quantity of temporary concrete barrier, see Roadway Plans.



TEMPORARY SOIL RETENTION SYSTEM AT WEST ABUTMENT

Horizontal dimensions are taken along skew.



TEMPORARY SOIL RETENTION SYSTEM AT EAST ABUTMENT

Horizontal dimensions are taken along skew.

Note: A cantilevered sheet piling design does not appear feasible and additional members or other retention systems may be necessary. The Contractor shall submit a temporary soil retention system design including plan details and calculations for review and acceptance by the Engineer.

| | |
|----------|----------------------|
| DESIGNED | - Stephen M. Ryan |
| CHECKED | - Fess Teklehalmanot |
| DRAWN | - h.t. duong |
| CHECKED | - GRA/SMR/FT |

| | |
|----------|---|
| EXAMINED | <i>Thomas Domagalaki</i> ENGINEER OF BRIDGE DESIGN |
| PASSED | <i>Carl Perry</i> ENGINEER OF BRIDGES AND STRUCTURES |

| | |
|---------|------------------|
| DATE | - MARCH 20, 2012 |
| REVISED | |
| REVISED | |

STATE OF ILLINOIS
DEPARTMENT OF TRANSPORTATION

STAGE CONSTRUCTION & TEMP. SOIL RETENTION SYSTEM DETAILS
STRUCTURE NO. 060-0204

SHEET NO. 3 OF 26 SHEETS

| | | | | |
|---------------------------|---------|---------|--------------|-----------|
| F.A.S. RTE. | SECTION | COUNTY | TOTAL SHEETS | SHEET NO. |
| 770 | 64-1BR | MADISON | 137 | 77 |
| CONTRACT NO. 76401 | | | | |
| ILLINOIS FED. AID PROJECT | | | | |