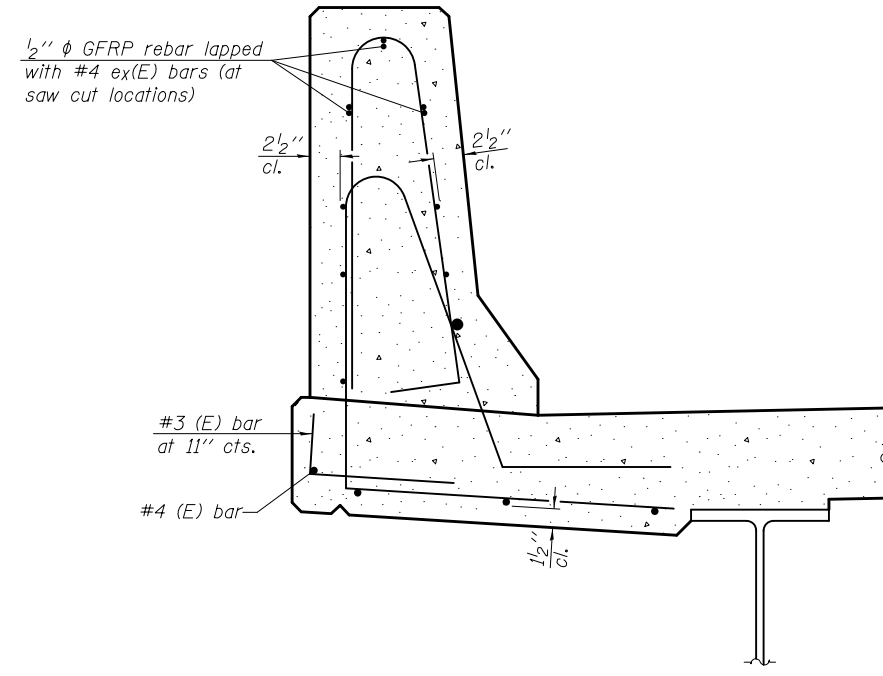


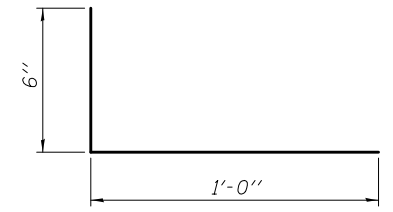
SECTION
(Showing dimensions)

* See Superstructure Details.

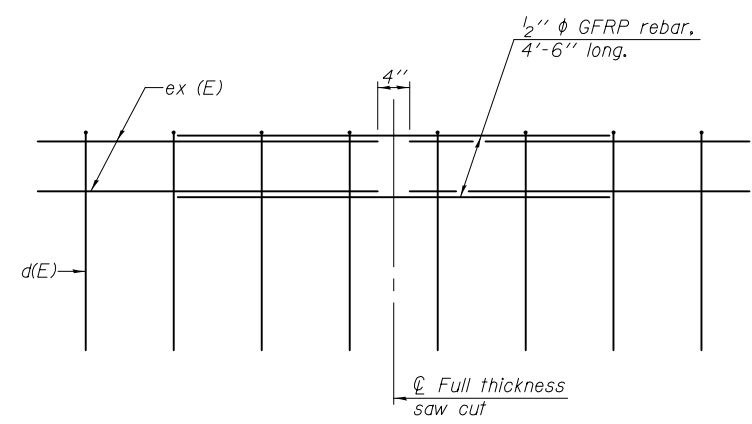


SECTION
(Showing reinforcement clearances for slip forming and additional reinforcement bars)

GENERAL NOTES
All dimensions shall remain the same as shown on superstructure details, except dimensions A and B which are to be revised as shown to provide additional clearance. Additional concrete needed to revise dimension A and B = 0.0165 cu. yds./ft. of parapet.
Place aluminum sheet in curb portion at and near piers. Full thickness saw cut at all joint locations in lieu of cork joint filler.
Steel superstructure shown. Other superstructure types similar.



#3 (E) BAR



GFRP REBAR STIFFENING DETAIL
(Place as shown in parapet section at each parapet joint location.)

SFP-34 1-27-12

DESIGNED - Stephen M. Ryan	EXAMINED - <i>Thomas Domagalaki</i> ENGINEER OF BRIDGE DESIGN	DATE - MARCH 20, 2012
CHECKED - Fess Teklehalmanot	PASSED - <i>Carl Long</i> ENGINEER OF BRIDGES AND STRUCTURES	REVISED
DRAWN - h.t. duong		REVISED
CHECKED - GRA/SMR/FT		

STATE OF ILLINOIS
DEPARTMENT OF TRANSPORTATION

CONCRETE PARAPET SLIPFORMING OPTION
STRUCTURE NO. 060-0204

F.A.S. RTE.	SECTION	COUNTY	TOTAL SHEETS	SHEET NO.
770	64-1BR	MADISON	137	96A
CONTRACT NO. 76401				

SHEET NO. 22A OF 26 SHEETS

ILLINOIS FED. AID PROJECT