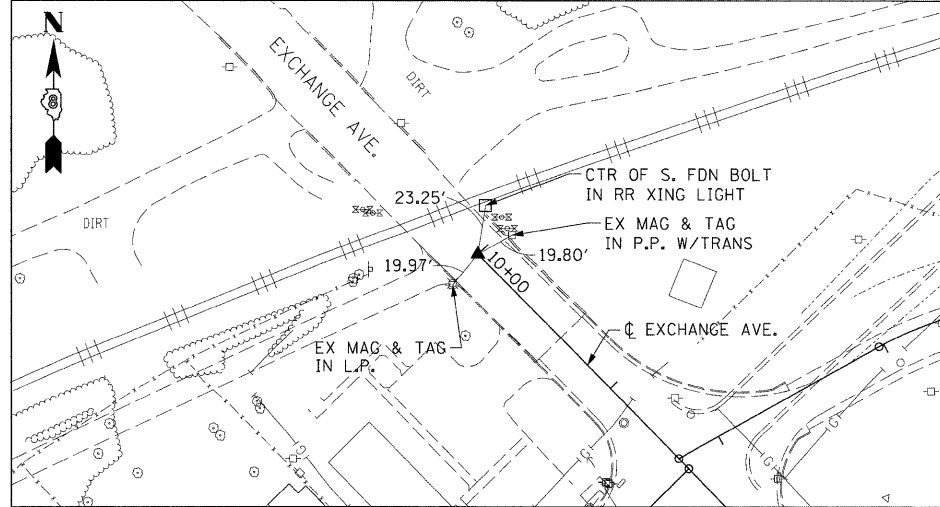
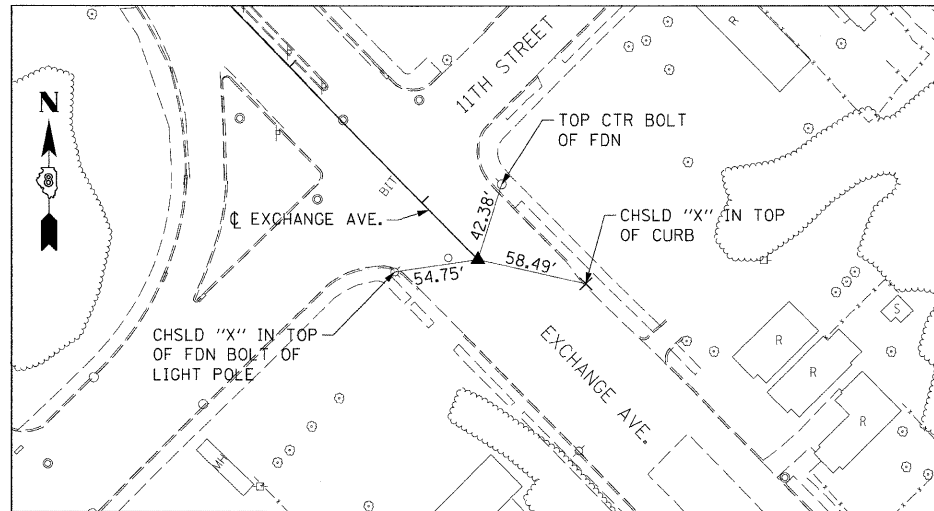


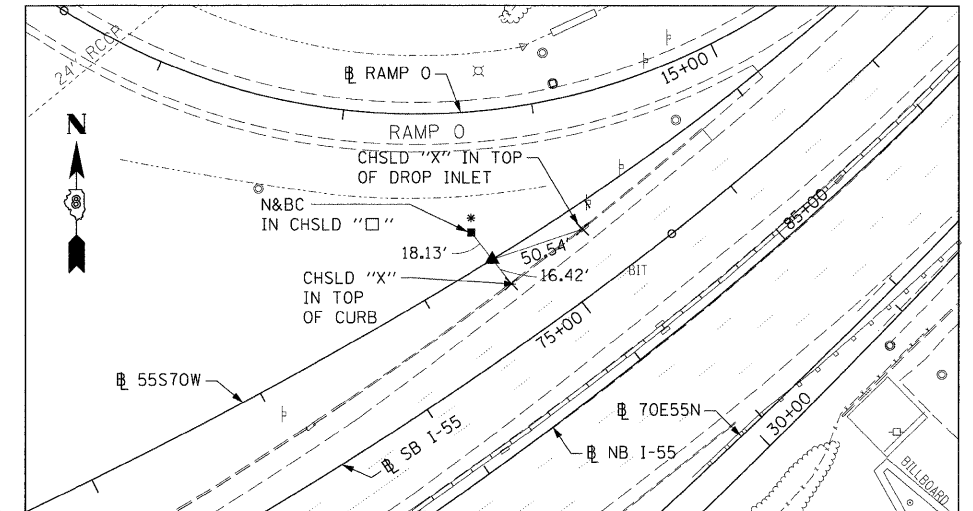
EXCHANGE AVENUE
 POT STA 10+00.00
 SET MEG NAIL IN CONC. CRACK W/CHSLD "X"
 (CONTROL POINT MAY NEED TO BE RE-ESTABLISHED DUE TO CONSTRUCTION ACTIVITY.)



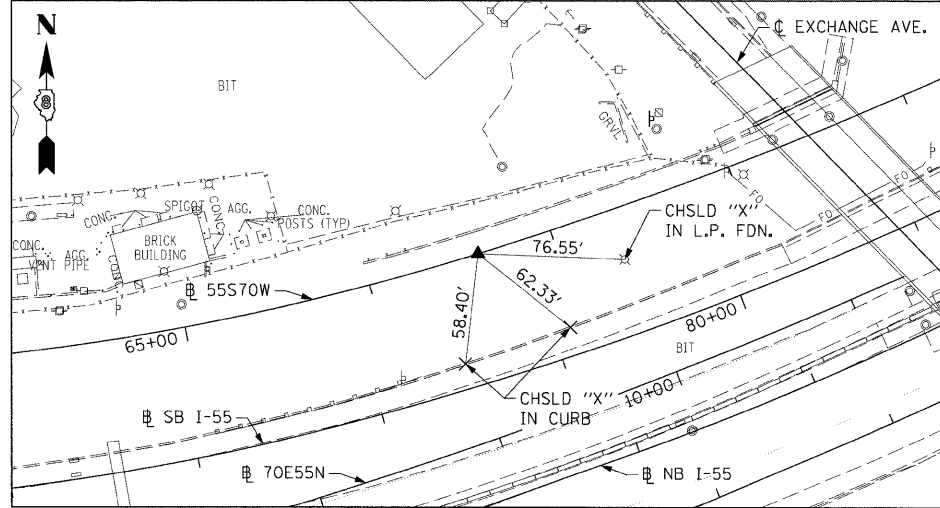
EXCHANGE AVENUE
 POT STA 27+42.42
 SET MEG NAIL IN CHSLD "□" W/CHSLD "X"



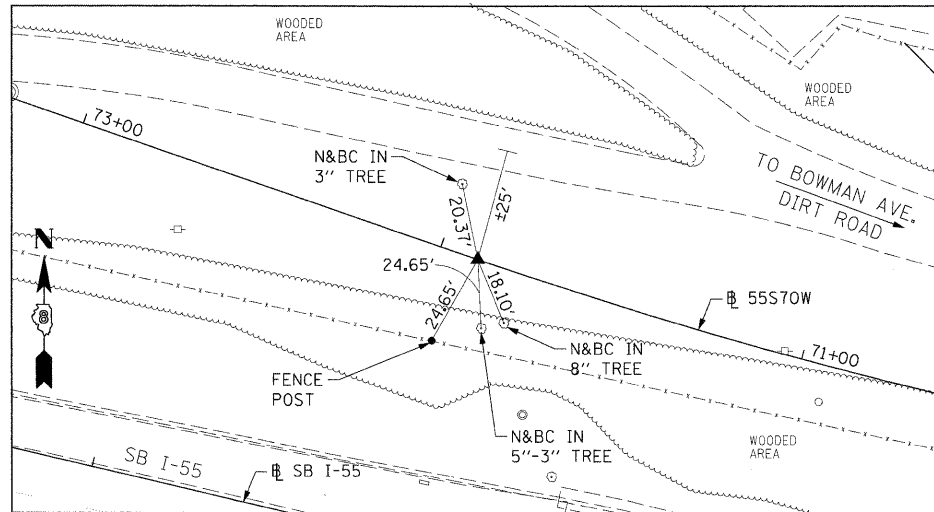
55S70W
 PCC STA 57+58.25
 SET 5/8" REBAR W/RED CAP FLUSH W/GR



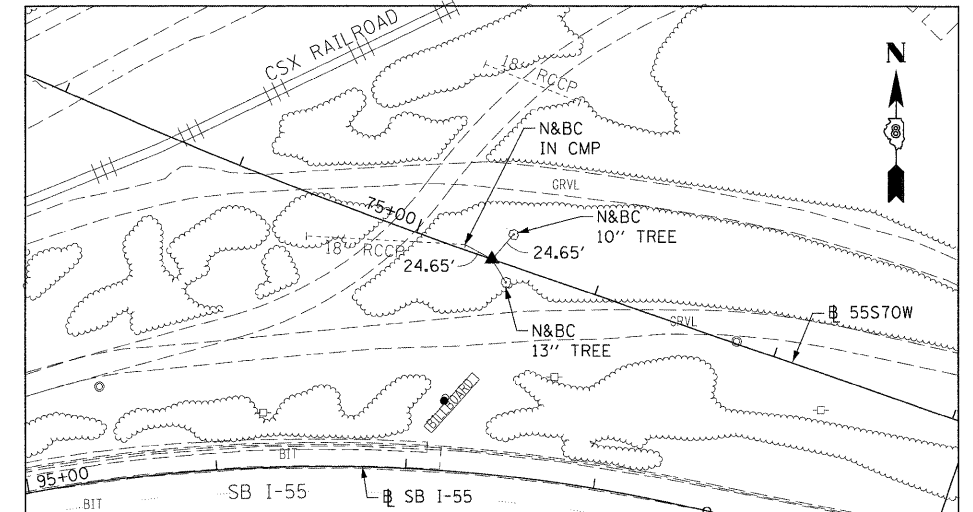
55S70W
 PCC STA 63+40.22
 SET 5/8" REBAR W/RED LINENG CAP FLUSH W/GR
 (CONTROL POINT MAY NEED TO BE RE-ESTABLISHED DUE TO CONSTRUCTION ACTIVITY.)



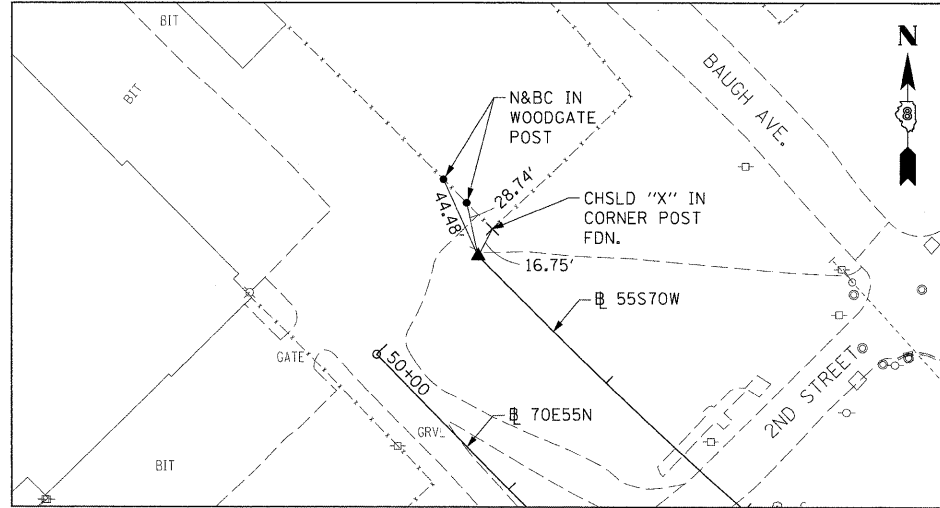
55S70W
 PT STA 71+89.66
 SET 5/8" REBAR W/RED CAP FLUSH W/GR



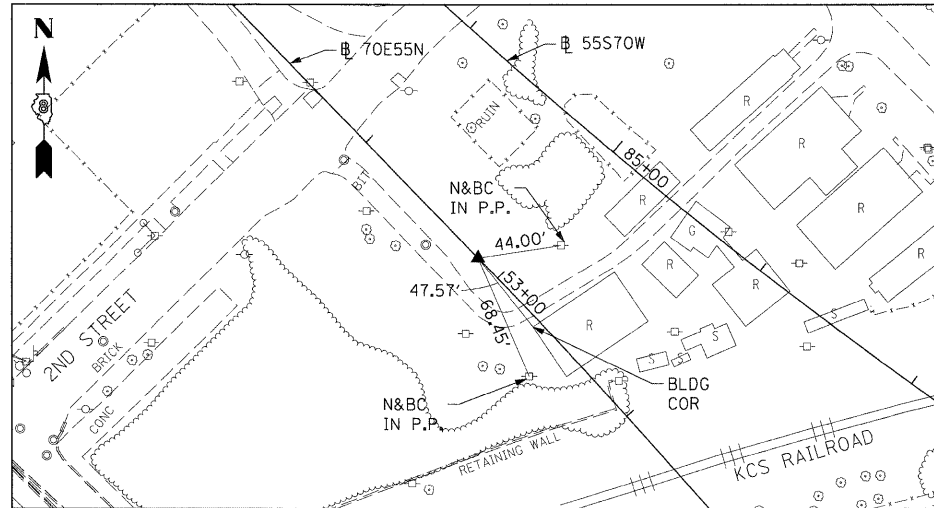
55S70W
 PC STA 74+57.77
 SET 5/8" REBAR W/RED LIN TRAV. PT CAP



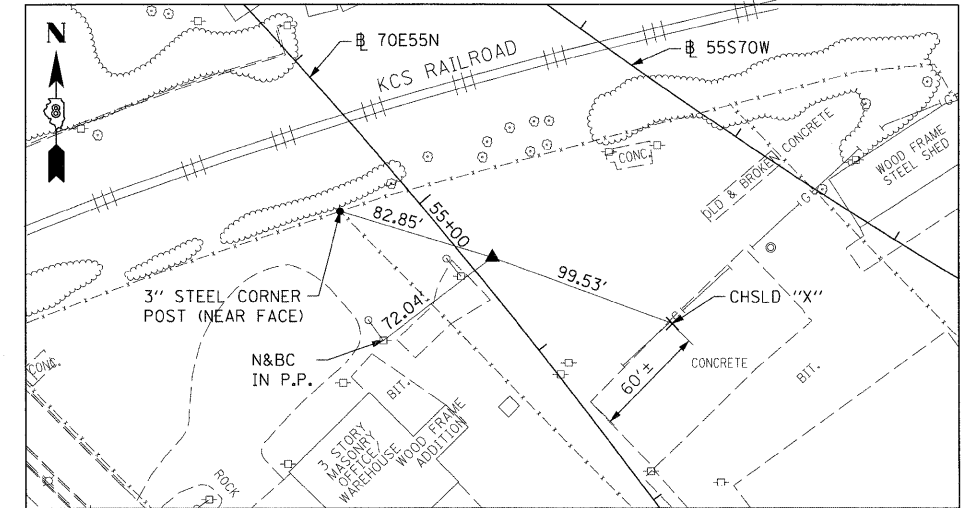
55S70W
 PT STA 87+95.40
 SET 5/8" REBAR W/RED LIN ENG. CAP FLUSH W/GR



70E55N
 PC STA 52+85.08
 5/8" I. PIN W/YELLOW CAP



70E55N
 PI STA 55+46.88
 5/8" I. PIN W/YELLOW CAP



FILE NAME = D8TR1-76C45-sht-ATB-08.dgn	USER NAME = mimoanachis	DESIGNED - OP	REVISED -
	PLOT SCALE = 50.0000' / 1" =	DRAWN - PHP	REVISED -
	PLOT DATE = 2/2/2012	CHECKED - DBM	REVISED -
		DATE - 2/2/2012	REVISED -

STATE OF ILLINOIS
 DEPARTMENT OF TRANSPORTATION

ALIGNMENT, TIES AND BENCHMARKS

SCALE: N/A SHEET NO. 8 OF 11 SHEETS STA. N/A TO STA. N/A

F.A.J. RTE.	SECTION	COUNTY	TOTAL SHEETS	SHEET NO.
•	82-15G	ST. CLAIR	145	18
•998/70/64			CONTRACT NO. 76C45	
FED. ROAD DIST. NO. ILLINOIS FED. AID PROJECT				