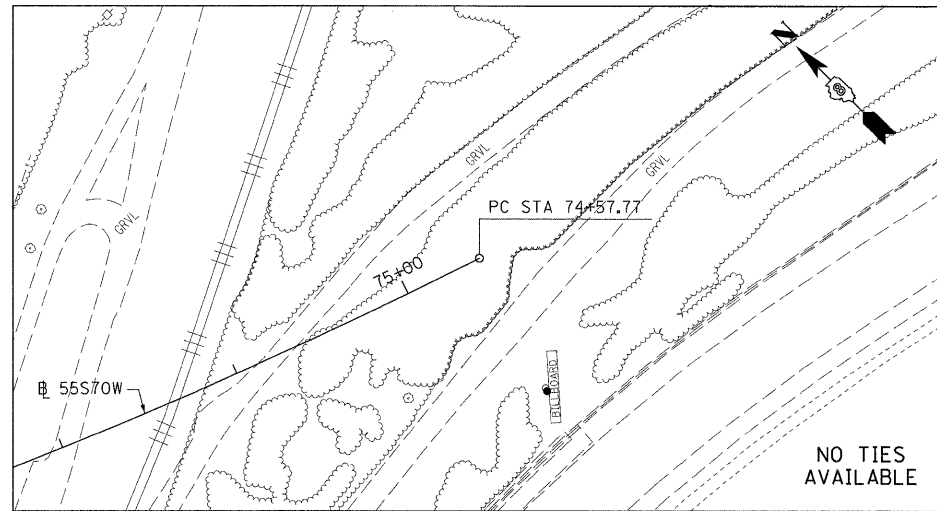
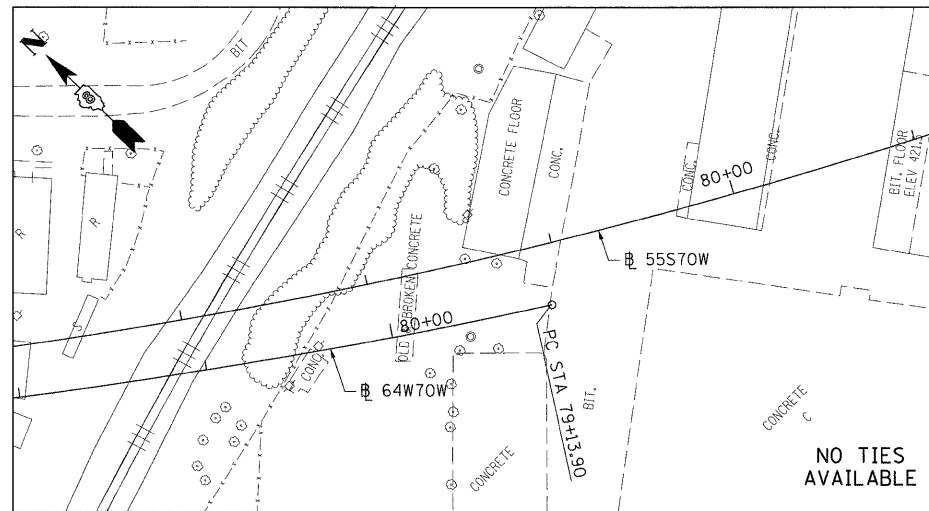


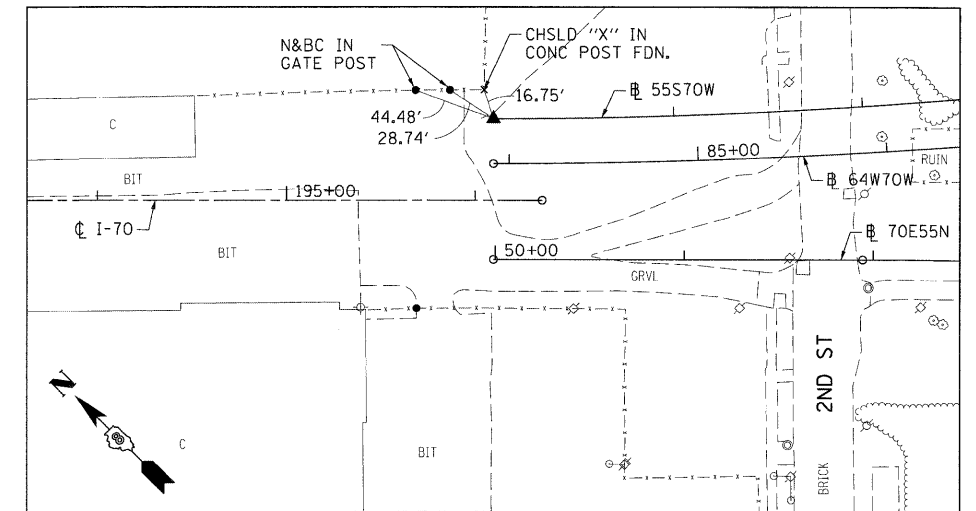
55S70W  
PC STA 74+57.77  
SET 5/8" I PIN W/RED CAP



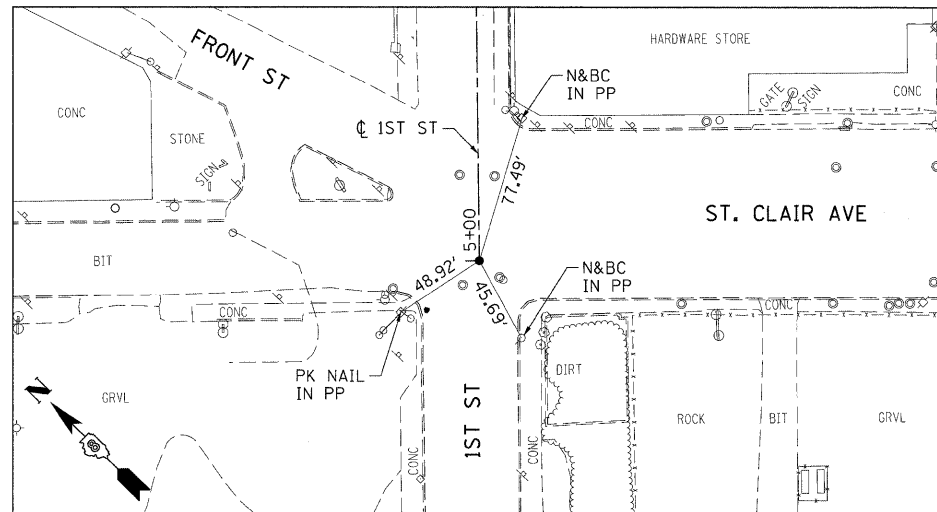
55S70W  
PI STA 81+39.12



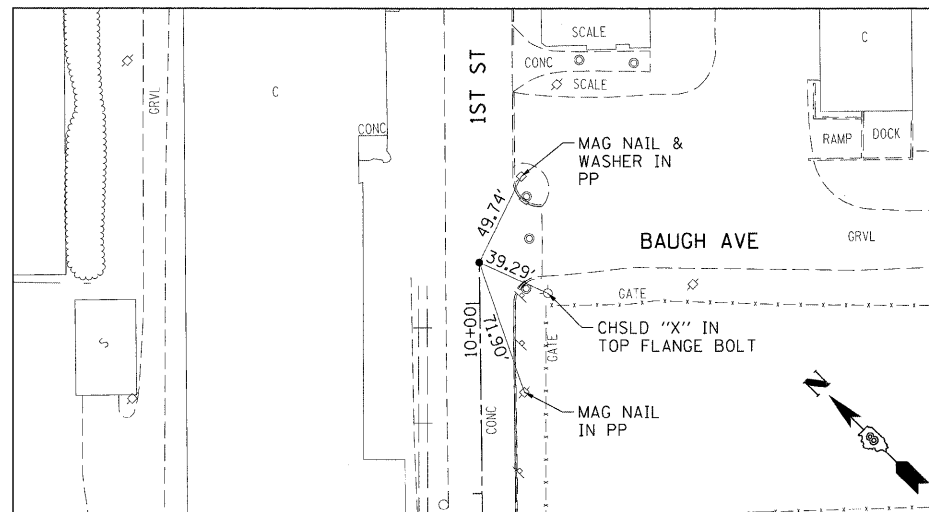
55S70W  
PT STA 87+95.40  
SET 5/8" REBAR W/RED LIN ENG. CAP FLUSH W/GR



1ST STREET  
POT STA 5+00  
MAG NAIL INSIDE CHSLD "X"



1ST STREET  
POT STA 10+21.57  
5/8" I.P. IN CONC PAVT



BENCHMARKS

BENCHMARK	DESCRIPTION	ELEVATION	STATION	OFFSET
0017-01	RR SPIKE IN PP W/LIGHT NW QUAD. ST. CLAIR & 1ST STREET	422.11	ST. CLAIR 86+61	30.0' LT
BM26	CHISELLED 'X' SOUTHERLY CAP BOLT FIRE HYDRANT AT NORTH QUADRANT 2ND ST. & ST. CLAIR AVE	423.65	I-70 EB/I-55 NB 51+42	210' RT
BM27	CHISELLED 'X' SOUTHERLY CAP BOLT FIRE HYDRANT AT NORTH QUADRANT 2ND STREET AND BAUGH AVE.	419.77	I-55 SB/I-70 WB 86+27	190' RT

FILE NAME =  
D8TR1-76C45-sh1-ATB-11.dgn

USER NAME = micoconach

DESIGNED -

REVISED -

DRAWN -

REVISED -

PLOT SCALE = 50.0000' / 1" =

CHECKED -

REVISED -

PLOT DATE = 2/2/2012

DATE - 2/2/2012

REVISED -

STATE OF ILLINOIS  
DEPARTMENT OF TRANSPORTATION

ALIGNMENT, TIES AND BENCHMARKS

SCALE: N/A

SHEET NO. 11 OF 11 SHEETS

STA. N/A TO STA. N/A

F.A.I. RTE.

SECTION

COUNTY

TOTAL SHEETS

SHEET NO.

82-1SG

ST. CLAIR

145

21

\*998/70/64

CONTRACT NO. 76C45

FED. ROAD DIST. NO. ILLINOIS FED. AID PROJECT