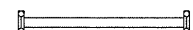
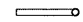

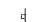
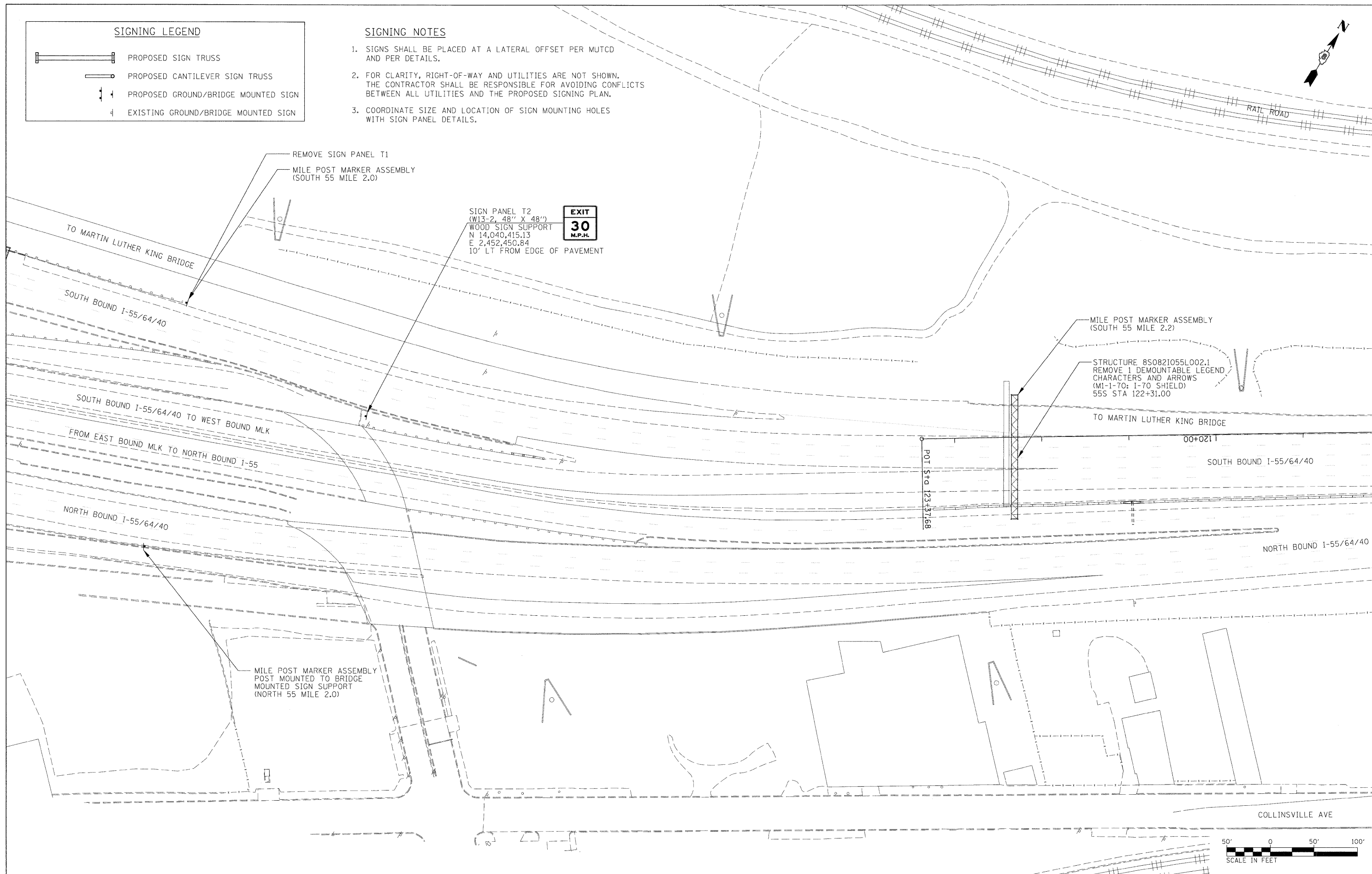
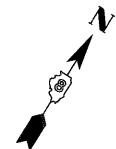


SIGNING LEGEND

-  PROPOSED SIGN TRUSS
-  PROPOSED CANTILEVER SIGN TRUSS
-  PROPOSED GROUND/BRIDGE MOUNTED SIGN
-  EXISTING GROUND/BRIDGE MOUNTED SIGN

SIGNING NOTES

1. SIGNS SHALL BE PLACED AT A LATERAL OFFSET PER MUTCD AND PER DETAILS.
2. FOR CLARITY, RIGHT-OF-WAY AND UTILITIES ARE NOT SHOWN. THE CONTRACTOR SHALL BE RESPONSIBLE FOR AVOIDING CONFLICTS BETWEEN ALL UTILITIES AND THE PROPOSED SIGNING PLAN.
3. COORDINATE SIZE AND LOCATION OF SIGN MOUNTING HOLES WITH SIGN PANEL DETAILS.



SIGN PANEL T2
(W13-2, 48" X 48")
WOOD SIGN SUPPORT
N 14,040,415.13
E 2,452,450.84
10' LT FROM EDGE OF PAVEMENT



MILE POST MARKER ASSEMBLY
(SOUTH 55 MILE 2.2)

STRUCTURE 8S0821055L002.1
REMOVE 1 DEMOUNTABLE LEGEND
CHARACTERS AND ARROWS
(M1-1-70: I-70 SHIELD)
55S STA 122+31.00

MILE POST MARKER ASSEMBLY
POST MOUNTED TO BRIDGE
MOUNTED SIGN SUPPORT
(NORTH 55 MILE 2.0)



FILE NAME = D8TR1-76C45-shr-sign9.dgn	USER NAME = mccconachie	DESIGNED - PMK	REVISED -
		DRAWN - PMK	REVISED -
		CHECKED - MPW	REVISED -
		DATE - 2/2/2012	REVISED -

**STATE OF ILLINOIS
DEPARTMENT OF TRANSPORTATION**

SIGNING PLAN

SCALE: 1" = 50' SHEET NO. 9 OF 29 SHEETS STA. N/A TO STA. N/A

F.A.I. RTE.	SECTION	COUNTY	TOTAL SHEETS	SHEET NO.
•	82-15G	ST. CLAIR	145	31
+998/70/64			CONTRACT NO. 76C45	
FED. ROAD DIST. NO. [ILLINOIS] FED. AID PROJECT				