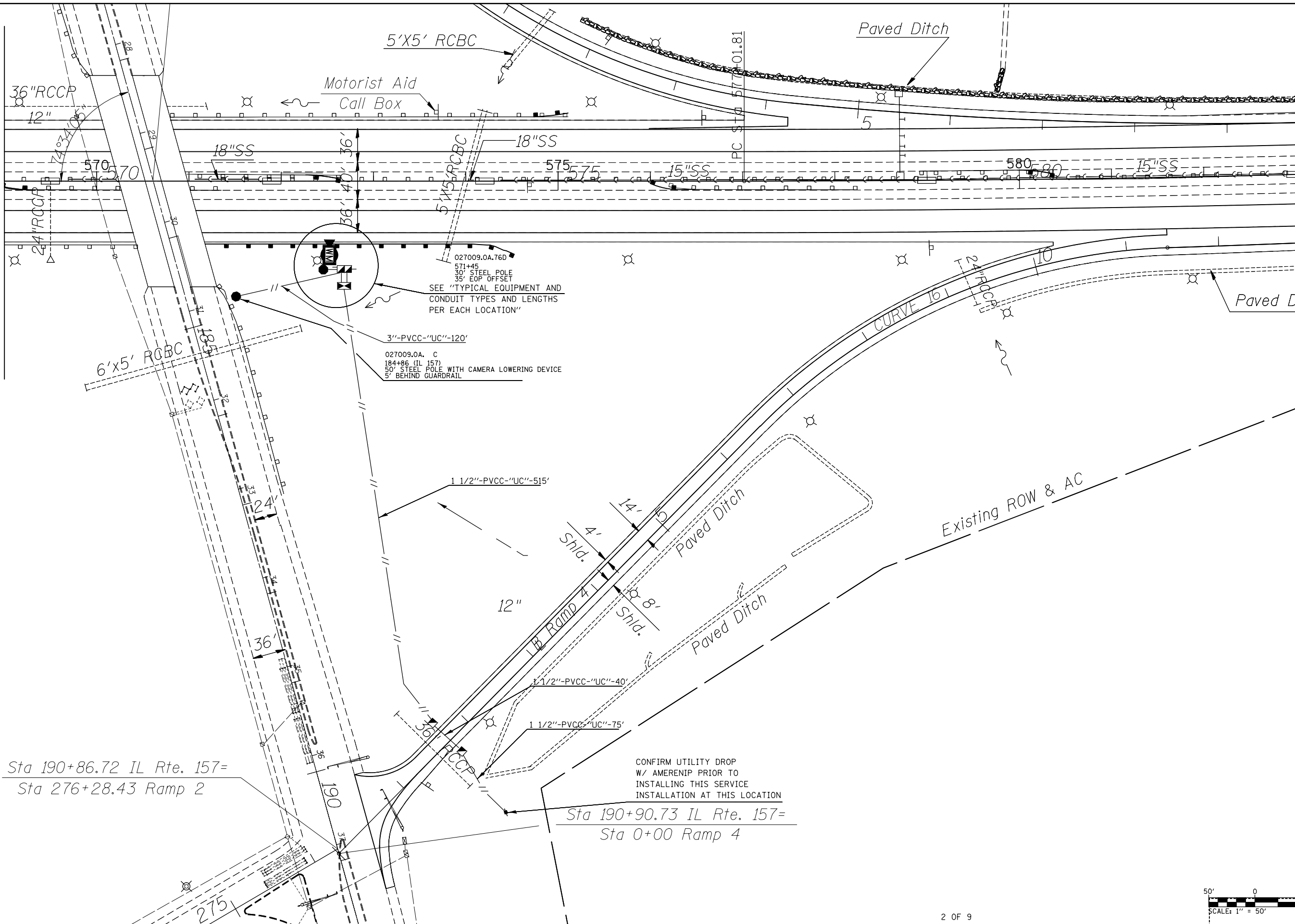




MATCHLINE 569+00

MATCHLINE 583+00

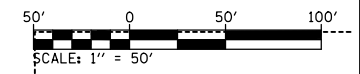


Sta 190+86.72 IL Rte. 157=
Sta 276+28.43 Ramp 2

Sta 190+90.73 IL Rte. 157=
Sta 0+00 Ramp 4

CONFIRM UTILITY DROP
W/ AMERENIP PRIOR TO
INSTALLING THIS SERVICE
INSTALLATION AT THIS LOCATION

Existing ROW & AC



2 OF 9

FILE NAME =	USER NAME = prestonm	DESIGNED -	REVISED -
et:\pwork\pwork\prestonm\d0279896\d0276f22-sht-ITS.dgn		DRAWN -	REVISED -
	PLOT SCALE = 100.0000' / 1in.	CHECKED -	REVISED -
	PLOT DATE = 2/2/2012	DATE -	REVISED -

**STATE OF ILLINOIS
DEPARTMENT OF TRANSPORTATION**

**ITS PLAN
LOCATION#1-STA. 571 + 45**

SCALE: SHEET NO. OF SHEETS STA. TO STA.

F.A.I. RTE.	SECTION	COUNTY	TOTAL SHEETS	SHEET NO.
270/70	DIST 8 ITS 2012-1	MADISON	23	11
FED. ROAD DIST. NO. ILLINOIS FED. AID PROJECT			CONTRACT NO. 76F22	