

STATE OF ILLINOIS
DEPARTMENT OF TRANSPORTATION
DIVISION OF HIGHWAYS

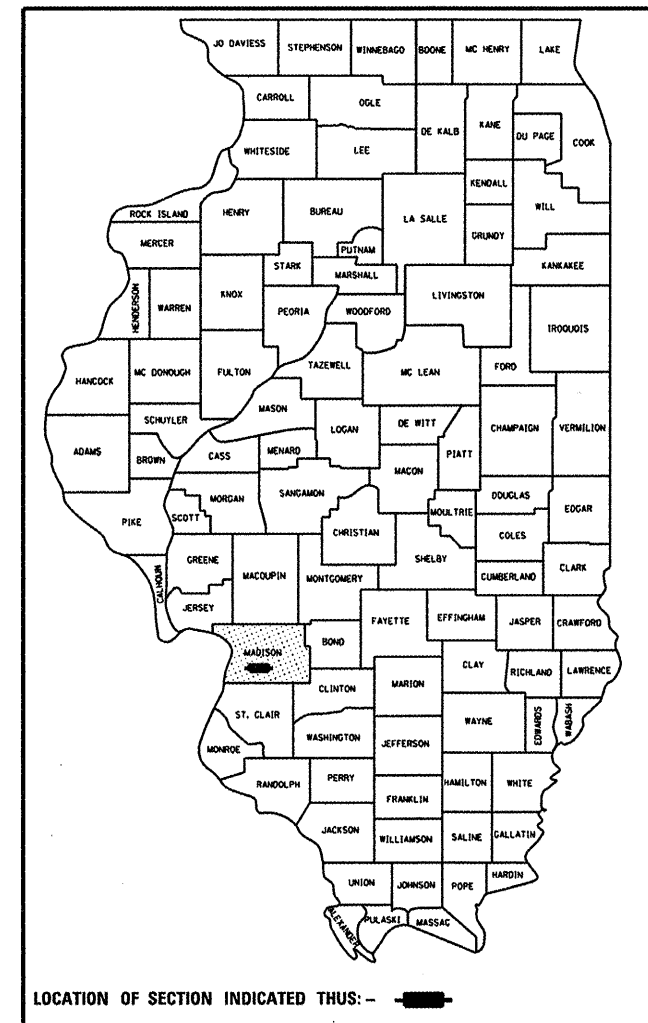
**PROPOSED
HIGHWAY PLANS**

FAI ROUTE 270 / FAI ROUTE 70 (I 270/I 70)
SECTION DIST 8 ITS 2012-1
PROJECT CMI-0005(878)
MADISON COUNTY

ITS COMMUNICATION, DETECTION AND SURVEILLANCE
DEVICES FROM I-270 STA. 571+20, EAST TO
I-70 STA. 1036+00, 1.6 MI. EAST OF THE I-55/70/270 (3-I)
INTERCHANGE
C-98-013-12

F.A.I. RTE.	SECTION	COUNTY	TOTAL SHEETS	SHEET NO.
270/70	DIST 8 ITS 2012-1	MADISON	23	1
FED. ROAD DIST. NO.	ILLINOIS	CONTRACT NO. 76F22		

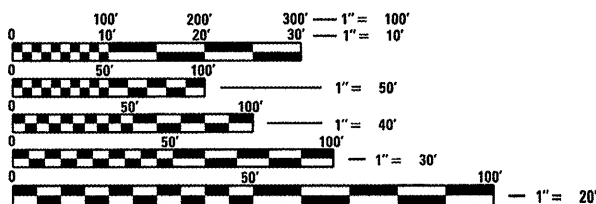
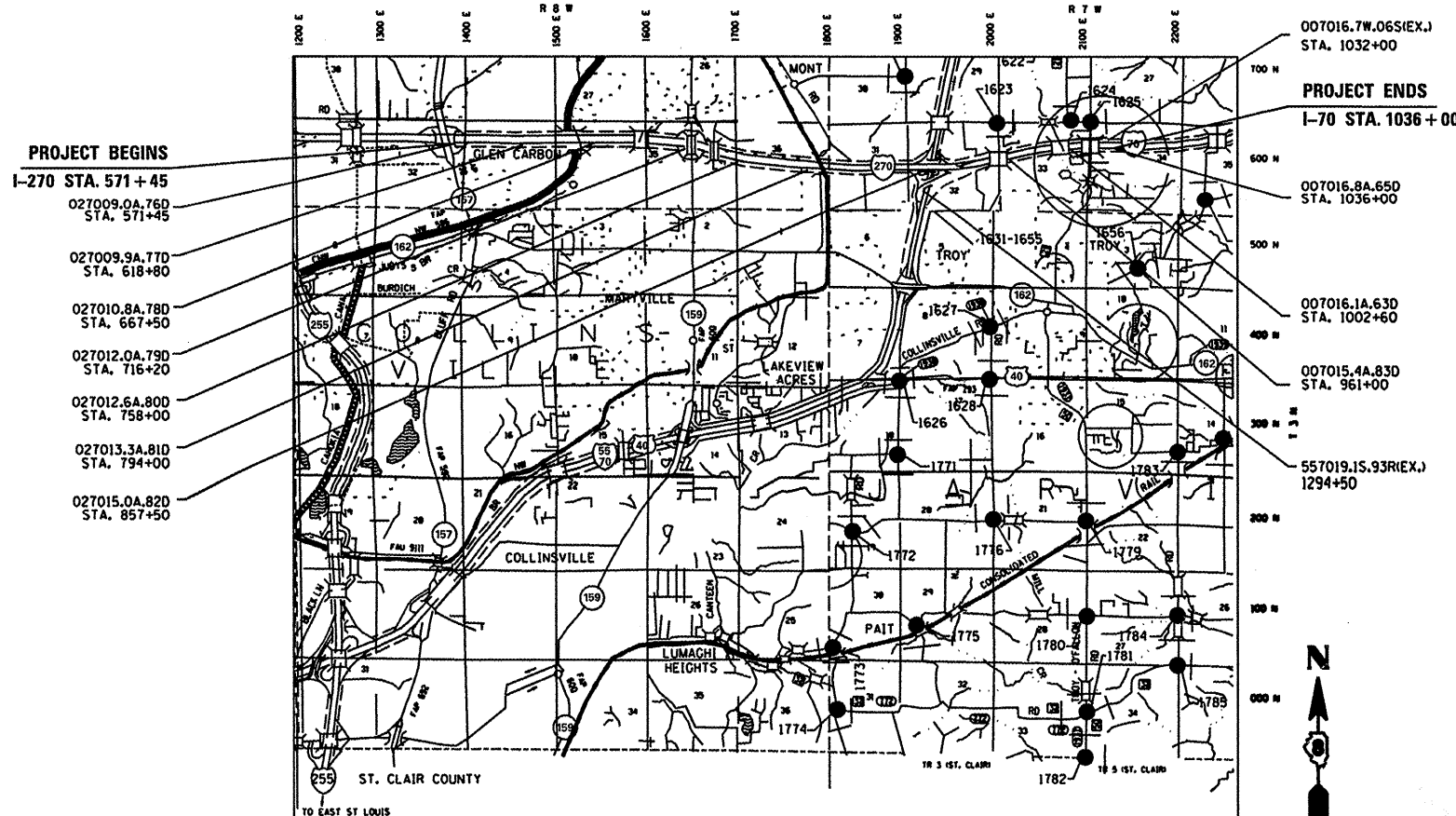
D-98-014-12



- INDEX OF SHEETS**
1. COVER SHEET
 2. GENERAL NOTES AND LEGEND
 - 3-4. SUMMARY OF QUANTITIES
 5. TRAFFIC DATA SCHEDULE, LANE RESTRICTIONS SCHEDULE AND TRAFFIC CONTROL AND PROTECTION SCHEDULE
 6. POLE MOUNTED CCTV DETAIL WITH CAMERA LOWERING DEVICE
 7. POLE MOUNTED CCTV DETAIL WITH CAMERA LOWERING DEVICE AND SERVICE INSTALLATION DETAILS
 8. RADAR VEHICLE DETECTION DETAIL
 9. ITS POLE LOCATION MAP
 - 10.-18. ITS PLANS 1-7 OF 7
 19. COMMUNICATION SHEET TYPICAL FOR ALL CONTROLLER CABINETS
 - 20.-23. SOIL BORING LOGS

STANDARDS

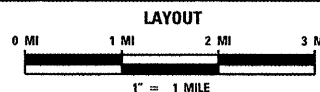
- | | | |
|-----------|-----------|-----------|
| 701101-02 | 701106-02 | 701400-05 |
| 701401-06 | 701456-02 | 701901-02 |
| 814001-02 | 814006-02 | 836001-01 |
| 878001-09 | | |



FULL SIZE PLANS HAVE BEEN PREPARED USING STANDARD ENGINEERING SCALES. REDUCED SIZED PLANS WILL NOT CONFORM TO STANDARD SCALES. IN MAKING MEASUREMENTS ON REDUCED PLANS, THE ABOVE SCALES MAY BE USED.

J.U.L.I.E.
JOINT UTILITY LOCATION INFORMATION FOR EXCAVATION
1-800-892-0123
OR 811

PROJECT ENGINEER: PATTI LeBEAU (618)-346-3179
SQUAD LEADER: MICHAEL PRESTON (618) 346-3143
LIAISON ENGINEER: LINDA LEONARD (618) 346-3285
CONTRACT NO. 76F22



STATE OF ILLINOIS
DEPARTMENT OF TRANSPORTATION
DIVISION OF HIGHWAYS

SUBMITTED February 1 20 12
John D. Baranzelli
DEPUTY DIRECTOR OF HIGHWAYS, REGION 5 ENGINEER

March 23 20 12
John D. Baranzelli, P.E.
ENGINEER OF DESIGN AND ENVIRONMENT

March 23 20 12
William R. Frey
DIRECTOR OF HIGHWAYS, CHIEF ENGINEER

PRINTED BY THE AUTHORITY
OF THE STATE OF ILLINOIS

PLOT DATE = 2/1/2012
 PLOT SCALE = 1/8" = 100'-0"
 REFERENCE = WREFS

LEGEND

ALUM	ALUMINUM
EP	EDGE OF PAVEMENT
TW SH	TWISTED SHIELDED
PWR CBL	POWER CABLE
F.O.	FIBER OPTIC
J.B.	JUNCTION BOX
GSC	GALVANIZED STEEL CONDUIT
PVCC	POLYVINYL CHLORIDE CONDUIT
FGC	FIBER GLASS CONDUIT
	EXISTING HANDHOLE
	EXISTING DOUBLE HANDHOLE
	EXISTING CONTROLLER
	EXISTING SERVICE INSTALLATION
	EXISTING GALVANIZED STEEL CONDUIT
	EXISTING JUNCTION BOX
	EXISTING SIGN TRUSS
	EXISTING HIGHWAY LIGHTING UNIT
	EXISTING UNDERGROUND LIGHTING CABLES
	PROPOSED HANDHOLE
	PROPOSED DOUBLE HANDHOLE
	PROPOSED CONTROLLER
	PROPOSED CONDUIT: "UC" UNDERGROUND CONDUIT "ATS" ATTACHED TO STRUCTURE, SIZE SPECIFIED
	PROPOSED SERVICE INSTALLATION
	PROPOSED CCTV CAMERA
	PROPOSED JUNCTION BOX, SIZE SPECIFIED
	PROPOSED WOOD POLE, SIZE SPECIFIED
	PROPOSED DETECTION SYSTEM (MICROLOOPS)
	PROPOSED LIGHT POLE, SIZE SPECIFIED
	PROPOSED CHANGEABLE MESSAGE SIGN
	PROPOSED VIDEO DETECTION CAMERA
	PROPOSED HIGHWAY ADVISORY RADIO
	PROPOSED RADAR VEHICLE DETECTOR

GENERAL NOTES

- CCTV ARE LOCATION SENSITIVE. PROPOSED EQUIPMENT LOCATIONS ARE APPROXIMATE. TO ENSURE THE OPTIMUM FIELD OF VIEW, ACTUAL LOCATIONS SHALL BE DETERMINED IN THE FIELD BY THE CONTRACTOR, PER THE MANUFACTURER REPRESENTATIVES' RECOMMENDATIONS AND THE ENGINEER'S APPROVAL. MR. JEFF ABEL OF BUREAU OF OPERATIONS SHALL BE CONTACTED FOR ACTUAL CAMERA LOCATION VERIFICATION.
- ALL MATERIALS SUPPLIED SHALL CONFORM TO SECTION 106 OF THE STANDARD SPECIFICATIONS FOR CONTROL OF MATERIALS.
- THE CONTROLLER CABINETS AND JUNCTION BOXES SHALL BE UNPAINTED ALUMINUM SHEET METAL UNLESS OTHERWISE SPECIFIED ON THE PLANS.
- UNDERGROUND CABLE MARKING TAPE SHALL BE INSTALLED WITH ALL TRENCH AND BACKFILL FOR ELECTRICAL WORK IN ACCORDANCE WITH ARTICLES 819.05 AND 1066.05 OF THE STANDARD SPECIFICATIONS.
- THE CONTRACTOR SHALL NOT DRILL ANY HOLES IN THE BEAMS, DECK, OR SUBSTRUCTURE OF THE BRIDGE. UNLESS OTHERWISE APPROVED BY THE ENGINEER.
- ALL GROUND RODS SUPPLIED FOR THIS PROJECT SHALL BE IN ACCORDANCE WITH ARTICLE 1087.01 EXCEPT THAT THEY SHALL BE 3/4" DIAMETER X 12'-0" LONG. ALL CONNECTIONS TO GROUND RODS SHALL BE MADE VIA EXOTHERMIC WELD, COMPRESSION CLAMPS WILL NOT BE ALLOWED.

THIS EXCEPTION HOLDS OVER LIGHT POLE FOUNDATION HIGHWAY STANDARD 836001.
- COORDINATION WITH THE DEPARTMENT'S BUREAU OF OPERATIONS IS REQUIRED BEFORE ANY TRENCHING SHALL BE DONE TO LOCATE HIGHWAY LIGHTING/PUMP STATION/ITS FACILITIES AND TO COORDINATE OTHER FIELD ACTIVITIES.
- ALL HANDHOLES SHALL BE CONSTRUCTED OF PORTLAND CEMENT CONCRETE PER SECTION 814 OF THE STANDARD SPECIFICATIONS. THE LEGEND ON THE COVER SHALL BE "ITS". SLOPE HANDHOLE TO MATCH FINAL GRADE ELEVATION.
- ALL UTILITIES AND DRAINAGE STRUCTURES SHALL BE LOCATED IN THE FIELD PRIOR TO ANY ATTEMPT TO CONSTRUCT ANY COMPONENT OF THE VARIOUS CCTV CAMERA SYSTEMS AND VEHICLE DETECTION SYSTEMS. THE COST FOR LOCATING DRAINAGE STRUCTURES SHALL BE INCLUDED IN THE CONTRACT UNIT PRICE FOR TRENCH AND BACKFILL FOR ELECTRICAL WORK (SEE INLET AND PIPE PROTECTION SCHEDULE).
- ILLINOIS STATE LAW REQUIRES A 48-HOUR NOTICE BE GIVEN TO UTILITIES BEFORE DIGGING. FIELD MARKING OF FACILITIES MAY BE OBTAINED BY CONTACTING J.U.L.I.E. OR FOR NON-MEMBERS, THE UTILITY COMPANY DIRECTLY. AGENCIES KNOWN TO HAVE FACILITIES WITHIN THE PROJECT AREA ARE AS FOLLOWS:
 AMEREN ILLINOIS (GAS & ELECTRIC)*
 AT&T ILLINOIS (COMMUNICATIONS)*
 BOND MADISON WATER COMPANY (WATER)*
 BUCKEYE PARTNERS L.P.--WOOD RIVER PIPELINE (PIPELINE)*
 CENTERPOINT ENERGY (PIPELINE)*
 CHARTER COMMUNICATIONS, INC. (CABLE TV)*
 CONSOLIDATED COMMUNICATIONS, INC. (COMMUNICATIONS)*
 VILLAGE OF GLEN CARBON WATER & SANITARY (SEWER)*
 ILLINOIS AMERICAN WATER COMPANY (WATER)*
 LEVEL 3 COMMUNICATIONS, LLC (COMMUNICATIONS)*
 SOUTHWESTERN ELECTRIC COOPERATIVE, INC. (ELECTRIC)*
 CITY OF TROY WATER & SANITARY (SEWER)*

 (MEMBER OF J.U.L.I.E. (800-892-0123) ARE INDICATED BY "*". NON J.U.L.I.E. MEMBERS MUST BE NOTIFIED INDIVIDUALLY.)
- A 9-1-1 ADDRESS MUST BE OBTAINED FROM THE MADISON COUNTY 9-1-1 COORDINATOR PRIOR TO OBTAINING ELECTRIC/TELEPHONE SERVICE AT THE PROJECT LOCATIONS. THE CONTRACTOR SHALL NOTIFY THE RESIDENT ENGINEER/TECHNICIAN A MINIMUM OF SIX WEEKS IN ADVANCE OF THE ANTICIPATED DATE THAT ELECTRIC/TELEPHONE SERVICE WILL BE REQUIRED IN ORDER THAT THE NECESSARY ADDRESS CAN BE OBTAINED. IF THERE ARE ANY QUESTIONS REGARDING THE ABOVE, CONTACT THE 9-1-1 COORDINATOR AT 618-692-7040, EXT.5911 FOR MADISON COUNTY.
- FIELD MEASUREMENTS ARE REQUIRED TO VERIFY DIMENSIONS OF EXISTING STRUCTURES PRIOR TO ORDERING MOUNTING HARDWARE.

13. THE DEPARTMENT STRONGLY ENCOURAGES THE PRIME CONTRACTOR AND THEIR APPROVED SUB-CONTRACTORS TO HIRE MINORITY, WOMEN AND DISADVANTAGED INDIVIDUALS FROM ITS FEDERALLY FUNDED HIGHWAY CONSTRUCTION CAREERS TRAINING PROGRAM (HCCTP) TO HELP MEET WORKFORCE AND TRAINEE GOALS. THIS PROGRAM IS TRAINING MINORITIES, WOMEN AND DISADVANTAGED INDIVIDUALS IN HIGHWAY CONSTRUCTION-RELATED SKILLS, E.G., MATH FOR THE TRADES, JOB READINESS, TECHNICAL SKILLS COURSEWORK (CARPENTRY, CONCRETE FLATWORK, BLUEPRINT READING, SITE PLANS, SITE WORK, TOOLS USE, ETC.) AND OSHA 10 HOUR CERTIFICATION, TO PREPARE THEM FOR A CAREER IN THE HIGHWAY CONSTRUCTION TRADES. GRADUATES ARE WELL-TRAINED AND READY TO BECOME PRODUCTIVE ENTRY-LEVEL CONSTRUCTION WORKERS. CONTACT THE DISTRICT 8 EEO OFFICE AT 618-346-3360 AND/OR THE HCCTP COORDINATOR AT 618-874-6528 TO LEARN MORE ABOUT THE PROGRAM AND FOR ASSISTANCE IN MEETING WORKFORCE AND TRAINEE GOALS.

COMMITMENTS
NONE

FILE NAME =	USER NAME = prestonm	DESIGNED -	REVISED -	STATE OF ILLINOIS DEPARTMENT OF TRANSPORTATION	GENERAL NOTES, COMMITMENTS AND LEGEND	F.A.I. RTE.	SECTION	COUNTY	TOTAL SHEETS	SHEET NO.	
c:\pwork\pwork\prestonm\0279896\0279896-175.dgn	DRAWN -	REVISED -	270/70			DIST 8 ITS 2012-1	MADISON	23	2		
PLOT SCALE = 100.0000' / in.	CHECKED -	REVISED -	CONTRACT NO. 76F22								
PLOT DATE = 2/2/2012	DATE -	REVISED -	FED. ROAD DIST. NO. ILLINOIS FED. AID PROJECT								
						SCALE:	SHEET NO. OF SHEETS	STA. TO STA.			

ILLINOIS DEPARTMENT OF TRANSPORTATION			URBAN TOTAL QUANTITIES	CONSTRUCTION TYPE CODE									
SUMMARY OF QUANTITIES				I-270							I-70		
CODE NO	ITEM	UNIT		MP 9.0	MP 9.9	MP 10.8	MP 12.0	MP 12.6	MP 13.3	MP 15.0	MP 15.4	MP 16.1	MP 16.8
67100100	MOBILIZATION	L SUM	1	0.1	0.1	0.1	0.1	0.1	0.1	0.1	0.1	0.1	
70100800	TRAFFIC CONTROL AND PROTECTION, STANDARD 701401	L SUM	1									1	
70100825	TRAFFIC CONTROL AND PROTECTION, STANDARD 701456	L SUM	1	0.25			0.25			0.5			
80300100	LOCATING UNDERGROUND CABLE	FOOT	5069	670	40	40	755	50	50	1485	1494	40	445
80500100	SERVICE INSTALLATION, TYPE A	EACH	8	1	1	1	1	1	1	1	1	1	
81028340	UNDERGROUND CONDUIT, PVC, 1 1/2" DIA.	FOOT	4939	630	30	30	745	40	40	1475	1484	30	435
81028370	UNDERGROUND CONDUIT, PVC, 3" DIA.	FOOT	130	40	10	10	10	10	10	10	10	10	10
81400700	HANDHOLE, PORTLAND CEMENT CONCRETE	EACH	7	2			2			2			1
81400720	DOUBLE HANDHOLE, PORTLAND CEMENT CONCRETE	EACH	11	1	1	1	1	1	1	1	1	1	2
81702130	ELECTRIC CABLE IN CONDUIT, 600V (XLP-TYPE USE) 1/C NO. 6	FOOT	235		43	43		53	53			43	
81702140	ELECTRIC CABLE IN CONDUIT, 600V (XLP-TYPE USE) 1/C NO. 4	FOOT	4903	656			771			1508	1520		448
83060800	LIGHT POLE, GALVANIZED STEEL, 30 FT. M. H., TENON MOUNT	EACH	1	1									

FILE NAME =	USER NAME = prestonne	DESIGNED -	REVISED -
e:\pwwork\pvidot\prestonne\d0279896\0776F22-ahc-ITS.dgn		DRAWN -	REVISED -
	PLOT SCALE = 100.0000' / in.	CHECKED -	REVISED -
	PLOT DATE = 2/2/2012	DATE -	REVISED -

STATE OF ILLINOIS
DEPARTMENT OF TRANSPORTATION

ITS SUMMARY OF QUANTITIES
1 OF 2

SCALE: SHEET NO. OF SHEETS STA. TO STA.

F.A.I. RTE.	SECTION	COUNTY	TOTAL SHEETS	SHEET NO.
270/70	DIST 8 ITS 2012-1	MADISON	23	3
			CONTRACT NO. 76F22	
ILLINOIS FED. AID PROJECT				

ILLINOIS DEPARTMENT OF TRANSPORTATION			URBAN TOTAL QUANTITIES	CONSTRUCTION TYPE CODE									
SUMMARY OF QUANTITIES				I-270							I-70		
CODE NO	ITEM	UNIT		MP 9.0	MP 9.9	MP 10.8	MP 12.0	MP 12.6	MP 13.3	MP 15.0	MP 15.4	MP 16.1	MP 16.8
83600300	LIGHT POLE FOUNDATION, 30" DIAMETER	FOOT	81	13	7	12	7	7	7	7	7	7	
87301715	ELECTRIC CABLE IN CONDUIT, COMMUNICATION NO. 18 6 PAIR	FOOT	650	65	65	65	65	65	65	65	65	65	
87900100	DRILL EXISTING FOUNDATION	EACH	2						1			1	
X0325076	WIDE AREA NETWORK	L SUM	1	0.1	0.1	0.1	0.1	0.1	0.1	0.1	0.1	0.1	
X0325476	RADAR VEHICLE DETECTION SYSTEM	EACH	10	1	1	1	1	1	1	1	1	1	
X0325922	CELLULAR MODEM	EACH	10	1	1	1	1	1	1	1	1	1	
X0326091	LIGHT POLE, STEEL 50 FT. WITH CAMERA LOWERING SYSTEM	EACH	10	1	1	1	1	1	1	1	1	1	
X8630103	CONTROLLER CABINET TYPE III, SPECIAL	EACH	10	1	1	1	1	1	1	1	1	1	
X8780107	CONCRETE FOUNDATION (SPECIAL)	FOOT	40	4	4	4	4	4	4	4	4	4	
81028390	UNDERGROUND CONDUIT , PVC, 4" DIA.,	FOOT	2350	30	30	30	30	30	30	1530	30	30	580
* 66900200	NON-SPECIAL WASTE DISPOSAL	CU YD	310		155					155			
* 66900450	SPECIAL WASTE PLANS AND REPORTS	L SUM	1		0.5					0.5			
* 66900530	SOIL DISPOSAL ANALYSIS	EACH	2		1					1			

* SPECIALTY ITEM

FILE NAME = e:\pwork\pwork\prstonme\0279896\0276f22-sht-ITS.dgn	USER NAME = prstonme	DESIGNED -	REVISED -	STATE OF ILLINOIS DEPARTMENT OF TRANSPORTATION	ITS SUMMARY OF QUANTITIES 2 OF 2			F.A.I. RTE. 270/70	SECTION DIST 8 ITS 2012-1	COUNTY MADISON	TOTAL SHEETS 23	SHEET NO. 4	
PLOT SCALE = 100.0000' / 1"	CHECKED -	REVISED -	SCALE:					SHEET NO.	OF	SHEETS	STA.	TO STA.	CONTRACT NO. 76F22
PLOT DATE = 2/2/2012	DATE -	REVISED -	ILLINOIS FED. AID PROJECT										

TRAFFIC CONTROL AND PROTECTION ZONES

LOCATION #	1	2	3	4	5	6	7	8	9	10	11	12	13	14
ROAD	NB & SB IL 157 OVER TO EB I-270	IL 157 RAMP TO EB I-270 1+00 TO 19+00	EB I-270 570+00 TO 637+00	EB I-270 665+00 TO 702+00	I-270 EB RAMP TO IL 159 00+00 TO 19+00	EB I-270 705+00 TO 717+00	NB & SB IL 159 OVER TO EB I-270	EB I-270 736+00 TO 797+00	SB I-55 RAMP TO WB I-70	WB I-70 RAMP TO SB I-55/70	NB I-55/70 RAMP TO EB I-70 915+00 TO 963+00	EB I-70 963+00 TO 1014+00	EB I-70 1014+00 TO 1036+00	WB I-70 1032+00 TO TO 1036+00
YEAR	2012	2012	2012	2012	2012	2012	2012	2012	2012	2012	2012	2012	2012	2012
ADT (EST.)	17400	1300	20600	20600	4650	20600	20700	17400			7200	15200	15200	15200
SUZ	1.2	5	3.6	3.6	3.9	3.6	1.5	10.1			3.9	5.1	5.1	5.1
MUZ	1.9	2.5	17.5	17.5	2.3	17.5	1.1	16			27.1	23.8	25.2	23.8
LOCATION STA.	571+45	571+60	571+60 618+80	667+50	716+20	716+20	716+20	758+00 794+00 857+50	857+50	857+50	857+50	961+00 1002+60	1036+00	1036+00

I-270 LANE RESTRICTIONS SCHEDULE

SUNDAY									MONDAY									TUESDAY									WEDNESDAY																										
LANE RESTRICTIONS PERMITTED									NO LANE RESTRICTIONS PERMITTED									LANE RESTRICTIONS PERMITTED									NO LANE RESTRICTIONS PERMITTED									LANE RESTRICTIONS PERMITTED									NO LANE RESTRICTIONS PERMITTED								
12A	3A	5A	9A	10A	12P	3P	4P	6P	9P	12A	3A	5A	9A	12P	3P	6P	9P	12A	3A	5A	9A	12P	3P	6P	9P	12A	3A	5A	9A	12P																							
NO LANE RESTRICTIONS PERMITTED									LANE RESTRICTIONS PERMITTED									NO LANE RESTRICTIONS PERMITTED									LANE RESTRICTIONS PERMITTED									NO LANE RESTRICTIONS PERMITTED																	
12P 3P 6P 9P									12A 3A 5A 9A 12P 3P 6P 9P									12A 3A 5A 9A 12P 3P 6P 9P									12A 3A 5A 9A 12P																										

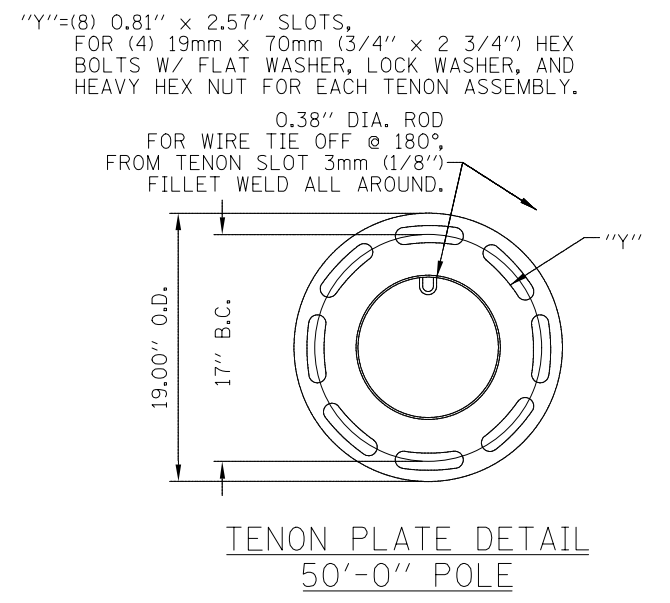
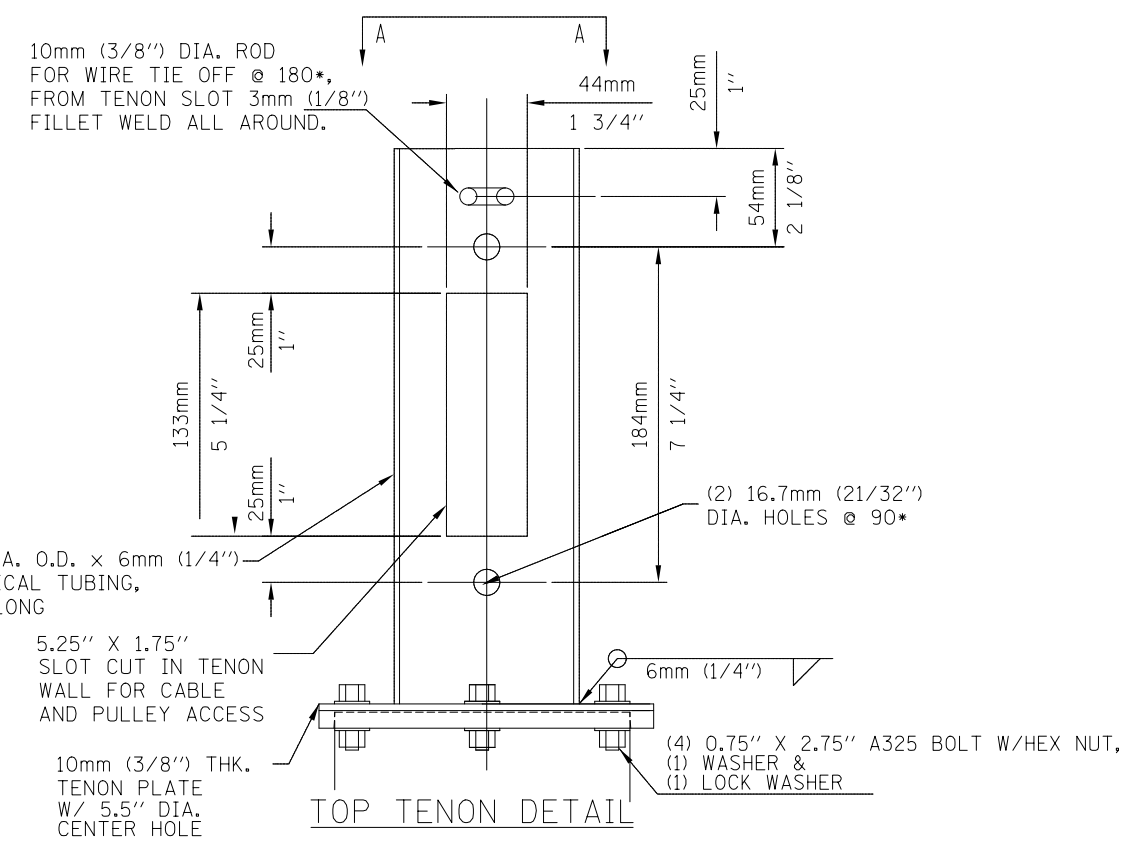
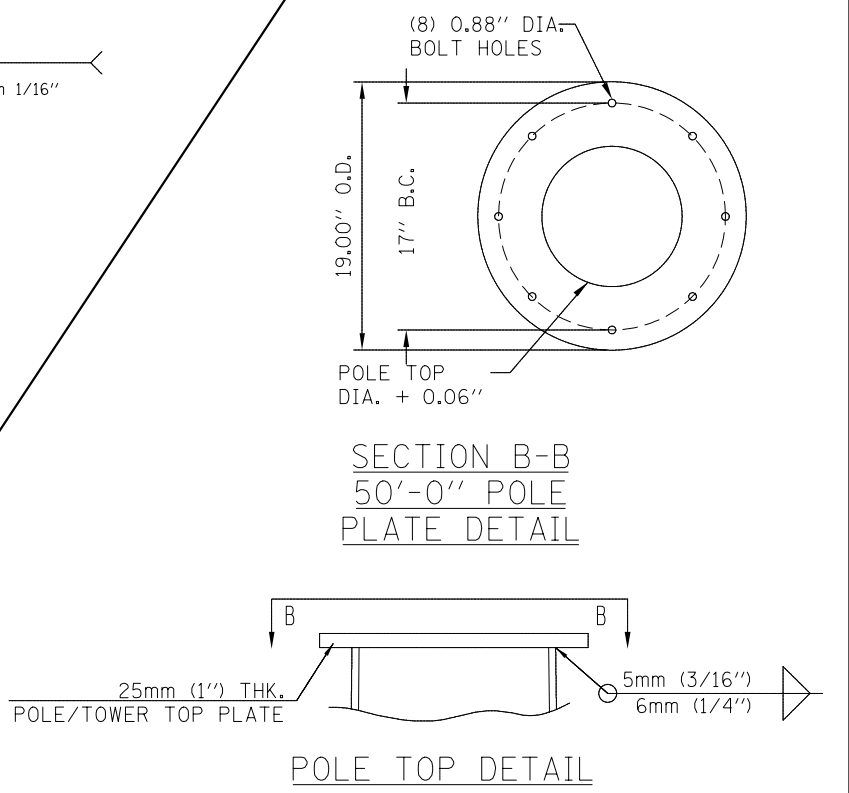
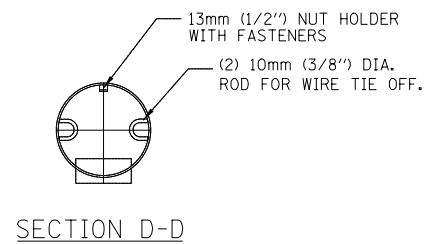
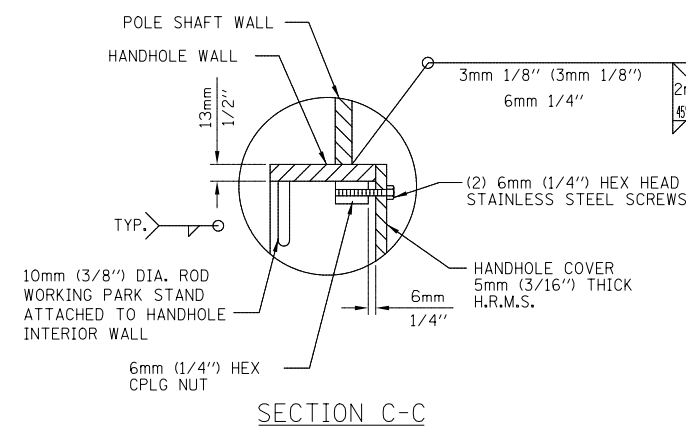
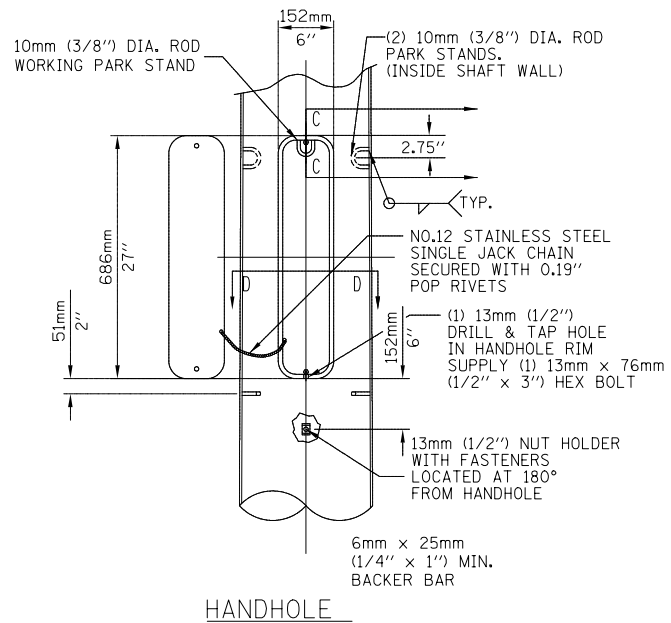
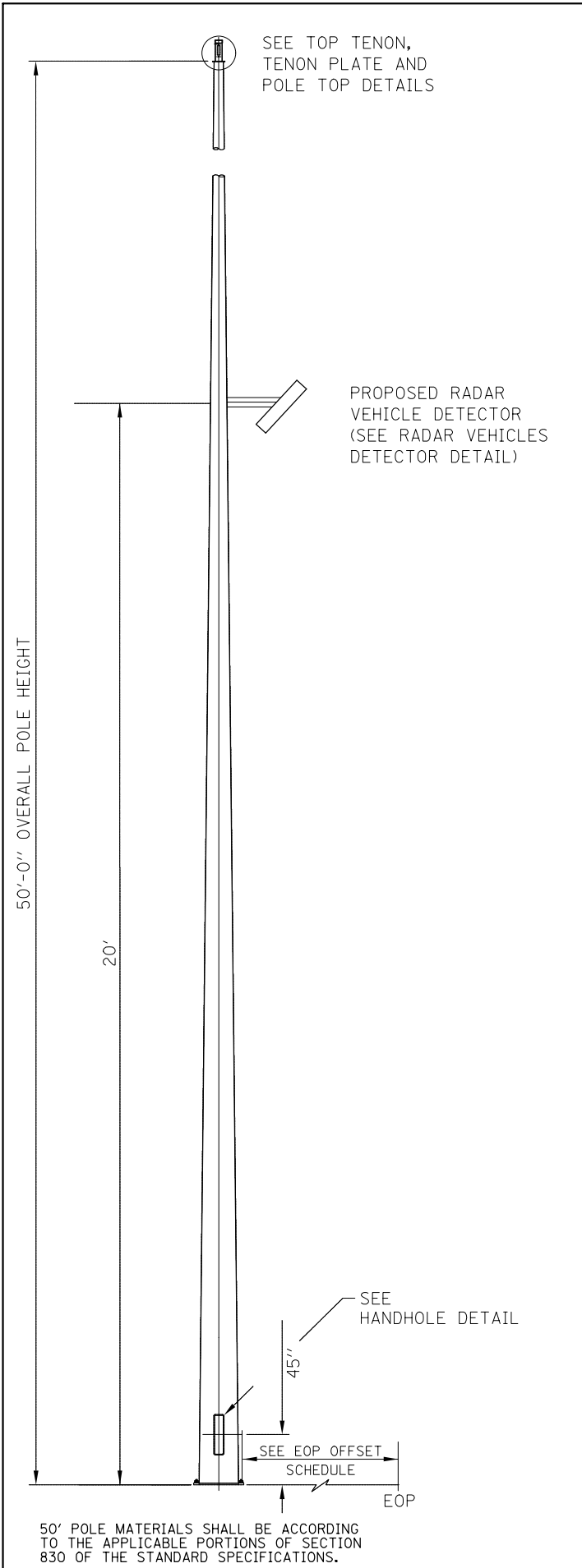
I-70 LANE RESTRICTIONS SCHEDULE

WB	MONDAY-FRIDAY	6:00A-9:00A: NO LANE RESTRICTIONS PERMITTED
EB	MONDAY-FRIDAY	3:00P-6:00A: NO LANE RESTRICTIONS PERMITTED

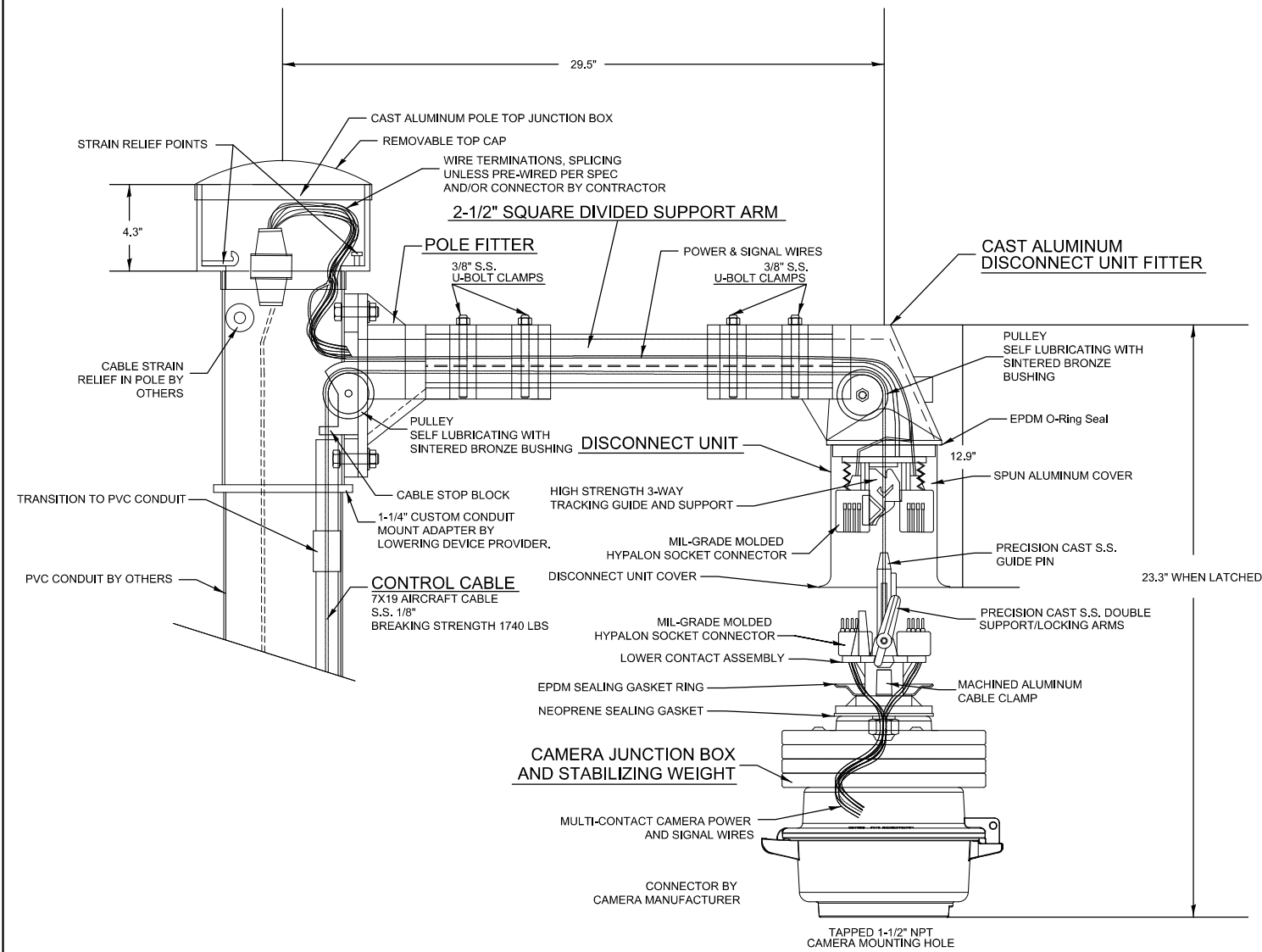
TRAFFIC CONTROL AND PROTECTION															TOTALS
TRAFFIC CONTROL AND PROTECTION STANDARDS	1	2	3	4	5	6	7	8	9	10	11	12	13	14	
701101	X	X	X	X	X	X	X	X	X	X	X	X	X	X	NM
701106	X	X	X	X	X	X	X	X	X	X	X	X	X	X	NM
701400														X	NM
701401*														1	1.0 L SUM
701456		0.25			0.25				0.25	0.25					1.0 L SUM

*USE 701400, ALSO

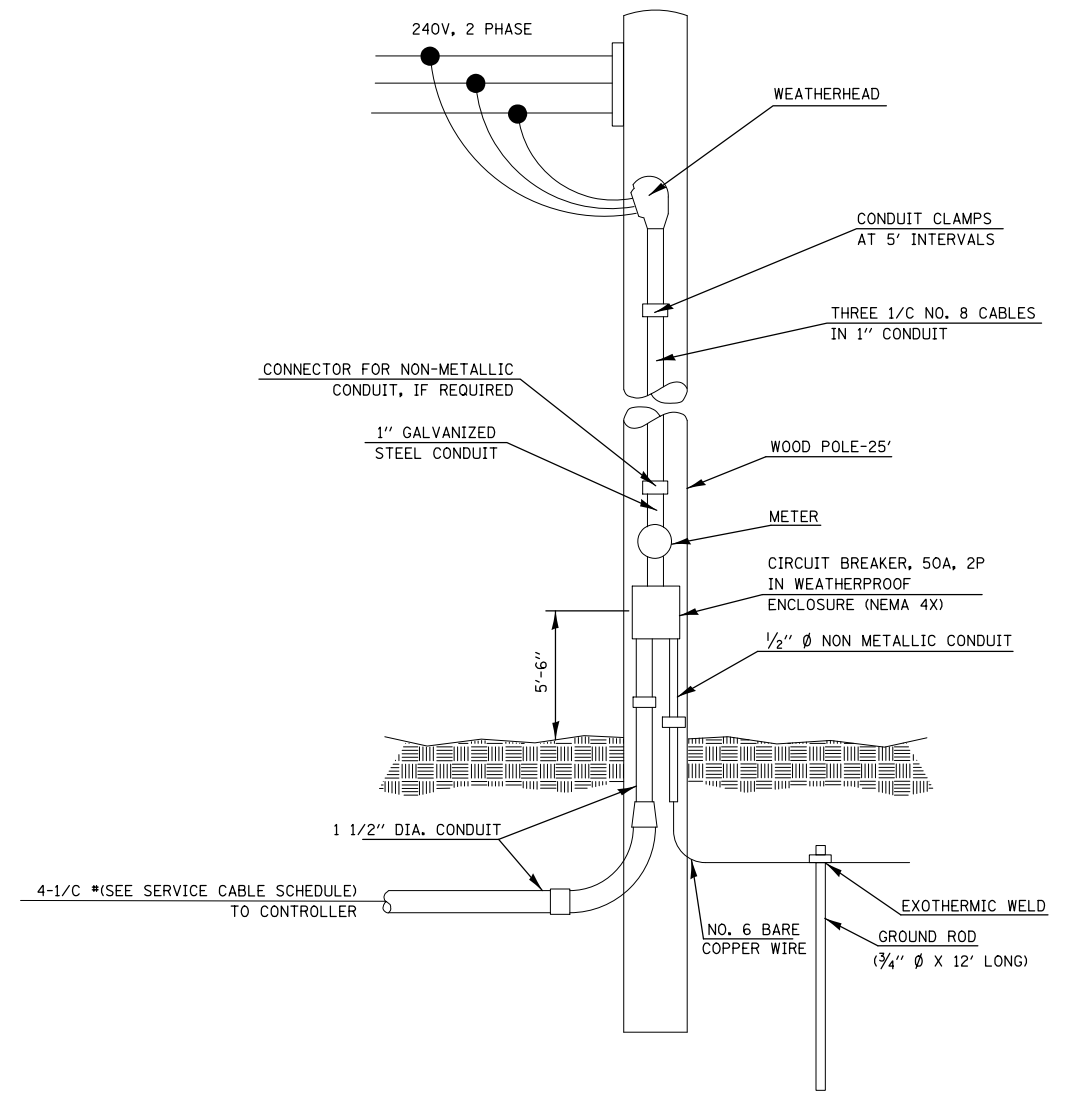
NM=NOT MEASURED



FILE NAME =	USER NAME = prestonme	DESIGNED -	REVISED -	STATE OF ILLINOIS DEPARTMENT OF TRANSPORTATION	POLE MOUNTED CCTV DETAIL WITH CAMERA LOWERING DEVICE				F.A.I. R.T.E.	SECTION	COUNTY	TOTAL SHEETS	SHEET NO.
et:\pw\work\p\dot\prestonme\d0279896\d076f22-sht-ITS.dgn	PLOT SCALE = 100.0000' / 1in.	DRAWN -	REVISED -						270/70	DIST 8 ITS 2012-1	MADISON	6	6
PLOT DATE = 3/7/2012	DATE -	CHECKED -	REVISED -		CONTRACT NO. 76F22				FED. ROAD DIST. NO.	ILLINOIS FED. AID PROJECT			
		DATE -	REVISED -		SCALE:	SHEET NO.	OF SHEETS	STA.	TO STA.				



CAMERA LOWERING DEVICE FOR POLE MOUNTING MULTI-FUNCTION SURVEILLANCE CAMERAS



SERVICE INSTALLATION, TYPE A

NOT TO SCALE

SERVICE CABLE SCHEDULE

MP 9.0	AWG #4
MP 9.9	AWG #6
MP 10.8	AWG #6
MP 12.0	AWG #4
MP 12.6	AWG #6
MP 13.3	AWG #6
MP 15.0	AWG #4
MP 15.4	AWG #4
MP 16.1	AWG #6
MP 16.8	AWG #6

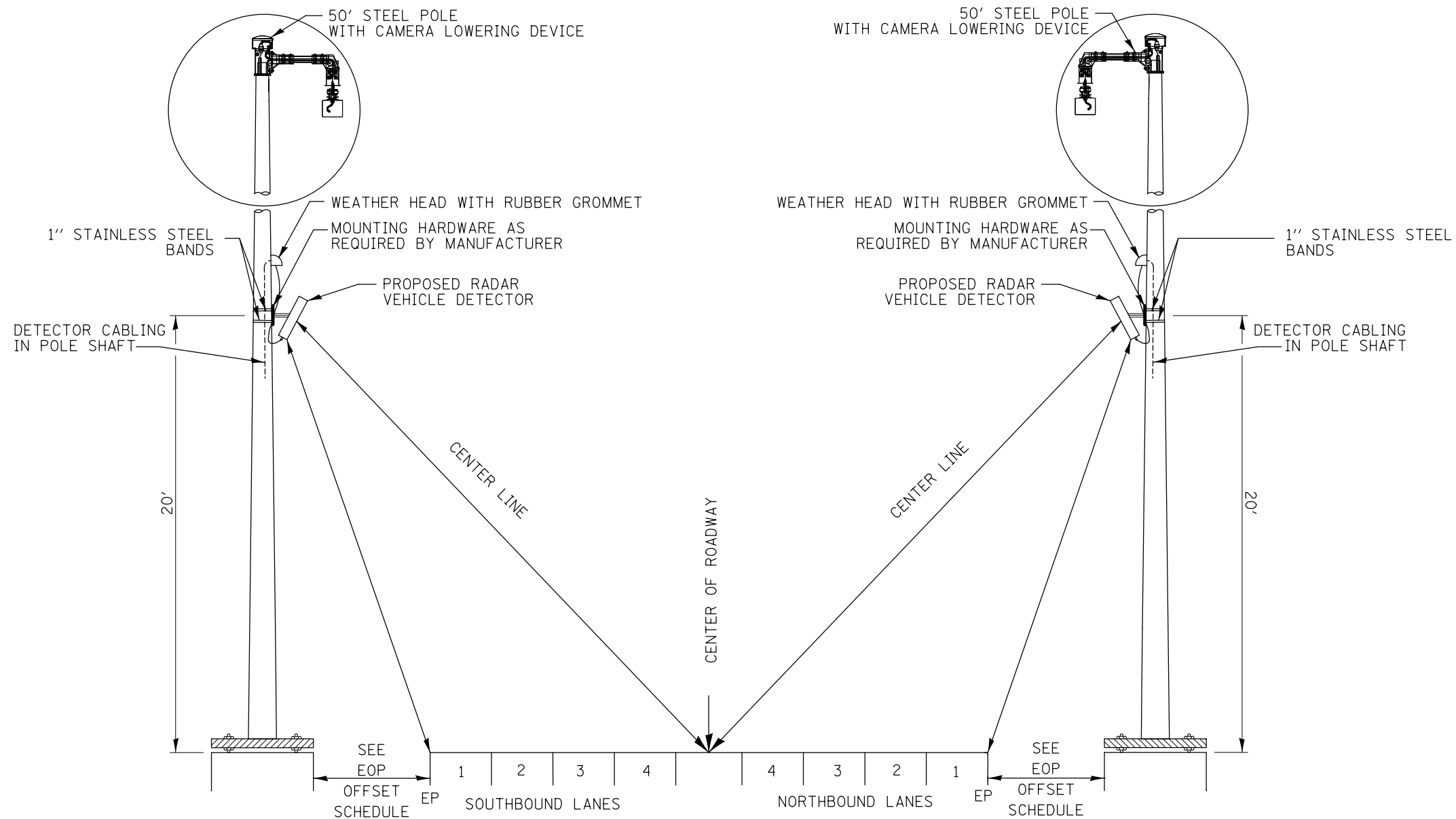
FILE NAME =	USER NAME = prestonme	DESIGNED -	REVISED -
et:\pw\work\pwi\dot\prestonme\d0279896\d076f22-sht-ITS.dgn		DRAWN -	REVISED -
	PLOT SCALE = 100.0000' / 1in.	CHECKED -	REVISED -
	PLOT DATE = 3/7/2012	DATE -	REVISED -

STATE OF ILLINOIS
DEPARTMENT OF TRANSPORTATION

POLE MOUNTED CCTV DETAIL WITH CAMERA LOWERING DEVICE
AND SERVICE INSTALLATION DETAILS

SCALE: SHEET NO. OF SHEETS STA. TO STA.

F.A.I. RTE.	SECTION	COUNTY	TOTAL SHEETS	SHEET NO.
270/70	DIST 8 ITS 2012-1	MADISON	7	7
CONTRACT NO. 76F22				
FED. ROAD DIST. NO. ILLINOIS FED. AID PROJECT				



**DETAIL
CCTV CAMERA AND RADAR VEHICLE DETECTOR**

NOT TO SCALE

LOCATIONS:

ITS ELEMENTS SCHEDULE					
CAMERA	STA.	EOP OFFSET	RADAR DETECTION	STA.	EOP OFFSET
(1) 027009.0A. C	184+86 LT (NB •)	5' BHGR	(2)027009.0A.76D	571+45 RT (EB)	35'
			(1)027009.9A.77D	618+80 RT (EB)	30'
			(1)027010.8A.78D	667+50 RT (EB)	30'
			(1)027012.0A.79D	716+20 RT (EB)	35'
			(1)027012.6A.80D	758+00 RT (EB)	30'
			(1)027013.3A.81D	794+00 RT (EB)	20'
			(1)027015.0A.82D	857+50 RT (EB)	20'
			(1)007015.4A.83D	961+00 LT (WB)	25'
			(1)007016.1A.63D	1002+60 RT (EB)	30'
			(1)007016.8A.65D	1036+00 RT (EB)	30'

•=IL 157 (1)=LIGHT POLE, STEEL 50 FT. WITH CAMERA LOWERING SYSTEM
BGR=BEHIND GUARDRAIL (2)=LIGHT POLE, GALVANIZED STEEL, 30 FT. M.H., TENON MOUNT

CAMERAS WILL BE INSTALL IN FUTURE BY OTHERS

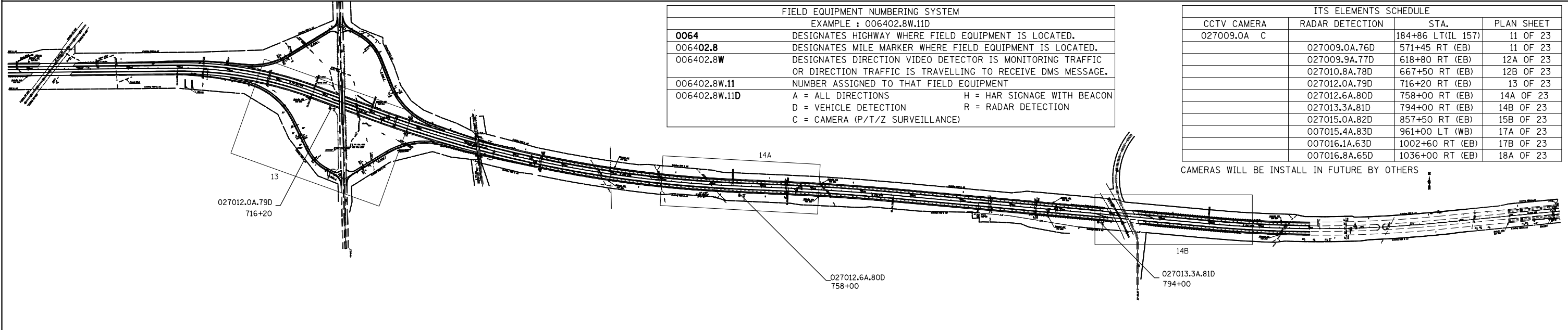
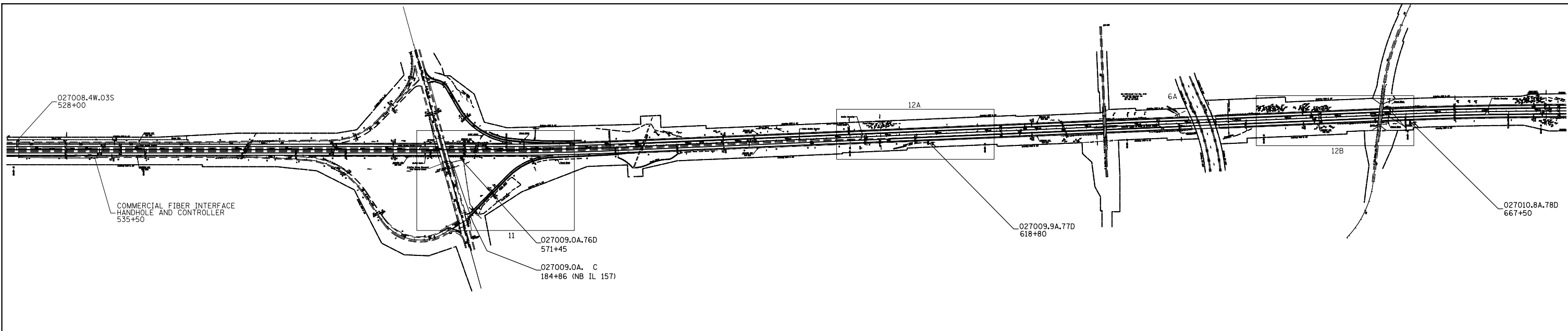
FILE NAME =	USER NAME = prestonme	DESIGNED -	REVISED -
et:\pw\work\p\dot\prestonme\d0279896\d0276f22-sht-ITS.dgn		DRAWN -	REVISED -
	PLOT SCALE = 100.0000' / 1in.	CHECKED -	REVISED -
	PLOT DATE = 2/2/2012	DATE -	REVISED -

**STATE OF ILLINOIS
DEPARTMENT OF TRANSPORTATION**

RADAR VEHICLE DETECTION DETAIL

SCALE: SHEET NO. OF SHEETS STA. TO STA.

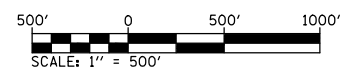
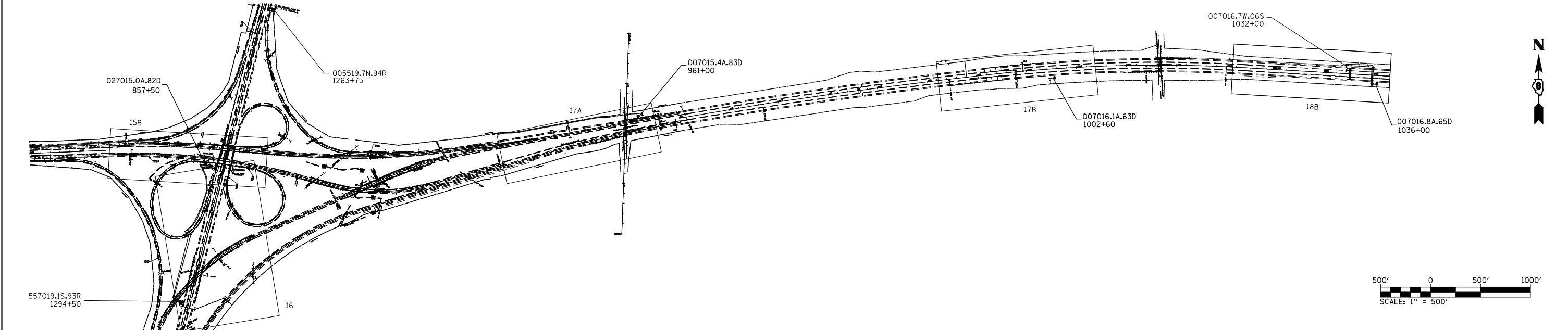
F.A.I. RTE.	SECTION	COUNTY	TOTAL SHEETS	SHEET NO.
270/70	DIST 8 ITS 2012-1	MADISON	8	8
CONTRACT NO. 76F22				
FED. ROAD DIST. NO. ILLINOIS FED. AID PROJECT				



FIELD EQUIPMENT NUMBERING SYSTEM	
EXAMPLE : 006402.8W.11D	
0064	DESIGNATES HIGHWAY WHERE FIELD EQUIPMENT IS LOCATED.
006402.8	DESIGNATES MILE MARKER WHERE FIELD EQUIPMENT IS LOCATED.
006402.8W	DESIGNATES DIRECTION VIDEO DETECTOR IS MONITORING TRAFFIC OR DIRECTION TRAFFIC IS TRAVELLING TO RECEIVE DMS MESSAGE.
006402.8W.11	NUMBER ASSIGNED TO THAT FIELD EQUIPMENT
006402.8W.11D	A = ALL DIRECTIONS H = HAR SIGNAGE WITH BEACON D = VEHICLE DETECTION R = RADAR DETECTION C = CAMERA (P/T/Z SURVEILLANCE)

ITS ELEMENTS SCHEDULE			
CCTV CAMERA	RADAR DETECTION	STA.	PLAN SHEET
027009.0A C		184+86 LT(IL 157)	11 OF 23
	027009.0A.76D	571+45 RT (EB)	11 OF 23
	027009.9A.77D	618+80 RT (EB)	12A OF 23
	027010.8A.78D	667+50 RT (EB)	12B OF 23
	027012.0A.79D	716+20 RT (EB)	13 OF 23
	027012.6A.80D	758+00 RT (EB)	14A OF 23
	027013.3A.81D	794+00 RT (EB)	14B OF 23
	027015.0A.82D	857+50 RT (EB)	15B OF 23
	007015.4A.83D	961+00 LT (WB)	17A OF 23
	007016.1A.63D	1002+60 RT (EB)	17B OF 23
	007016.8A.65D	1036+00 RT (EB)	18A OF 23

CAMERAS WILL BE INSTALL IN FUTURE BY OTHERS



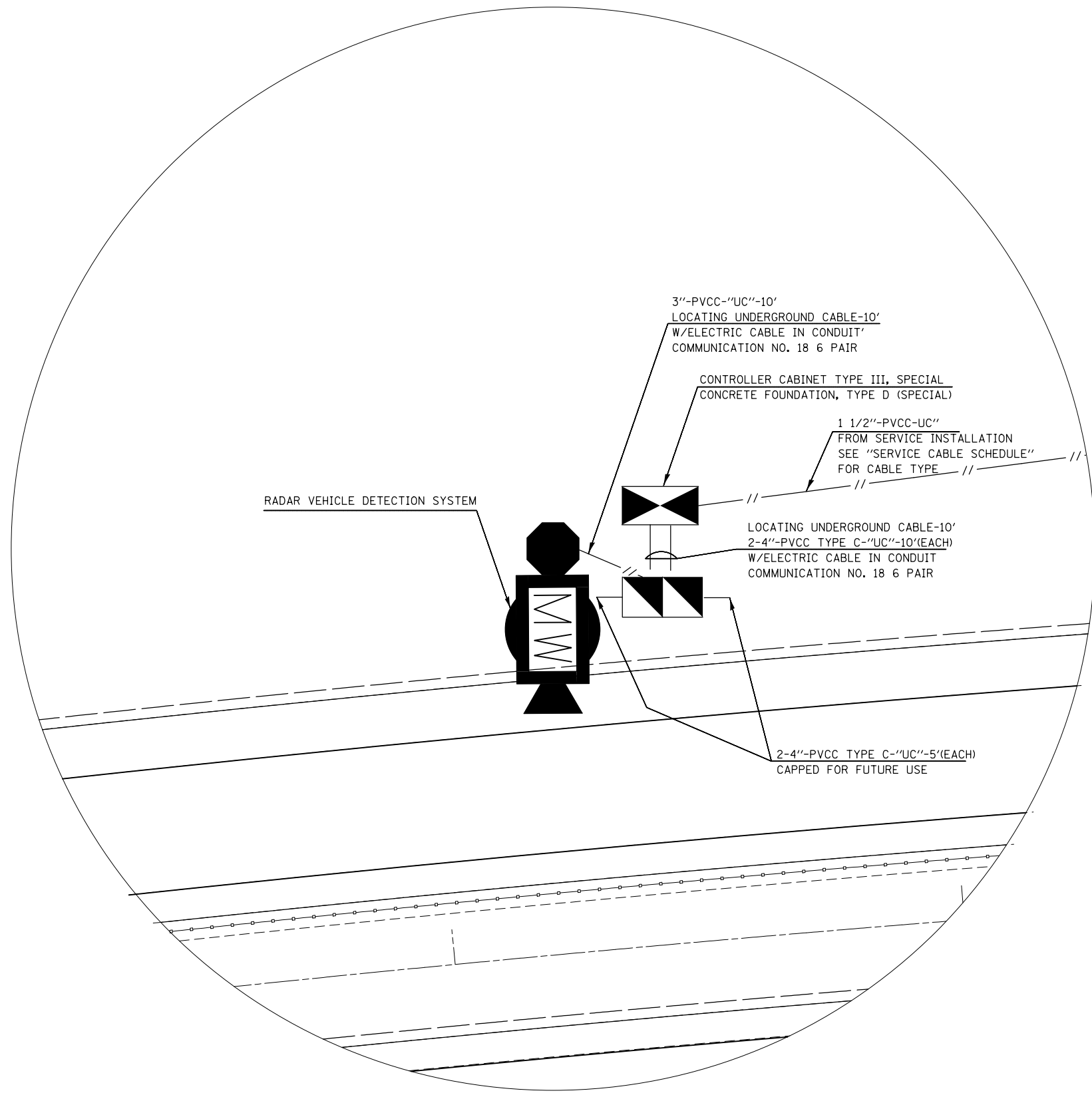
FILE NAME =	USER NAME = prestonme	DESIGNED -	REVISED -
et:\pwork\pwork\prestonme\d0279896\d076f22-sht-ITS.dgn		DRAWN -	REVISED -
	PLOT SCALE = 100.0000' / 1in.	CHECKED -	REVISED -
	PLOT DATE = 2/2/2012	DATE -	REVISED -

**STATE OF ILLINOIS
DEPARTMENT OF TRANSPORTATION**

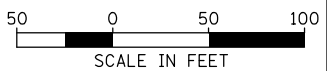
ITS POLE LOCATION MAP

SCALE: SHEET NO. OF SHEETS STA. TO STA.

F.A.I. RTE.	SECTION	COUNTY	TOTAL SHEETS	SHEET NO.
270/70	DIST 8 ITS 2012-1	MADISON	23	9
CONTRACT NO. 76F22				
ILLINOIS FED. AID PROJECT				



TYPICAL EQUIPMENT AND CONDUIT TYPES AND LENGTHS
PER EACH LOCATION



1 OF 9

FILE NAME =	USER NAME = prestonme	DESIGNED -	REVISED -
et:\pwork\pwork\prestonme\d0279896\d0279896\76F22-sht-ITS.dgn		DRAWN -	REVISED -
	PLOT SCALE = 100.0000' / 1in.	CHECKED -	REVISED -
	PLOT DATE = 2/2/2012	DATE -	REVISED -

**STATE OF ILLINOIS
DEPARTMENT OF TRANSPORTATION**

**ITS PLANS
TYPICAL EQUIPMENT AND CONDUIT TYPES AND LENGTHS
PER EACH LOCATION**

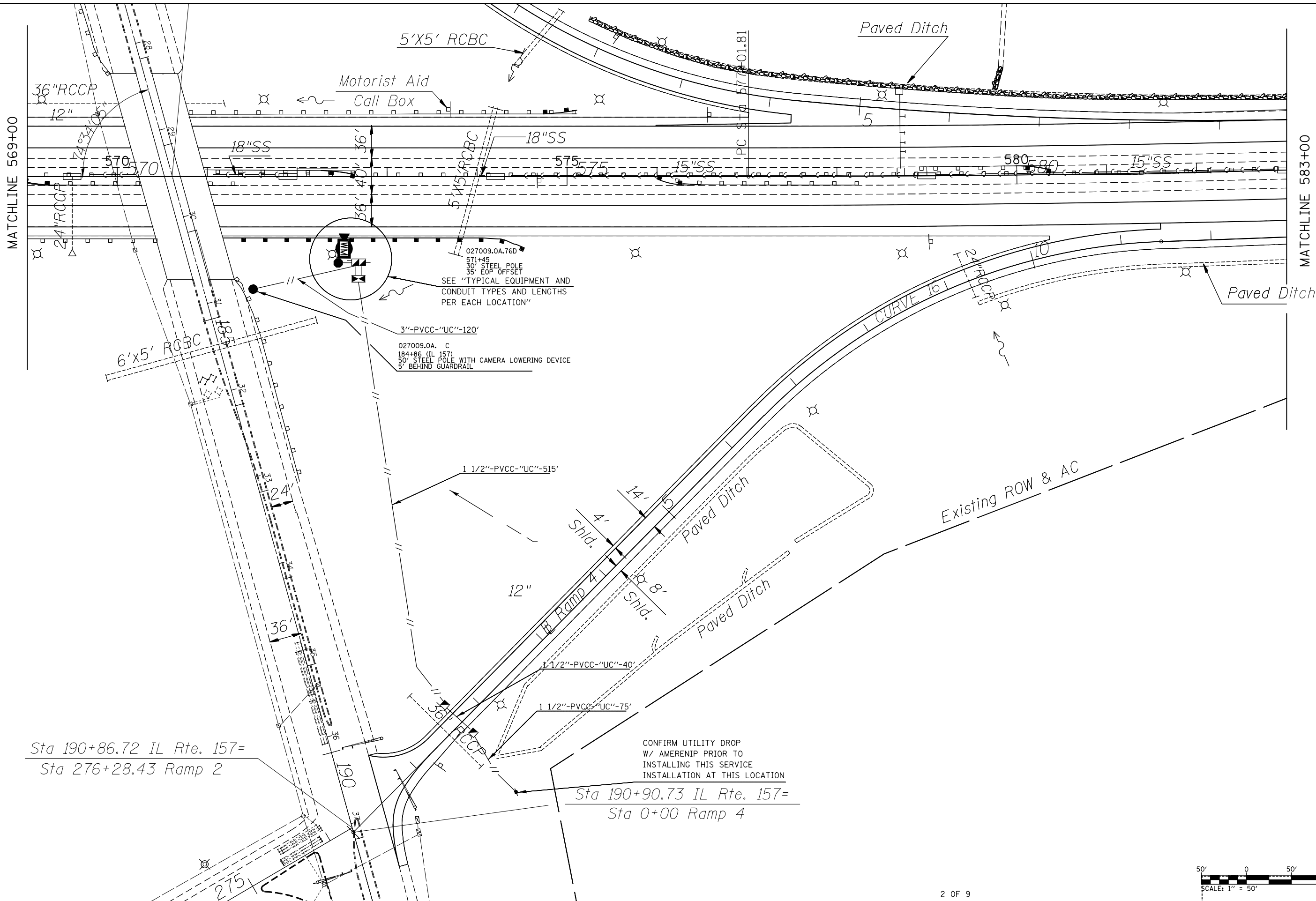
SCALE: 1' = 50' SHEET NO. OF SHEETS STA. TO STA.

F.A.I. RTE.	SECTION	COUNTY	TOTAL SHEETS	SHEET NO.
270/70	DIST 8 ITS 2012-1	MADISON	23	10
FED. ROAD DIST. NO. ILLINOIS FED. AID PROJECT			CONTRACT NO. 76F22	



MATCHLINE 569+00

MATCHLINE 583+00



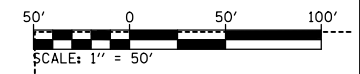
Sta 190+86.72 IL Rte. 157=
Sta 276+28.43 Ramp 2

Sta 190+90.73 IL Rte. 157=
Sta 0+00 Ramp 4

027009.OA.76D
571+45
30' STEEL POLE
35' EOP OFFSET
SEE "TYPICAL EQUIPMENT AND
CONDUIT TYPES AND LENGTHS
PER EACH LOCATION"

3"-PVCC-UC-120'
027009.OA. C
184+86 (IL 157)
50' STEEL POLE WITH CAMERA LOWERING DEVICE
5' BEHIND GUARDRAIL

CONFIRM UTILITY DROP
W/ AMERENIP PRIOR TO
INSTALLING THIS SERVICE
INSTALLATION AT THIS LOCATION



2 OF 9

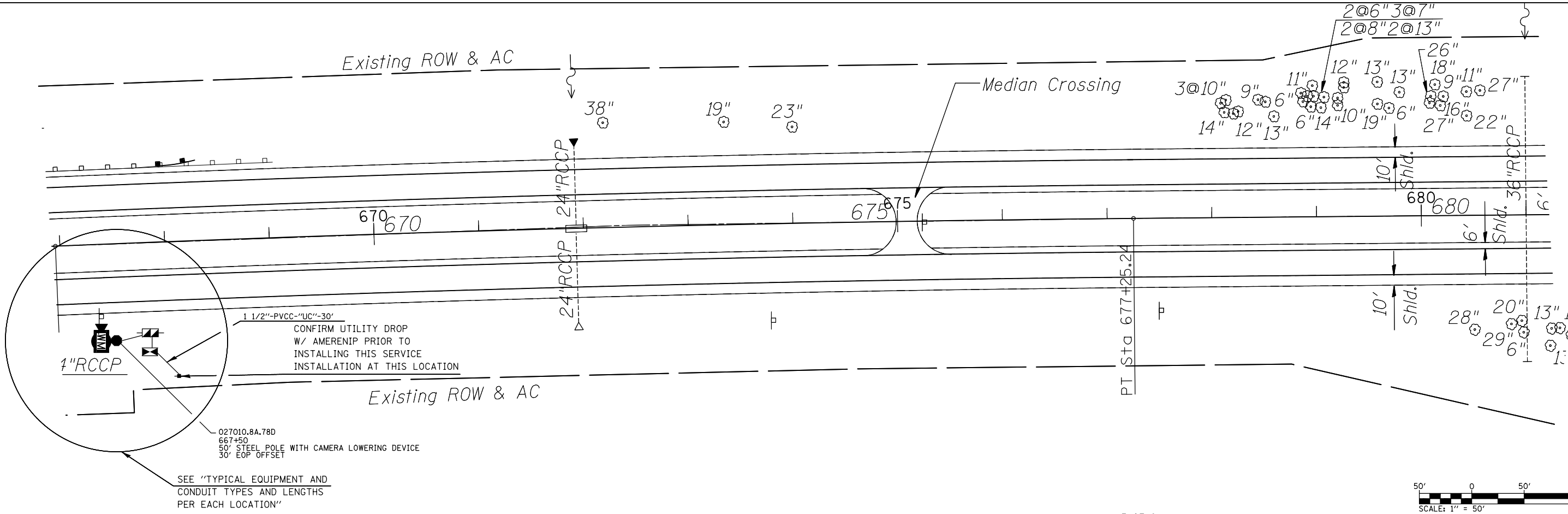
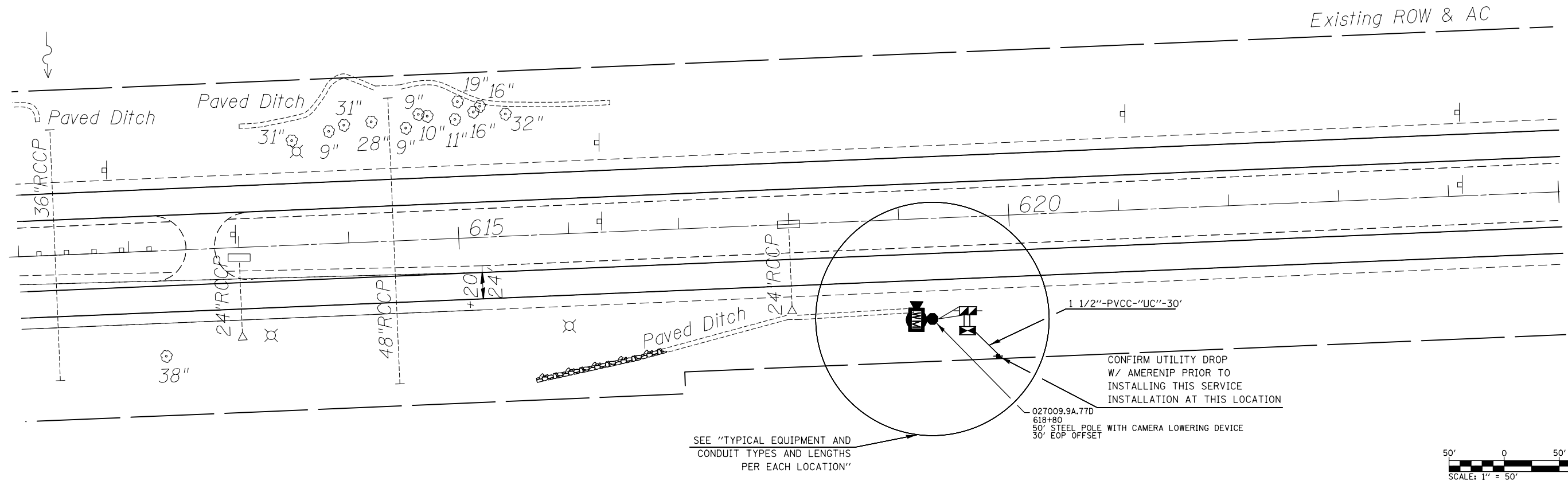
FILE NAME =	USER NAME = prestonm	DESIGNED -	REVISED -
e:\pwork\work\pwork\prestonm\d0279896\d0276f22-sht-ITS.dgn		DRAWN -	REVISED -
	PLOT SCALE = 100.0000' / in.	CHECKED -	REVISED -
	PLOT DATE = 2/2/2012	DATE -	REVISED -

**STATE OF ILLINOIS
DEPARTMENT OF TRANSPORTATION**

**ITS PLAN
LOCATION #1-STA. 571 + 45**

SCALE: SHEET NO. OF SHEETS STA. TO STA.

F.A.I. RTE.	SECTION	COUNTY	TOTAL SHEETS	SHEET NO.
270/70	DIST 8 ITS 2012-1	MADISON	23	11
CONTRACT NO. 76F22				
FED. ROAD DIST. NO. ILLINOIS FED. AID PROJECT				



3 OF 9

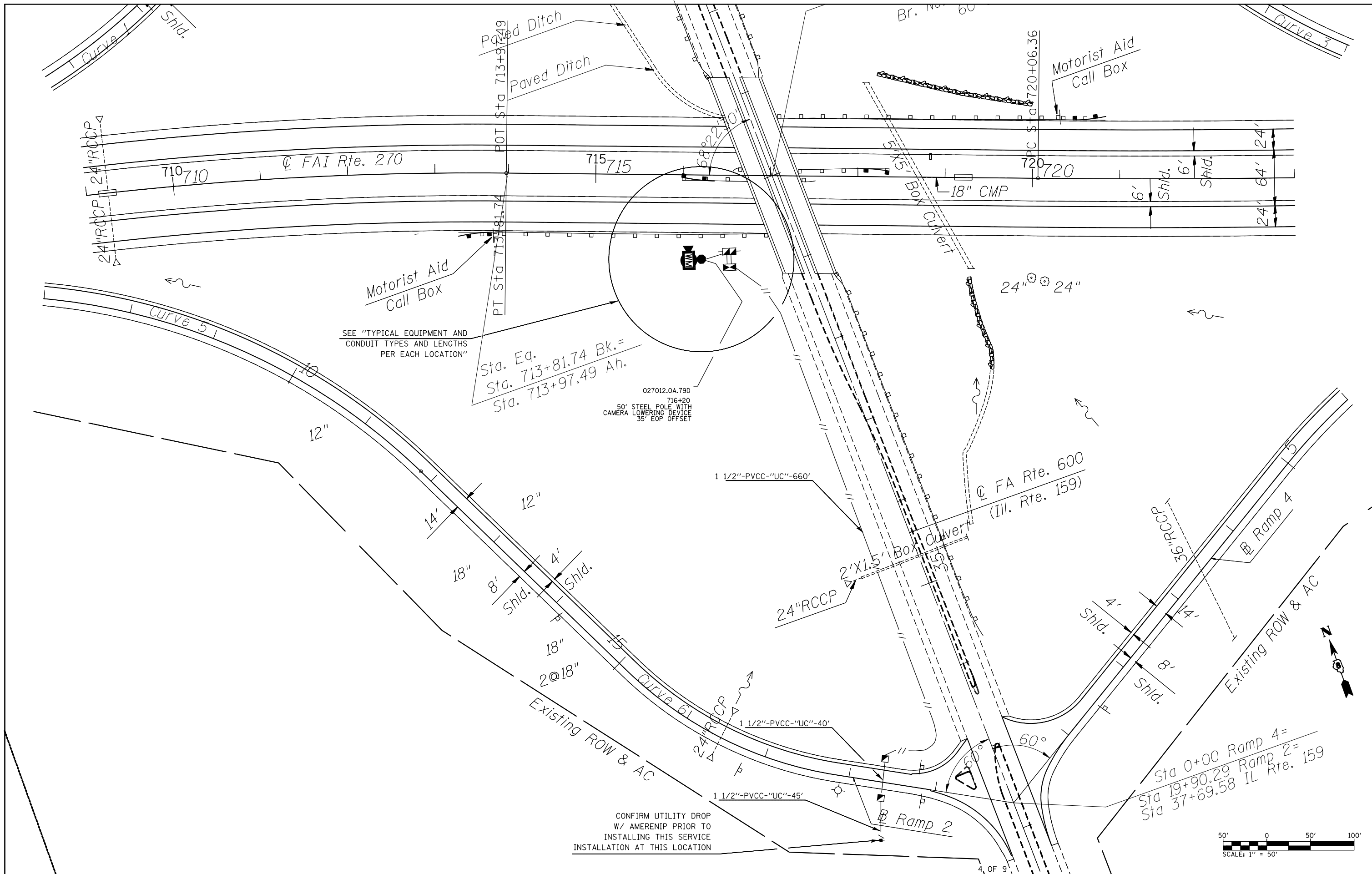
FILE NAME =	USER NAME = prestonme	DESIGNED -	REVISED -
et:\pwork\pwork\prestonme\d0279896\d076f22-sht-ITS.dgn		DRAWN -	REVISED -
	PLOT SCALE = 100.0000' / 1in.	CHECKED -	REVISED -
	PLOT DATE = 2/2/2012	DATE -	REVISED -

**STATE OF ILLINOIS
DEPARTMENT OF TRANSPORTATION**

ITS PLAN
LOCATION#2-STA. 618 + 80 & LOCATION#3-STA. 667 + 50

F.A.I. RTE.	SECTION	COUNTY	TOTAL SHEETS	SHEET NO.
270/70	DIST 8 ITS 2012-1	MADISON	23	12
CONTRACT NO. 76F22				
FED. ROAD DIST. NO.	ILLINOIS	FED. AID PROJECT		

SCALE: SHEET NO. OF SHEETS STA. TO STA.

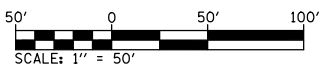


SEE "TYPICAL EQUIPMENT AND CONDUIT TYPES AND LENGTHS PER EACH LOCATION"

Sta. Eq.
Sta. 713+81.74 Bk.=
Sta. 713+97.49 Ah.

027012.0A.79D
716+20
50' STEEL POLE WITH
CAMERA LOWERING DEVICE
35' EOP OFFSET

CONFIRM UTILITY DROP
W/ AMERENIP PRIOR TO
INSTALLING THIS SERVICE
INSTALLATION AT THIS LOCATION

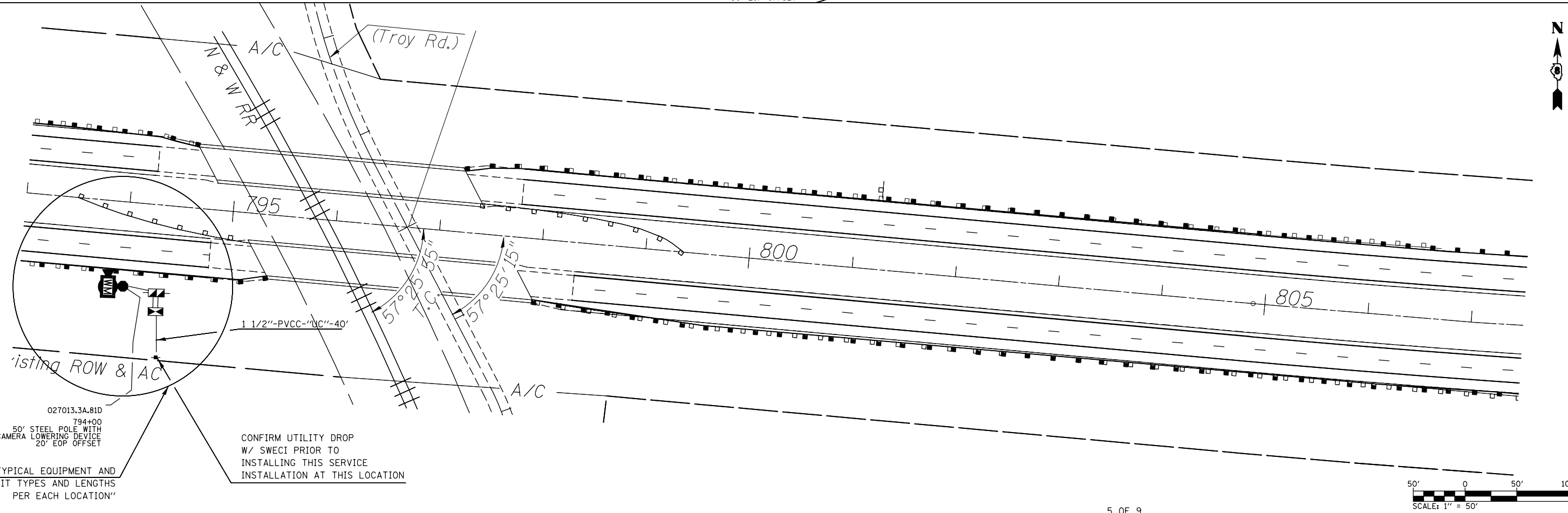
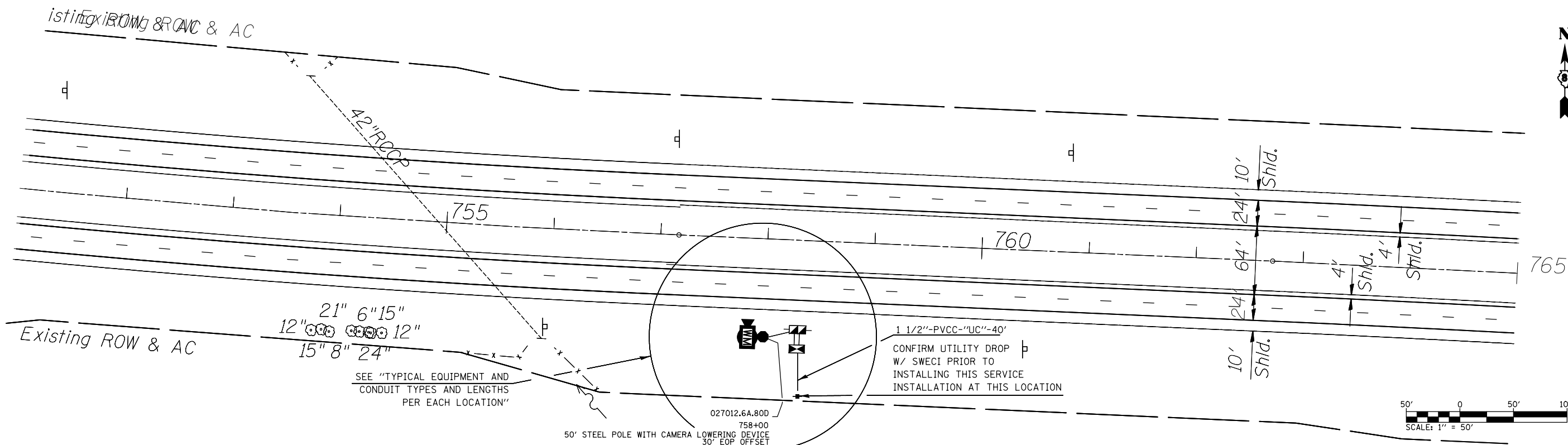


FILE NAME =	USER NAME = prestonme	DESIGNED -	REVISED -
et:\pwork\pwork\prestonme\d0279896\d076f22-sht-ITS.dgn		DRAWN -	REVISED -
	PLOT SCALE = 100.0000' / 1in.	CHECKED -	REVISED -
	PLOT DATE = 2/2/2012	DATE -	REVISED -

**STATE OF ILLINOIS
DEPARTMENT OF TRANSPORTATION**

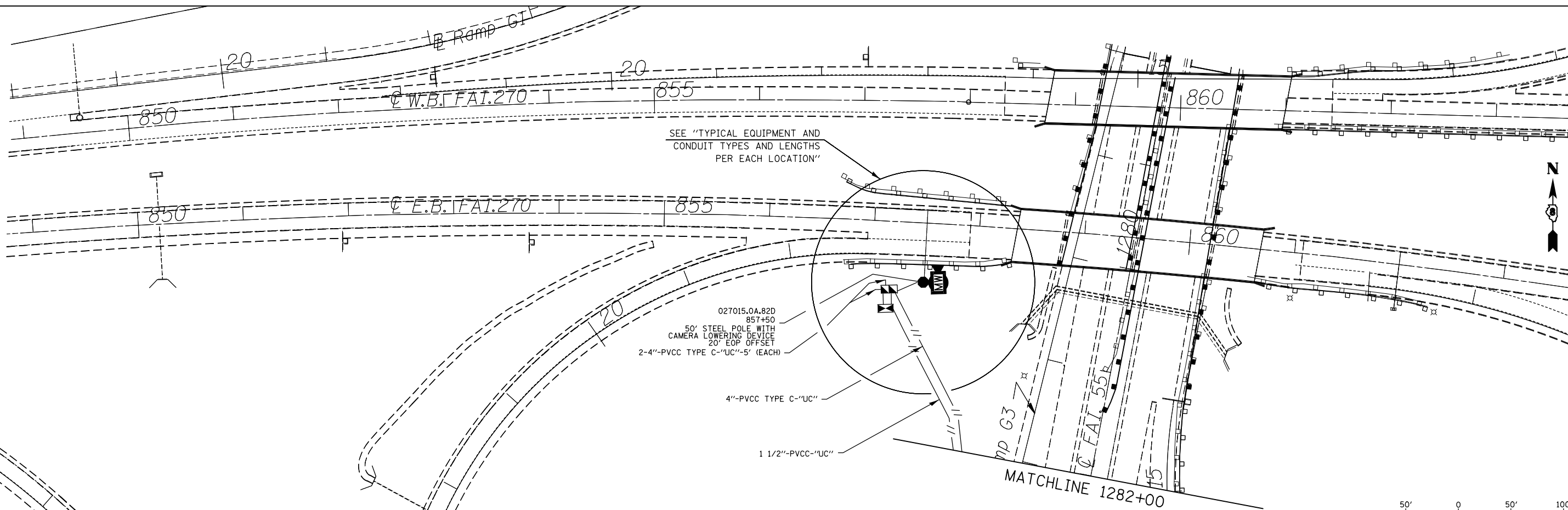
ITS PLAN LOCATION#4-STA. 716 + 20			
SCALE:	SHEET NO.	OF SHEETS	STA. TO STA.

F.A.I. RTE.	SECTION	COUNTY	TOTAL SHEETS	SHEET NO.
270/70	DIST 8 ITS 2012-1	MADISON	23	13
FED. ROAD DIST. NO. ILLINOIS FED. AID PROJECT			CONTRACT NO. 76F22	



5 OF 9

FILE NAME =	USER NAME = prestonme	DESIGNED -	REVISED -	STATE OF ILLINOIS DEPARTMENT OF TRANSPORTATION	ITS PLAN LOCATION#5-STA. 758+00 & LOCATION#6-STA. 794+00			F.A.I. RTE.	SECTION	COUNTY	TOTAL SHEETS	SHEET NO.	
et:\pwork\pwork\prestonme\d0279896\d0279896-176f22-sht-ITS.dgn		DRAWN -	REVISED -		SCALE:	SHEET NO.	OF SHEETS	STA.	TO STA.	270/70	DIST 8 ITS 2012-1	MADISON	23 14
		CHECKED -	REVISED -										CONTRACT NO. 76F22
		DATE -	REVISED -							FED. ROAD DIST. NO.	ILLINOIS	FED. AID PROJECT	



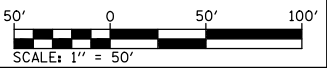
SEE "TYPICAL EQUIPMENT AND
CONDUIT TYPES AND LENGTHS
PER EACH LOCATION"

027015.0A.82D
857+50
50' STEEL POLE WITH
CAMERA LOWERING DEVICE
20' EOP OFFSET
2-4"-PVCC TYPE C-"UC"-5' (EACH)

4"-PVCC TYPE C-"UC"

1 1/2"-PVCC-"UC"

MATCHLINE 1282+00



6 OF 9

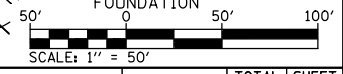
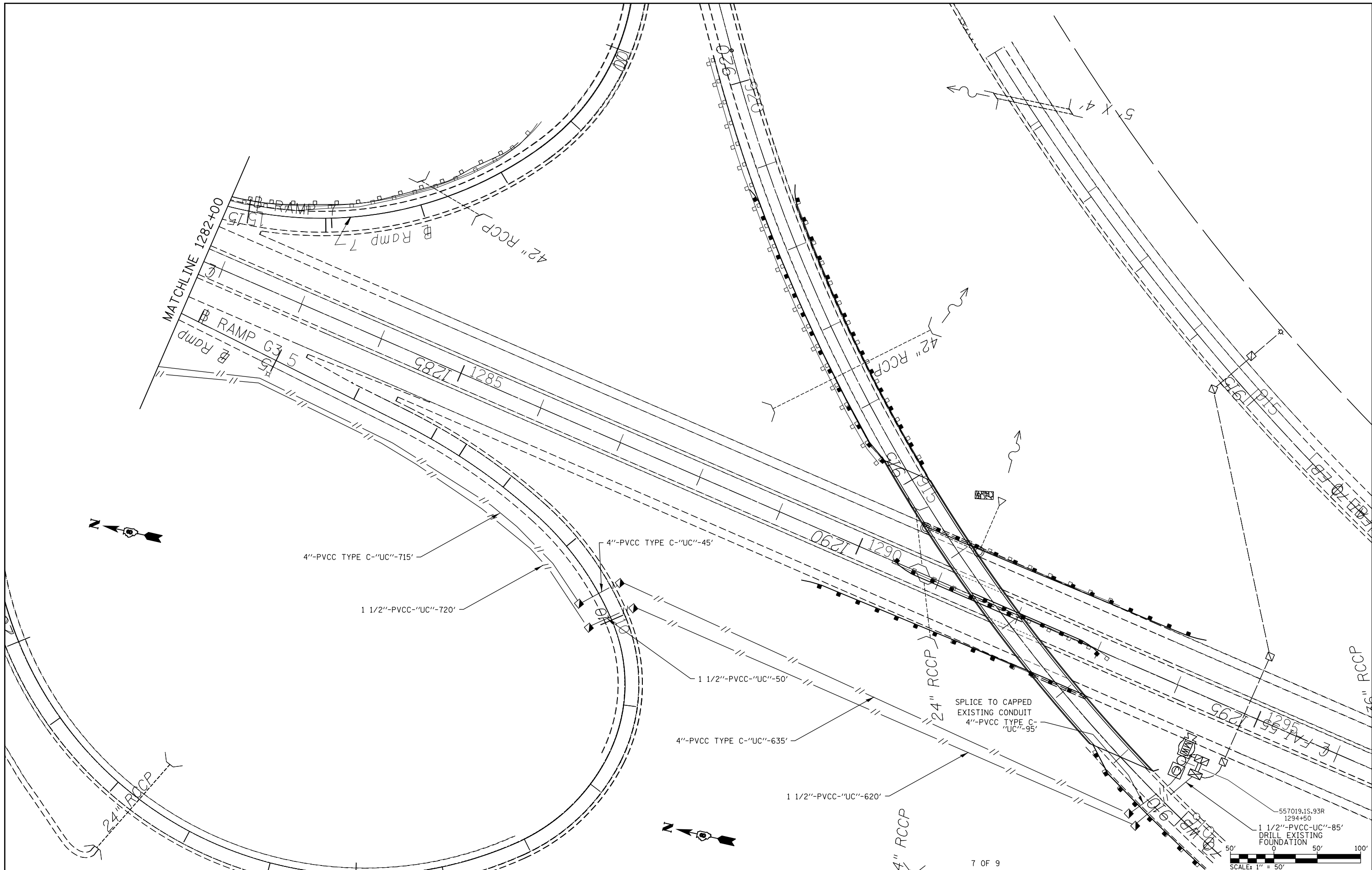
FILE NAME =	USER NAME = prestonme	DESIGNED -	REVISED -
et:\pwork\pwork\prestonme\d0279896\d076f22-sht-ITS.dgn		DRAWN -	REVISED -
	PLOT SCALE = 100.0000' / in.	CHECKED -	REVISED -
	PLOT DATE = 2/2/2012	DATE -	REVISED -

**STATE OF ILLINOIS
DEPARTMENT OF TRANSPORTATION**

**ITS PLAN
LOCATION #7-STA. 857+50
1 OF 2**

SCALE:	SHEET NO.	OF	SHEETS	STA.	TO STA.
--------	-----------	----	--------	------	---------

F.A.I. RTE.	SECTION	COUNTY	TOTAL SHEETS	SHEET NO.
270/70	DIST 8 ITS 2012-1	MADISON	23	15
CONTRACT NO. 76F22				
FED. ROAD DIST. NO. ILLINOIS FED. AID PROJECT				



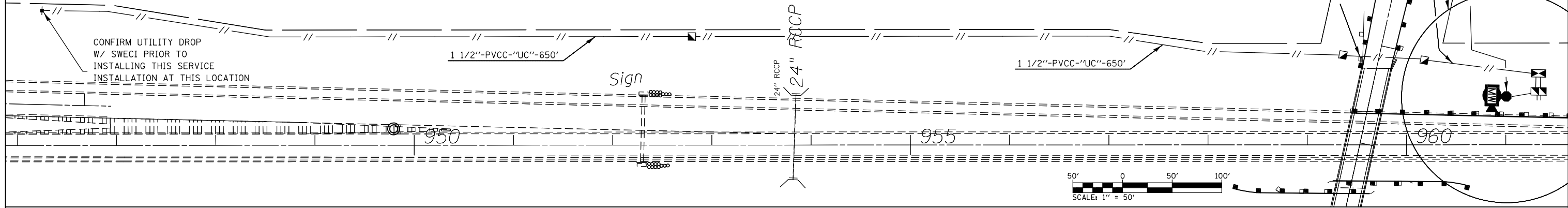
7 OF 9

FILE NAME =	USER NAME = prestonme	DESIGNED -	REVISED -
et:\pwork\pwork\prestonme\d0279896\d076f22-sht-ITS.dgn		DRAWN -	REVISED -
	PLOT SCALE = 100.0000' / 1in.	CHECKED -	REVISED -
	PLOT DATE = 2/2/2012	DATE -	REVISED -

**STATE OF ILLINOIS
DEPARTMENT OF TRANSPORTATION**

ITS PLAN			
LOCATION#7-STA. 857 + 50			
2 OF 2			
SCALE:	SHEET NO.	OF SHEETS	STA. TO STA.

F.A.I. RTE.	SECTION	COUNTY	TOTAL SHEETS	SHEET NO.
270/70	DIST 8 ITS 2012-1	MADISON	23	16
CONTRACT NO. 76F22				
FED. ROAD DIST. NO.	ILLINOIS FED. AID PROJECT			



SEE "TYPICAL EQUIPMENT AND CONDUIT TYPES AND LENGTHS PER EACH LOCATION"

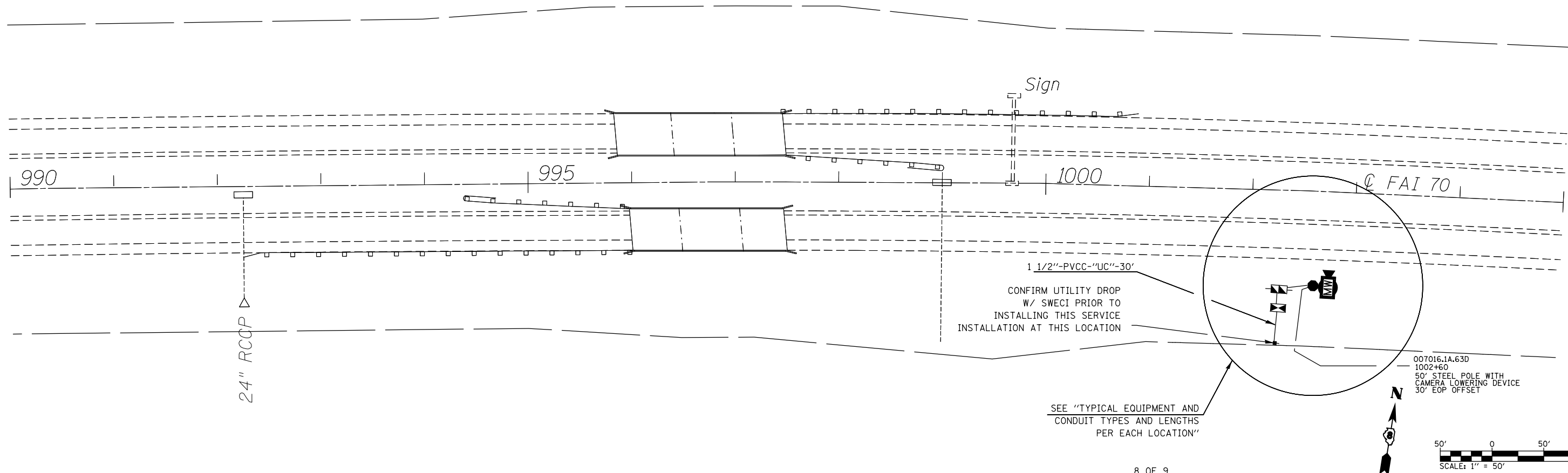
1 1/2"-PVCC-"UC"-105'

1 1/2"-PVCC-"UC"-75'

007015.4A.83D
961+00
50' STEEL POLE WITH CAMERA LOWERING DEVICE
25' EOP OFFSET

CONFIRM UTILITY DROP W/ SWECI PRIOR TO INSTALLING THIS SERVICE INSTALLATION AT THIS LOCATION

50' 0 50' 100'
SCALE: 1" = 50'



CONFIRM UTILITY DROP W/ SWECI PRIOR TO INSTALLING THIS SERVICE INSTALLATION AT THIS LOCATION

SEE "TYPICAL EQUIPMENT AND CONDUIT TYPES AND LENGTHS PER EACH LOCATION"

50' 0 50' 100'
SCALE: 1" = 50'

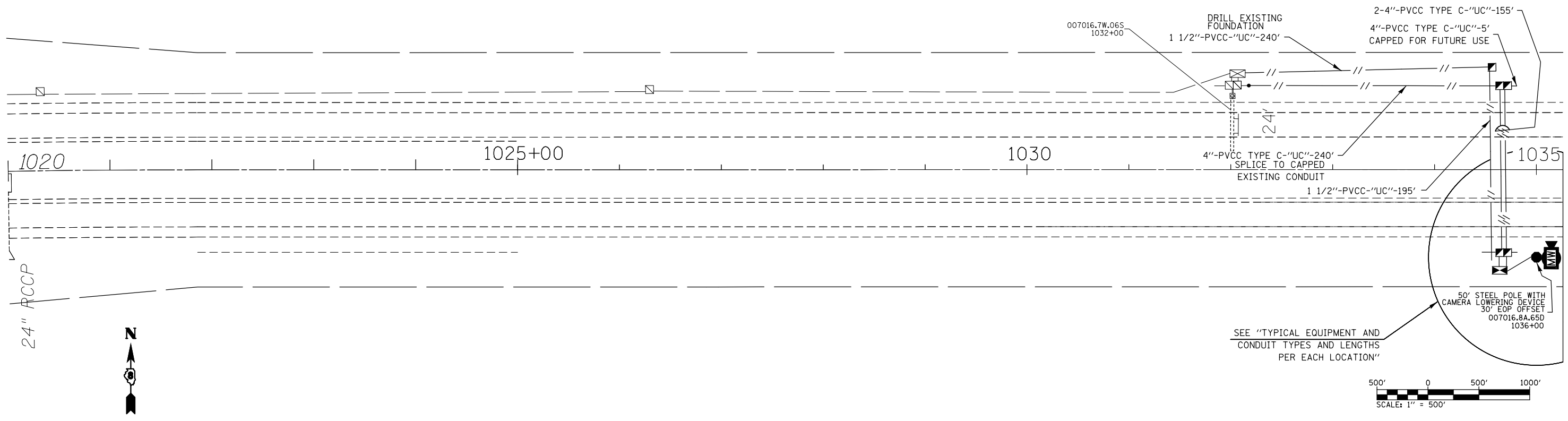
FILE NAME =	USER NAME = prestonme	DESIGNED -	REVISED -
et:\pw\work\p\dot\prestonme\d0279896\d076f22-sht-ITS.dgn		DRAWN -	REVISED -
	PLOT SCALE = 100.0000' / in.	CHECKED -	REVISED -
	PLOT DATE = 2/2/2012	DATE -	REVISED -

**STATE OF ILLINOIS
DEPARTMENT OF TRANSPORTATION**

**ITS PLAN
LOCATION#8-STA. 961+00 & LOCATION#9-STA. 1002+60**

SCALE: SHEET NO. OF SHEETS STA. TO STA.

F.A.I. RTE.	SECTION	COUNTY	TOTAL SHEETS	SHEET NO.
270/70	DIST 8 ITS 2012-1	MADISON	23	17
CONTRACT NO. 76F22				
FED. ROAD DIST. NO. ILLINOIS FED. AID PROJECT				

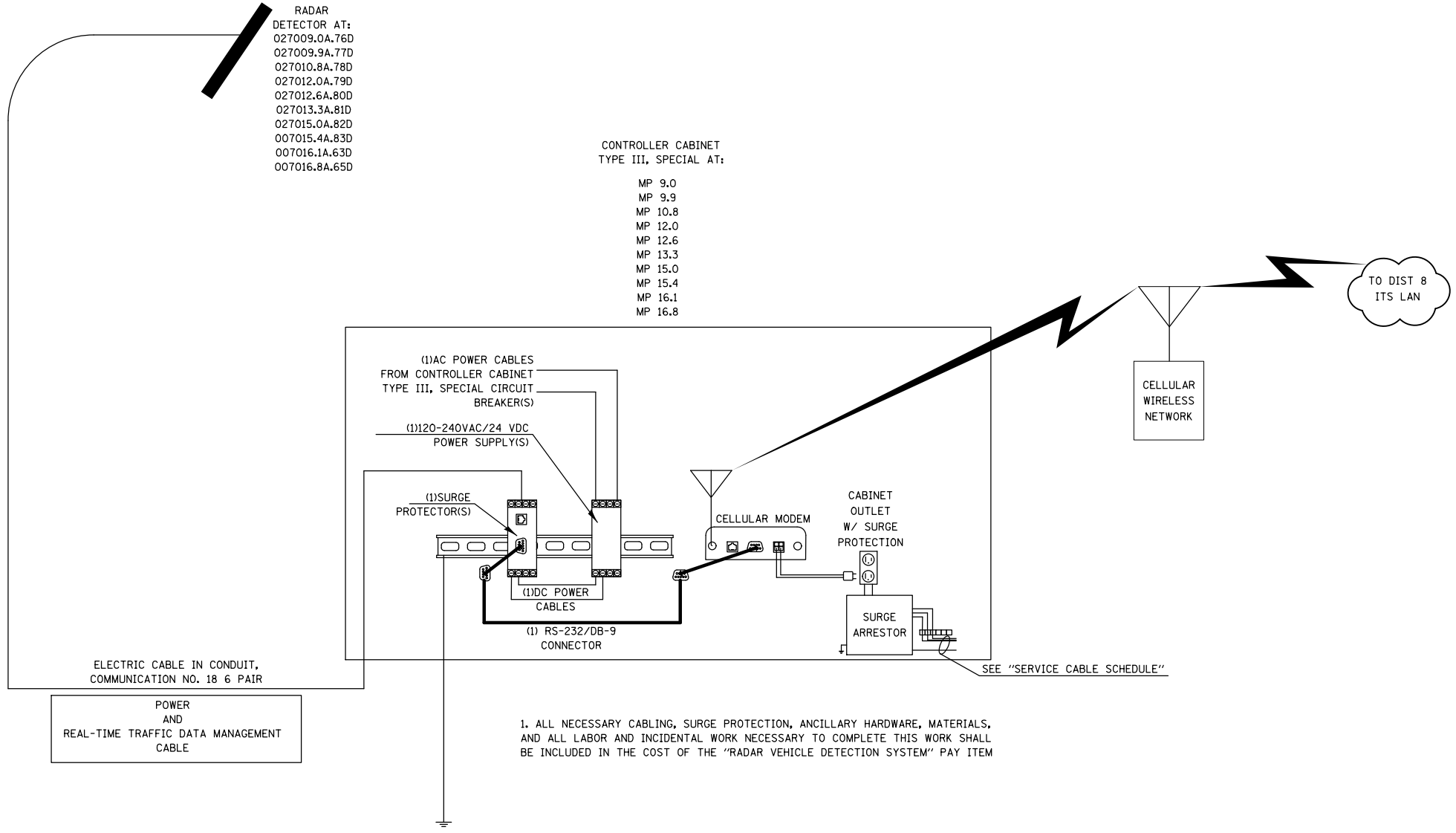


FILE NAME =	USER NAME = prestonme	DESIGNED -	REVISED -	STATE OF ILLINOIS DEPARTMENT OF TRANSPORTATION	ITS PLAN LOCATION#10-STA. 1036 + 00			F.A.I. RTE.	SECTION	COUNTY	TOTAL SHEETS	SHEET NO.
et:\pw\work\p\dot\prestonme\d0279896\d076f22-sht-ITS.dgn	PLOT SCALE = 100.0000' / 1in.	DRAWN -	REVISED -					270/70	DIST 8 ITS 2012-1	MADISON	23	18
	PLOT DATE = 2/2/2012	CHECKED -	REVISED -		CONTRACT NO. 76F22							
		DATE -	REVISED -		SCALE:	SHEET NO.	OF	SHEETS	STA.	TO	STA.	FED. ROAD DIST. NO. ILLINOIS FED. AID PROJECT

RADAR
 DETECTOR AT:
 027009.0A.76D
 027009.9A.77D
 027010.8A.78D
 027012.0A.79D
 027012.6A.80D
 027013.3A.81D
 027015.0A.82D
 007015.4A.83D
 007016.1A.63D
 007016.8A.65D

CONTROLLER CABINET
 TYPE III, SPECIAL AT:

MP 9.0
 MP 9.9
 MP 10.8
 MP 12.0
 MP 12.6
 MP 13.3
 MP 15.0
 MP 15.4
 MP 16.1
 MP 16.8




1. ALL NECESSARY CABLING, SURGE PROTECTION, ANCILLARY HARDWARE, MATERIALS, AND ALL LABOR AND INCIDENTAL WORK NECESSARY TO COMPLETE THIS WORK SHALL BE INCLUDED IN THE COST OF THE "RADAR VEHICLE DETECTION SYSTEM" PAY ITEM

FILE NAME =	USER NAME = prestonme	DESIGNED -	REVISED -
et:\pwork\pwork\prestonme\d0279896\d0279896\76f22-sht-ITS.dgn		DRAWN -	REVISED -
	PLOT SCALE = 100.0000' / 1in.	CHECKED -	REVISED -
	PLOT DATE = 2/2/2012	DATE -	REVISED -

STATE OF ILLINOIS
 DEPARTMENT OF TRANSPORTATION

COMMUNICATION SHEET TYPICAL FOR ALL CONTROLLER CABINETS			
SCALE:	SHEET NO.	OF SHEETS	STA. TO STA.

F.A.I. RTE.	SECTION	COUNTY	TOTAL SHEETS	SHEET NO.
270/70	DIST 8 ITS 2012-1	MADISON	23	19
CONTRACT NO. 76F22				
FED. ROAD DIST. NO. ILLINOIS FED. AID PROJECT				


Illinois Department of Transportation
 Division of Highways
 Illinois Department of Transportation

SOIL BORING LOG


Page 1 of 1

ROUTE FAI 270 /FAI 70 DESCRIPTION ITS Device on I-270 EB at IL 157 LOGGED BY JAS/AD (TS)
 SECTION Dist 8 ITS 2012-1 LOCATION NE 14, SEC. 32, TWP. 4N, RNG. 8W, 3 PM
 COUNTY Madison DRILLING METHOD Hand Auger HAMMER TYPE

STRUCT. NO. _____ Station _____
 BORING NO. #1 027009.0A
 Station 571+60
 Offset 96,00ft RT
 Ground Surface Elev. 456.0 ft (ft) (6") (tsf) (%)

Soil Description	Elev. (ft)	UCS		SPT	
		B	S	N	Q
Dark Brown (Loose, Moist) SAND (Fill)					
	454.0			NC	19
				NC	17
Dark Brownish Gray (Medium Stiff, Moist) Silty Clay LOAM (Loess) A-6(10) See Class @ 2 ft Brown				1.25	17
					17
					17
					18
					21
				0.50	23
				0.75	23
Brown and Gray				0.75	23
	444.0				22
Brown and Gray (Soft, Moist) Silt LOAM (Alluvial) A-4(4) See Class @ 13 ft				0.25	23
				0.25	22
	441.0				15
END OF HAND AUGER					
Pocket Penetrometer used for Qu					
					20

The Unconfined Compressive Strength (UCS) Failure Mode is indicated by (B-Bulge, S-Shear, P-Penetrometer)
 The SPT (N value) is the sum of the last two blow values in each sampling zone (AASHTO T206)
 BBS, from 137 (Rev. 8-99)


Illinois Department of Transportation
 Division of Highways
 Illinois Department of Transportation

SOIL BORING LOG


Page 1 of 1

ROUTE FAI 270 /FAI 70 DESCRIPTION ITS Device on I-270 EB between IL 157 and North Main Street LOGGED BY JAS (TS)
 SECTION Dist 8 ITS 2012-1 LOCATION NE 14, SEC. 33, TWP. 4N, RNG. 8W, 3 PM
 COUNTY Madison DRILLING METHOD Hollow Stem Auger HAMMER TYPE

STRUCT. NO. _____ Station _____
 BORING NO. #2 027009.9A
 Station 618+80
 Offset 90,00ft RT
 Ground Surface Elev. 533.0 ft (ft) (6") (tsf) (%)

Soil Description	Elev. (ft)	UCS		SPT	
		B	S	N	Q
Grayish Brown (Medium Stiff, Moist) Silty CLAY (Loess)					
					2
				0.35	23
					4
	530.0				
Brown and Gray (Stiff, Moist) Silty CLAY with Trace Organic (Loess)				4.50	19
					9
	527.5				
Brown and Gray (Medium Stiff, Moist) Silt LOAM (Alluvial) A-4(4) See Class @ 7 ft				1.00	24
					3
Trace Shells, Stiff					2
				0.31	25
					4
					5
	522.0				
Gray and Brown (Medium Stiff, Moist) SILT (Alluvial)				0.23	27
					4
				1.00	26
					3
	517.5				
Gray (Medium Stiff, Moist) Silty CLAY (Alluvial)				0.42	29
					1
					2
	515.5				
END OF BORING					
					20

The Unconfined Compressive Strength (UCS) Failure Mode is indicated by (B-Bulge, S-Shear, P-Penetrometer)
 The SPT (N value) is the sum of the last two blow values in each sampling zone (AASHTO T206)
 BBS, from 137 (Rev. 8-99)


Illinois Department of Transportation
 Division of Highways
 Illinois Department of Transportation

SOIL BORING LOG

Page 1 of 1

ROUTE FAI 270 /FAI 70 DESCRIPTION ITS Device on I-270 EB at North Main Street/ Glen Carbon Road LOGGED BY JAS (TS)
 SECTION Dist 8 ITS 2012-1 LOCATION NW 14, SEC. 34, TWP. 4N, RNG. 8W, 3 PM
 COUNTY Madison DRILLING METHOD Hollow Stem Auger HAMMER TYPE

STRUCT. NO. _____ Station _____
 BORING NO. #3 027010.8A
 Station 667+50
 Offset 90,00ft RT
 Ground Surface Elev. 530.0 ft (ft) (6") (tsf) (%)

Soil Description	Elev. (ft)	UCS		SPT	
		B	S	N	Q
Brownish Gray (Medium Stiff, Moist) Silty CLAY (Loess)					
					2
				0.58	24
					3
					4
Soft					1
				0.25	29
					1
					2
					5
Grayish Brown					1
				0.25	28
					1
					2
					1
				0.04	26
					1
					4
					10
Soft					1
				0.50	25
					3
	517.0				
Gray (Medium Stiff, Moist) Silty Clay LOAM (Alluvial) A-4(7) See Class @ 15 ft				0.23	25
					1
					3
					1
				0.35	22
					1
	512.5				
END OF BORING					
					20

The Unconfined Compressive Strength (UCS) Failure Mode is indicated by (B-Bulge, S-Shear, P-Penetrometer)
 The SPT (N value) is the sum of the last two blow values in each sampling zone (AASHTO T206)
 BBS, from 137 (Rev. 8-99)

Illinois Department of Transportation
Division of Highways
Roads Department of Transportation

SOIL BORING LOG

Page 1 of 1
Date 11/10/11

ROUTE FAI 270 /FAI 70 DESCRIPTION ITS Device on I-270 EB at IL 159 LOGGED BY JAS (TSB)

SECTION Dist 8 ITS 2012-1 LOCATION NW 14, SEC. 35, TWP. 4N, RNG. 8W, 3 PM

COUNTY Madison DRILLING METHOD Hollow Stem Auger HAMMER TYPE _____

STRUCT. NO. _____ Station _____

BORING NO. #4 027012.0A
Station 716+20
Offset 95,00ft RT
Ground Surface Elev. 524.0 ft

Description	D	B	U	M	Surface Water Elev.		Stream Bed Elev.
					(ft)	(ft)	
Grayish Brown (Medium Stiff, Moist) Silty Clay LOAM (Loess) A-6(9) See Class @ 1.5 ft	2	4	0.45	30			
	4	S					
	1						
	3	1.00	36				
	5	S					
More Clay	1						
	4	1.08	21				
	4	B					
	2						
Brown and Gray (Stiff, Moist) CLAY with Trace Sand and Gravel (Till)	4	2.08	22				
	5	S					
	2						
	4	1.62	20				
	4	S					
	3						
Brown and Gray (Stiff, Moist) Clay LOAM with Sand and Limestone Pieces (Till) A-4(3) See Class @ 14 ft	6	1.54	13				
	6	S					
Trace Coal	2						
	4	1.16	12				
	8	S					
END OF BORING							

The Unconfined Compressive Strength (UCS) Failure Mode is indicated by (B-Bulge, S-Shear, P-Penetrometer)
The SPT (N value) is the sum of the last two blow values in each sampling zone (AASHTO T206)
BBS, from 137 (Rev. 8-99)

Illinois Department of Transportation
Division of Highways
Roads Department of Transportation

SOIL BORING LOG

Page 1 of 1
Date 11/10/11

ROUTE FAI 270 /FAI 70 DESCRIPTION ITS Device on I-270 EB East of Oaklawn Road LOGGED BY JAS (TSB)

SECTION Dist 8 ITS 2012-1 LOCATION NE 14, SEC. 35, TWP. 4N, RNG. 8W, 3 PM

COUNTY Madison DRILLING METHOD Hollow Stem Auger HAMMER TYPE _____

STRUCT. NO. _____ Station _____

BORING NO. #5 087012.6A
Station 758+00
Offset 90,00ft RT
Ground Surface Elev. 577.9 ft

Description	D	B	U	M	Surface Water Elev.		Stream Bed Elev.
					(ft)	(ft)	
Gray (Medium Stiff, Moist) SILT (Loess)	1	3	1.20	25			
	3	S					
	1						
Gray (Stiff, Moist) Silt LOAM (Loess) A-6(10) See Class @ 5 ft	4	1.43	27				
	6	S					
Medium Stiff	3						
	4	1.50	26				
	4	S					
Brownish Gray	3						
	3	0.77	26				
	3	S					
More Clay, Stiff	4	2.62	25				
	5	S					
	3						
Brownish Gray (Medium Stiff, Moist) Silt LOAM with Limestone Pieces (Alluvial) A-6(12) See Class @ 15 ft	1	3	1.27	24			
	3	S					
	2						
Gray (Medium Stiff, Moist) CLAY (Alluvial)	3	0.54	29				
	3	B					
END OF BORING							

The Unconfined Compressive Strength (UCS) Failure Mode is indicated by (B-Bulge, S-Shear, P-Penetrometer)
The SPT (N value) is the sum of the last two blow values in each sampling zone (AASHTO T206)
BBS, from 137 (Rev. 8-99)

Illinois Department of Transportation
Division of Highways
Roads Department of Transportation

SOIL BORING LOG

Page 1 of 1
Date 11/11/11

ROUTE FAI 270 /FAI 70 DESCRIPTION ITS Device on I-270 EB at Old Troy Road LOGGED BY JASAD (TSB)

SECTION Dist 8 ITS 2012-1 LOCATION NE 14, SEC. 36, TWP. 4N, RNG. 8W, 3 PM

COUNTY Madison DRILLING METHOD Hand Auger HAMMER TYPE _____

STRUCT. NO. _____ Station _____

BORING NO. #6 027013.3A
Station 794+00
Offset 80,00ft RT
Ground Surface Elev. 601.8 ft

Description	D	B	U	M	Surface Water Elev.		Stream Bed Elev.
					(ft)	(ft)	
Brown (Medium Stiff, Moist) Silt LOAM with Trace Limestone Pieces (Fill) A-4(5) See Class @ 1 ft	0.25	18					
	1.00	13					
	0.50	19					
	-	17					
	-	17					
	1.00	17					
Wet	0.75	22					
	0.50	25					
	-	25					
No Recovery	-	26					
	591.8	-10					
END OF HAND AUGER							
Pocket Penetrometer used for Qu							
NOTE: Groundwater caused suction action below 7.0 feet.							

The Unconfined Compressive Strength (UCS) Failure Mode is indicated by (B-Bulge, S-Shear, P-Penetrometer)
The SPT (N value) is the sum of the last two blow values in each sampling zone (AASHTO T206)
BBS, from 137 (Rev. 8-99)

Illinois Department of Transportation <small>Division of Highways</small> <small>Illinois Department of Transportation</small>		SOIL BORING LOG		Page 1 of 1	
ROUTE <u>FAI 270 /FAI 70</u> DESCRIPTION <u>ITS Device on I-70 EB East of Staunton Road</u> LOGGED BY <u>JAS (TSB)</u>		DATE <u>11/9/11</u>			
SECTION <u>Dist 8 ITS 2012-1</u> LOCATION <u>NW 14, SEC. 34, TWP. 4N, RNG. 7W, 3 PM</u>					
COUNTY <u>Madison</u> DRILLING METHOD <u>HoLow Stem Auger</u> HAMMER TYPE _____					
STRUCT. NO. _____ Station _____ BORING NO. <u>#10_007021.4A</u> Station <u>1036+00</u> Offset <u>85,00ft RT</u> Ground Surface Elev. <u>513.6</u> ft	D E P T H (ft)	B L O W S (6")	U L O S C U R E (tsf)	M O I S T U R E (%)	Surface Water Elev. _____ ft Stream Bed Elev. _____ ft Groundwater Elev. _____ ft First Encounter _____ NA ft Upon Completion _____ ft After _____ Hrs. _____ ft
Light Brown (Medium Stiff, Moist) Silty CLAY (TII) Gray to Brown Gray (Medium Stiff, Moist) SILT (TII) Grayish Brown (Medium Stiff, Moist) Silty CLAY (TII) Brown (Medium Stiff, Moist) Clay LOAM with Limestone Pieces (TII) A-6(13) See Class @ 15 ft END OF BORING	2 2 5 2 3 4 -5 2 3 3 1 2 3 -10 1 2 3 -500,6 2 3 4 -15 2 2 4 496,1 -20	2,28 S 0,77 S 0,54 S 0,75 P 0,46 S 0,77 S 1,16 S -	25 26 24 25 25 22 23 -		
The Unconfined Compressive Strength (UCS) Failure Mode is indicated by (B-Bulge, S-Shear, P-Penetrometer) The SPT (N value) is the sum of the last two blow values in each sampling zone (AASHTO T206) BBS, from 137 (Rev. 8-99)					

FILE NAME =	USER NAME = <u>prestonme</u>	DESIGNED -	REVISED -	STATE OF ILLINOIS DEPARTMENT OF TRANSPORTATION	SOIL BORING LOGS	F.A.I. RTE.	SECTION	COUNTY	TOTAL SHEETS	SHEET NO.
et:\p\work\p\dot\prestonme\100279896\1087622-sht-ITS.dgn		DRAWN -	REVISED -			270/70	DIST 8 ITS 2012-1	MADISON	23	23
PLOT SCALE = <u>100.0000</u> ' / in.		CHECKED -	REVISED -			CONTRACT NO. 76F22				
PLOT DATE = <u>2/2/2012</u>		DATE -	REVISED -	SCALE:	SHEET NO. OF SHEETS STA. TO STA.	FED. ROAD DIST. NO. ILLINOIS FED. AID PROJECT				