

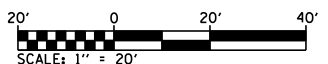
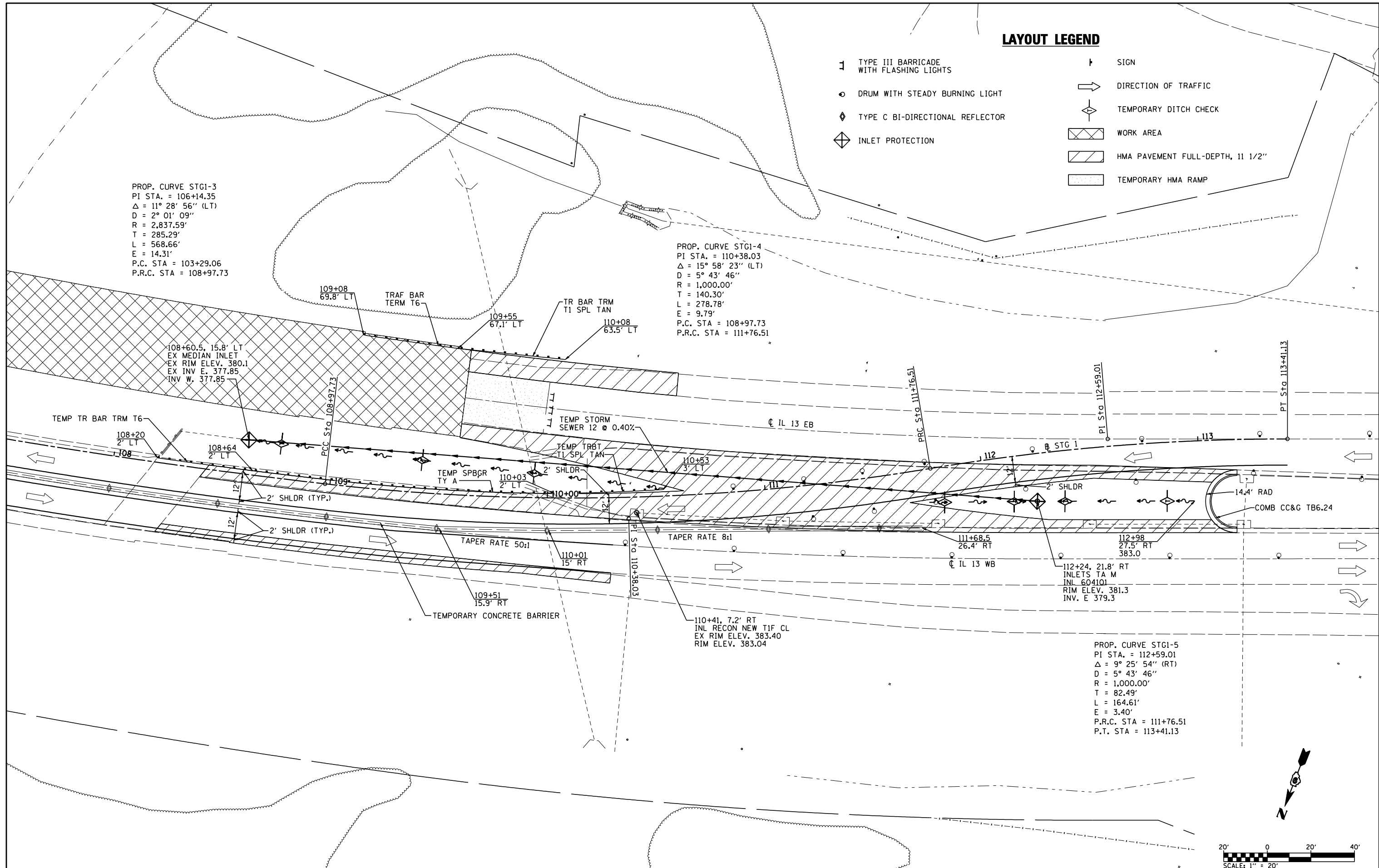
**LAYOUT LEGEND**

- ⊥ TYPE III BARRICADE WITH FLASHING LIGHTS
- ⊙ DRUM WITH STEADY BURNING LIGHT
- ◇ TYPE C BI-DIRECTIONAL REFLECTOR
- ⊠ INLET PROTECTION
- ↑ SIGN
- DIRECTION OF TRAFFIC
- ◇ TEMPORARY DITCH CHECK
- ▨ WORK AREA
- ▨ HMA PAVEMENT FULL-DEPTH, 11 1/2"
- ▨ TEMPORARY HMA RAMP

PROP. CURVE STG1-3  
 PI STA. = 106+14.35  
 $\Delta = 11^\circ 28' 56''$  (LT)  
 D = 2° 01' 09"  
 R = 2,837.59'  
 T = 285.29'  
 L = 568.66'  
 E = 14.31'  
 P.C. STA = 103+29.06  
 P.R.C. STA = 108+97.73

PROP. CURVE STG1-4  
 PI STA. = 110+38.03  
 $\Delta = 15^\circ 58' 23''$  (LT)  
 D = 5° 43' 46"  
 R = 1,000.00'  
 T = 140.30'  
 L = 278.78'  
 E = 9.79'  
 P.C. STA = 108+97.73  
 P.R.C. STA = 111+76.51

PROP. CURVE STG1-5  
 PI STA. = 112+59.01  
 $\Delta = 9^\circ 25' 54''$  (RT)  
 D = 5° 43' 46"  
 R = 1,000.00'  
 T = 82.49'  
 L = 164.61'  
 E = 3.40'  
 P.R.C. STA = 111+76.51  
 P.T. STA = 113+41.13



FILE NAME =	USER NAME = default	DESIGNED -	REVISED -
M:\28018\Microstation\0Phase1\0978056-sh1-staging.dgn		DRAWN -	REVISED -
PLOT SCALE = 40.0000' / IN.		CHECKED -	REVISED -
PLOT DATE = 1/25/2012		DATE -	REVISED -

**STATE OF ILLINOIS  
 DEPARTMENT OF TRANSPORTATION**

**STAGE 1 SHEETS  
 LAYOUT**

SCALE: 1"=20'    SHEET NO. 5 OF 9 SHEETS    STA.    TO STA.

F.A.P. RTE.	SECTION	COUNTY	TOTAL SHEETS	SHEET NO.
331	(12-11B-1)	JACKSON	200	29
CONTRACT NO. 78056				
ILLINOIS FED. AID PROJECT				