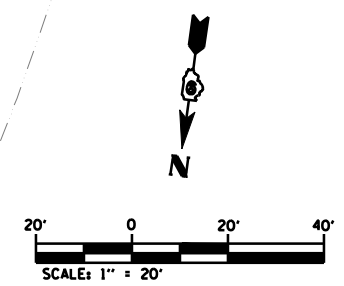
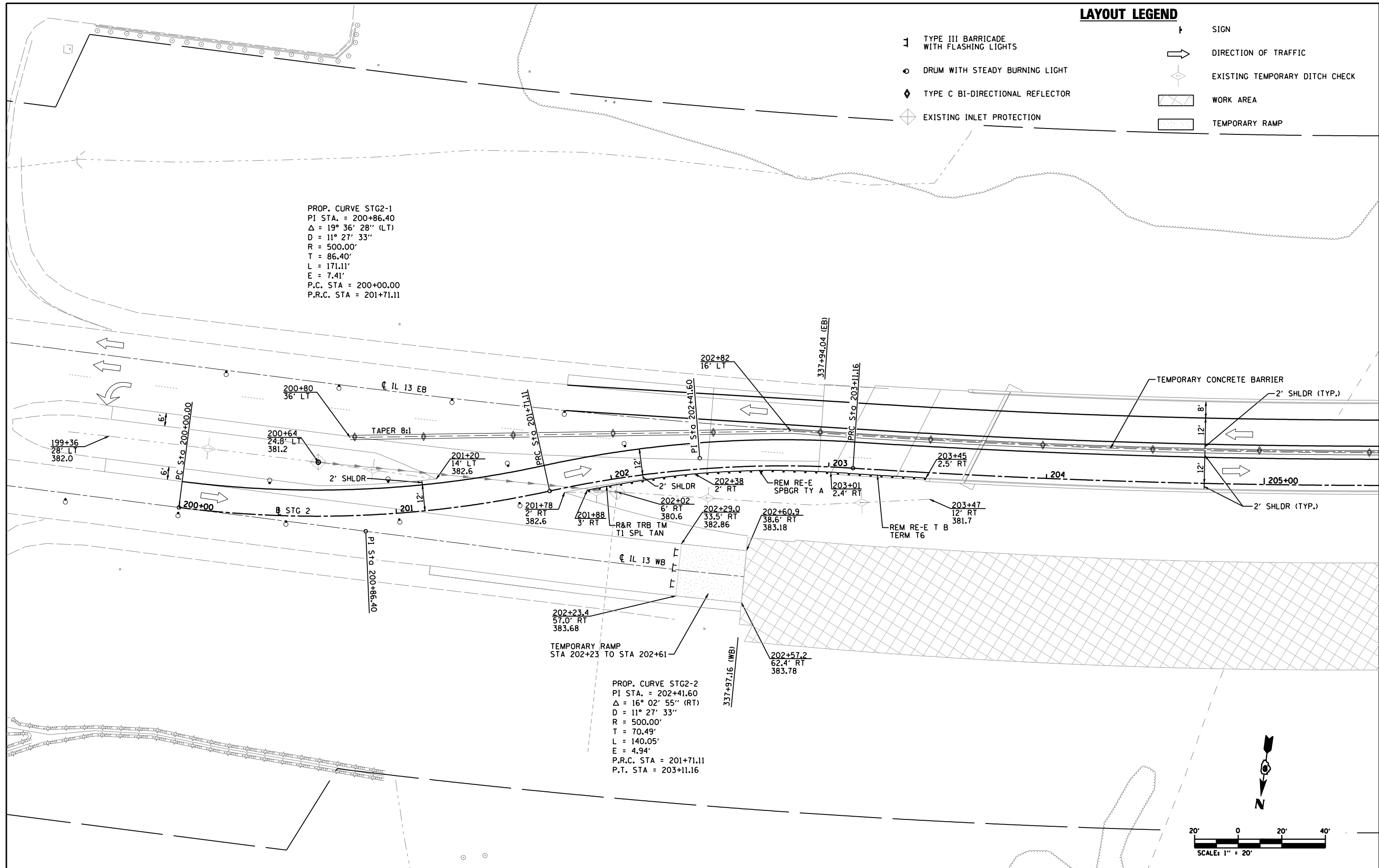


LAYOUT LEGEND

- 1 TYPE III BARRICADE WITH FLASHING LIGHTS
- o DRUM WITH STEADY BURNING LIGHT
- ◆ TYPE C BI-DIRECTIONAL REFLECTOR
- ◇ EXISTING INLET PROTECTION
- ↑ SIGN
- DIRECTION OF TRAFFIC
- ◇ EXISTING TEMPORARY DITCH CHECK
- ▨ WORK AREA
- ▭ TEMPORARY RAMP

PROP. CURVE STG2-1
 PI STA. = 200+86.40
 $\Delta = 19^\circ 36' 28''$ (LT)
 $D = 11^\circ 27' 33''$
 $R = 500.00'$
 $T = 86.40'$
 $L = 171.11'$
 $E = 7.41'$
 P.C. STA = 200+00.00
 P.R.C. STA = 201+71.11

PROP. CURVE STG2-2
 PI STA. = 202+41.60
 $\Delta = 16^\circ 02' 55''$ (RT)
 $D = 11^\circ 27' 33''$
 $R = 500.00'$
 $T = 70.49'$
 $L = 140.05'$
 $E = 4.94'$
 P.R.C. STA = 201+71.11
 P.T. STA = 203+11.16



FILE NAME =	USER NAME = default	DESIGNED -	REVISED -
M:\28018\Microstation\0Phase1\CADD Sheets\0978056-sht-staging2.dgn		DRAWN -	REVISED -
PLOT SCALE = 40.0000' / IN.		CHECKED -	REVISED -
PLOT DATE = 1/26/2012		DATE -	REVISED -

**STATE OF ILLINOIS
 DEPARTMENT OF TRANSPORTATION**

**STAGE 2 SHEETS
 LAYOUT**

SCALE: 1"=20' SHEET NO. 2 OF 8 SHEETS STA. TO STA.

F.A.P. RTE.	SECTION	COUNTY	TOTAL SHEETS	SHEET NO.
331	112-11B-1	JACKSON	200	35
CONTRACT NO. 78056				
ILLINOIS FED. AID PROJECT				