

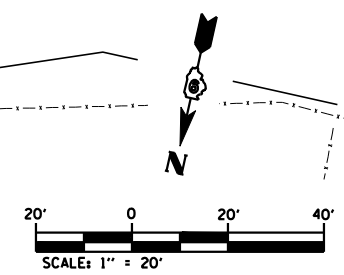
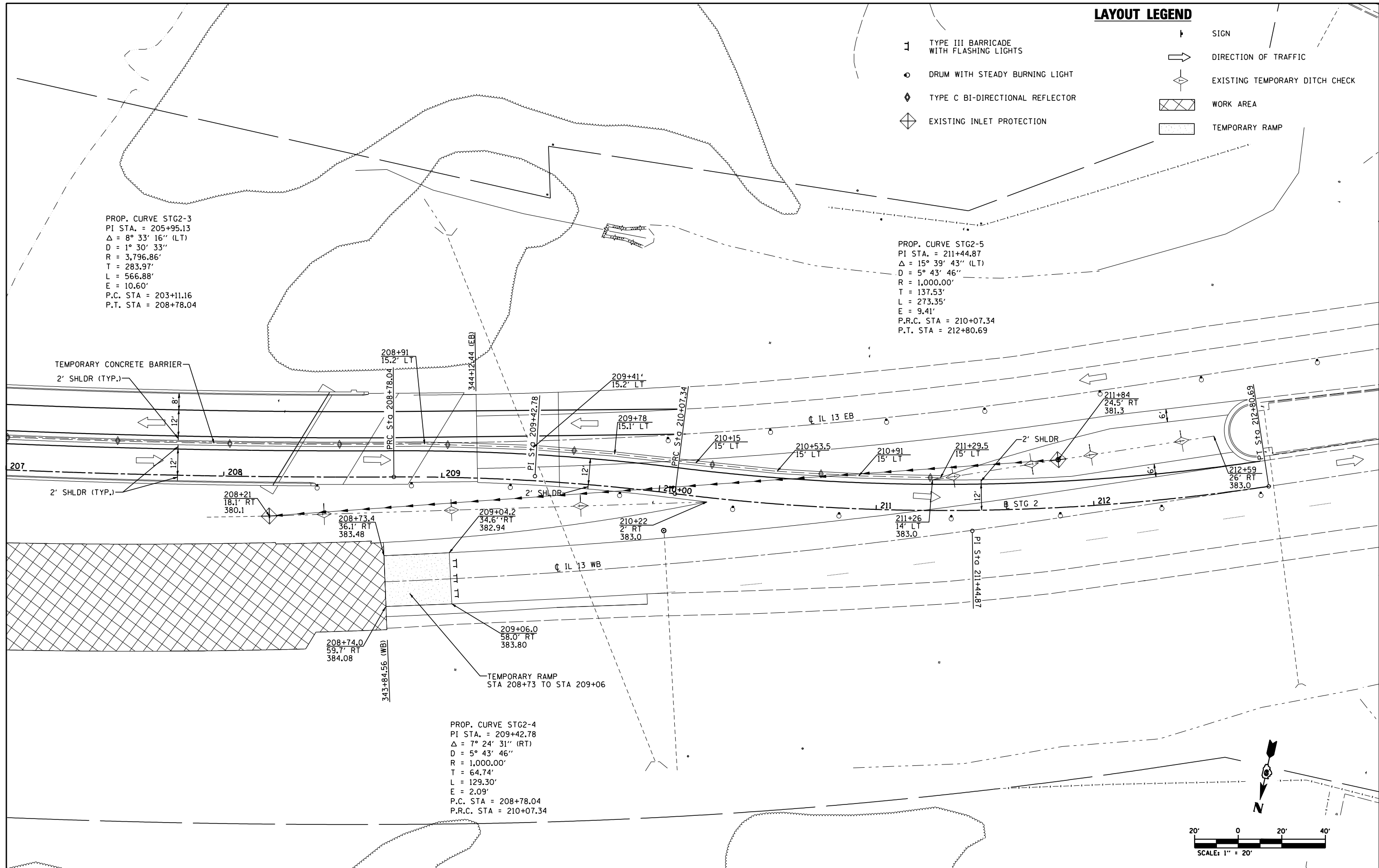
LAYOUT LEGEND

- TYPE III BARRICADE WITH FLASHING LIGHTS
- DRUM WITH STEADY BURNING LIGHT
- TYPE C BI-DIRECTIONAL REFLECTOR
- EXISTING INLET PROTECTION
- SIGN
- DIRECTION OF TRAFFIC
- EXISTING TEMPORARY DITCH CHECK
- WORK AREA
- TEMPORARY RAMP

PROP. CURVE STG2-3
 PI STA. = 205+95.13
 $\Delta = 8^\circ 33' 16''$ (LT)
 $D = 1^\circ 30' 33''$
 $R = 3,796.86'$
 $T = 283.97'$
 $L = 566.88'$
 $E = 10.60'$
 P.C. STA = 203+11.16
 P.T. STA = 208+78.04

PROP. CURVE STG2-5
 PI STA. = 211+44.87
 $\Delta = 15^\circ 39' 43''$ (LT)
 $D = 5^\circ 43' 46''$
 $R = 1,000.00'$
 $T = 137.53'$
 $L = 273.35'$
 $E = 9.41'$
 P.R.C. STA = 210+07.34
 P.T. STA = 212+80.69

PROP. CURVE STG2-4
 PI STA. = 209+42.78
 $\Delta = 7^\circ 24' 31''$ (RT)
 $D = 5^\circ 43' 46''$
 $R = 1,000.00'$
 $T = 64.74'$
 $L = 129.30'$
 $E = 2.09'$
 P.C. STA = 208+78.04
 P.R.C. STA = 210+07.34



| | | | | | | | | | | | | | | |
|-------------|---------------------|------------|-----------|---|----------------------------------|-------------|-------------|-------------|---------|--------|--------------|-----------|-----|----|
| FILE NAME = | USER NAME = default | DESIGNED - | REVISED - | STATE OF ILLINOIS DEPARTMENT OF TRANSPORTATION | STAGE 2 SHEETS LAYOUT | | | F.A.P. RTE. | SECTION | COUNTY | TOTAL SHEETS | SHEET NO. | | |
| | | DRAWN - | REVISED - | | SCALE: 1"=20' | SHEET NO. 3 | OF 8 SHEETS | STA. | TO STA. | 331 | (12-1)B-1 | JACKSON | 200 | 36 |
| | | CHECKED - | REVISED - | | CONTRACT NO. 78056 | | | | | | | | | |
| | | DATE - | REVISED - | | ILLINOIS FED. AID PROJECT | | | | | | | | | |