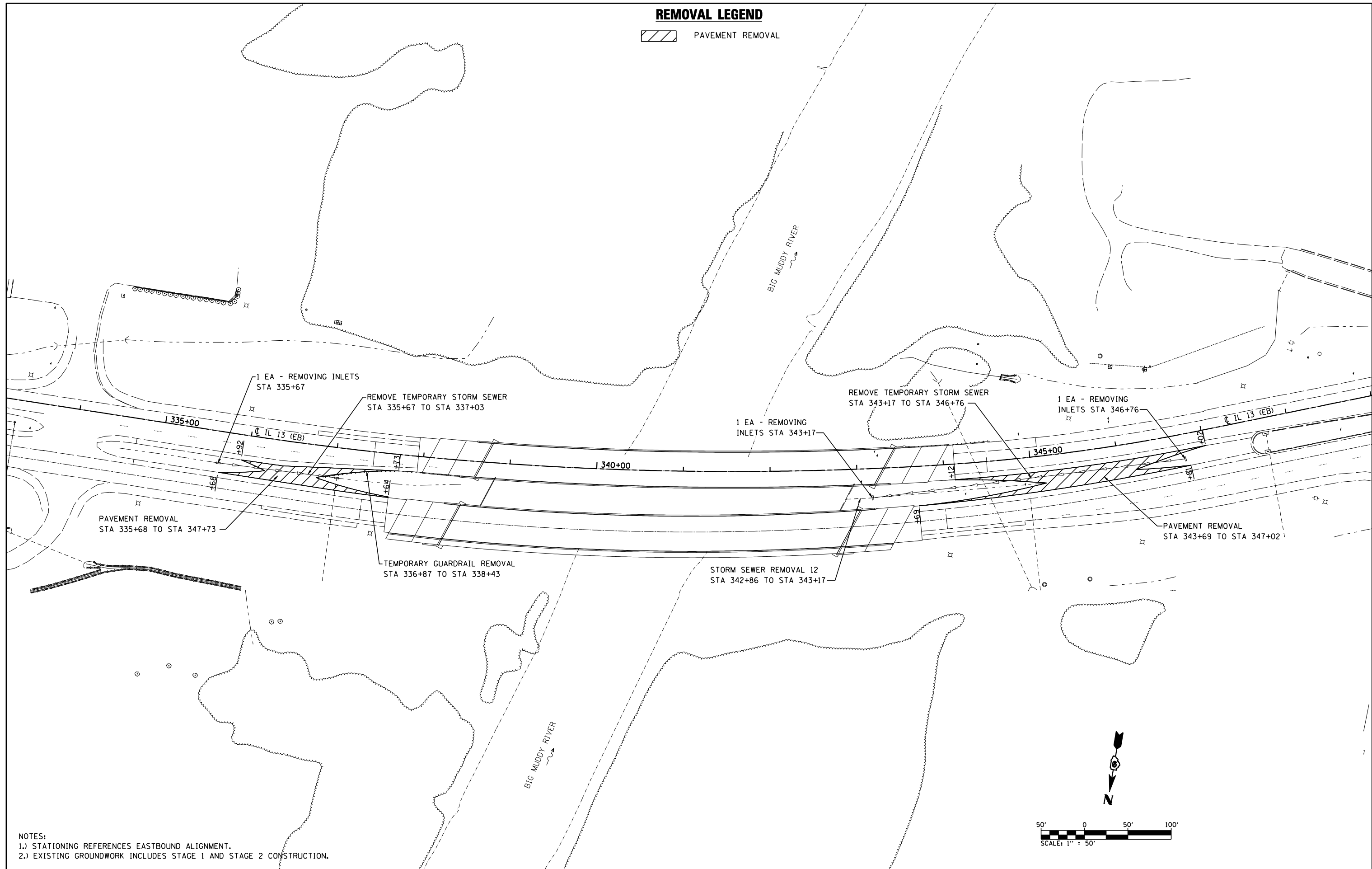
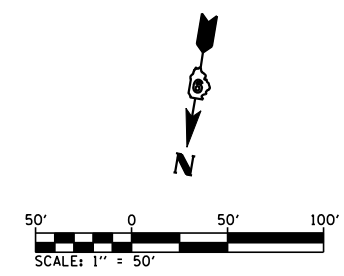


REMOVAL LEGEND

 PAVEMENT REMOVAL



NOTES:
 1.) STATIONING REFERENCES EASTBOUND ALIGNMENT.
 2.) EXISTING GROUNDWORK INCLUDES STAGE 1 AND STAGE 2 CONSTRUCTION.



FILE NAME =	USER NAME = default	DESIGNED -	REVISED -
ms:\28018\microstation\0phase1\0978056-sh\rem.dgn		DRAWN -	REVISED -
		CHECKED -	REVISED -
		DATE -	REVISED -

**STATE OF ILLINOIS
 DEPARTMENT OF TRANSPORTATION**

**STAGE 2 SHEETS
 FINAL REMOVAL**

SCALE: 1"=50' SHEET NO. 8 OF 8 SHEETS STA. TO STA.

F.A.P. RTE.	SECTION	COUNTY	TOTAL SHEETS	SHEET NO.
331	(12-1)-B-1	JACKSON	200	41
CONTRACT NO. 78056				
ILLINOIS FED. AID PROJECT				